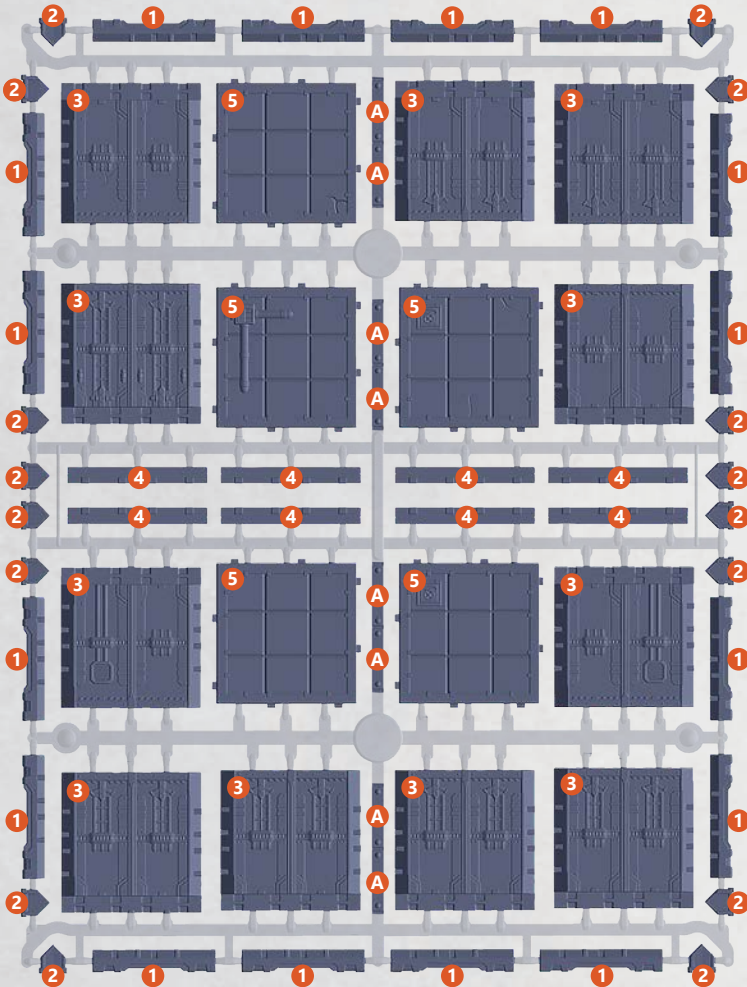


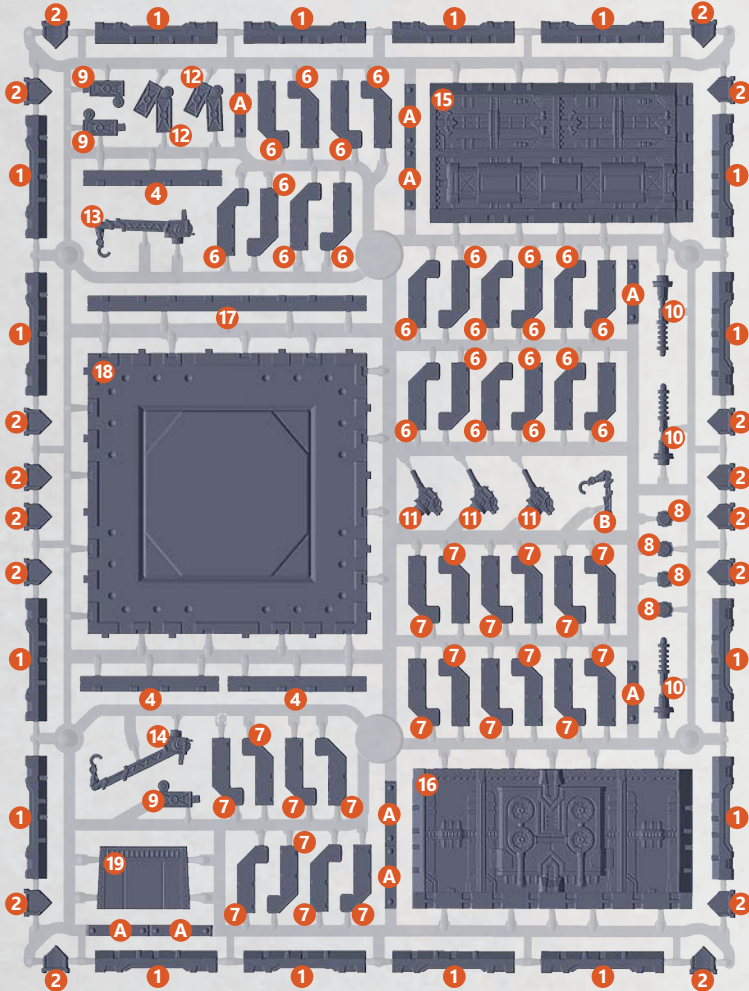
DYSTOPIAN INDUSTRIAL SPRUE NO. 1

- 1 BUTTRESS (X16)
- 2 CAPS (X16)
- 3 WALL SECTION (MULTIPLE DESIGNS – MD) (X11)
- 4 WALL BASE (X8)
- 5 ROOF TILES (X5)
- A OPTIONAL ROOF STRUTS



DYSTOPIAN INDUSTRIAL SPRUE NO. 2

- | | | |
|------------------------------|-------------------------------------|------------------------------------|
| 1 BUTTRESS (X16) | 10 ANTENNA (X3) | 17 DBL WIDTH WALL BASE (X1) |
| 2 CAPS (X16) | 11 TURRETS (X3) | 18 LARGE ROOF (X1) |
| 4 WALL BASE (MD) (X3) | 12 CRATES A (X2) | 19 RAMP (X1) |
| 6 LEFT PARAPET (X20) | 13 CRANE A (X1) | A OPTIONAL ROOF STRUTS |
| 7 RIGHT PARAPET (X20) | 14 CRANE B (X1) | B OPTIONAL WALL CRANE |
| 8 CHIMNEY STACKS (X4) | 15 DBL HEIGHT WALL (MD) (X1) | |
| 9 CRATES B (X3) | 16 DBL WIDTH WALL (MD) (X1) | |



STRAIGHT WALL ASSEMBLY

CAN BE FOUND ON THE **DYSTOPIAN INDUSTRIAL** SPRUE

INTRODUCTION

THE FOLLOWING ASSEMBLY STAGES COVER CERTAIN AREAS OF CONSTRUCTION FOR ANY BUILDING.

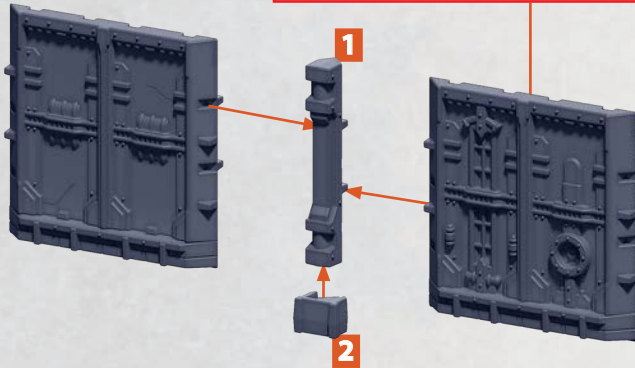
COMBINATIONS OF THESE STAGES WILL ALLOW YOU TO CONSTRUCT A WIDE VARIETY OF BUILDINGS TO ANY WIDTH, LENGTH, SHAPE OR HEIGHT YOU REQUIRE.

THE BUILDING IMAGES ON THE BOX ARE A SUGGESTION ONLY AND CAN ALL BE CONSTRUCTED USING THIS GUIDE AND PARTS IN THIS SET.

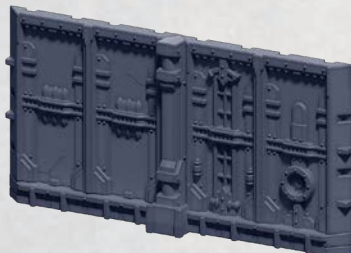
X2

NOTE: WALL DESIGN IS ONE EXAMPLE OF MULTIPLE DESIGNS INCLUDED – ANY WALL DESIGN CAN BE USED

NOTE: WALL BASE DESIGN IS ONE EXAMPLE OF MULTIPLE DESIGNS INCLUDED – ANY WALL BASE DESIGN CAN BE USED



PROCESS CAN BE REPEATED TO EXTEND THE WALLS TO DESIRED LENGTH

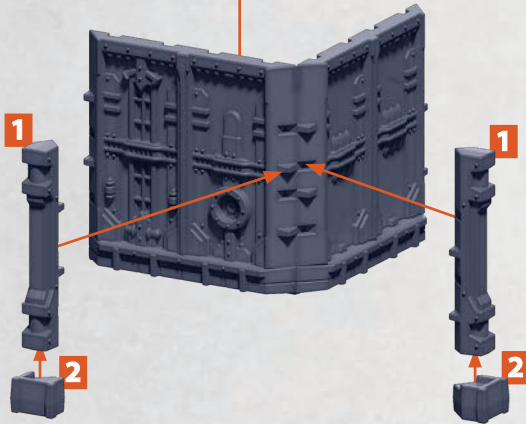
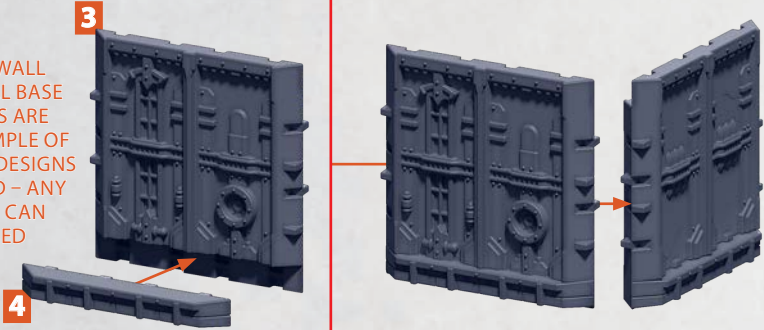


OUTER CORNER WALL ASSEMBLY

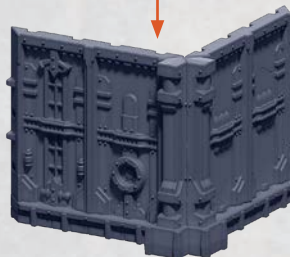
CAN BE FOUND ON THE **DYSTOPIAN INDUSTRIAL** SPRUE

X2

NOTE: WALL
AND WALL BASE
DESIGNS ARE
ONE EXAMPLE OF
MULTIPLE DESIGNS
INCLUDED – ANY
DESIGN CAN
BE USED



FOLLOW PROCESS
ON **PAGE 1** TO
EXTEND THE WALLS
TO DESIRED LENGTH



REPEAT
PROCESS TO
ADD FURTHER
CORNERS

INNER CORNER WALL ASSEMBLY

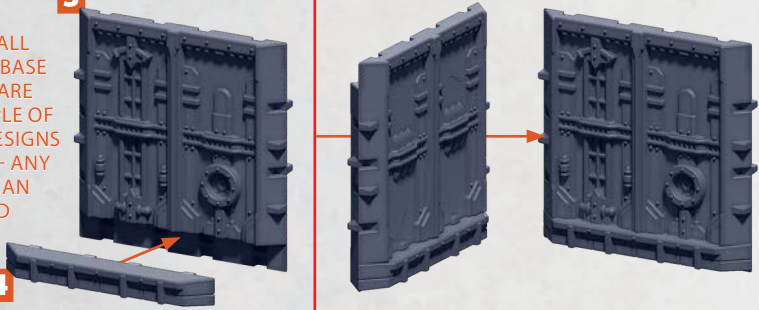
CAN BE FOUND ON THE **DYSTOPIAN INDUSTRIAL** SPRUE

X2

NOTE: WALL
AND WALL BASE
DESIGNS ARE
ONE EXAMPLE OF
MULTIPLE DESIGNS
INCLUDED - ANY
DESIGN CAN
BE USED

3

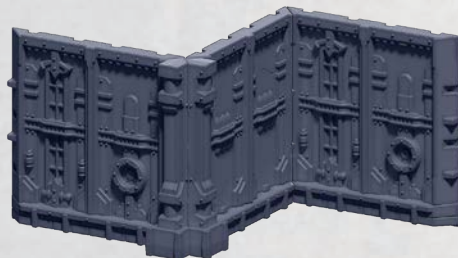
4



FOLLOW PROCESS
ON **PAGE 1** TO
EXTEND THE WALLS
TO DESIRED LENGTH



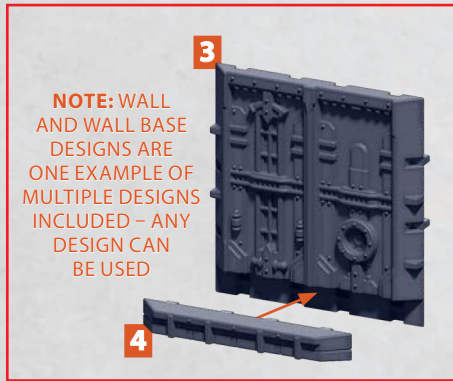
REPEAT
PROCESS TO
ADD FURTHER
CORNERS



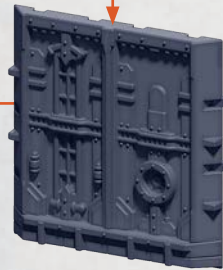
CAN BE ADDED
TO **OUTER
CORNER WALL**
(SEE **PAGE 2**)
TO CREATE
ALTERNATIVE
SHAPES

MULTIPLE HEIGHT WALL ASSEMBLY

CAN BE FOUND ON THE **DYSTOPIAN INDUSTRIAL** SPRUE



NOTE: ADD ADDITIONAL WALLS IN THE SAME WAY TO INCREASE THE HEIGHT



NOTE: ONLY THE BASE WALL REQUIRES THE WALL BASE ATTACHMENT

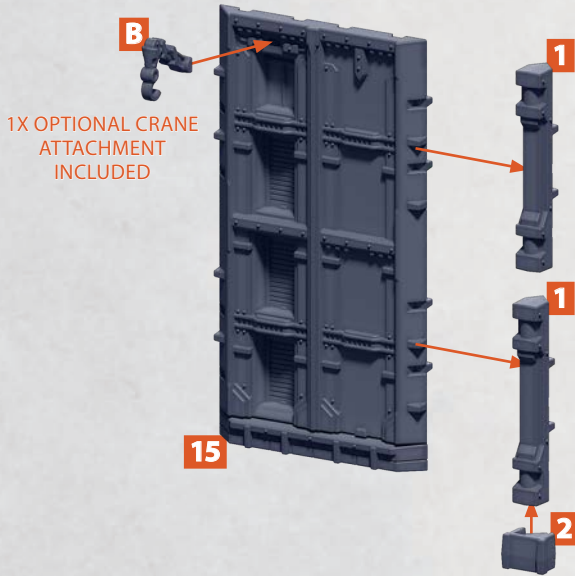
PROCESS CAN BE REPEATED TO EXTEND THE WALLS TO DESIRED LENGTH



COMBINE WITH ASSEMBLY METHODS ON **PAGES 2 AND 3** TO ADD CORNERS

DOUBLE HEIGHT WALL ASSEMBLY

CAN BE FOUND ON THE **DYSTOPIAN INDUSTRIAL** SPRUE



PROCESS CAN BE
REPEATED TO EXTEND
THE WALLS TO
DESIRED LENGTH

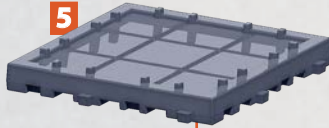
COMBINE WITH
ASSEMBLY METHODS
ON **PAGES 2 AND 3**
TO ADD CORNERS

SINGLE ROOF ASSEMBLY

CAN BE FOUND ON THE **DYSTOPIAN INDUSTRIAL** SPRUE

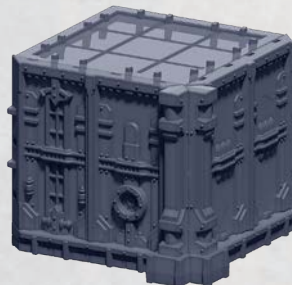
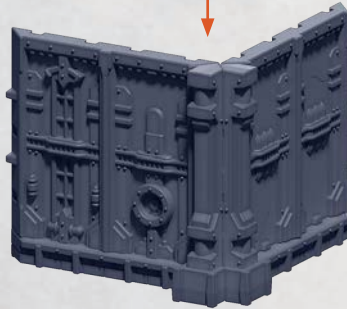
MULTIPLE
ROOF DESIGNS
AVAILABLE

5



CAN BE COMBINED WITH
ANY OF THE PREVIOUS
ASSEMBLYS SHOWN

SEE **PAGE 2** FOR
CORNER WALL
ASSEMBLY



MULTIPLE ROOF ASSEMBLY

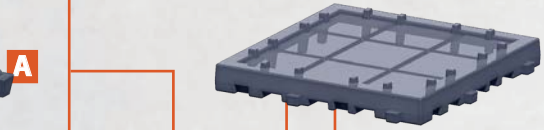
CAN BE FOUND ON THE **DYSTOPIAN INDUSTRIAL** SPRUE

5

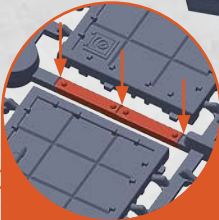
MULTIPLE ROOF
DESIGNS AVAILABLE



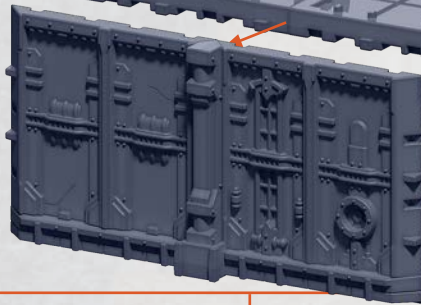
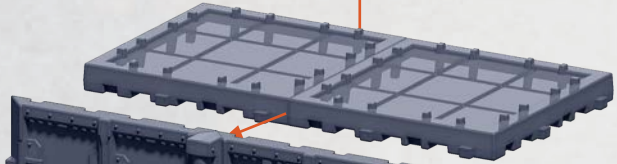
A



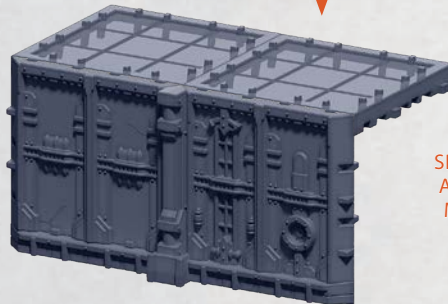
REPEAT THIS
PROCESS TO
EXTEND ROOF'S
WIDTH OR
DEPTH



OPTIONAL SUPPORT
STRUTS (PARTS A)
ARE CUT FROM THE
SPRUE FRAME AT THE
LINES INDICATED AND
USED WHEREVER
NECESSARY ON
THE ROOF



ADDITIONAL WALLS
AND ROOFS CAN BE
ADDED TO EXTEND
THE LOOK



SIDE WALLS CAN BE
ADDED USING THE
METHOD SHOWN
ON **PAGE 2**

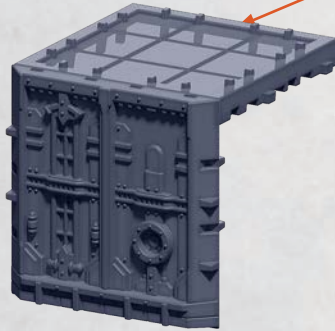
UPPER LEVEL WALLS ASSEMBLY

CAN BE FOUND ON THE **DYSTOPIAN INDUSTRIAL** SPRUE



NOTE: WALL
DESIGN IS
ONE EXAMPLE
OF MULTIPLE
DESIGNS – ANY
WALL DESIGN
CAN BE USED

**SEE PAGES 2 & 5
FOR ASSEMBLY**



NOTE: THIS PROCESS CAN
BE REPEATED TO EXTEND
THE WALL, ENSURING THAT
THE PILLAR (**SEE PAGE 1,
PART 4**) IS USED BETWEEN
THE WALLS

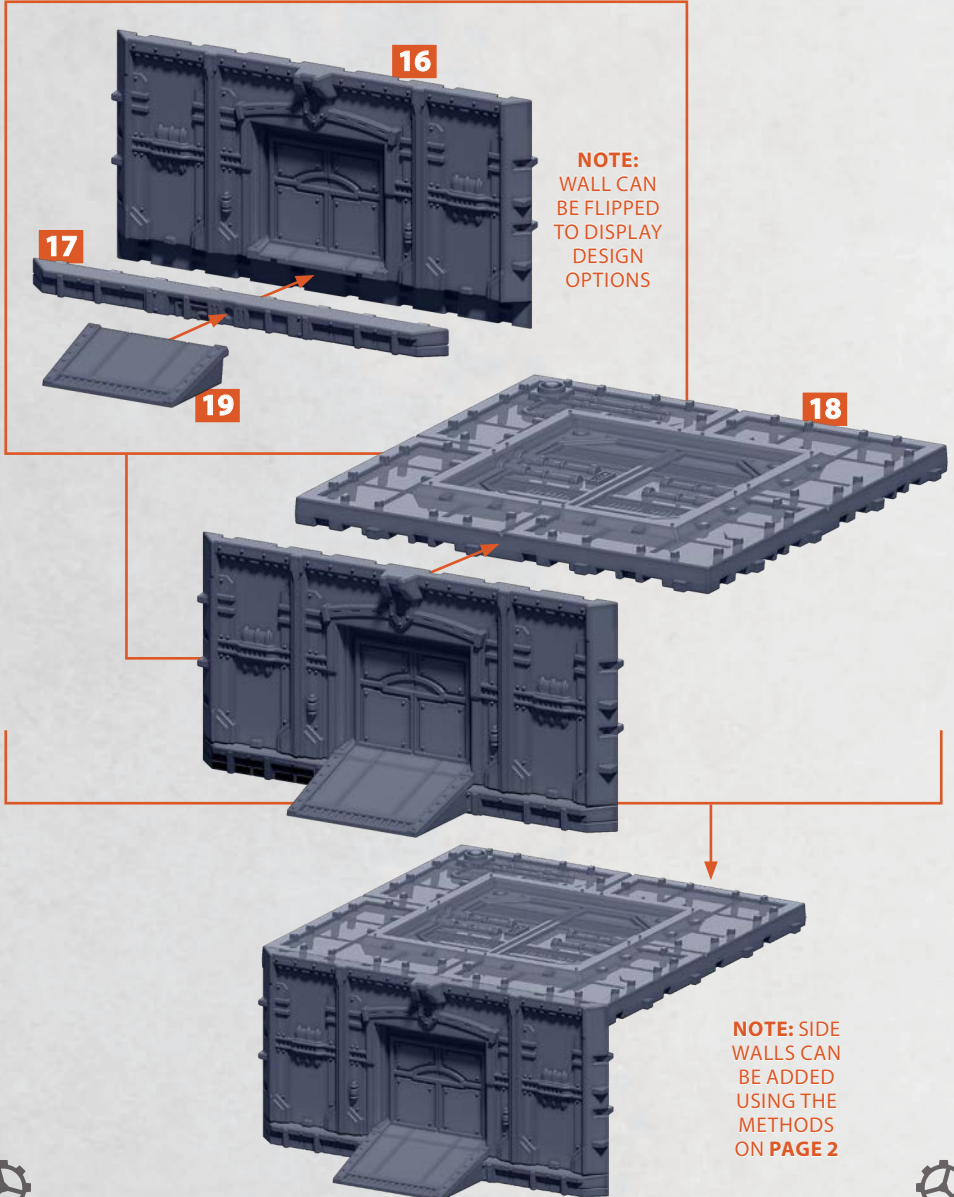


NOTE: SIDE
WALLS CAN
BE ADDED
USING THE
METHODS
ON **PAGE 2**



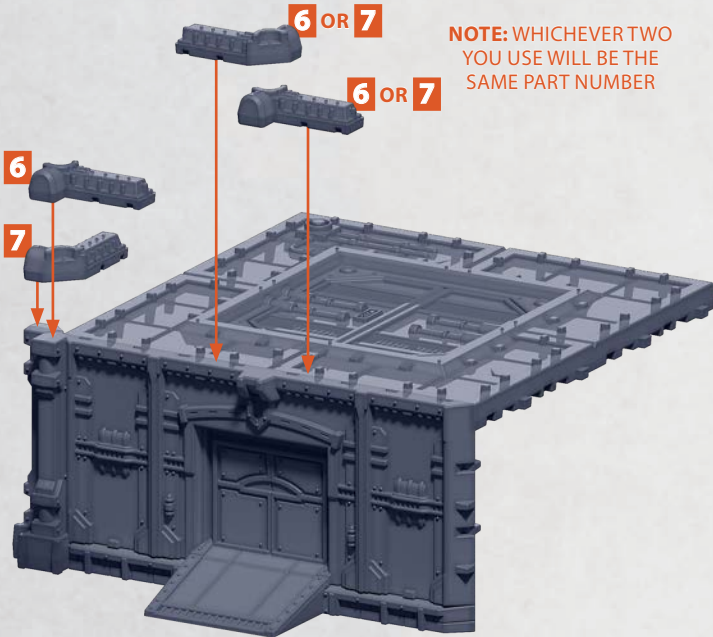
DOUBLE WIDTH WALL ASSEMBLY WITH RAMP

CAN BE FOUND ON THE **DYSTOPIAN INDUSTRIAL** SPRUE

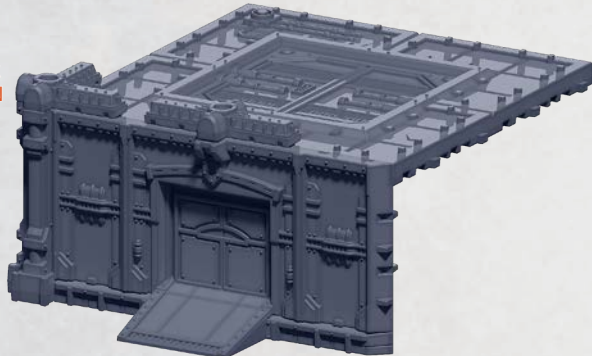


PARAPET ASSEMBLY

CAN BE FOUND ON THE **DYSTOPIAN INDUSTRIAL** SPRUE



PARAPETS ARE
OPTIONAL AND CAN
BE ADDED TO ANY
BUILDING EDGES OR
CORNERS AS SHOWN



EXTRAS ASSEMBLY

CAN BE FOUND ON THE **DYSTOPIAN INDUSTRIAL** SPRUE

8



CHIMNEY STACKS

10



ANTENNA

11



TURRETS

13 OR 14



CRANES

PARAPETS ARE
OPTIONAL AND CAN
BE ADDED TO ANY
BUILDING EDGES OR
CORNERS AS SHOWN
(SEE PAGE 12)

