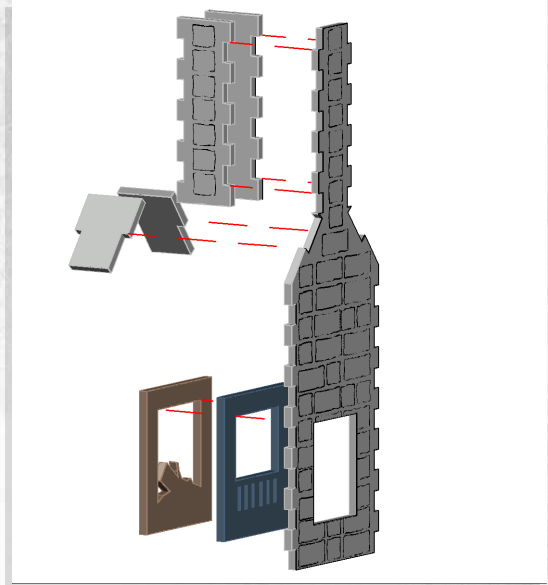
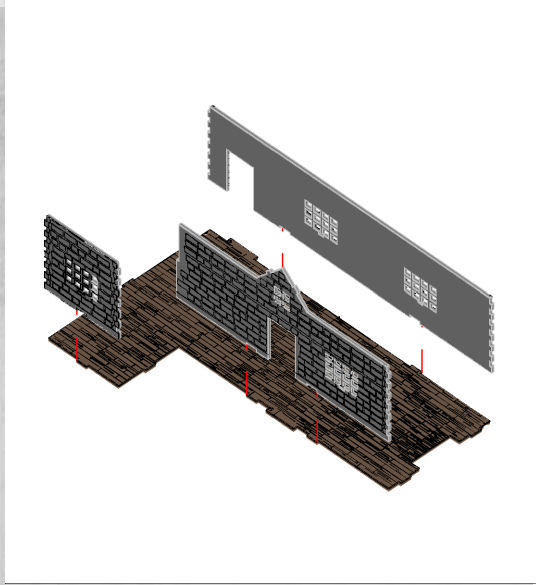




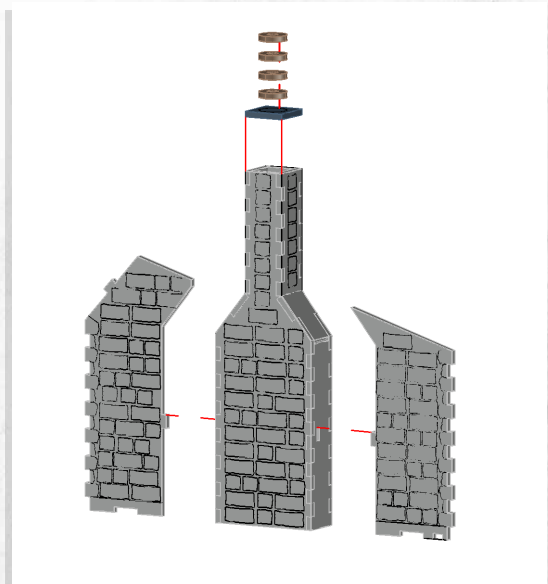
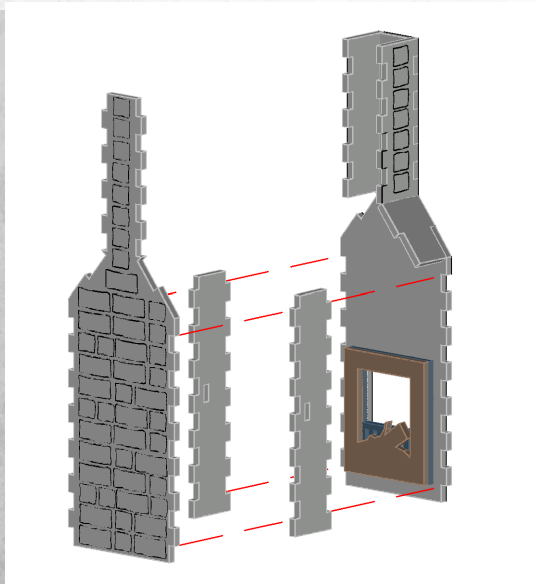
WARCRADLE<sup>TM</sup>  
SCENICS

## Normandy Farm - Cottage - Assembly Guide

Warning: Pushing parts out by hand may cause damage. Parts may need careful removal from the MDF boards with a scalpel, and light sanding of any rough edges. We recommend testing assembling sections before permanently gluing together.



Repeat on both sides of building

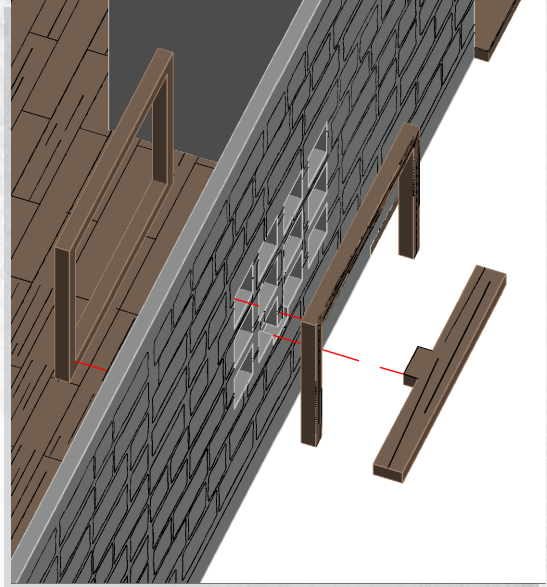
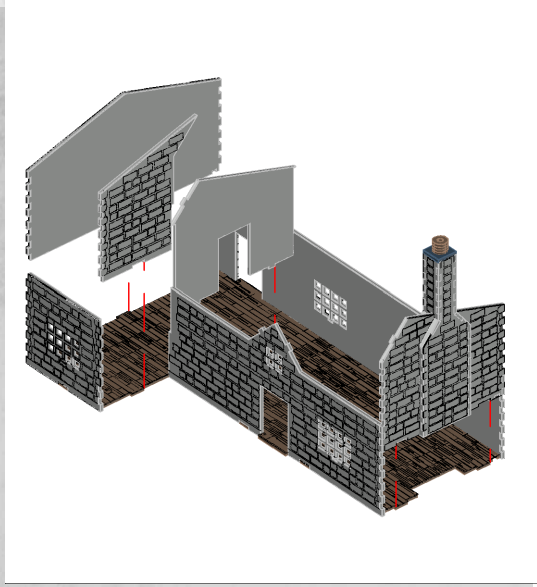




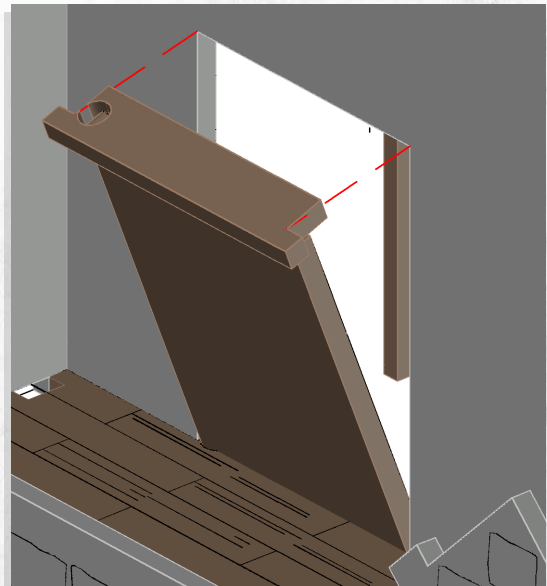
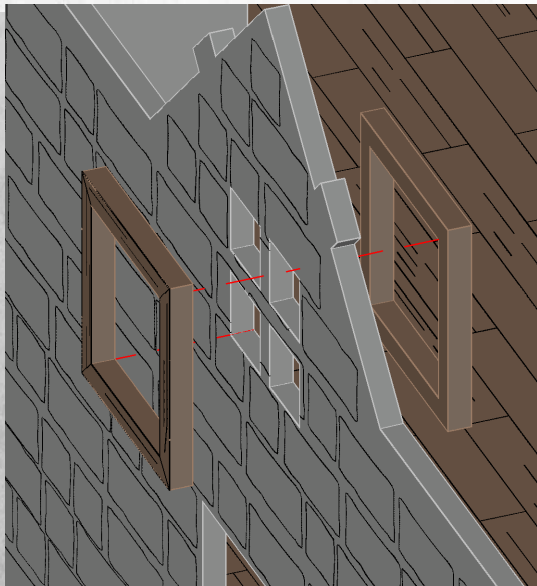
WARCRADLE<sup>TM</sup>  
SCENICS

## Normandy Farm - Cottage - Assembly Guide

Warning: Pushing parts out by hand may cause damage. Parts may need careful removal from the MDF boards with a scalpel, and light sanding of any rough edges. We recommend testing assembling sections before permanently gluing together.



Repeat for all windows



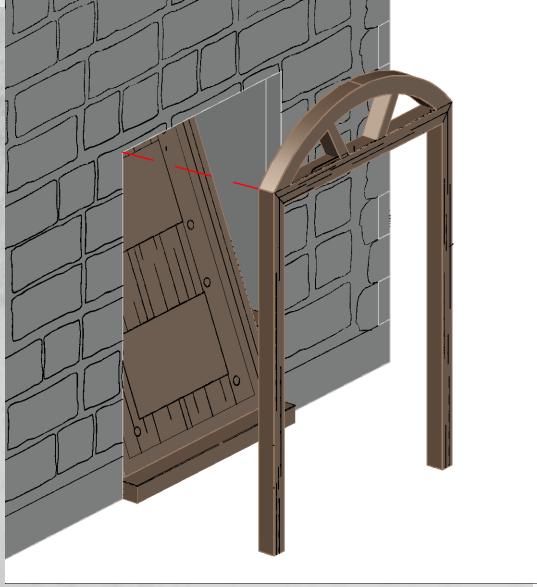
Repeat for all doors



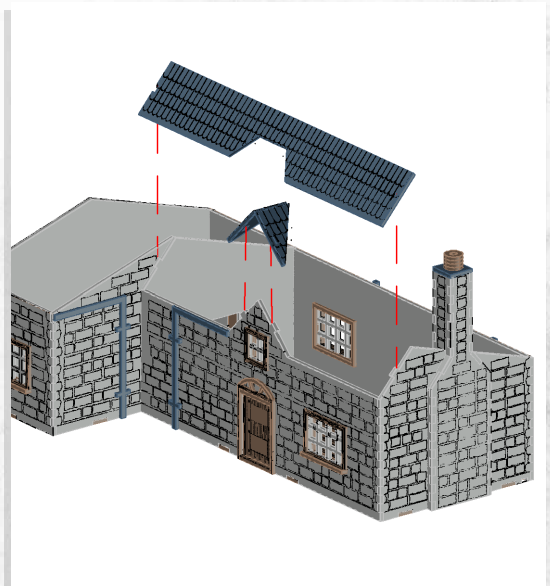
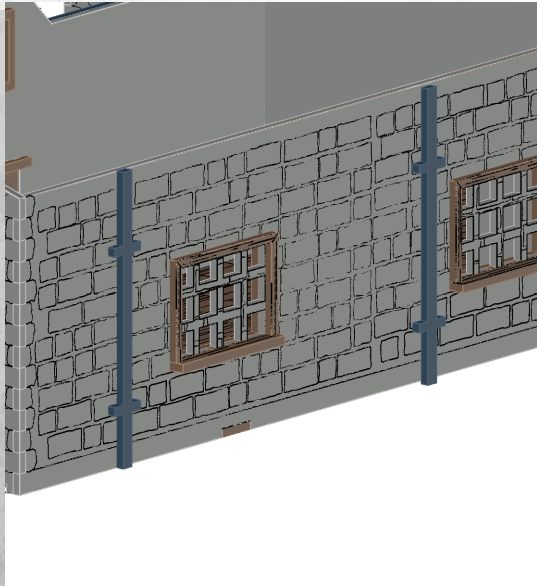
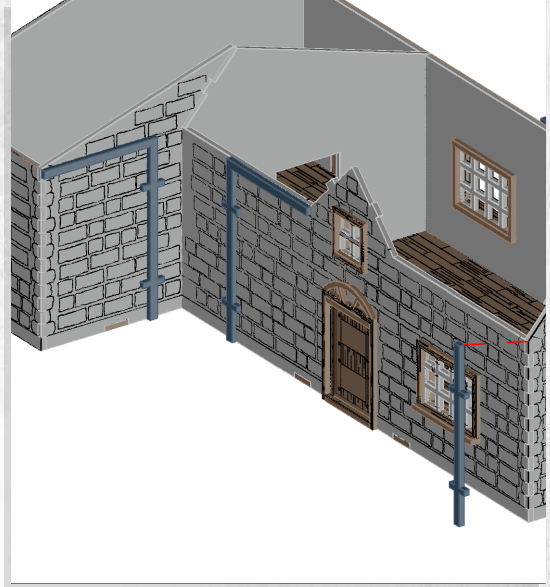
WARCRADLE<sup>TM</sup>  
SCENICS

## Normandy Farm - Cottage - Assembly Guide

Warning: Pushing parts out by hand may cause damage. Parts may need careful removal from the MDF boards with a scalpel, and light sanding of any rough edges. We recommend testing assembling sections before permanently gluing together.



Repeat for all doors

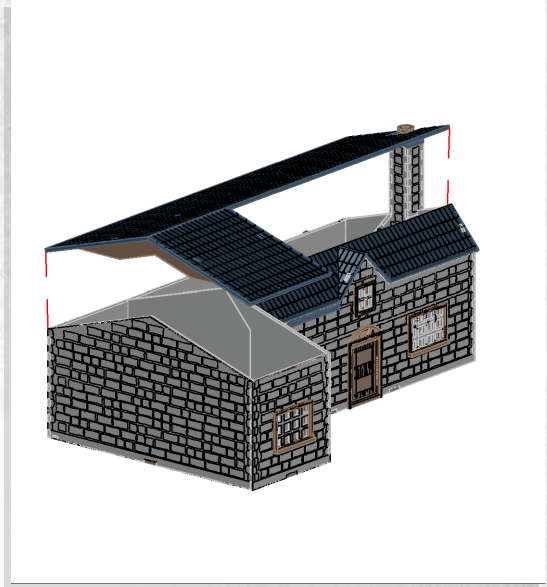
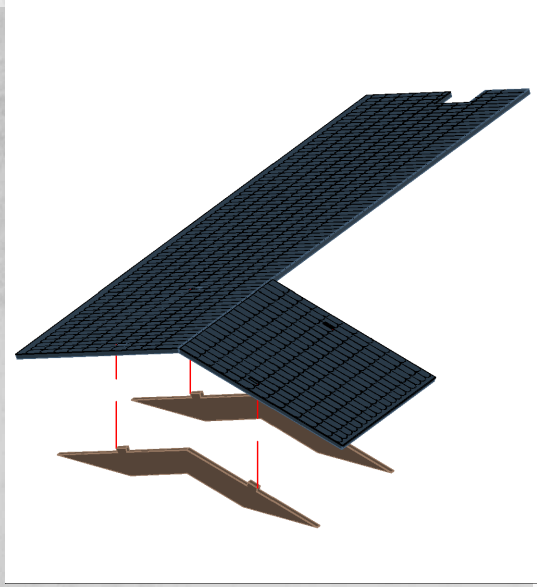




WARCRADLE<sup>TM</sup>  
SCENICS

## Normandy Farm - Cottage - Assembly Guide

Warning: Pushing parts out by hand may cause damage. Parts may need careful removal from the MDF boards with a scalpel, and light sanding of any rough edges. We recommend testing assembling sections before permanently gluing together.



DO NOT glue roof to building

