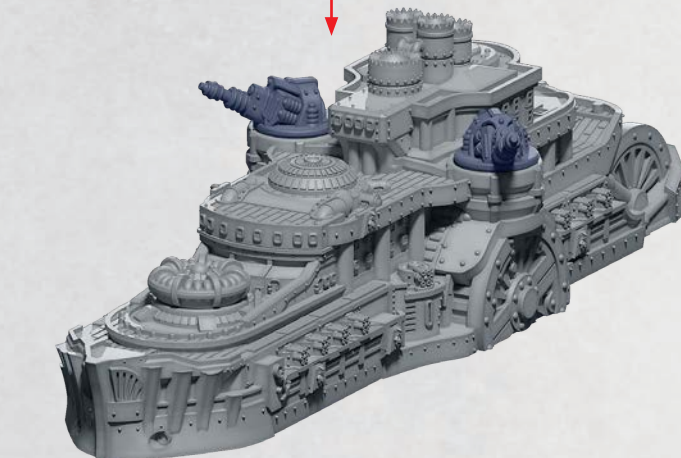
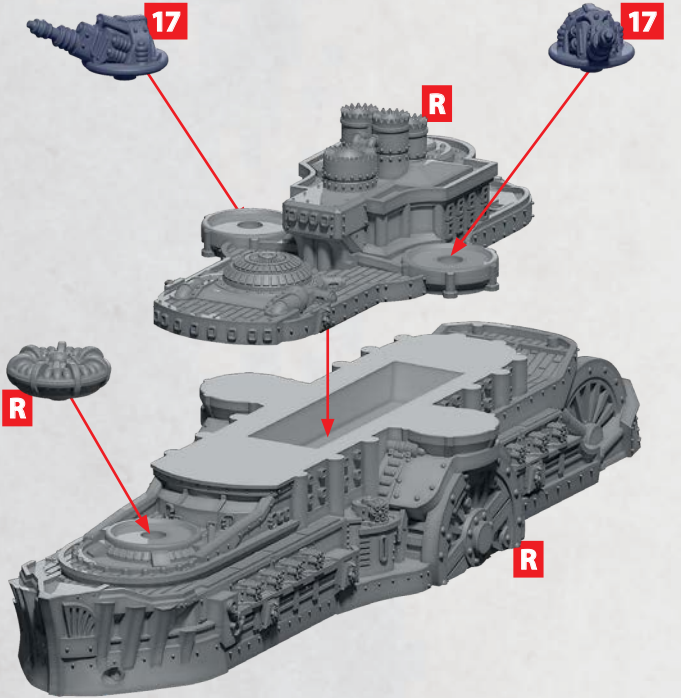


# MEXICO

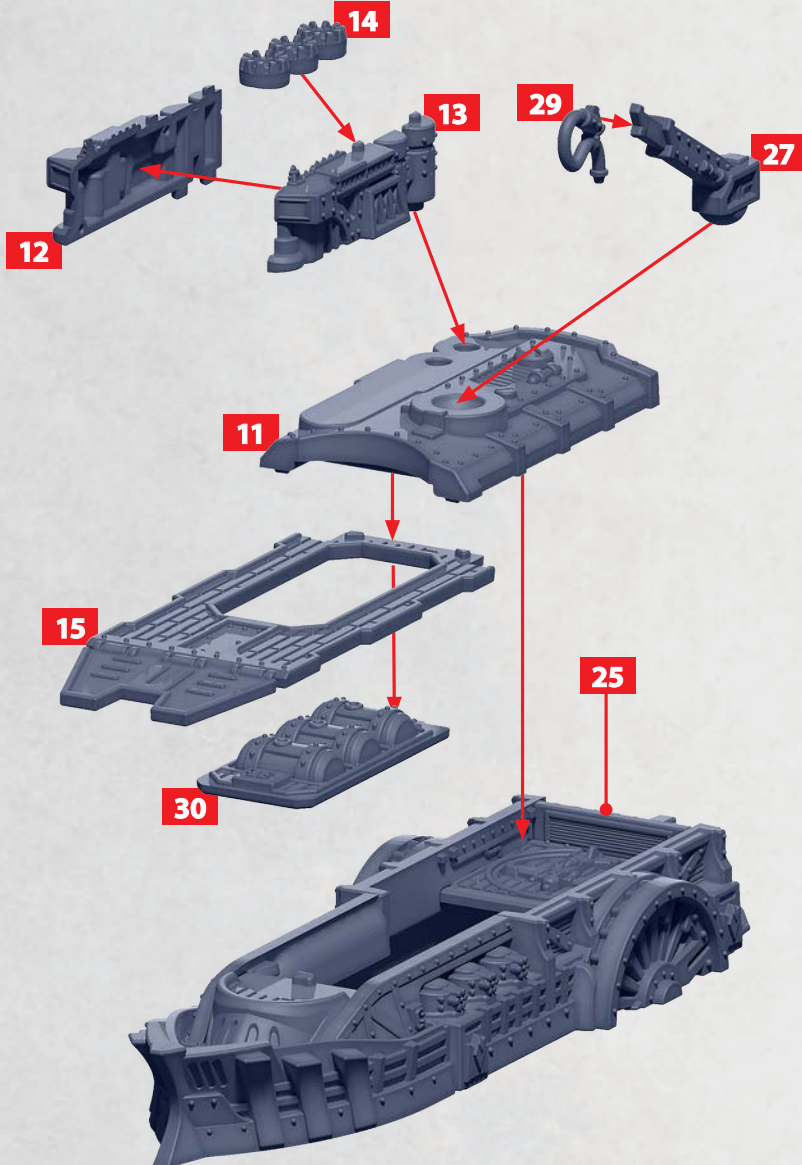
PARTS CAN BE FOUND ON THE PLASTIC SPRUE AND AS RESIN COMPONENTS



**R** = RESIN

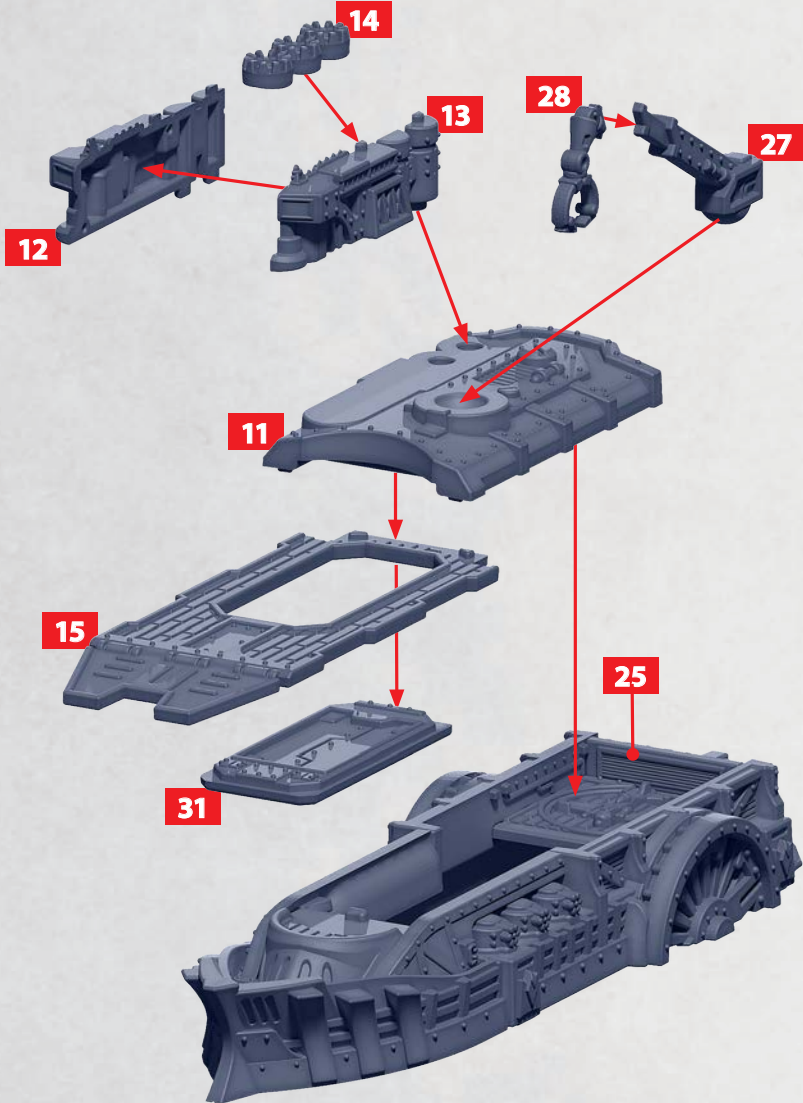
# CALIFORNIA CLASS CRUISER

PARTS CAN BE FOUND ON THE UNION SUPPORT SQUADRONS SPRUES



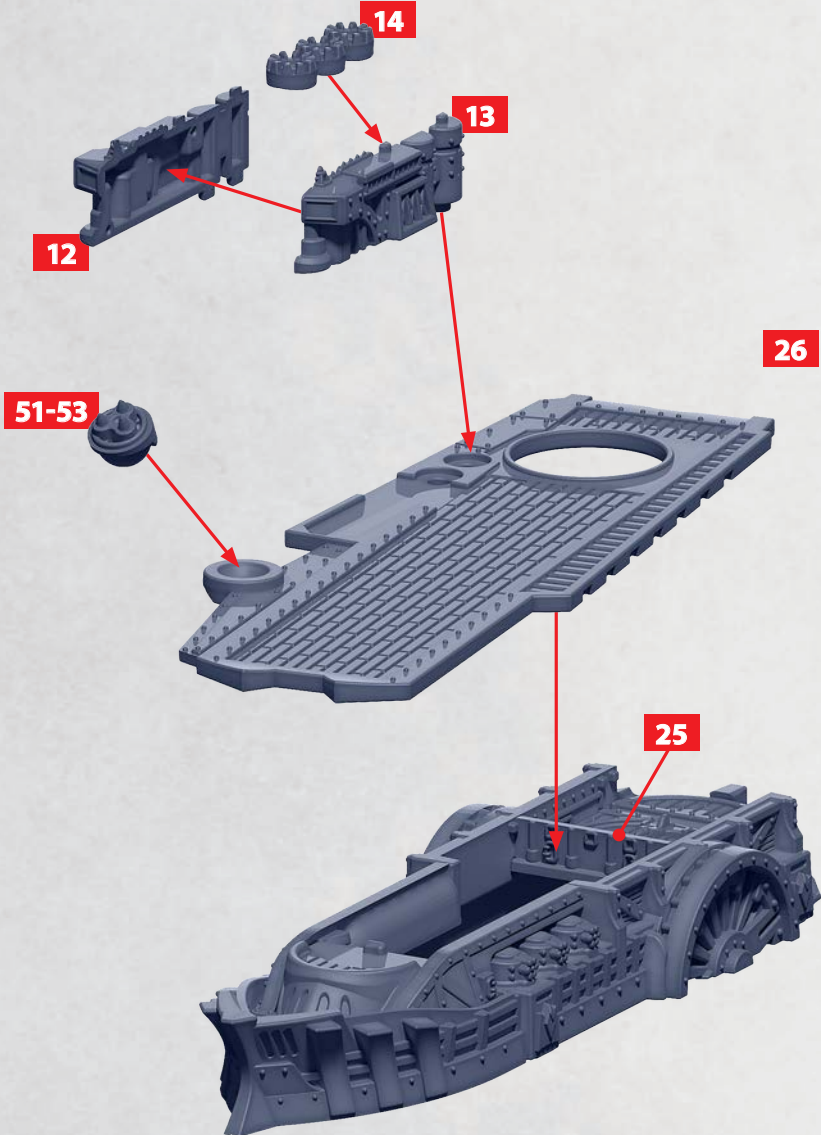
# MONTGOMERY CLASS CRUISER

PARTS CAN BE FOUND ON THE UNION SUPPORT SQUADRONS SPRUES



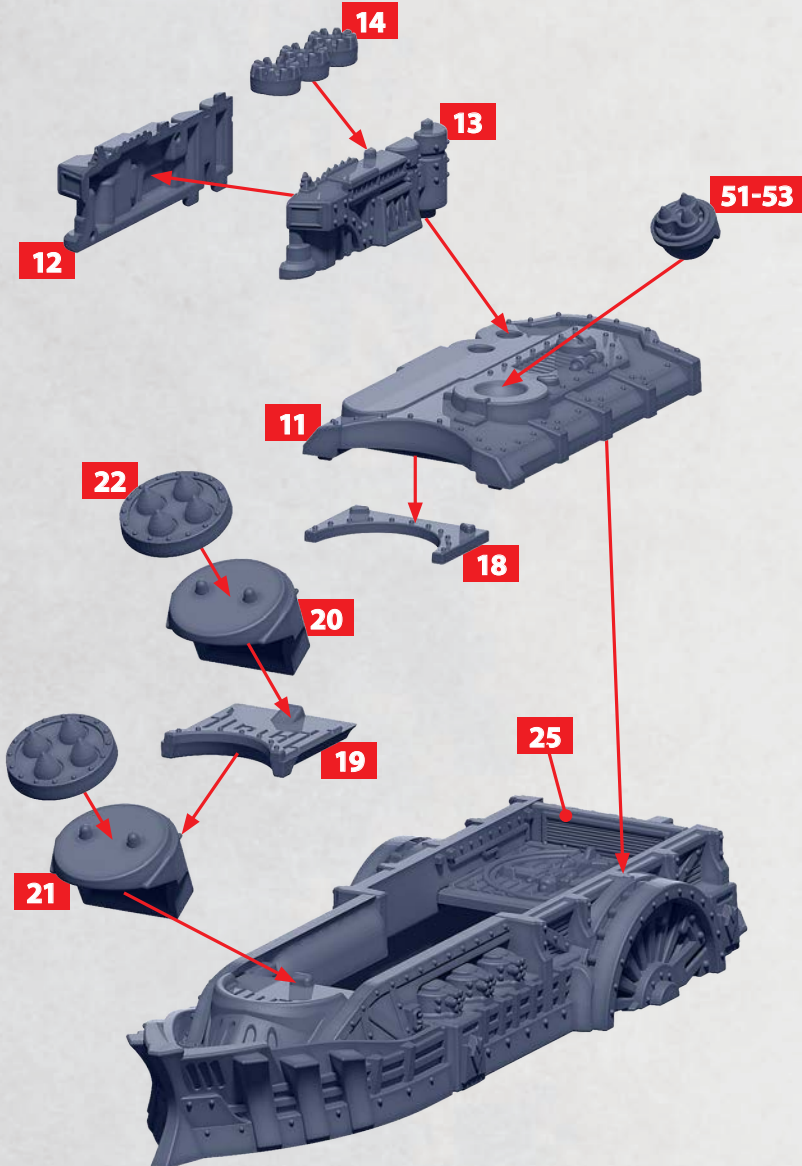
# ROANOKE CLASS CRUISER

PARTS CAN BE FOUND ON THE UNION SUPPORT SQUADRONS SPRUES



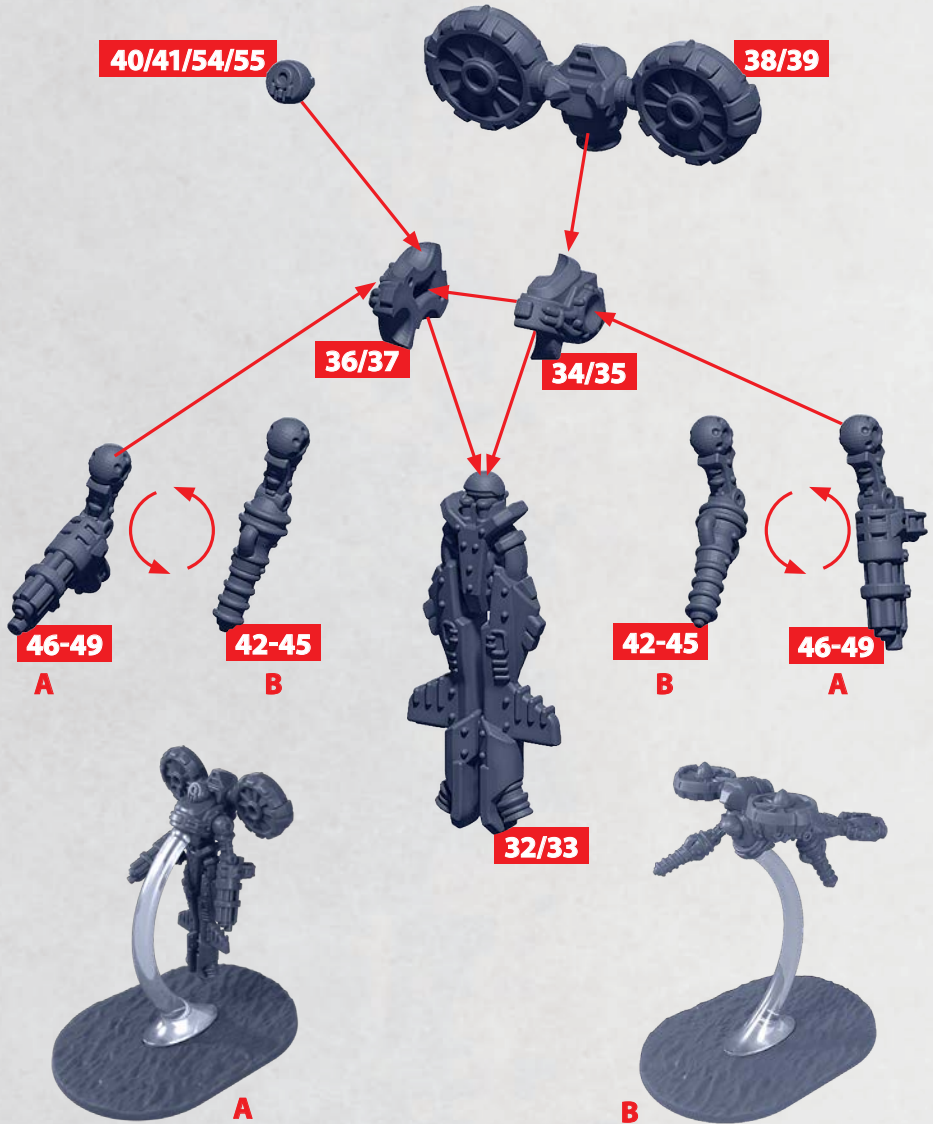
# WASHINGTON CLASS CRUISER

PARTS CAN BE FOUND ON THE UNION SUPPORT SQUADRONS SPRUES



# RC-52 PATRIOT AUTOMATA

PARTS CAN BE FOUND ON THE **UNION SUPPORT SQUADRONS** SPRUES



**AUTOMATA MUST BE ASSEMBLED WITH THE SAME WEAPON OPTION FOR BOTH ARMS,  
I.E. DUAL GATLING CANNONS (A) OR DUAL NAVAL ELECTROCANNONS (B).  
AUTOMATA CAN ALSO BE POSITIONED ON THE FLIGHT STAND AS DESIRED (SEE ABOVE).**