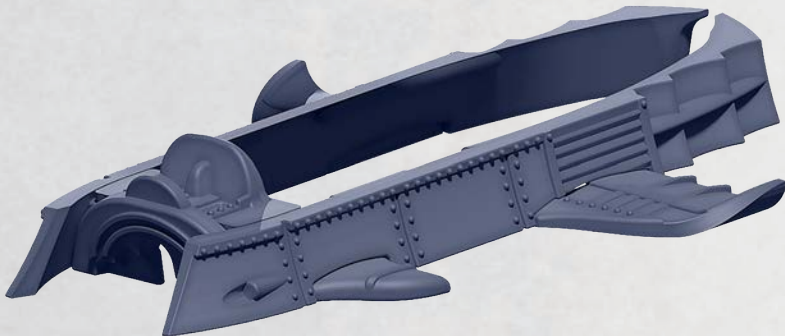
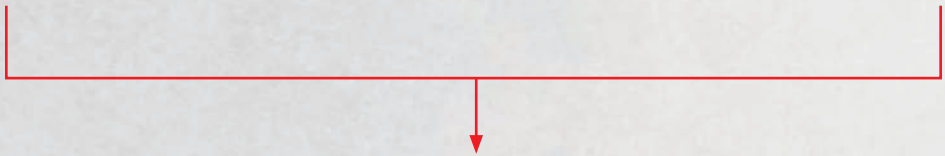
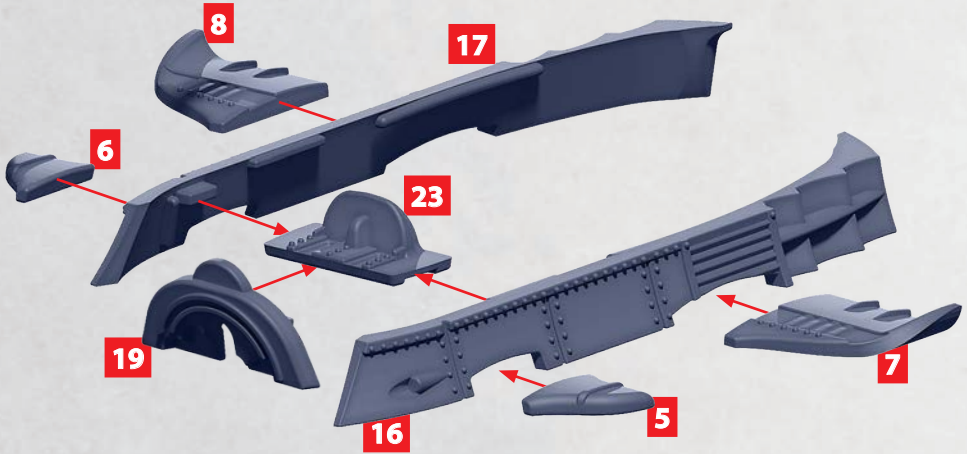


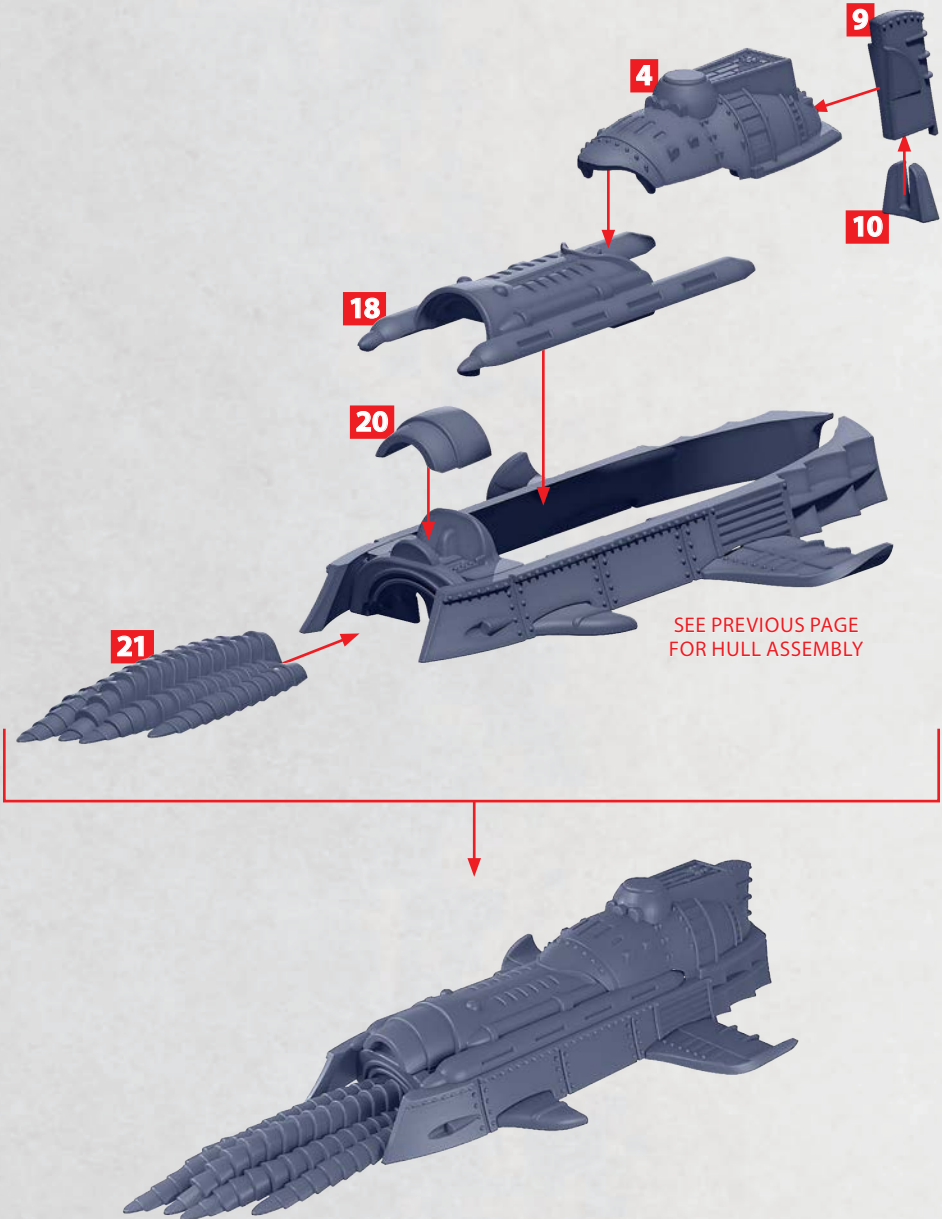
# HULL ASSEMBLY FOR KOROMODAKO OR UMIBOZU

PARTS CAN BE FOUND ON THE EMPIRE JAPANESE SUPPORT SPRUES



# KOROMODAKO

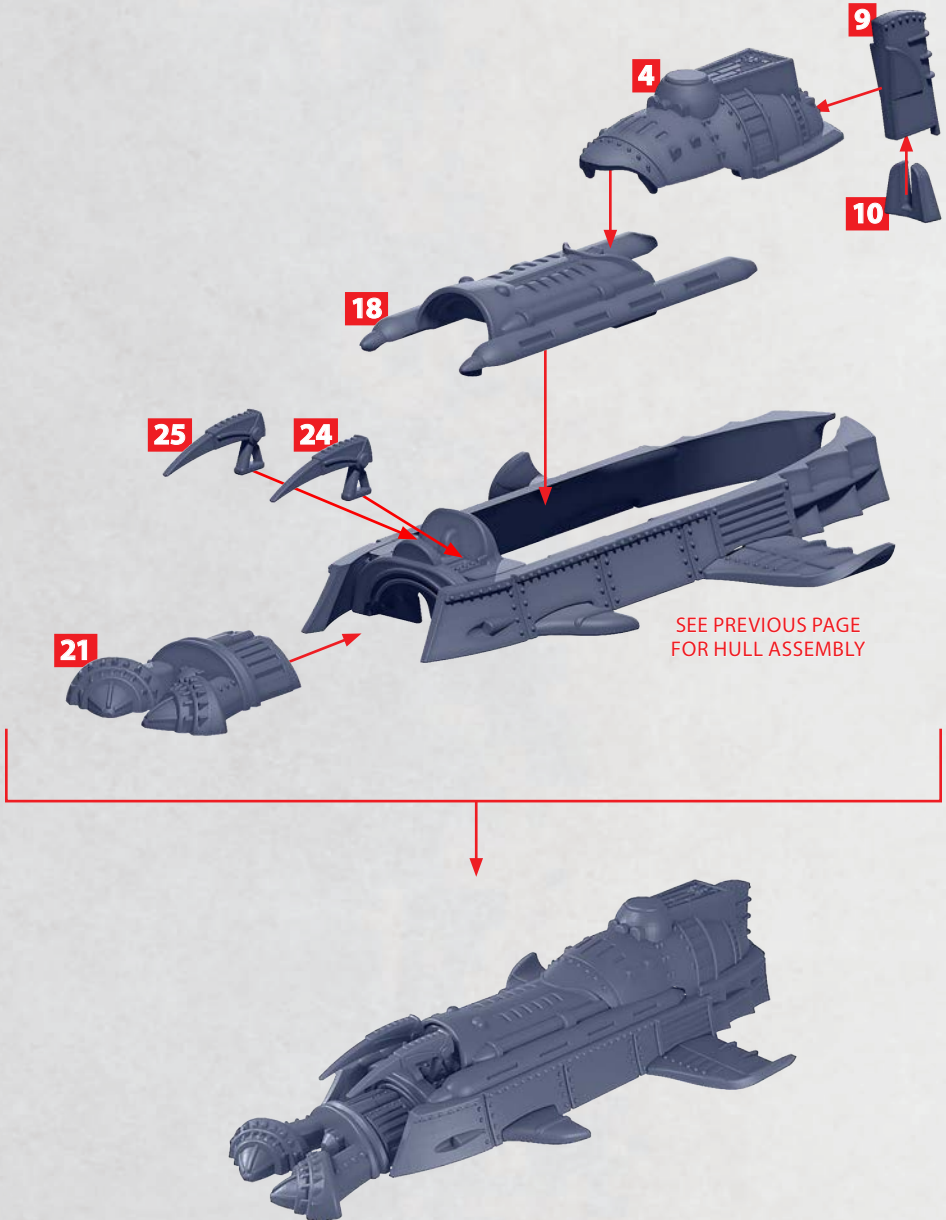
PARTS CAN BE FOUND ON THE EMPIRE JAPANESE SUPPORT SPRUES



SEE PREVIOUS PAGE  
FOR HULL ASSEMBLY

# UMIBOZU

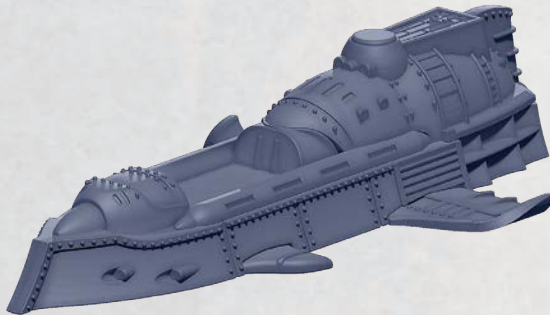
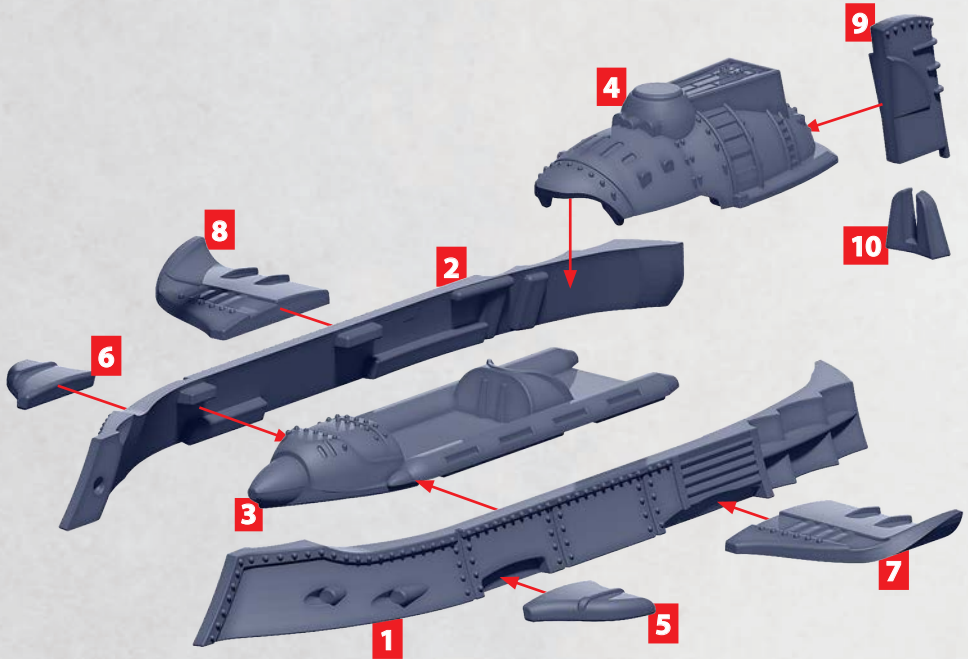
PARTS CAN BE FOUND ON THE EMPIRE JAPANESE SUPPORT SPRUES



SEE PREVIOUS PAGE  
FOR HULL ASSEMBLY

# HULL ASSEMBLY FOR RYUJIN, KAGUTSUCHI, MIZUCHI OR KENSAI SUBMERSIBLE

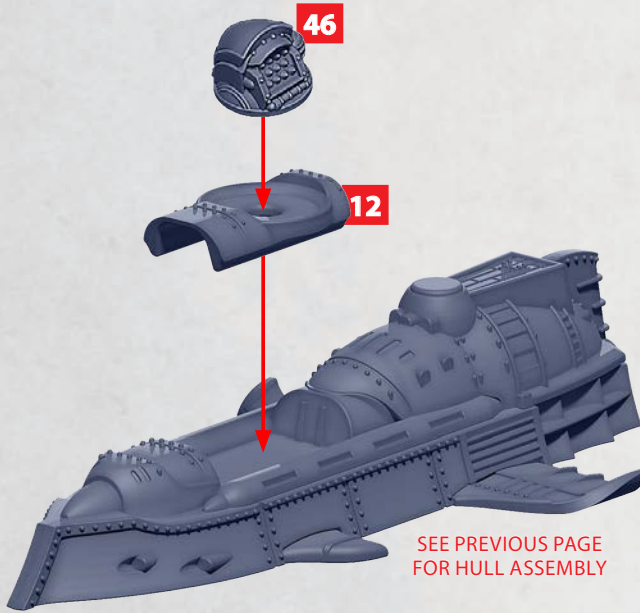
PARTS CAN BE FOUND ON THE EMPIRE JAPANESE SUPPORT SPRUES





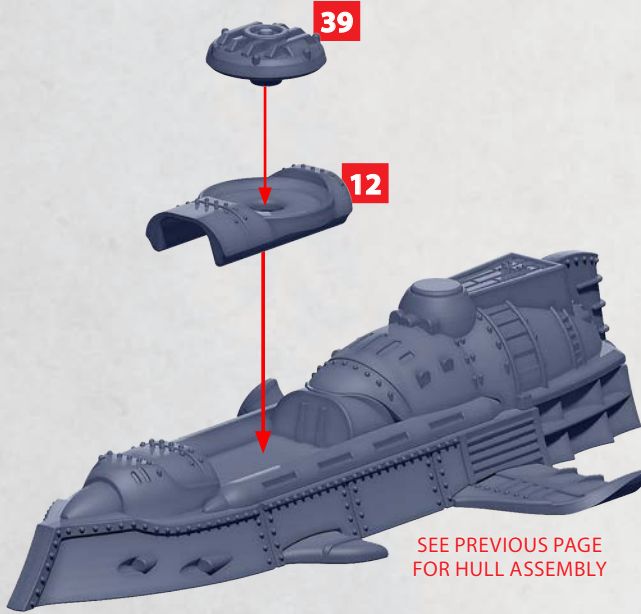
# RYUJIN SUBMERSIBLE

PARTS CAN BE FOUND ON THE **EMPIRE JAPANESE SUPPORT SPRUES**



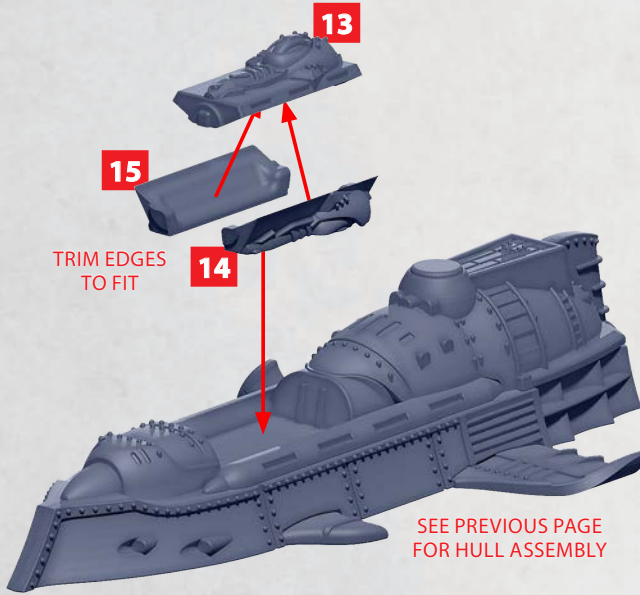
# KAGUTUCHI SUBMERSIBLE

PARTS CAN BE FOUND ON THE EMPIRE JAPANESE SUPPORT SPRUES



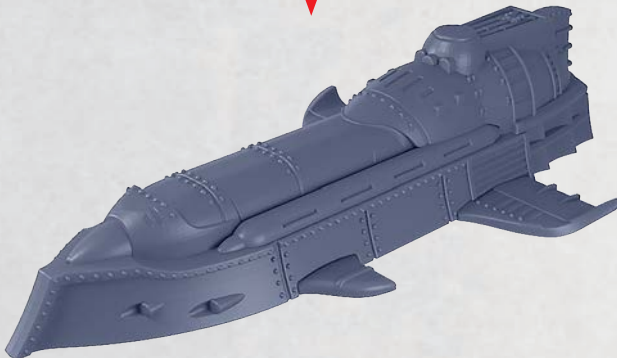
# MIZUCHI SUBMERSIBLE

PARTS CAN BE FOUND ON THE **EMPIRE JAPANESE SUPPORT SPRUES**



# KENSAI SUBMERSIBLE

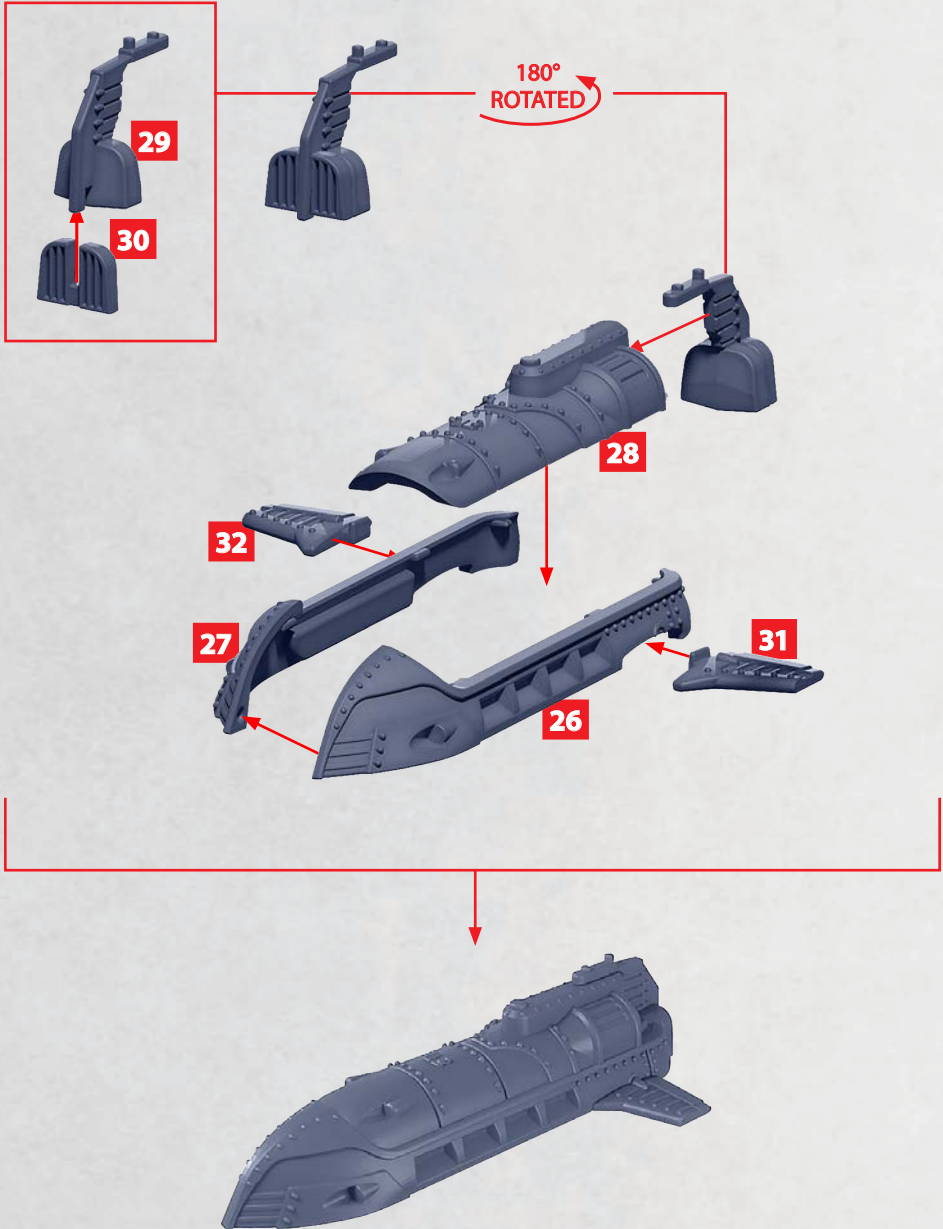
PARTS CAN BE FOUND ON THE **EMPIRE JAPANESE SUPPORT SPRUES**





# CHUBU CLASS SUBMARINE

PARTS CAN BE FOUND ON THE EMPIRE JAPANESE SUPPORT SPRUES



# SAKATA CLASS DESTROYER

PARTS CAN BE FOUND ON THE EMPIRE JAPANESE SUPPORT SPRUES

