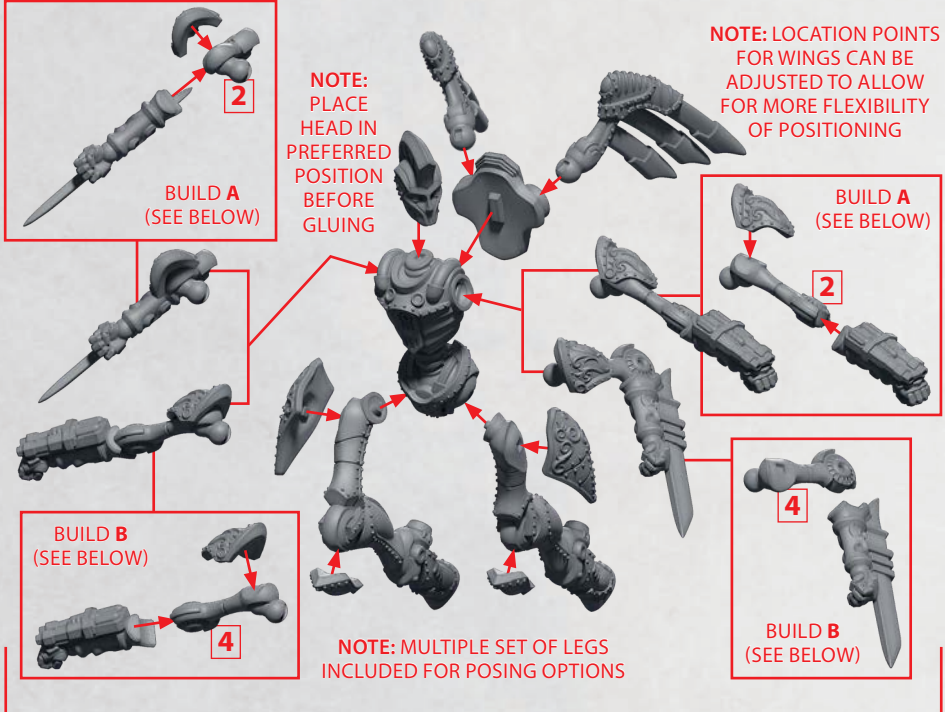


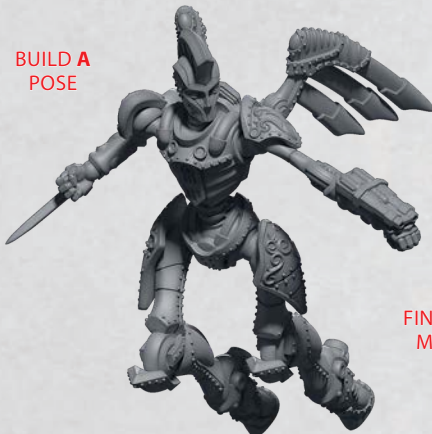
CHASKA VITRUVIAN COLOSSUS

ALL PARTS CAN BE FOUND AS RESIN

NOTE: BICEP PARTS (NO. 2 & 4 BELOW) CORRESPOND TO NUMBERS ON THE RESIN SPRUE – BE SURE TO USE THE CORRECT NUMBERED PART TO ACHIEVE THE DESIRED FINISHED POSE IN ALL CASES



BUILD A POSE



BUILD B POSE



FINAL POSES MAY VARY

QUALOR VITRUVIAN COLOSSUS

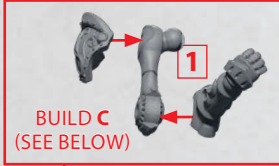
PARTS CAN BE FOUND AS RESIN PARTS

NOTE: BICEP PARTS (NO. 1 & 3 BELOW) CORRESPOND TO NUMBERS ON THE RESIN SPRUE – BE SURE TO USE THE CORRECT NUMBERED PART TO ACHIEVE THE DESIRED FINISHED POSE IN ALL CASES

NOTE: LOCATION POINTS FOR WINGS CAN BE ADJUSTED TO ALLOW FOR MORE FLEXIBILITY OF POSITIONING

BUILD C (SEE BELOW)

1



BUILD C (SEE BELOW)

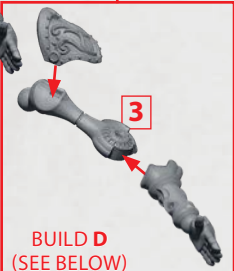


BUILD D (SEE BELOW)



3

BUILD D (SEE BELOW)



3

BUILD D (SEE BELOW)

NOTE: MULTIPLE SET OF LEGS INCLUDED FOR POSING OPTIONS

BUILD C POSE



BUILD D POSE



FINAL POSES MAY VARY