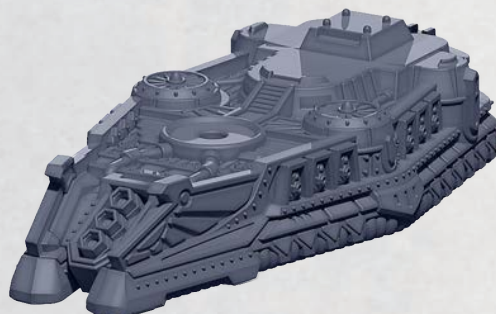
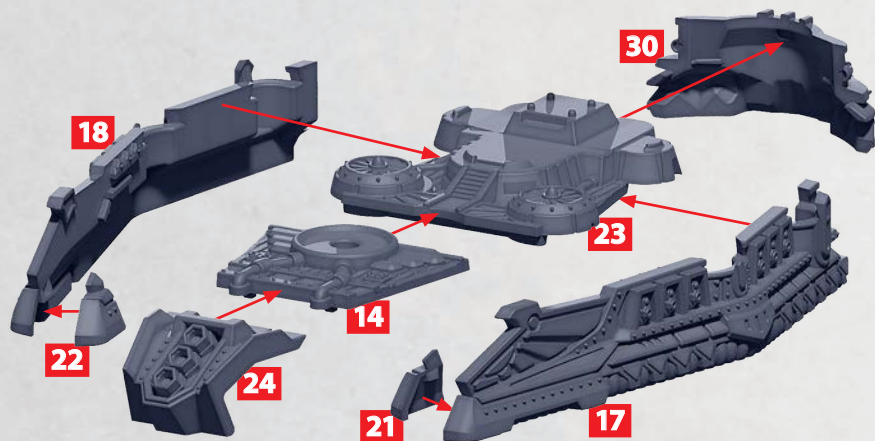


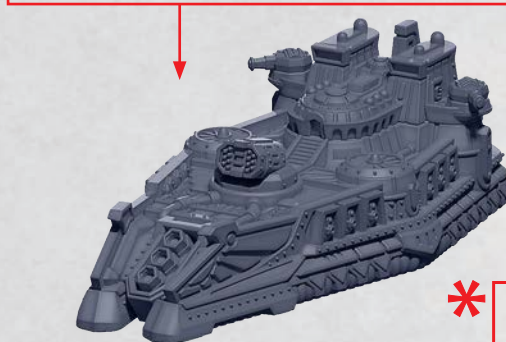
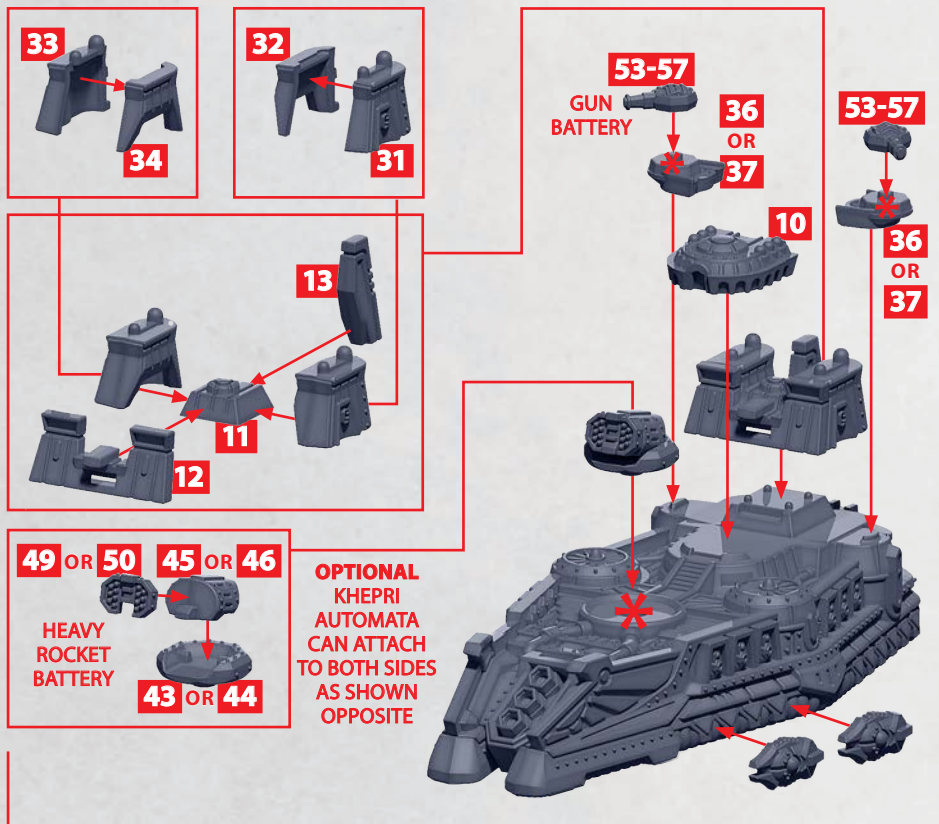
# MANDJET HEAVY SKIMMER

PARTS CAN BE FOUND ON THE **EGYPTIAN FRONTLINE SQUADRON** SPRUES



# MANDJET HEAVY SKIMMER

PARTS CAN BE FOUND ON THE EGYPTIAN FRONTLINE SQUADRON SPRUES



ROCKET  
BATTERY

AETHERIC  
LANCE



68-73

60-67

HEAVY GUN  
BATTERY

D-CANNON  
BATTERY

PARTICLE  
BEAMER



47-48\*\*

58-59

51-52

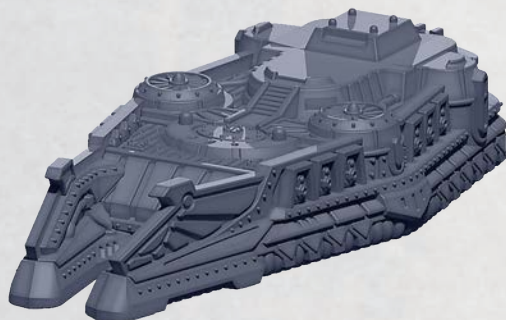
**R** = RESIN

\*ALL TURRETS ARE INTERCHANGEABLE

\*\*DOES NOT REQUIRE PARTS 45 OR 46

# SABAH BARRAGE SKIMMER

PARTS CAN BE FOUND ON THE **EGYPTIAN FRONTLINE SQUADRON** SPRUES

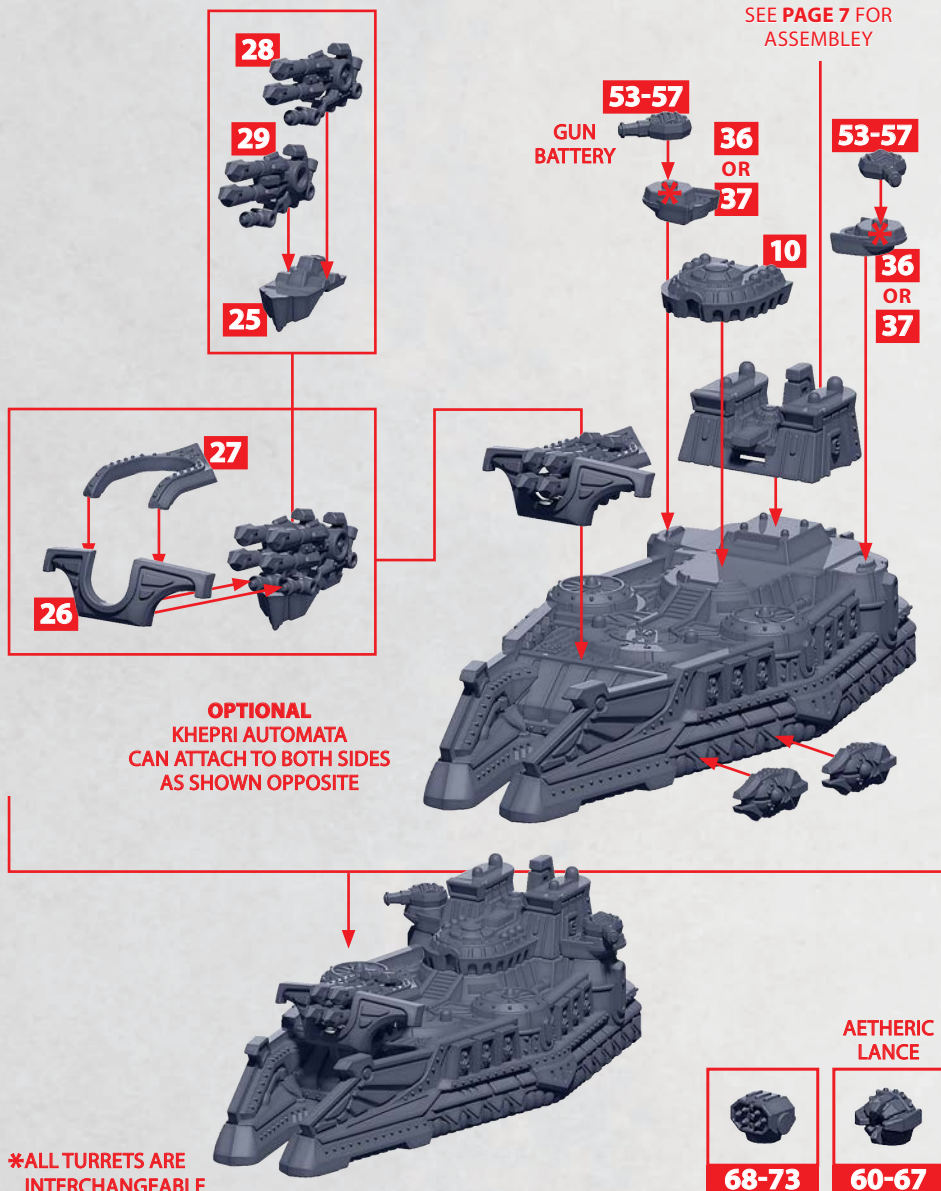




# SABAH BARRAGE SKIMMER

PARTS CAN BE FOUND ON THE **EGYPTIAN FRONTLINE SQUADRON** SPRUES

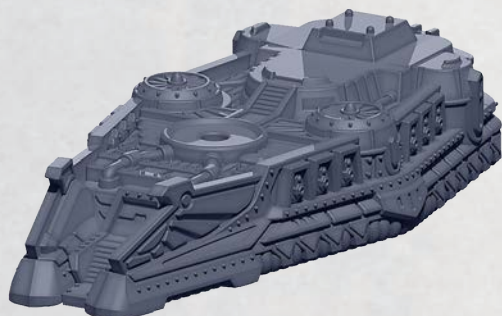
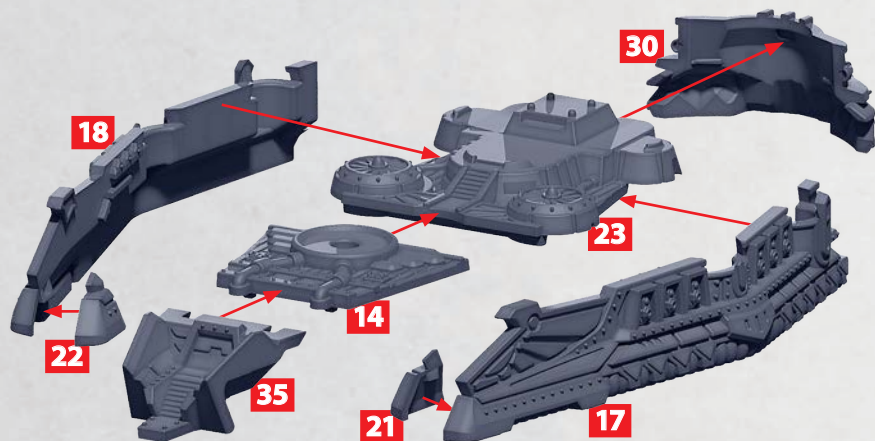
SEE **PAGE 7** FOR  
ASSEMBLY



\*ALL TURRETS ARE  
INTERCHANGEABLE

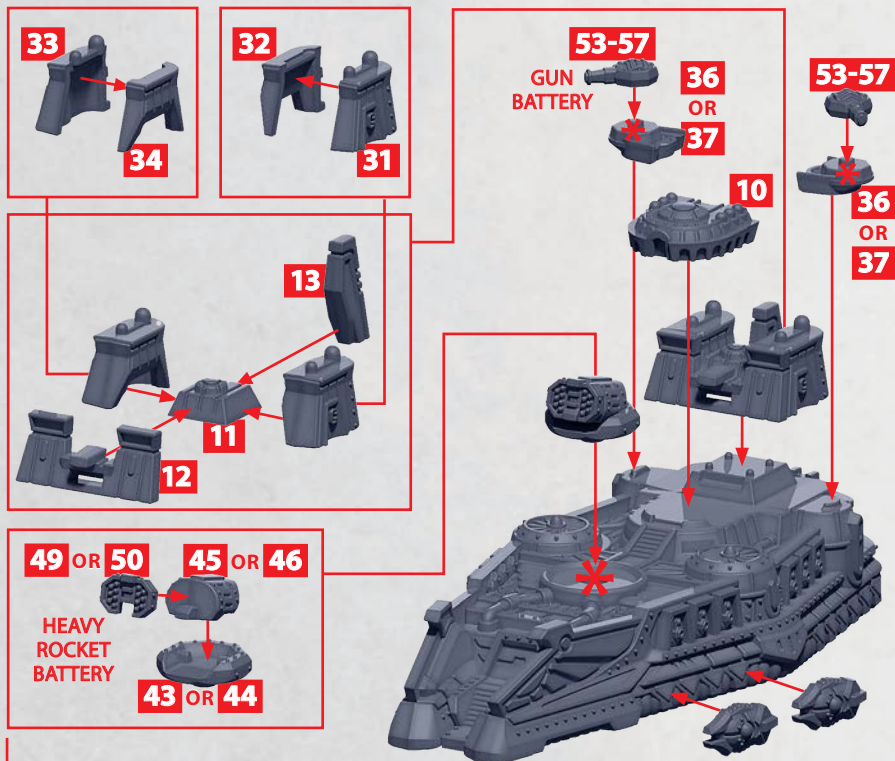
# SOBEK COASTAL SKIMMER

PARTS CAN BE FOUND ON THE **EGYPTIAN FRONTLINE SQUADRON** SPRUES

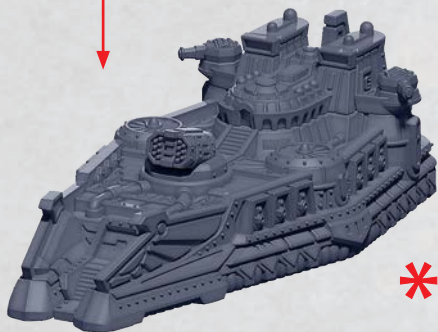


# SOBEK COASTAL SKIMMER

PARTS CAN BE FOUND ON THE **EGYPTIAN FRONTLINE SQUADRON** SPRUES



**OPTIONAL KHEPRI AUTOMATA CAN ATTACH TO BOTH SIDES AS SHOWN ABOVE**



**R** = RESIN

\*ALL TURRETS ARE INTERCHANGEABLE

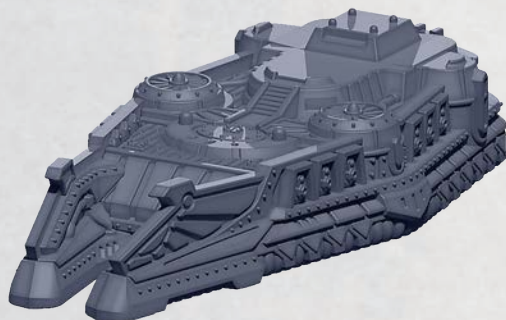
\*\*DOES NOT REQUIRE PARTS 45 OR 46





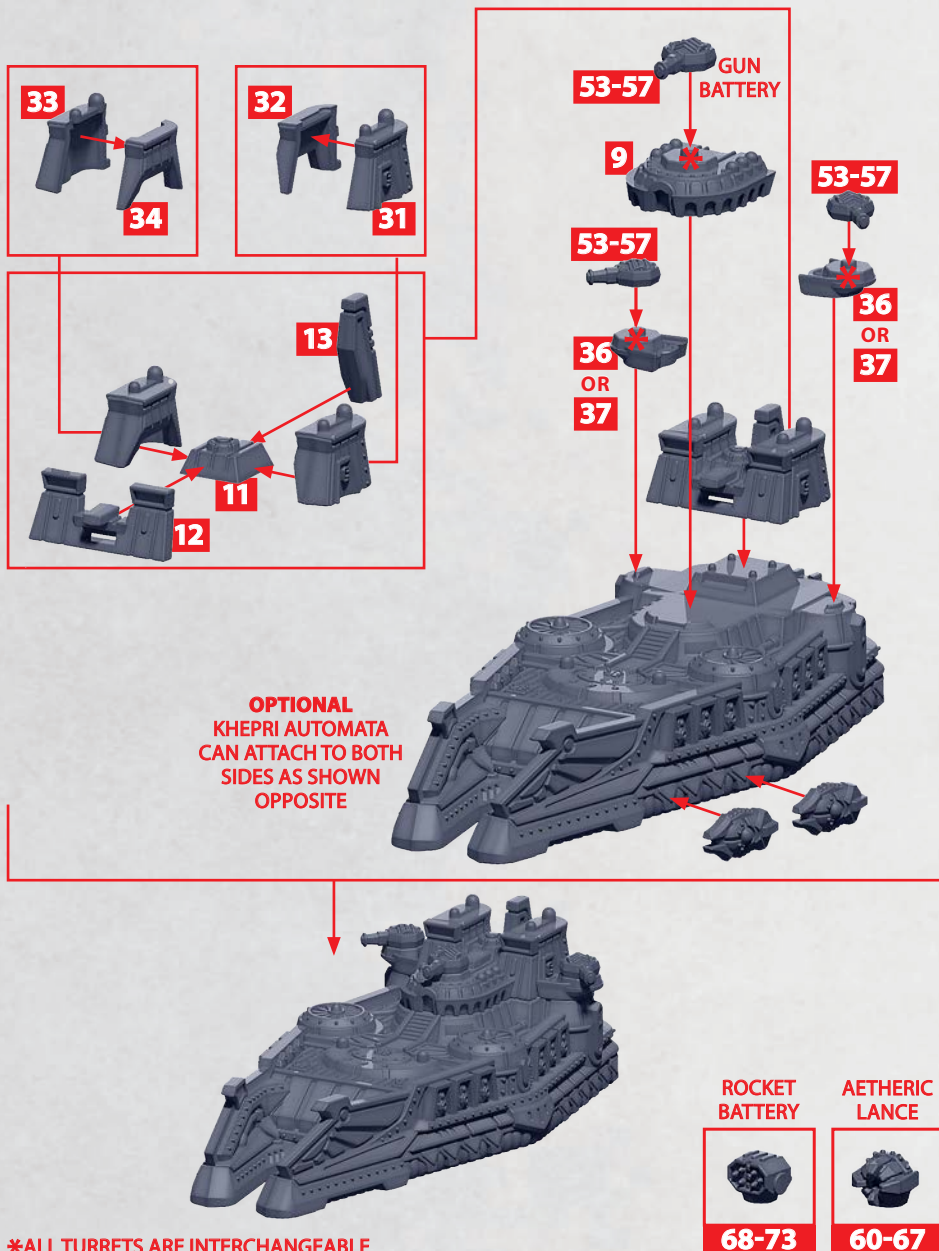
# MESEKTET STRIKE SKIMMER

PARTS CAN BE FOUND ON THE **EGYPTIAN FRONTLINE SQUADRON** SPRUES



# MESEKTET STRIKE SKIMMER

**PARTS CAN BE FOUND ON THE EGYPTIAN FRONTLINE SQUADRON SPRUES**

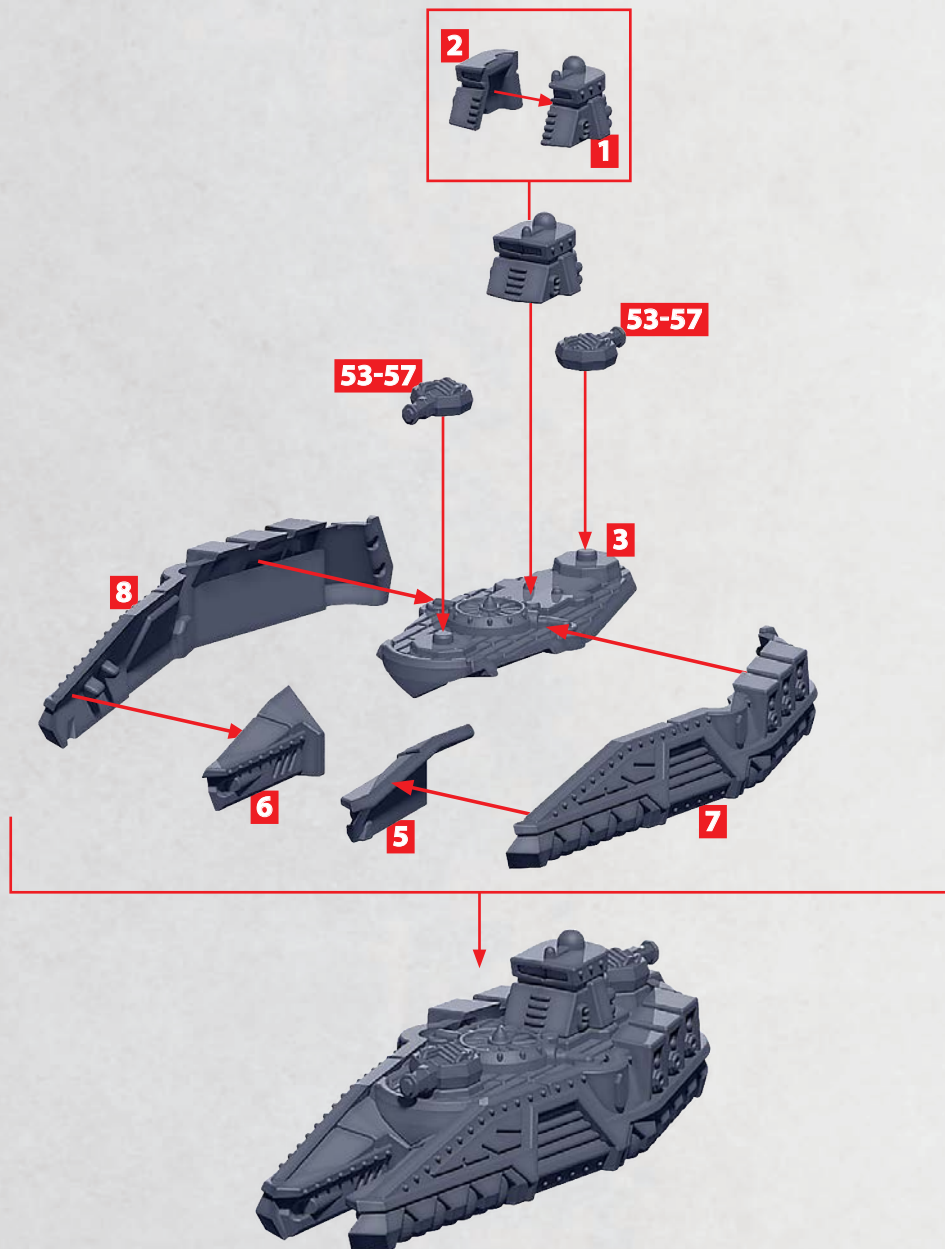


**\*ALL TURRETS ARE INTERCHANGEABLE**



# HASHASHIN FAST SKIMMER

PARTS CAN BE FOUND ON THE **EGYPTIAN FRONTLINE SQUADRON** SPRUES



# KOPESH DESTROYER SKIMMER

PARTS CAN BE FOUND ON THE EGYPTIAN FRONTLINE SQUADRON SPRUES



\*ALL TURRETS ARE INTERCHANGEABLE