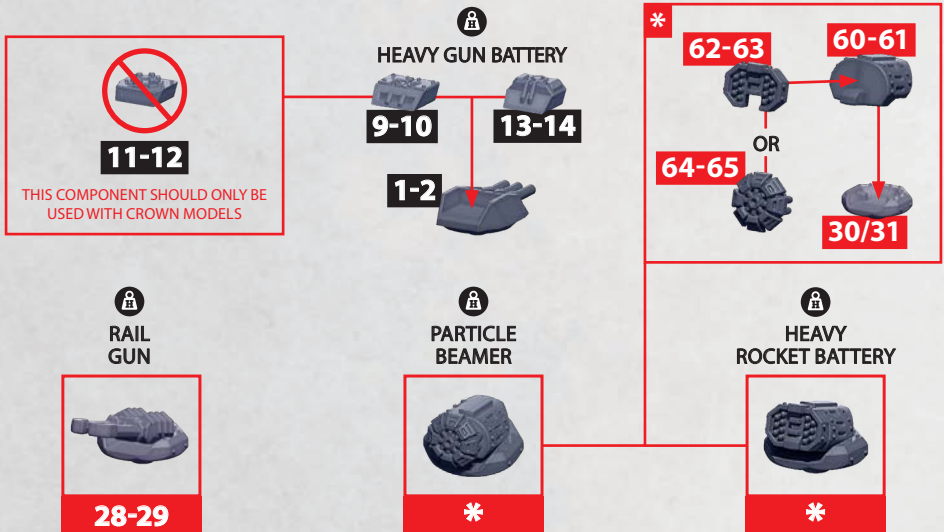


HARDPOINT ICONS (🔒 🗝️): WHEN A HARDPOINT ICON IS SHOWN IN THE ASSEMBLY INSTRUCTIONS FOR A MODEL, IT CAN BE BUILT WITH ANY OF THE TURRET OPTIONS FROM THIS PAGE THAT HAVE A MATCHING ICON. IT IS RECOMMENDED THESE TURRETS ARE NOT GLUED IN PLACE, SO THEY CAN BE SWITCHED OUT BETWEEN GAMES.

HEAVY HARDPOINT OPTIONS

PARTS CAN BE FOUND ON THE **SULTANATE FRONTLINE SQUADRONS SPRUE** AND **CROWN/SULTANATE ADD-ON SPRUE** (BLACK NUMBERS)



LIGHT HARDPOINT OPTIONS

PARTS CAN BE FOUND ON THE **SULTANATE FRONTLINE SQUADRONS SPRUE** AND **CROWN/SULTANATE ADD-ON SPRUE** (SOME HARDPOINT OPTIONS)



GENERATOR OPTIONS

PARTS CAN BE FOUND ON THE **SULTANATE FRONTLINE SQUADRONS SPRUE**
AND **CROWN/SULTANATE ADD-ON SPRUE** (BLACK NUMBERS)

NOTE: ON SOME MODELS, GENERATORS CAN REPLACE HEAVY HARDPOINTS (🔒) OR AS AN ALTERNATIVE TO AN ALREADY EXISTING GENERATOR. SEE YOUR ORBAT FOR SPECIFIC OPTIONS.

PORTAL
GENERATOR



32

SHIELD
GENERATOR



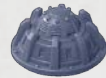
1

FURY
GENERATOR



2

ATOMIC
GENERATOR



3

MAGNETIC
GENERATOR



4

REPULSION FIELD
GENERATOR



5

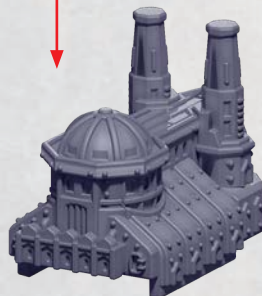
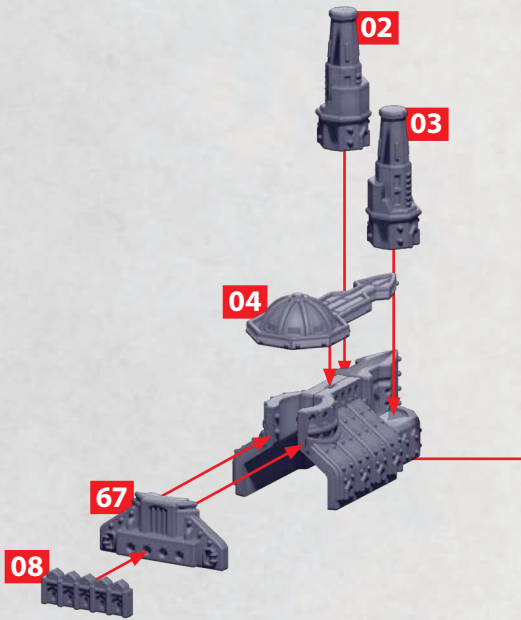
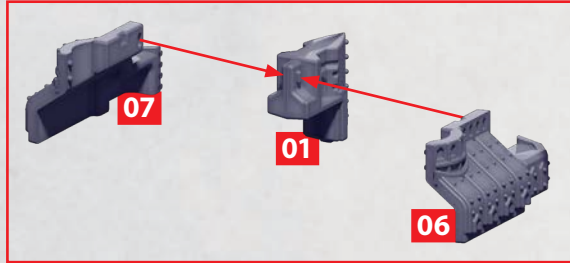
SHROUD
GENERATOR



6

CRUISERS & MONITOR GUN BRIDGE ASSEMBLY

PARTS CAN BE FOUND ON THE **SULTANATE FRONTLINE SQUADRONS** SPRUES

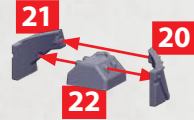
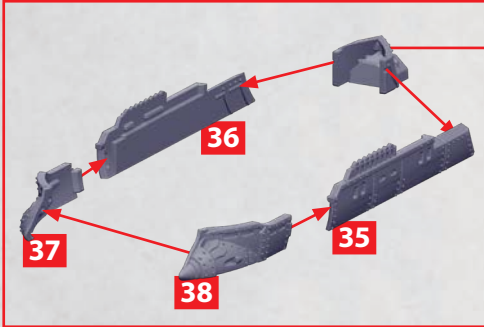


USED WITH

- SADRAZAM HEAVY CRUISER
- IZMIR MONITOR
- PASHA FAST CRUISER
- ISKANDAR CRUISER

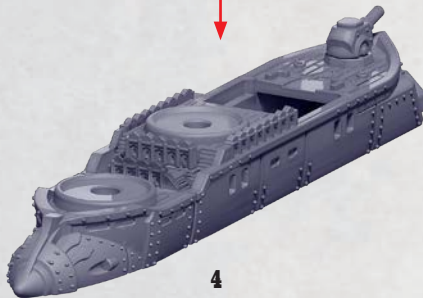
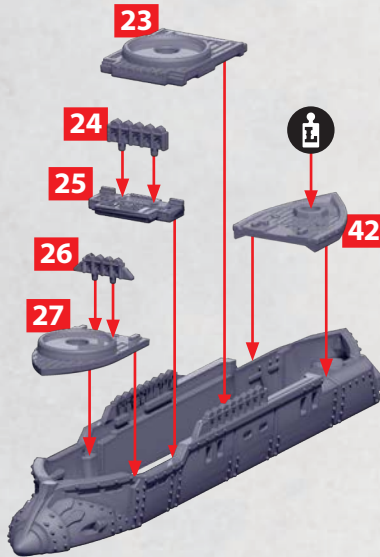
SADRAZAM HEAVY CRUISER AND MEHMED COMMAND CRUISER HULL ASSEMBLY

PARTS CAN BE FOUND ON THE **SULTANATE FRONTLINE SQUADRONS** SPRUES AND
CROWN/SULTANATE ADD ON SPRUE (SOME HARDPOINT (H) OPTIONS)



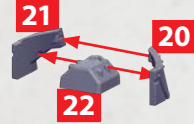
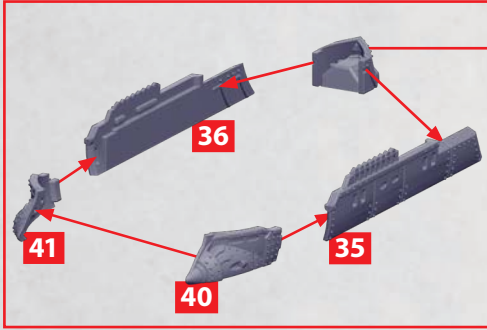
USE WITH

- SADRAZAM HEAVY CRUISER
- MEHMED COMMAND CRUISER
- BAYEZID GRAND CRUISER
- PASHA FAST CRUISER



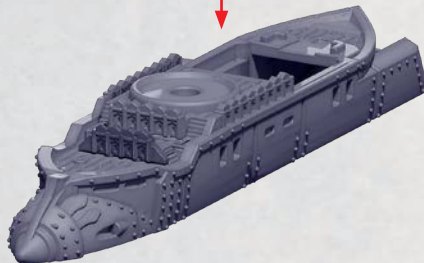
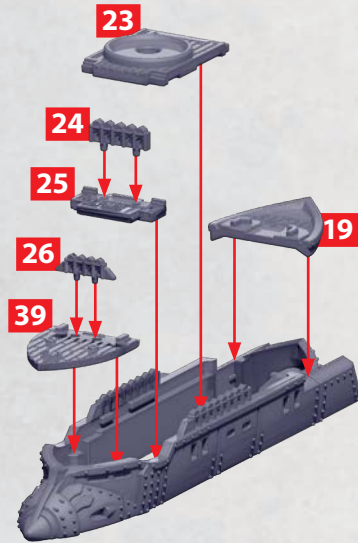
IZMIR MONITOR HULL ASSEMBLY

PARTS CAN BE FOUND ON THE **SULTANATE FRONTLINE SQUADRONS** SPRUES



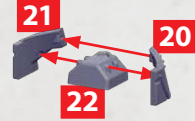
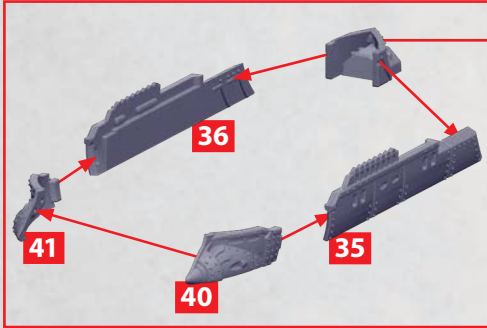
USED WITH

- IZMIR MONITOR
- ISKANDAR CRUISER



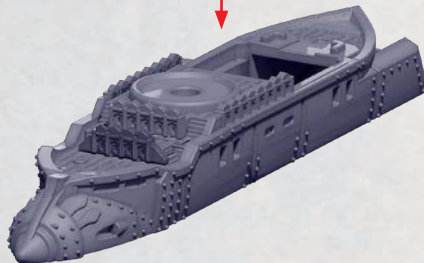
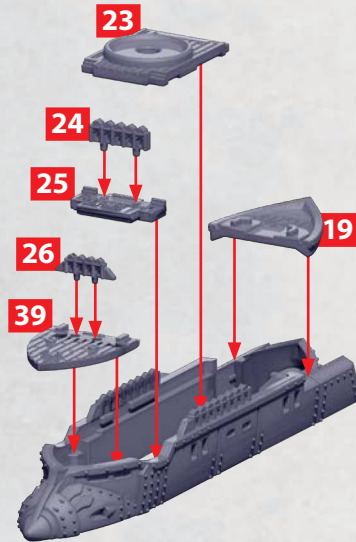
BAYEZID GRAND CRUISER HULL ASSEMBLY

PARTS CAN BE FOUND ON THE **SULTANATE FRONTLINE SQUADRONS** SPRUES



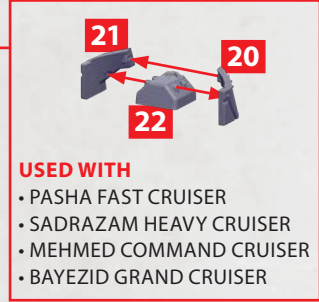
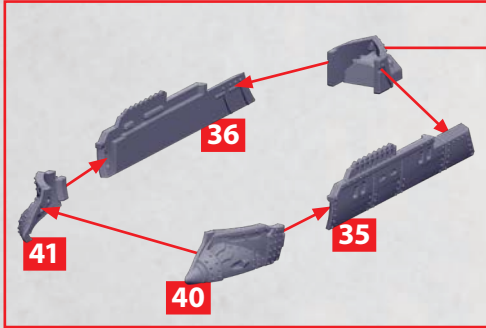
USED WITH

- BAYEZID GRAND CRUISER
- SADRAZAM HEAVY CRUISER
- MEHMED COMMAND CRUISER
- PASHA FAST CRUISER



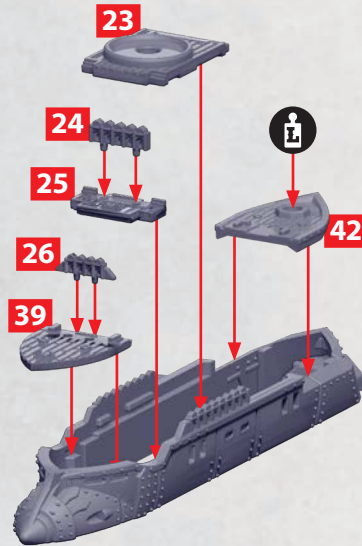
PASHA FAST CRUISER HULL ASSEMBLY

PARTS CAN BE FOUND ON THE **SULTANATE FRONTLINE SQUADRONS** SPRUES AND
CROWN/SULTANATE ADD ON SPRUE (SOME HARDPOINT (E) OPTIONS)



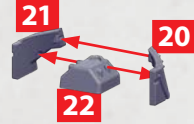
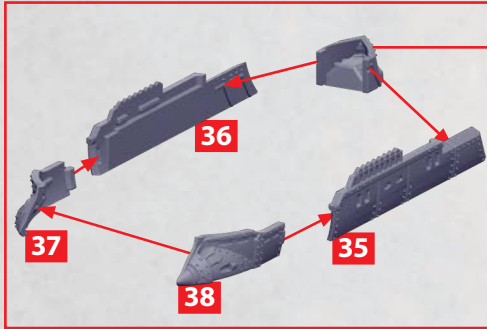
USED WITH

- PASHA FAST CRUISER
- SADRAZAM HEAVY CRUISER
- MEHMED COMMAND CRUISER
- BAYEZID GRAND CRUISER



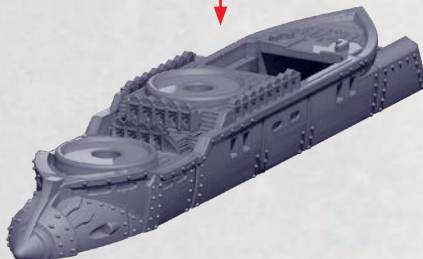
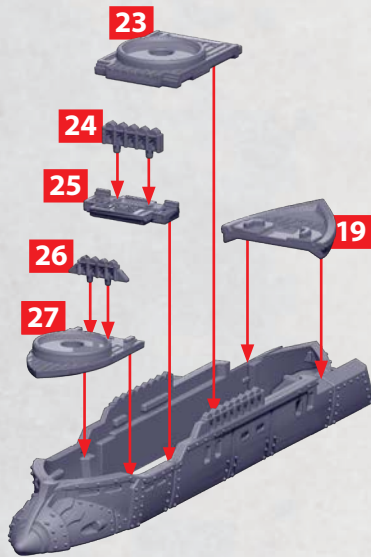
ISKANDAR CRUISER HULL ASSEMBLY

PARTS CAN BE FOUND ON THE **SULTANATE FRONTLINE SQUADRONS** SPRUES



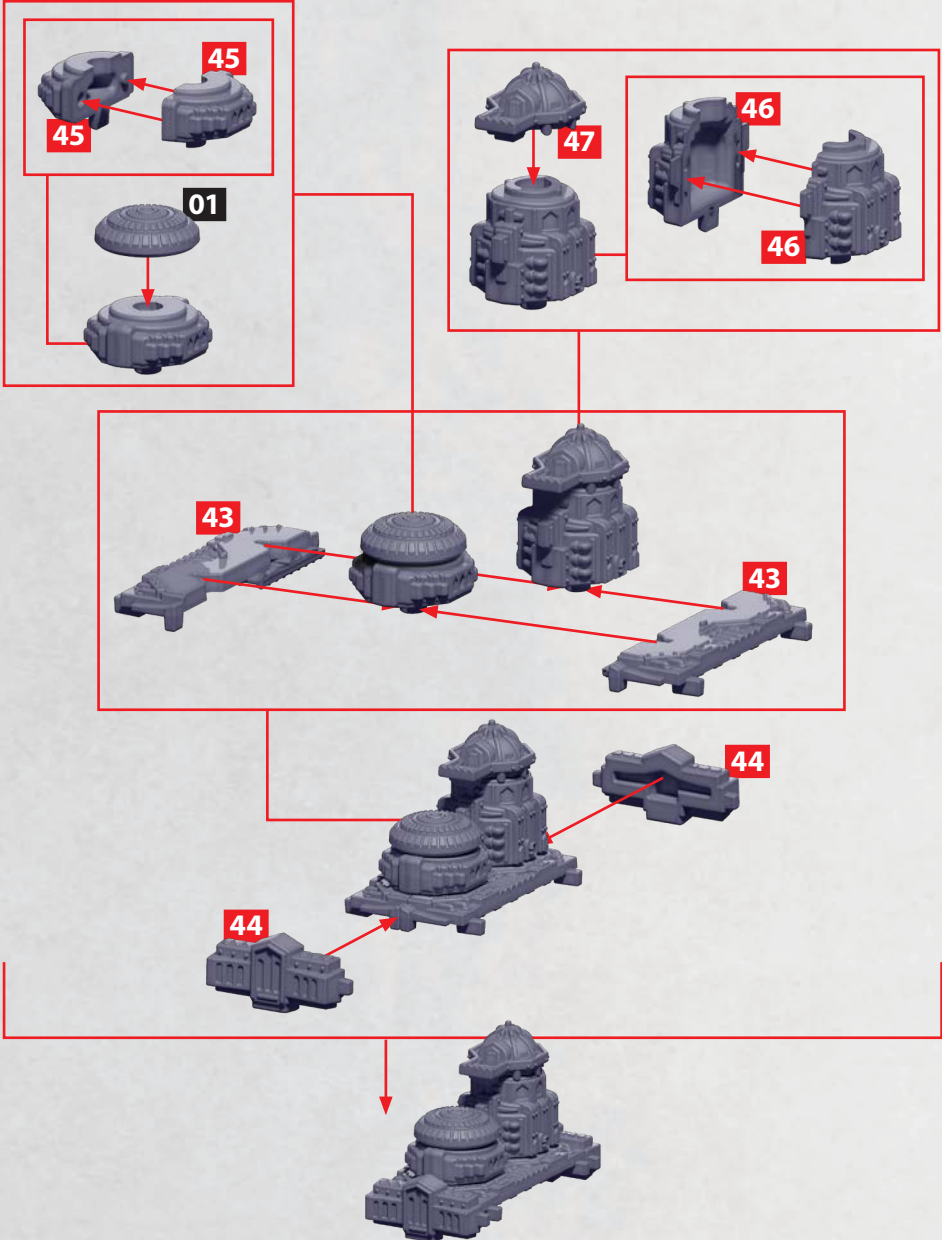
USED WITH

- IZMIR MONITOR
- ISKANDAR CRUISER



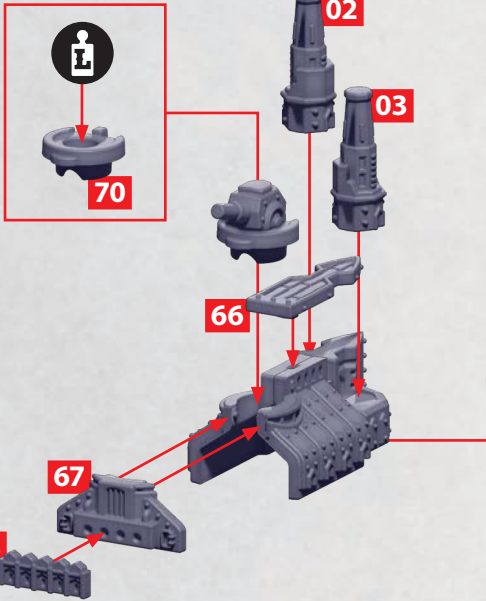
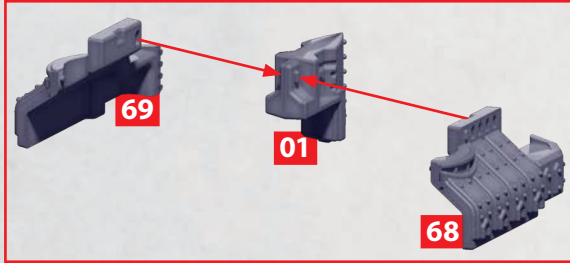
BAYEZID & MEHMED BRIDGE ASSEMBLY

PARTS CAN BE FOUND ON THE **SULTANATE FRONTLINE SQUADRONS SPRUE**
AND **CROWN/SULTANATE ADD-ON SPRUE** (BLACK NUMBERS)



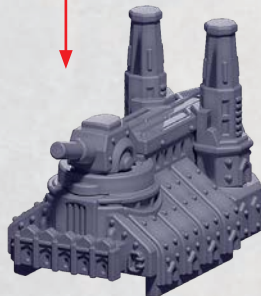
BAYEZID & MEHMED GUN TOWER ASSEMBLY

PARTS CAN BE FOUND ON THE **SULTANATE FRONTLINE SQUADRONS** SPRUE AND
CROWN/SULTANATE ADD ON SPRUE (SOME HARDPOINT (L) OPTIONS)



USED WITH

- BAYEZID GRAND CRUISER
- MEHMED COMMAND CRUISER



BAYEZID GRAND CRUISER SHIP BUILD

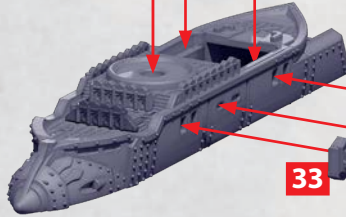
PARTS CAN BE FOUND ON THE **SULTANATE FRONTLINE SQUADRONS SPRUE** AND **CROWN/SULTANATE ADD ON SPRUE** (SOME HARDPOINT (H) OPTIONS)



EXAMPLE BUILD FOR ONE HEAVY HARDPOINT OPTION, SEE **PAGE 1** FOR HARDPOINT OPTIONS



SEE **PAGE 10** FOR BUILD



SEE **PAGE 6** FOR HULL BUILD

NOTE: ONLY REPEAT BUILD ON OPPOSITE SIDE WITH **PARTS 13, 14, 15, 16, PART 17 AND PART 34** WHEN BUILDING LEFT SHIP

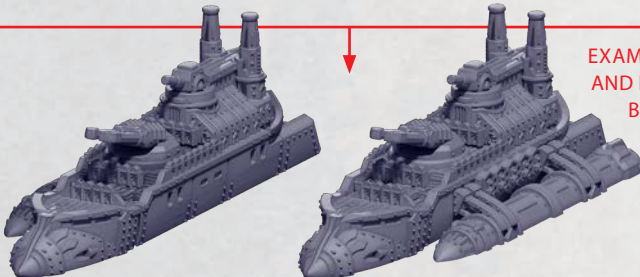
33

9/10

11/12



18

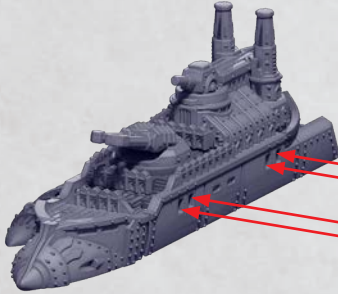


EXAMPLES SHOW LEFT AND RIGHT SIDES FOR BAYEZID BASE

BAYEZID GRAND CRUISER ASSEMBLY

PARTS CAN BE FOUND ON THE **SULTANATE FRONTLINE SQUADRONS** SPRUES

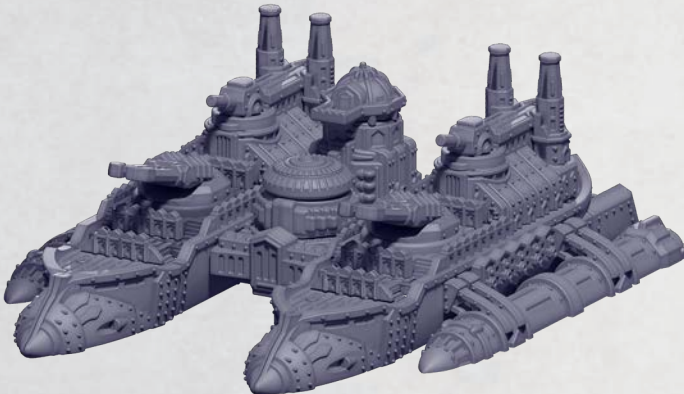
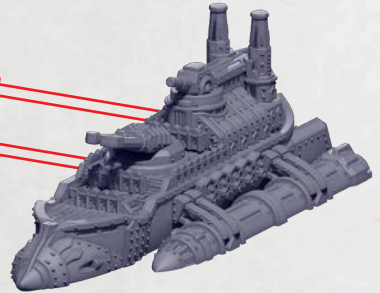
SEE PAGE 6 AND PAGE 11
FOR LEFT BODY BUILD



SEE PAGE 9 FOR
BRIDGE BUILD



SEE PAGE 6 AND PAGE 11
FOR RIGHT BODY BUILD



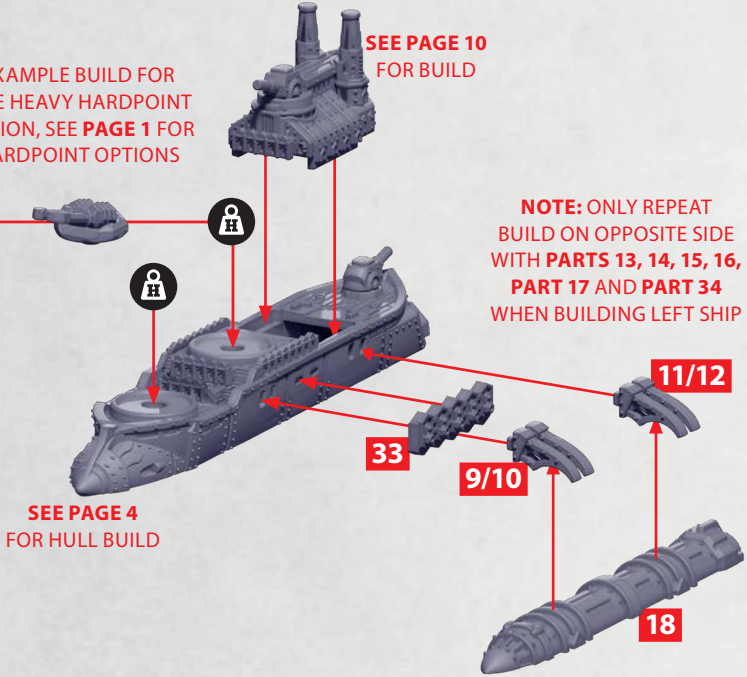
MEHMED COMMAND CRUISER SHIP BUILD

PARTS CAN BE FOUND ON THE **SULTANATE FRONTLINE SQUADRONS SPRUE** AND **CROWN/SULTANATE ADD ON SPRUE** (SOME HARDPOINT (H) OPTIONS)



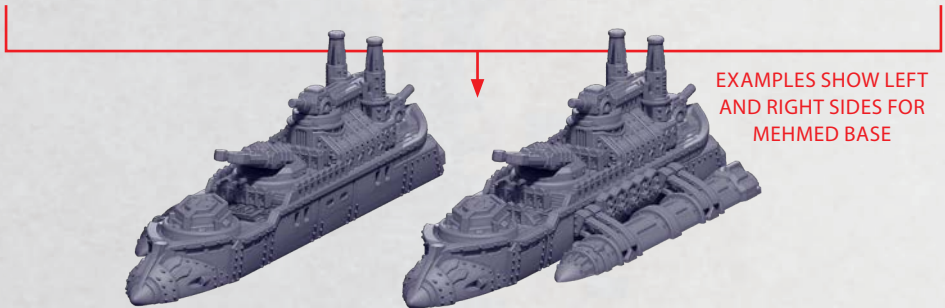
EXAMPLE BUILD FOR ONE HEAVY HARDPOINT OPTION, SEE **PAGE 1** FOR HARDPOINT OPTIONS

SEE **PAGE 10** FOR BUILD



NOTE: ONLY REPEAT BUILD ON OPPOSITE SIDE WITH **PARTS 13, 14, 15, 16, PART 17** AND **PART 34** WHEN BUILDING LEFT SHIP

SEE **PAGE 4** FOR HULL BUILD

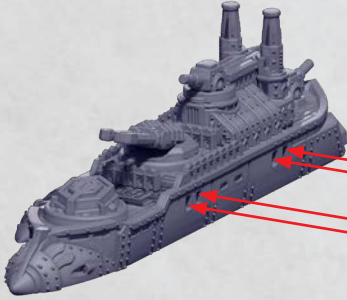


EXAMPLES SHOW LEFT AND RIGHT SIDES FOR MEHMED BASE

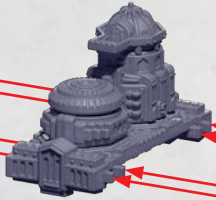
MEHMED COMMAND CRUISER ASSEMBLY

PARTS CAN BE FOUND ON THE **SULTANATE FRONTLINE SQUADRONS** SPRUES

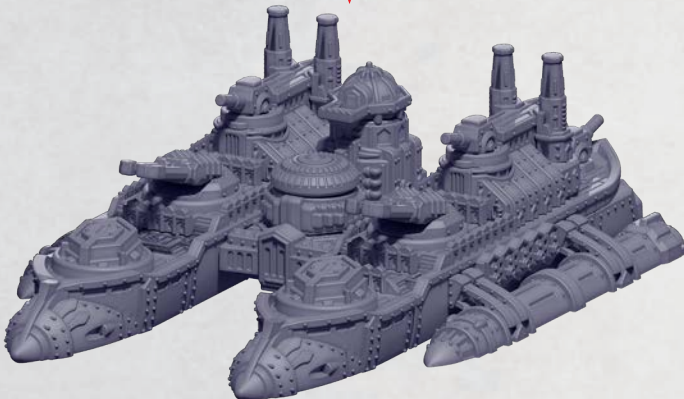
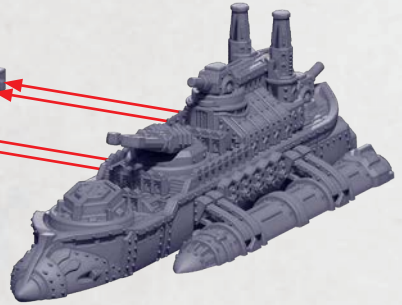
SEE PAGE 4 AND 13
FOR LEFT BODY BUILD



SEE PAGE 9 FOR
BRIDGE BUILD



SEE PAGES 4 AND 13
FOR RIGHT BODY BUILD



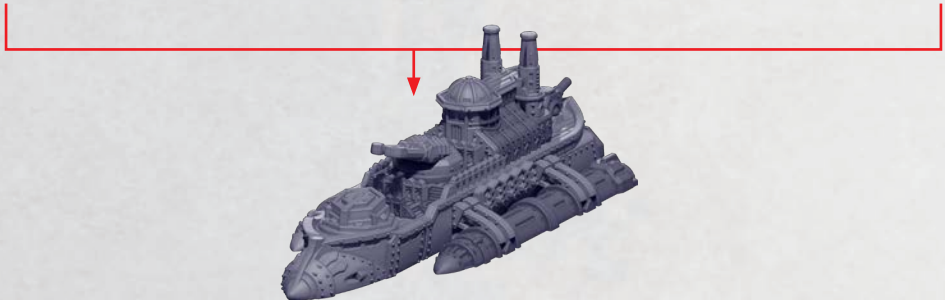
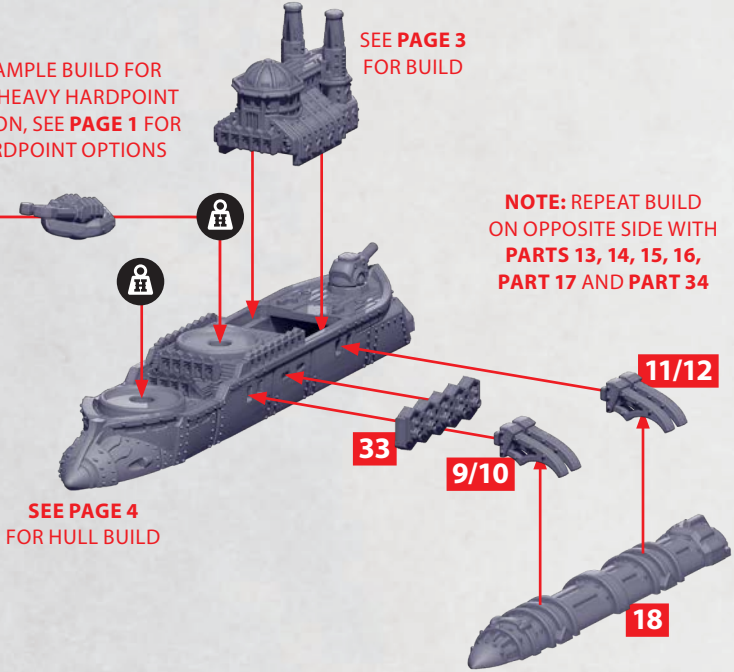
SADRAZAM HEAVY CRUISER

PARTS CAN BE FOUND ON THE **SULTANATE FRONTLINE SQUADRONS SPRUE** AND
CROWN/SULTANATE ADD ON SPRUE (SOME HARDPOINT (H) OPTIONS)



EXAMPLE BUILD FOR
ONE HEAVY HARDPOINT
OPTION, SEE **PAGE 1** FOR
HARDPOINT OPTIONS

SEE **PAGE 3**
FOR BUILD



IZMIR MONITOR

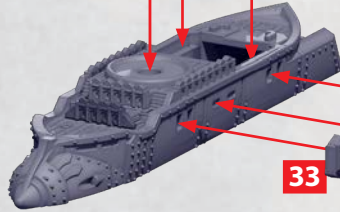
PARTS CAN BE FOUND ON THE **SULTANATE FRONTLINE SQUADRONS** SPRUES AND
CROWN/SULTANATE ADD ON SPRUE (SOME HARDPOINT (H) OPTIONS)



EXAMPLE BUILD FOR
ONE HEAVY HARDPOINT
OPTION, SEE **PAGE 1** FOR
HARDPOINT OPTIONS



SEE **PAGE 3**
FOR BUILD



SEE **PAGE 5**
FOR HULL BUILD

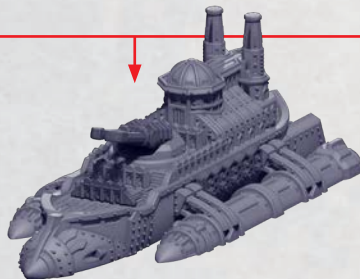
NOTE: REPEAT BUILD
ON OPPOSITE SIDE WITH
PARTS 13, 14, 15, 16,
PART 17 AND PART 34

33

9/10

11/12

18



PASHA FAST CRUISER

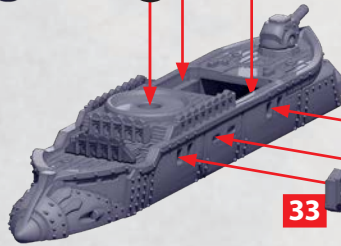
PARTS CAN BE FOUND ON THE **SULTANATE FRONTLINE SQUADRONS SPRUE AND CROWN/SULTANATE ADD ON SPRUE (SOME HARDPOINT (H) OPTIONS)**



EXAMPLE BUILD FOR ONE HEAVY HARDPOINT OPTION, SEE **PAGE 1** FOR HARDPOINT OPTIONS



SEE **PAGE 3**
FOR BUILD



SEE **PAGE 7**
FOR HULL BUILD

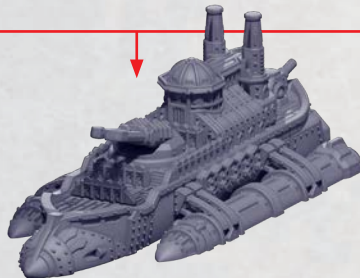
NOTE: REPEAT BUILD ON OPPOSITE SIDE WITH **PARTS 13, 14, 15, 16, PART 17 AND PART 34**

33

9/10

11/12

18



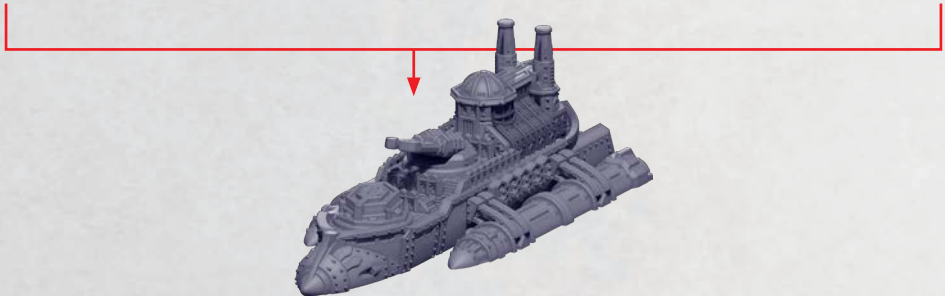
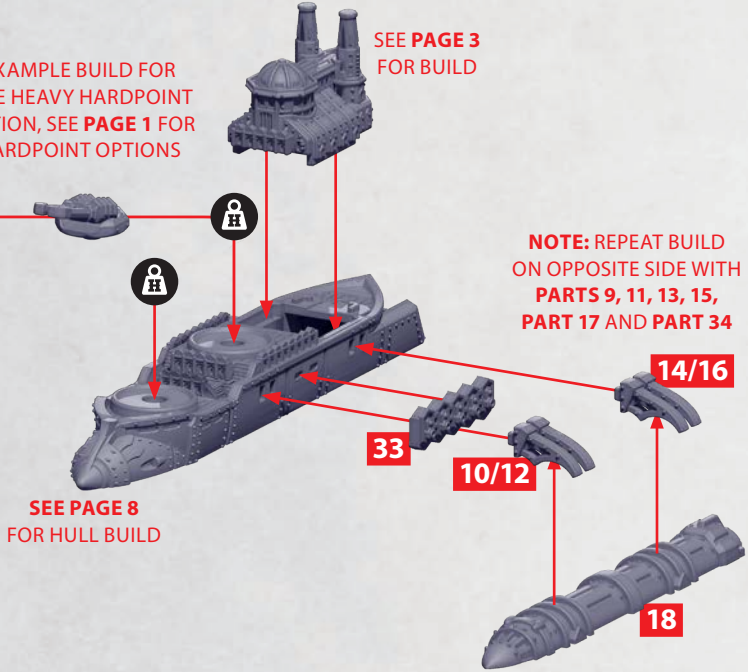
ISKANDAR CRUISER

PARTS CAN BE FOUND ON THE **SULTANATE FRONTLINE SQUADRONS** SPRUES AND
CROWN/SULTANATE ADD ON SPRUE (SOME HARDPOINT (H) OPTIONS)



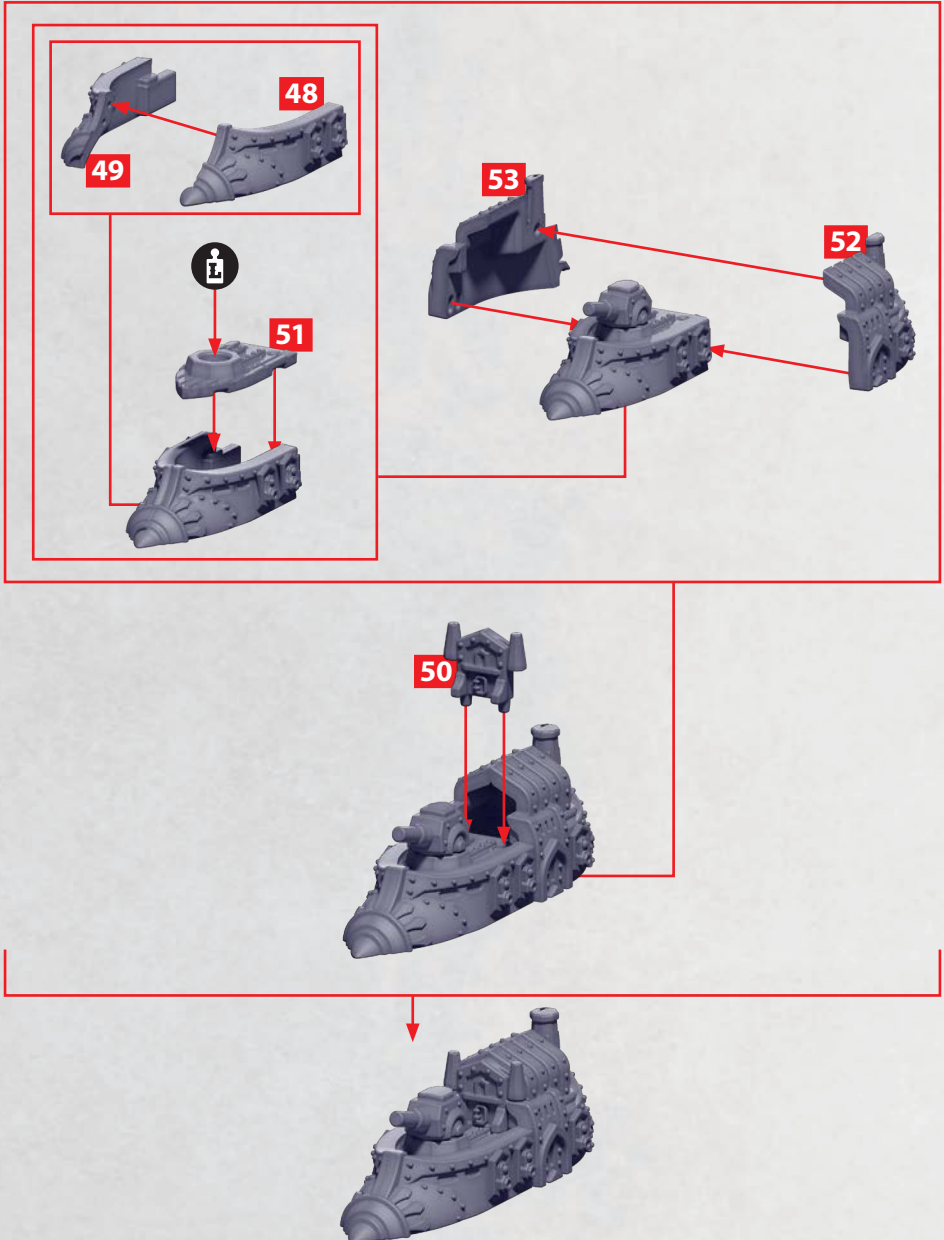
EXAMPLE BUILD FOR
ONE HEAVY HARDPOINT
OPTION, SEE **PAGE 1** FOR
HARDPOINT OPTIONS

SEE **PAGE 3**
FOR BUILD



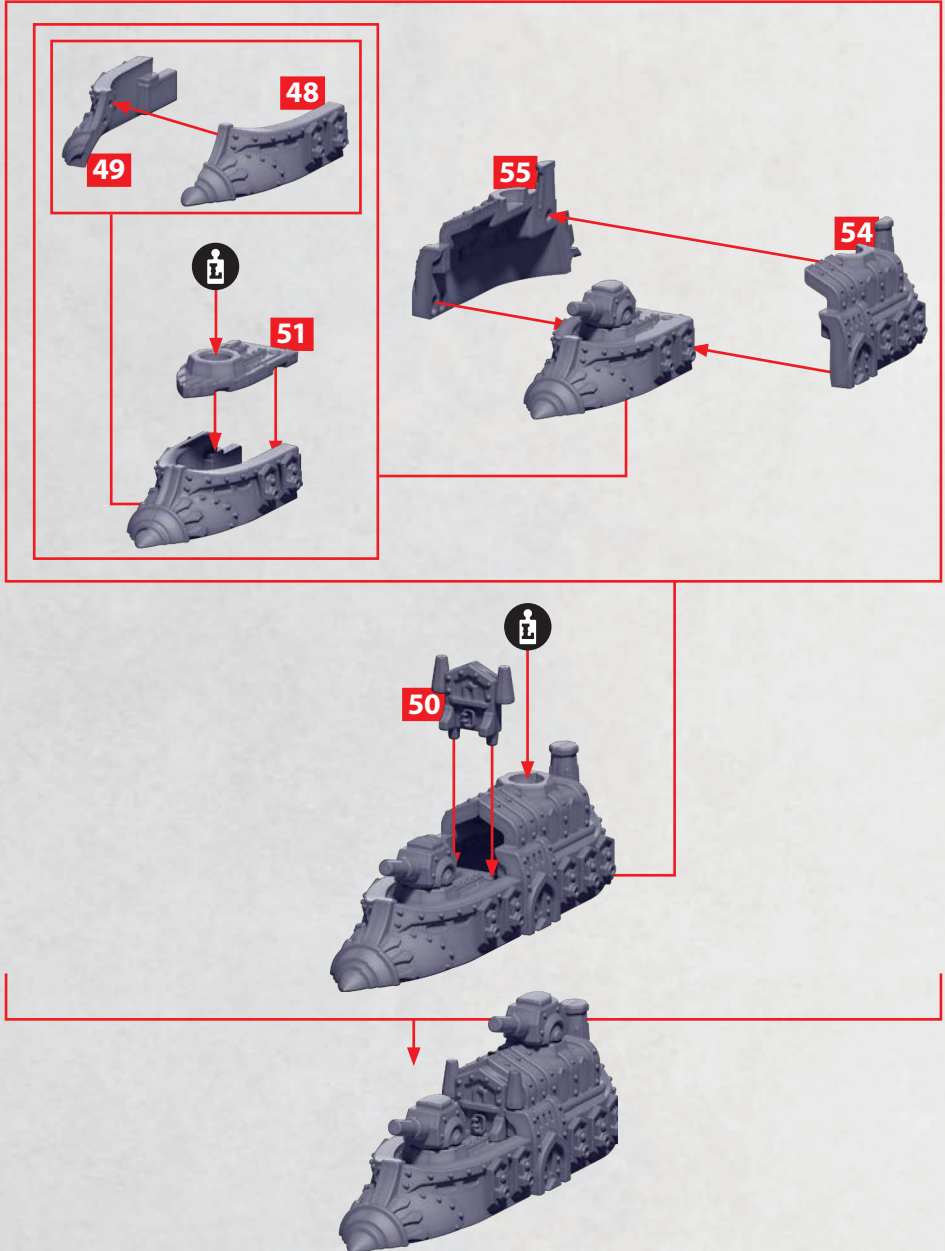
TEMIR FRIGATE

PARTS CAN BE FOUND ON THE **SULTANATE FRONTLINE SQUADRONS** SPRUE AND
CROWN/SULTANATE ADD ON SPRUE (SOME HARDPOINT (i) OPTIONS)



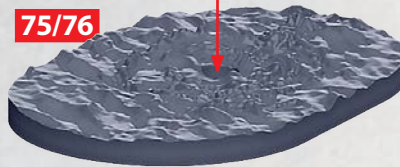
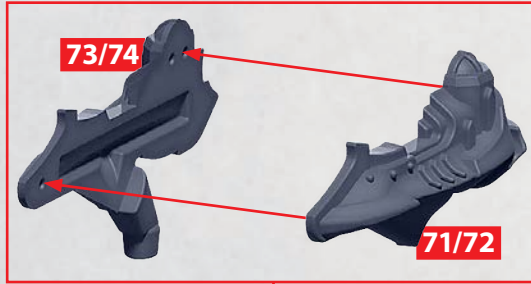
CELIK DESTROYER

PARTS CAN BE FOUND ON THE **SULTANATE FRONTLINE SQUADRONS SPRUE** AND
CROWN/SULTANATE ADD ON SPRUE (SOME HARDPOINT (I) OPTIONS)



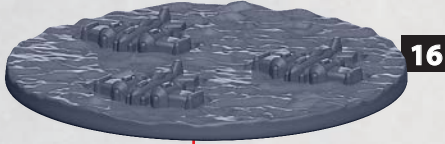
FERIK DESTROYER

PARTS CAN BE FOUND ON THE **SULTANATE FRONTLINE SQUADRONS** SPRUE



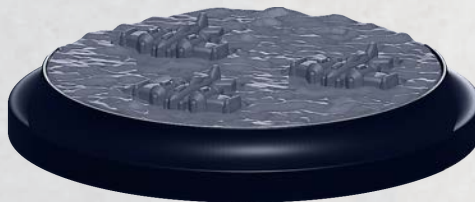
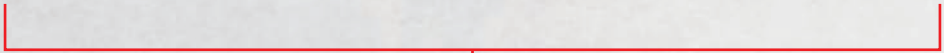
SRS TOKENS

PARTS CAN BE FOUND ON THE **SULTANATE FRONTLINE SQUADRONS SPRUE**
AND **CROWN/SULTANATE ADD-ON SPRUE** (BLACK NUMBERS)



15

THIS COMPONENT
IS ONLY USED IN
CROWN FORCES.



22