

DOMINION OF THE DRAGON
EMPIRE
FACTION
ASSEMBLY GUIDE



HARDPOINT ICONS (🔒 🛡️): WHEN A HARDPOINT ICON IS SHOWN IN THE ASSEMBLY INSTRUCTIONS FOR A MODEL, IT CAN BE BUILT WITH ANY OF THE TURRET OPTIONS FROM THIS PAGE THAT HAVE A MATCHING ICON. IT IS RECOMMENDED THESE TURRETS ARE NOT GLUED IN PLACE, SO THEY CAN BE SWITCHED OUT BETWEEN GAMES.

EMPIRE HEAVY HARDPOINT OPTIONS

PARTS CAN BE FOUND ON THE **JAPANESE FRONTLINE SQUADRONS SPRUE** (RED NUMBERS), **KOREAN AERIAL SQUADRONS SPRUE** (GREY NUMBERS) AND **ENLIGHTENED/EMPIRE ADD-ON SPRUE** (BLACK NUMBERS)




11-12

THIS COMPONENT SHOULD ONLY BE USED WITH ENLIGHTENED MODELS

HEAVY GUN BATTERY

🔒



13-14 **9-10**

1-2

BAOYU REPEATING GUN

🔒



16 **64-65** **65**

🔒

HEAVY ALCHEMICAL ROCKET BATTERY



66-67 **67**

🔒

HEAVY CORROSIVE MORTAR



68-69 **68**

🔒

HEAVY HUOQIANG



70 **66**

EMPIRE LIGHT HARDPOINT OPTIONS

PARTS CAN BE FOUND ON THE **JAPANESE FRONTLINE SQUADRONS SPRUE**, **KOREAN AERIAL SQUADRONS SPRUE** (GREY NUMBERS) AND **ENLIGHTENED/EMPIRE ADD-ON SPRUE** (SOME HARDPOINT OPTIONS)

🛡️

LIGHT GUN BATTERY



7-8

🛡️

CAP CAP FLAK GUN



72-74

🛡️

LIGHT ALCHEMICAL ROCKET BATTERY



55-57 **14-15**

🛡️

LIGHT CORROSIVE MORTAR



58-60

EMPIRE GENERATOR OPTIONS

PARTS CAN BE FOUND ON THE **JAPANESE FRONTLINE SQUADRONS SPRUE**,
KOREAN AERIAL SQUADRONS SPRUE (GREY NUMBERS) **AND**
ENLIGHTENED/EMPIRE ADD-ON SPRUE (BLACK NUMBERS)

NOTE: ON SOME MODELS, GENERATORS CAN REPLACE HEAVY HARDPOINTS (H) OR AS AN ALTERNATIVE TO AN ALREADY EXISTING GENERATOR. SEE YOUR ORBAT FOR SPECIFIC OPTIONS.

INTERPHASE
GENERATOR



GREAT WALL
GENERATOR



MAGMA
GENERATOR



SHIELD
GENERATOR



FURY
GENERATOR



ATOMIC
GENERATOR



MAGNETIC
GENERATOR



REPULSION FIELD
GENERATOR

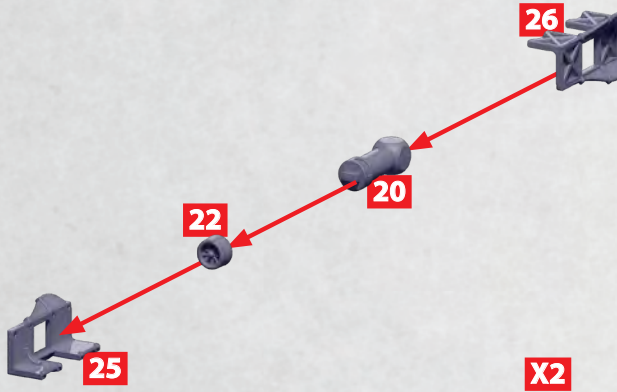


SHROUD
GENERATOR



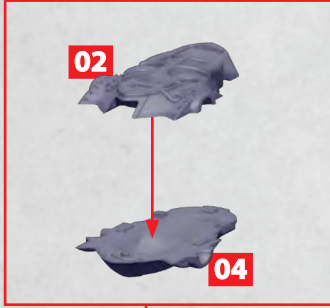
BANGPAE EXPLOSIVE AUTOMATA

PARTS CAN BE FOUND ON THE KOREAN AERIAL SQUADRON SPRUES



AIRCRAISERS/ROTORS BODY ASSEMBLY

PARTS CAN BE FOUND ON THE **KOREAN AERIAL SQUADRON** SPRUES

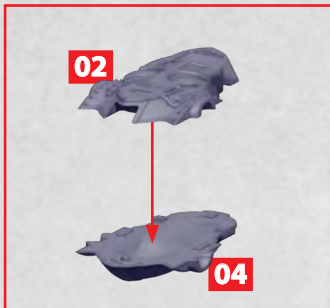


USED WITH

- HWANUNG GENERATOR CRUISER
- SANSHIN JUDGEMENT CRUISER

AIRCRAISERS/ROTORS BODY ASSEMBLY

PARTS CAN BE FOUND ON THE **KOREAN AERIAL SQUADRON** SPRUES

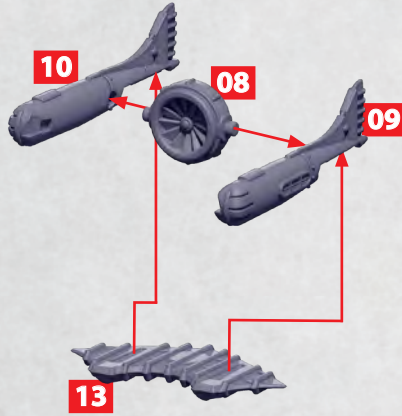


USED WITH

- HOBKBEOL ASSAULT ROTOR

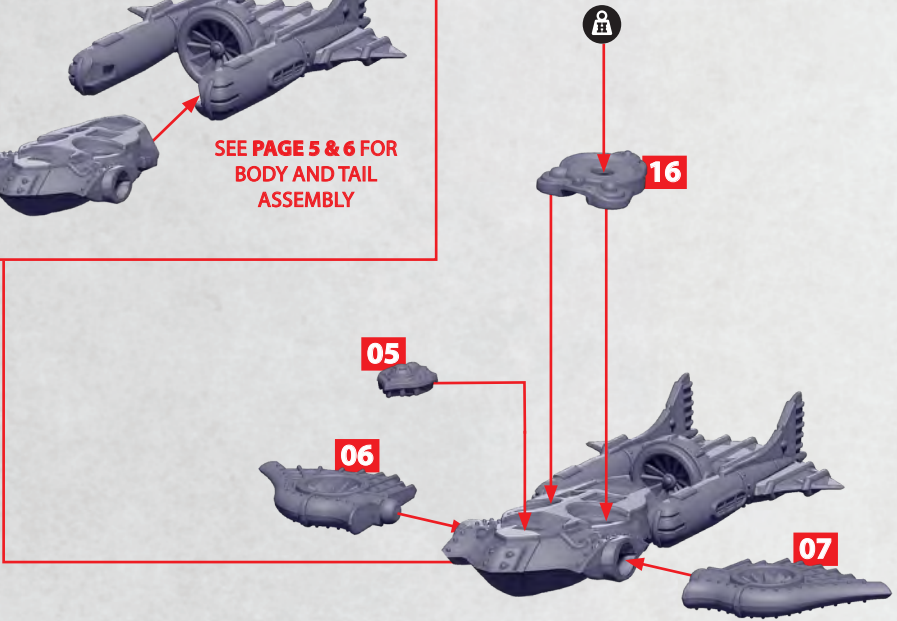
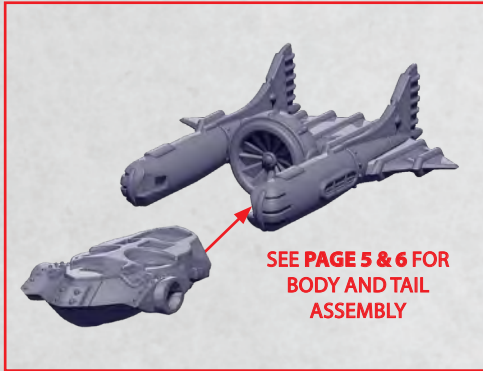
AIRCRAISERS/ROTORs TAIL ASSEMBLY

PARTS CAN BE FOUND ON THE KOREAN AERIAL SQUADRON SPRUES



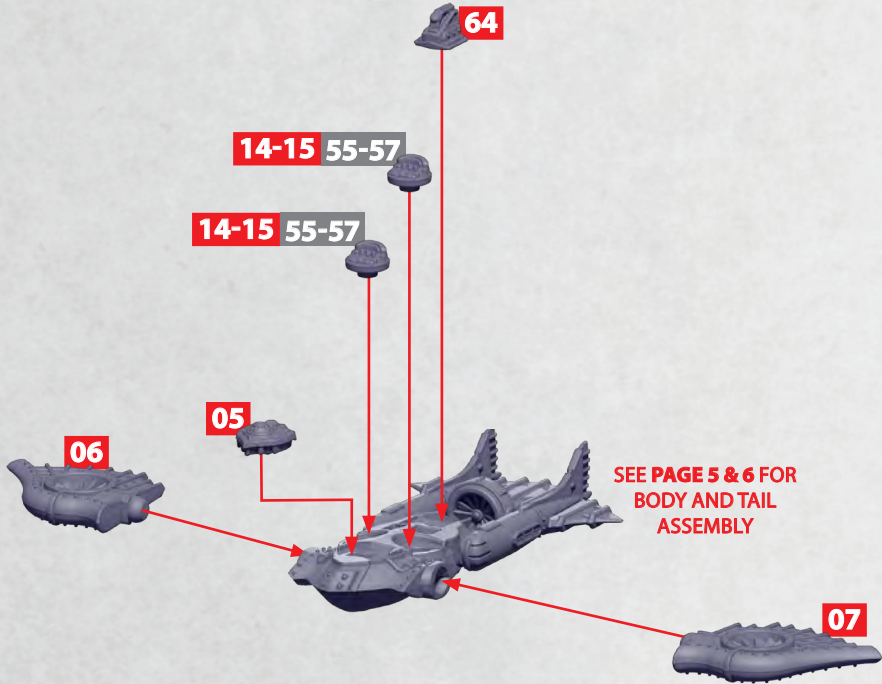
HWANUNG GENERATOR CRUISER

PARTS CAN BE FOUND ON THE **KOREAN AERIAL SQUADRON** SPRUE AND
ENLIGHTENED/EMPIRE ADD-ON SPRUE (SOME HARDPOINT (🔒/🔧) OPTIONS)



SANSHIN JUDGEMENT CRUISER

PARTS CAN BE FOUND ON THE **KOREAN AERIAL SQUADRON SPRUE**
JAPANESE FRONTLINE SQUADRONS SPRUE (GREY NUMBERS)



HOBAKBEOL ASSAULT ROTOR

PARTS CAN BE FOUND ON THE **KOREAN AERIAL SQUADRON SPRUE**
JAPANESE FRONTLINE SQUADRONS SPRUE (GREY NUMBERS)

12

11

X4

27

34

SEE PAGE 5 FOR
BODY ASSEMBLY

REPEAT BUILD
ON OPPOSITE SIDE

63

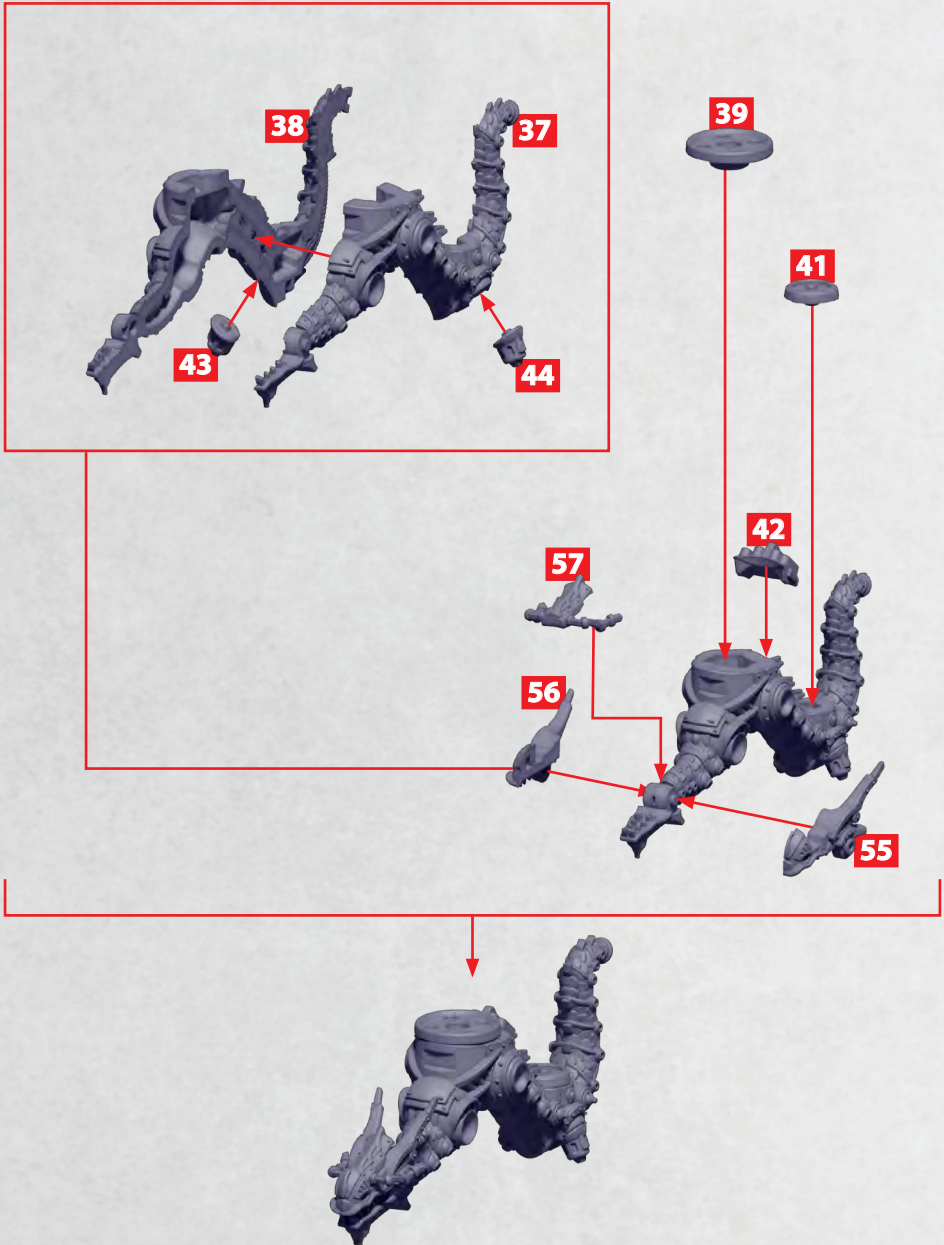
14-15 55-57

14-15 55-57

05

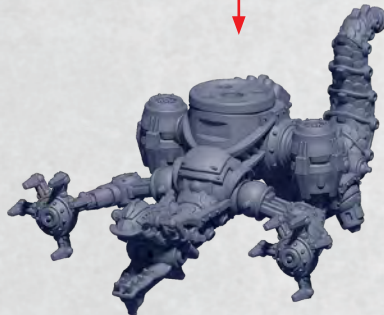
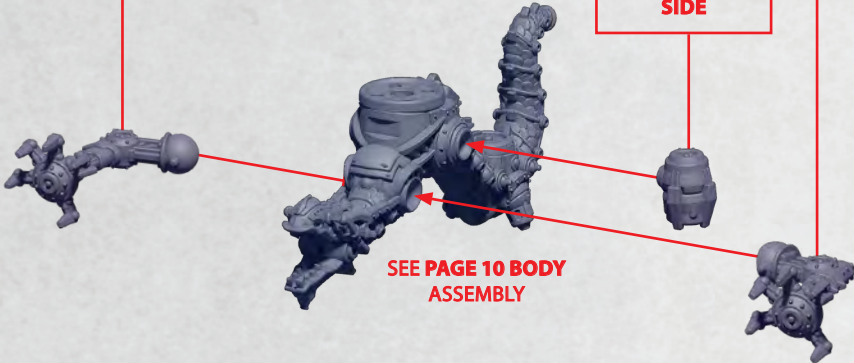
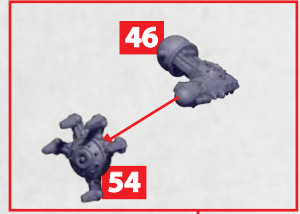
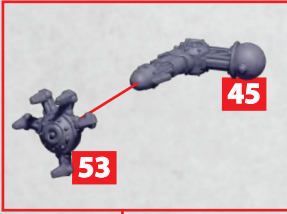
DRACONIC COLOSSUS - PROW ASSEMBLY

PARTS CAN BE FOUND ON THE **KOREAN AERIAL SQUADRON** SPRUE



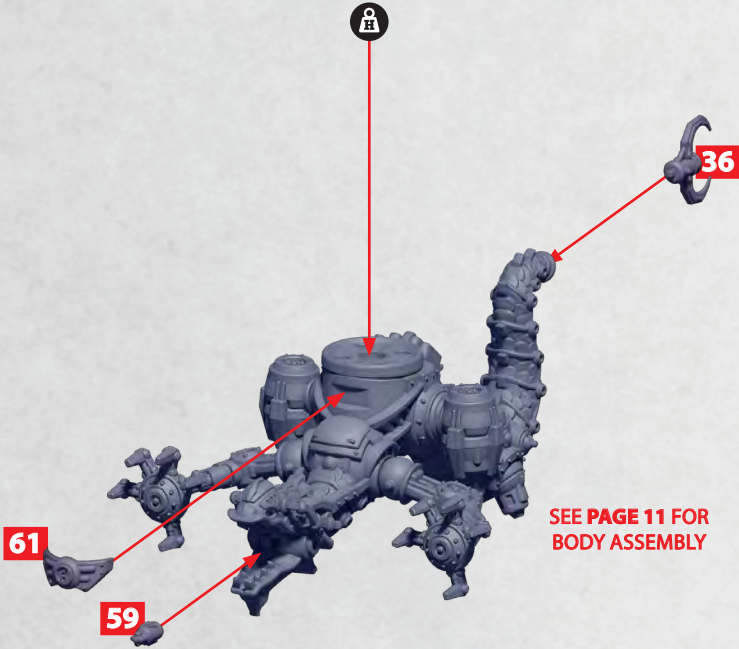
SHENLONG DRACONIC COLOSSUS

PARTS CAN BE FOUND ON THE **KOREAN AERIAL SQUADRON** SPRUE



SHENLONG DRACONIC COLOSSUS

PARTS CAN BE FOUND ON THE **KOREAN AERIAL SQUADRON** SPRUE AND
ENLIGHTENED/EMPIRE ADD-ON SPRUE (SOME HARDPOINT (🔒/👤) OPTIONS)

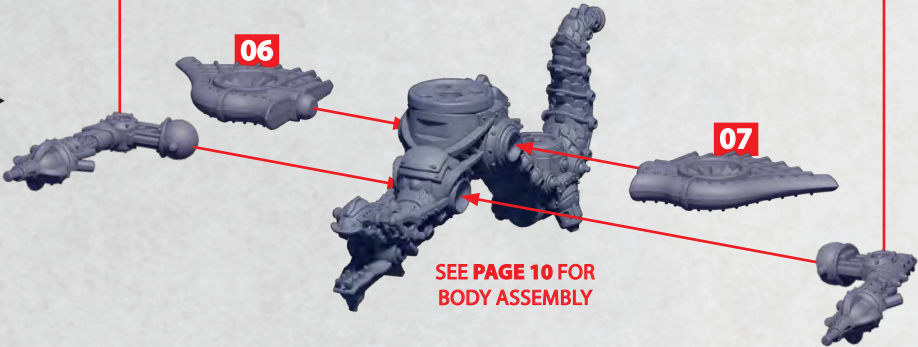
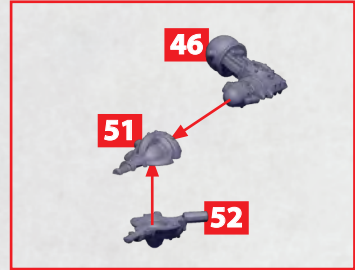
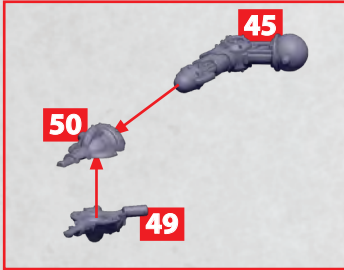


SEE PAGE 11 FOR
BODY ASSEMBLY



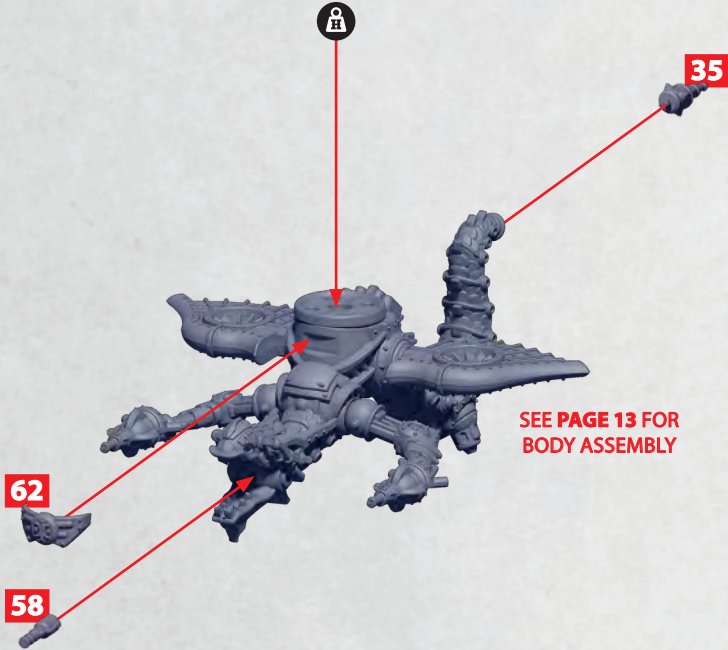
GANGCHEORI DRACONIC COLOSSUS

PARTS CAN BE FOUND ON THE **KOREAN AERIAL SQUADRON** SPRUE



GANGCHEORI DRACONIC COLOSSUS

PARTS CAN BE FOUND ON THE **KOREAN AERIAL SQUADRON** SPRUE AND
ENLIGHTENED/EMPIRE ADD-ON SPRUE (SOME HARDPOINT (🔒/🔑) OPTIONS)

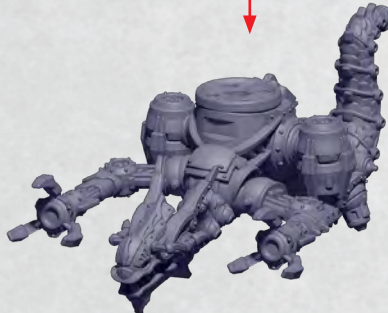
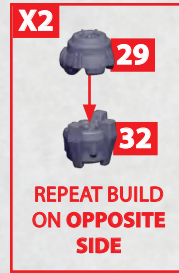
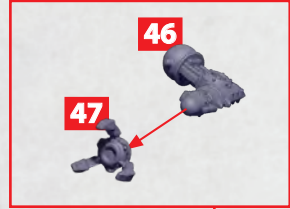
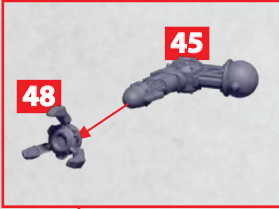


SEE PAGE 13 FOR
BODY ASSEMBLY



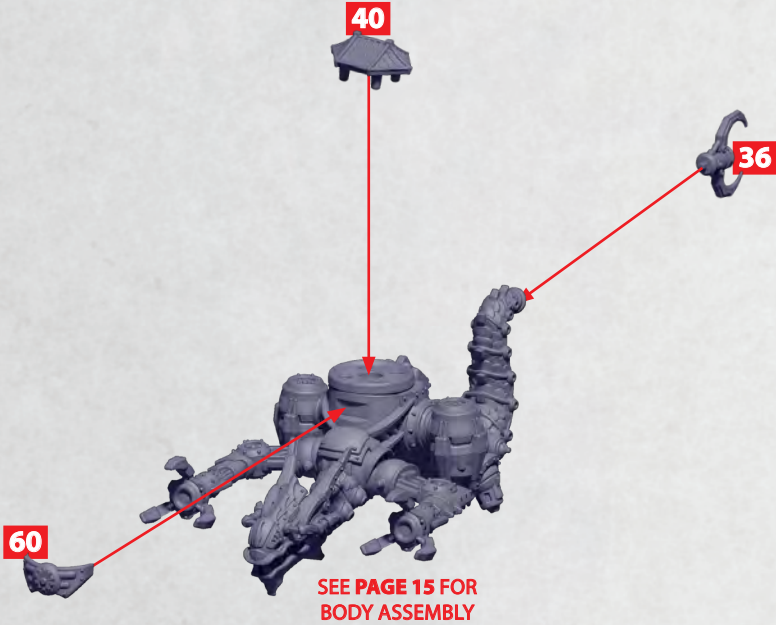
KIYOHIME DRACONIC COLOSSUS

PARTS CAN BE FOUND ON THE **KOREAN AERIAL SQUADRON** SPRUE



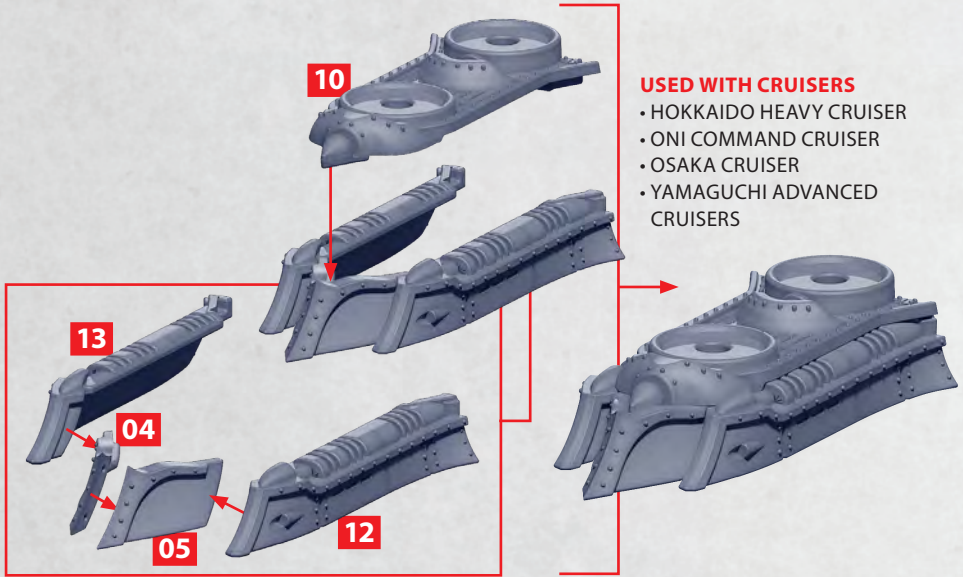
KIYOHIME DRACONIC COLOSSUS

PARTS CAN BE FOUND ON THE **KOREAN AERIAL SQUADRON** SPRUE



CRUISER PROW - DOUBLE TURRET

PARTS CAN BE FOUND ON THE **JAPANESE FRONTLINE SQUADRONS** SPRUE

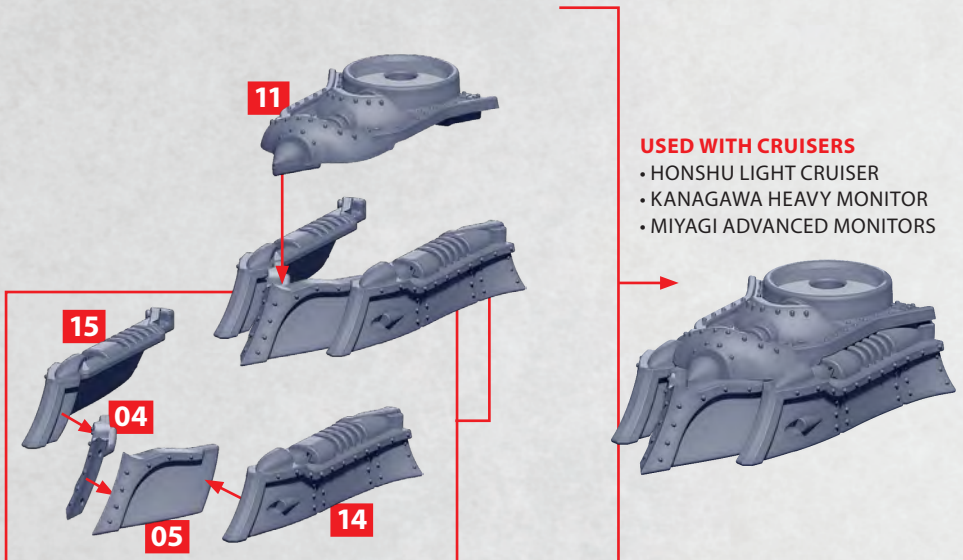


USED WITH CRUISERS

- HOKKAIDO HEAVY CRUISER
- ONI COMMAND CRUISER
- OSAKA CRUISER
- YAMAGUCHI ADVANCED CRUISERS

CRUISER/MONITOR PROW - SINGLE TURRET

PARTS CAN BE FOUND ON THE **JAPANESE FRONTLINE SQUADRONS** SPRUE

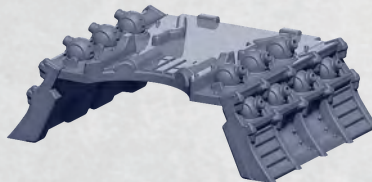
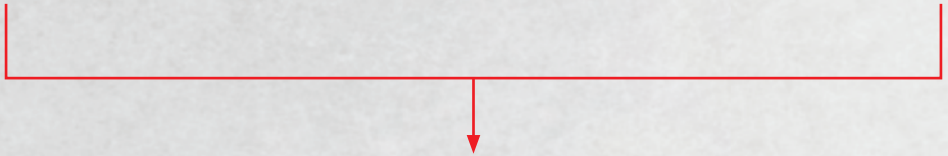


USED WITH CRUISERS

- HONSHU LIGHT CRUISER
- KANAGAWA HEAVY MONITOR
- MIYAGI ADVANCED MONITORS

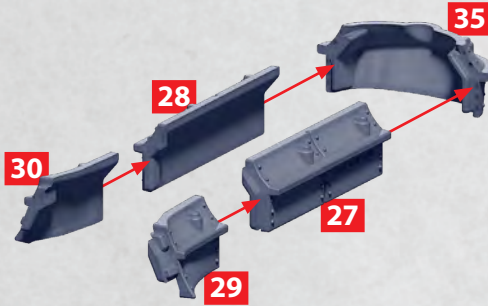
CRUISER/MONITOR MID SECTION

PARTS CAN BE FOUND ON THE **JAPANESE FRONTLINE SQUADRONS** SPRUE



CRUISER/MONITOR STERN - LONG

PARTS CAN BE FOUND ON THE **JAPANESE FRONTLINE SQUADRONS** SPRUE



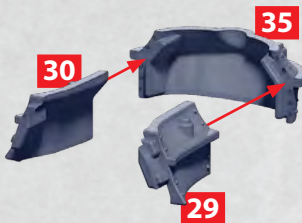
USED WITH

- MIYAGI ADVANCED MONITORS
- ONI COMMAND CRUISER
- YAMAGUCHI ADVANCED CRUISERS



CRUISER/MONITOR STERN - SHORT

PARTS CAN BE FOUND ON THE **JAPANESE FRONTLINE SQUADRONS** SPRUE



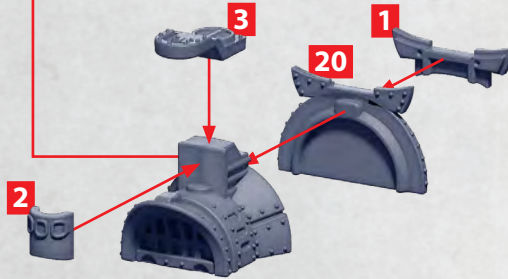
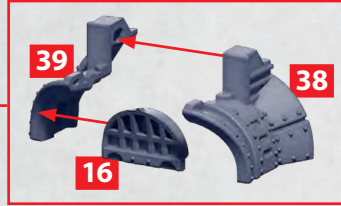
USED WITH

- HOKKAIDO HEAVY CRUISER
- HONSHU LIGHT CRUISER
- KANAGAWA HEAVY MONITOR
- OSAKA CRUISER



CRUISER/MONITOR BRIDGE PART 1

PARTS CAN BE FOUND ON THE JAPANESE FRONTLINE SQUADRONS SPRUE

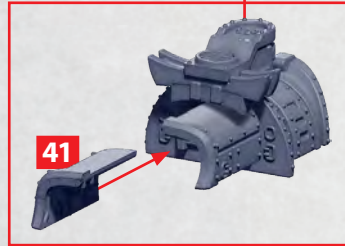


CRUISER/MONITOR BRIDGE - PART 2A

PARTS CAN BE FOUND ON THE **JAPANESE FRONTLINE SQUADRONS** SPRUE



NOTE: ATTACH
ONE OF EITHER
PARTS 40 OR 41
TO THE BRIDGE
SECTION BEFORE
FITTING THE
OPPOSITE PART



ROTATED
180°

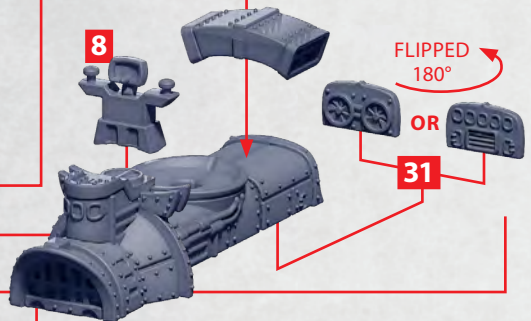
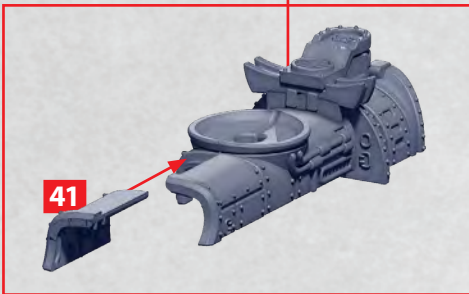
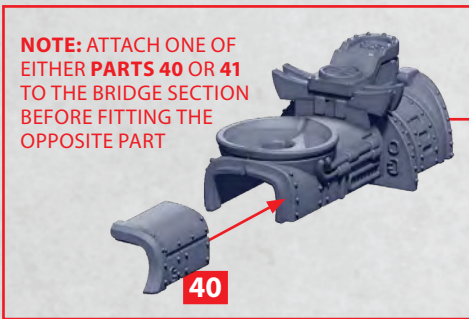
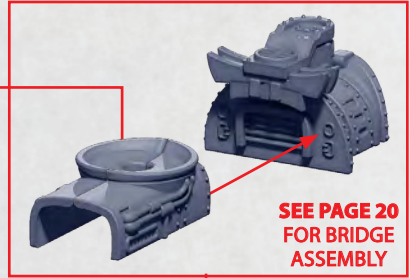
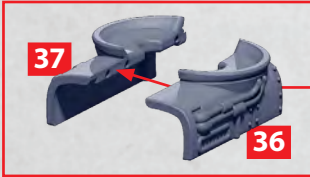


USED WITH CRUISERS

- HOKKAIDO
- HONSHU
- KANAGAWA
- MIYAGI
- OSAKA
- YAMAGUCHI

COMMAND BRIDGE - PART 2B

PARTS CAN BE FOUND ON THE **JAPANESE FRONTLINE SQUADRONS** SPRUE



ROTATED
180°



USED WITH CRUISERS

• ONI

CRUISER/MONITOR REAR DECK OPTIONS

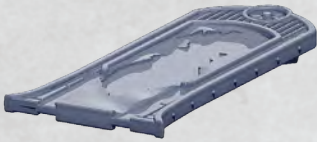
PARTS CAN BE FOUND ON THE **JAPANESE FRONTLINE SQUADRONS** SPRUE

NOTE

PARTS WITH THE SAME NUMBER THAT APPEAR DIFFERENTLY
ARE FLIPPED TO THEIR REQUIRED SIDE IN REAR DECK BUILDS



FLIPPED
180°



FLIPPED
180°



FLIPPED
180°



SEE PAGE 20
FOR BRIDGE
ASSEMBLY

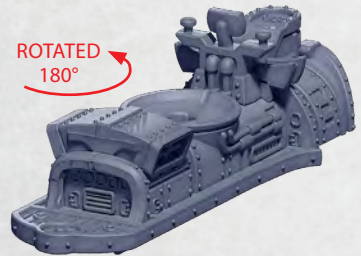
USED WITH
• ONI COMMAND CRUISER



BE SURE TO
SELECT THE
CORRECT SIDE



ROTATED
180°



MONITOR REAR DECK OPTIONS

PARTS CAN BE FOUND ON THE **JAPANESE FRONTLINE SQUADRONS** SPRUE

USED WITH

- MIYAGI ADVANCED
MONITOR (JINHAE)



SEE PAGE 21
FOR BRIDGE
ASSEMBLY



24 BE SURE TO
SELECT THE
CORRECT SIDE



ROTATED
180°

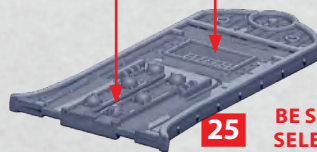


USED WITH

- MIYAGI ADVANCED
MONITOR (OKINAWA)



SEE PAGE 21
FOR BRIDGE
ASSEMBLY



25 BE SURE TO
SELECT THE
CORRECT SIDE



ROTATED
180°



CRUISER REAR DECK OPTIONS

PARTS CAN BE FOUND ON THE **JAPANESE FRONTLINE SQUADRONS** SPRUE

USED WITH

- YAMAGUCHI ADVANCED CRUISER (MIZUCHI)



SEE PAGE 21
FOR BRIDGE
ASSEMBLY



25 BE SURE TO
SELECT THE
CORRECT SIDE



ROTATED
180°



USED WITH

- YAMAGUCHI ADVANCED CRUISER (ISHIKAWA)



SEE PAGE 21
FOR BRIDGE
ASSEMBLY



6



24 BE SURE TO
SELECT THE
CORRECT SIDE



ROTATED
180°



CRUISER/MONITOR REAR DECK OPTIONS

PARTS CAN BE FOUND ON THE **JAPANESE FRONTLINE SQUADRONS** SPRUE AND **ENLIGHTENED/EMPIRE ADD-ON** SPRUE (SOME HARDPOINT (🔒/🛡️) OPTIONS)



SEE PAGE 21 FOR BRIDGE ASSEMBLY



26



USED WITH

- HONSHU LIGHT CRUISER
- HOKKAIDO HEAVY CRUISER

BE SURE TO SELECT THE CORRECT SIDE



ROTATED 180°



SEE PAGE 21 FOR BRIDGE ASSEMBLY

USED WITH

- KANAGAWA HEAVY MONITOR
- OSAKA CRUISER



9

31

26



BE SURE TO SELECT THE CORRECT SIDE



ROTATED 180°

ONI COMMAND CRUISER

PARTS CAN BE FOUND ON THE **JAPANESE FRONTLINE SQUADRONS** SPRUE AND
ENLIGHTENED/EMPIRE ADD-ON SPRUE (SOME HARDPOINT (H) / (H)) OPTIONS)

62

SEE PAGE 22
FOR REAR DECK
ASSEMBLY

SEE PAGE 19
FOR STERN
ASSEMBLY

42

SEE PAGE 18
FOR MID SECTION
ASSEMBLY

SEE PAGE 17
FOR PROW
ASSEMBLY

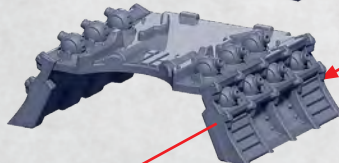
MIYAGI ADVANCED MONITOR (JINHAE)

PARTS CAN BE FOUND ON THE **JAPANESE FRONTLINE SQUADRONS** SPRUE AND
ENLIGHTENED/EMPIRE ADD-ON SPRUE (SOME HARDPOINT (🔒/🛡️) OPTIONS)

SEE PAGE 23
FOR REAR DECK
ASSEMBLY



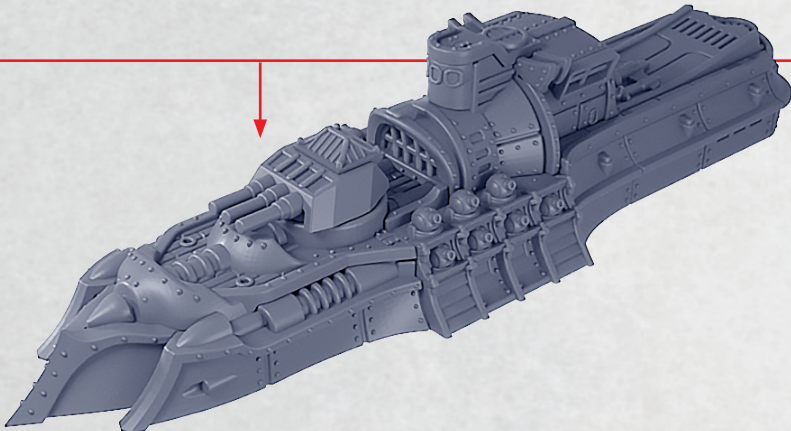
SEE PAGE 19
FOR STERN
ASSEMBLY



SEE PAGE 18 FOR
MID SECTION
ASSEMBLY



SEE PAGE 17
FOR PROW
ASSEMBLY



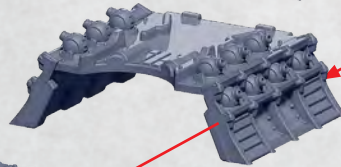
MIYAGI ADVANCED MONITOR (OKINAWA)

PARTS CAN BE FOUND ON THE **JAPANESE FRONTLINE SQUADRONS** SPRUE AND
ENLIGHTENED/EMPIRE ADD-ON SPRUE (SOME HARDPOINT (H) / (I) OPTIONS)

SEE PAGE 23
FOR REAR DECK
ASSEMBLY



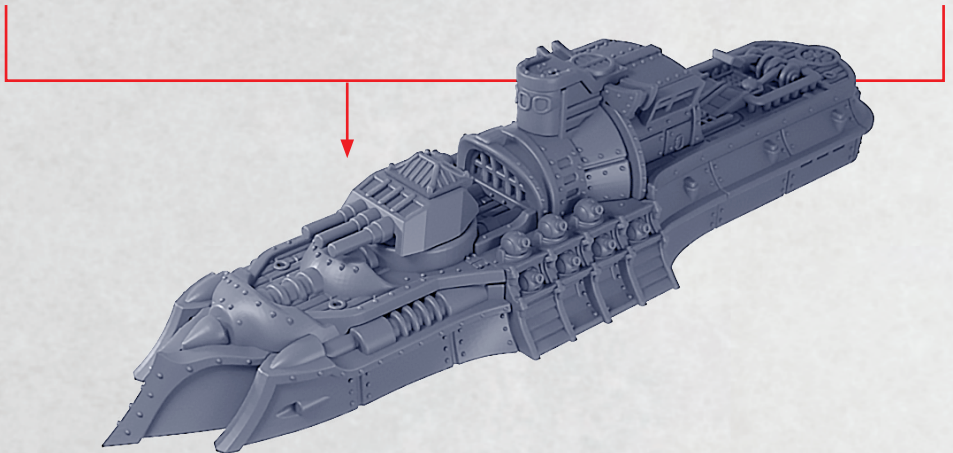
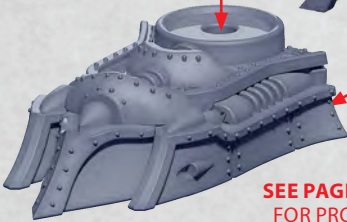
SEE PAGE 19
FOR STERN
ASSEMBLY



SEE PAGE 18
FOR MID SECTION
ASSEMBLY



SEE PAGE 17
FOR PROW
ASSEMBLY



YAMAGUCHI ADVANCED CRUISER (MIZUCHI)

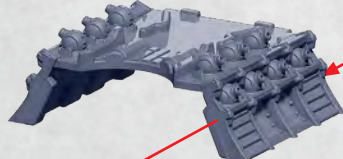
PARTS CAN BE FOUND ON THE **JAPANESE FRONTLINE SQUADRONS** SPRUE AND
ENLIGHTENED/EMPIRE ADD-ON SPRUE (SOME HARDPOINT (🔒/🔑) OPTIONS)

SEE PAGE 23
FOR REAR DECK
ASSEMBLY

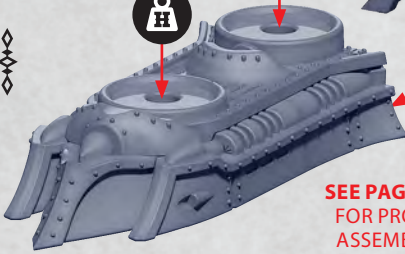


SEE PAGE 19
FOR STERN
ASSEMBLY

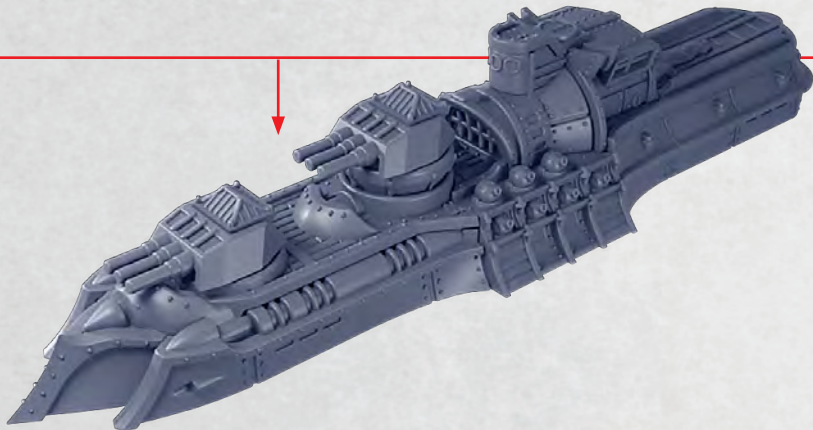
42



SEE PAGE 18
FOR MID SECTION
ASSEMBLY



SEE PAGE 17
FOR PROW
ASSEMBLY



YAMAGUCHI ADVANCED CRUISER (ISHIKAWA)

PARTS CAN BE FOUND ON THE **JAPANESE FRONTLINE SQUADRONS** SPRUE AND
ENLIGHTENED/EMPIRE ADD-ON SPRUE (SOME HARDPOINT (H) / (E) OPTIONS)

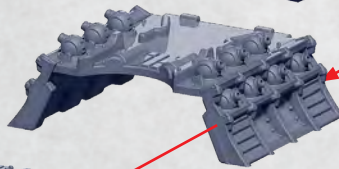
SEE PAGE 23
FOR REAR DECK
ASSEMBLY



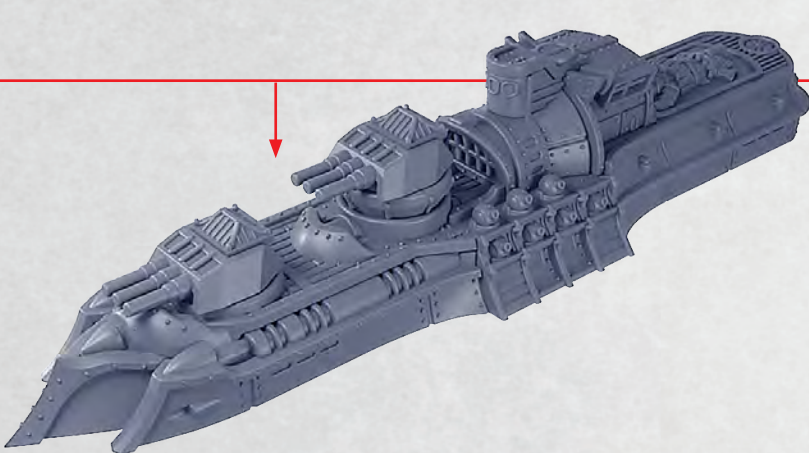
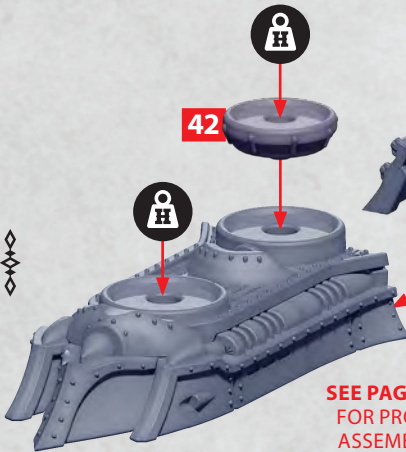
SEE PAGE 19
FOR STERN
ASSEMBLY



SEE PAGE 18
FOR MID SECTION
ASSEMBLY



SEE PAGE 17
FOR PROW
ASSEMBLY



HONSHU LIGHT CRUISER

PARTS CAN BE FOUND ON THE **JAPANESE FRONTLINE SQUADRONS** SPRUE AND
ENLIGHTENED/EMPIRE ADD-ON SPRUE (SOME HARDPOINT   OPTIONS)

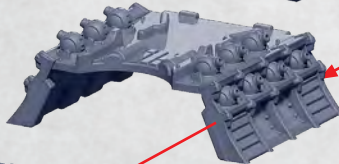
SEE PAGE 25
FOR REAR DECK
ASSEMBLY



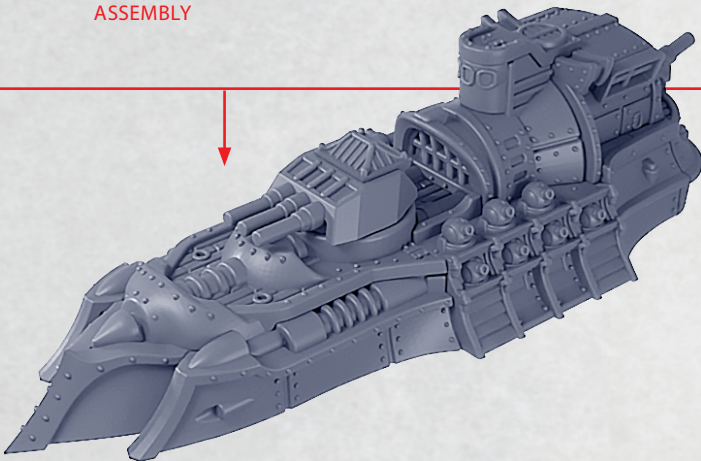
SEE PAGE 19
FOR STERN
ASSEMBLY



SEE PAGE 18
FOR MID SECTION
ASSEMBLY



SEE PAGE 17
FOR PROW
ASSEMBLY



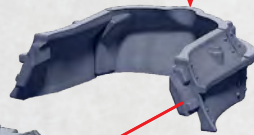
HOKKAIDO HEAVY CRUISER

PARTS CAN BE FOUND ON THE **JAPANESE FRONTLINE SQUADRONS** SPRUE AND
ENLIGHTENED/EMPIRE ADD-ON SPRUE (SOME HARDPOINT (H) / (I) OPTIONS)

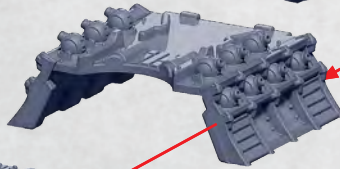
SEE PAGE 23
FOR REAR DECK
ASSEMBLY



42

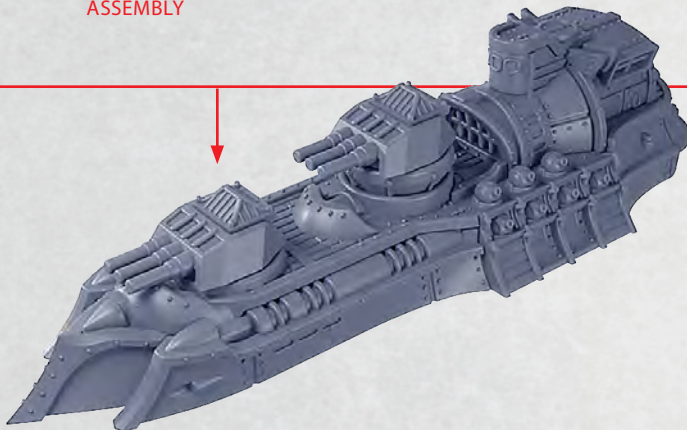
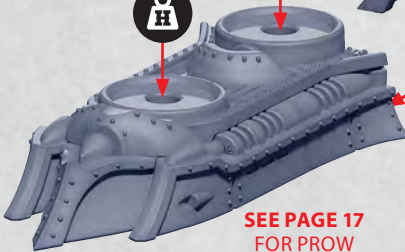


SEE PAGE 19
FOR STERN
ASSEMBLY



SEE PAGE 18
FOR MID SECTION
ASSEMBLY

SEE PAGE 17
FOR PROW
ASSEMBLY



KANAGAWA HEAVY MONITOR

PARTS CAN BE FOUND ON THE **JAPANESE FRONTLINE SQUADRONS** SPRUE AND
ENLIGHTENED/EMPIRE ADD-ON SPRUE (SOME HARDPOINT   OPTIONS)

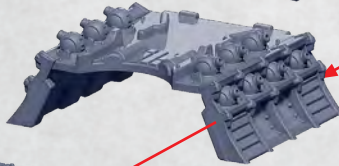
SEE PAGE 23
FOR REAR DECK
ASSEMBLY



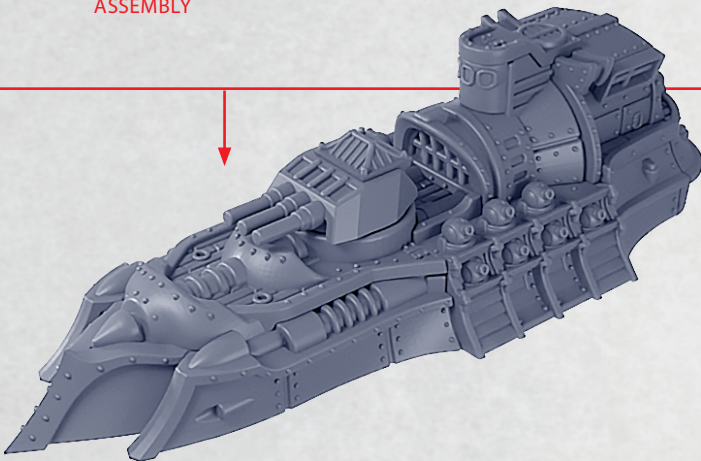
SEE PAGE 19
FOR STERN
ASSEMBLY



SEE PAGE 18
FOR MID SECTION
ASSEMBLY



SEE PAGE 17
FOR PROW
ASSEMBLY



OSAKA CRUISER

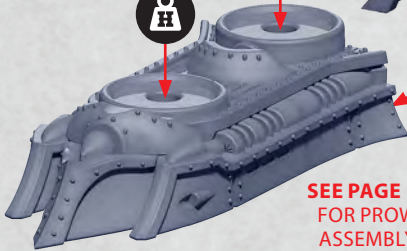
PARTS CAN BE FOUND ON THE **JAPANESE FRONTLINE SQUADRONS** SPRUE AND
ENLIGHTENED/EMPIRE ADD-ON SPRUE (SOME HARDPOINT   OPTIONS)

SEE PAGE 23
FOR REAR DECK
ASSEMBLY



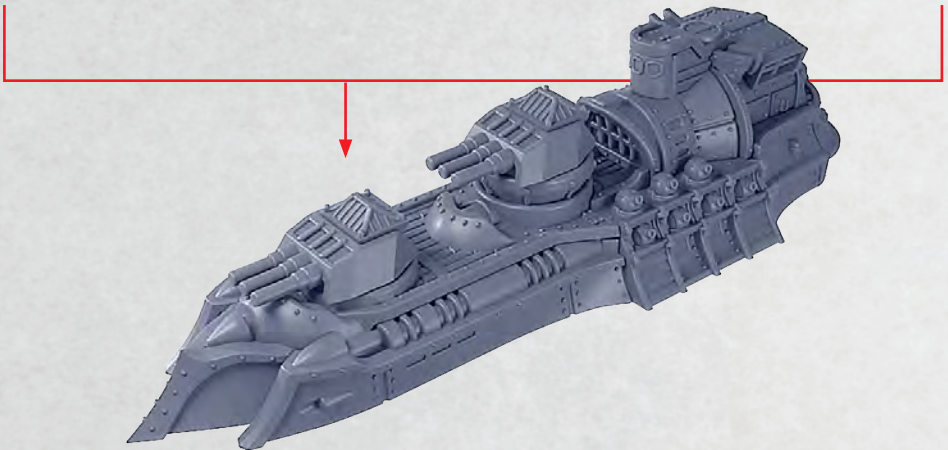
SEE PAGE 19
FOR STERN
ASSEMBLY

42



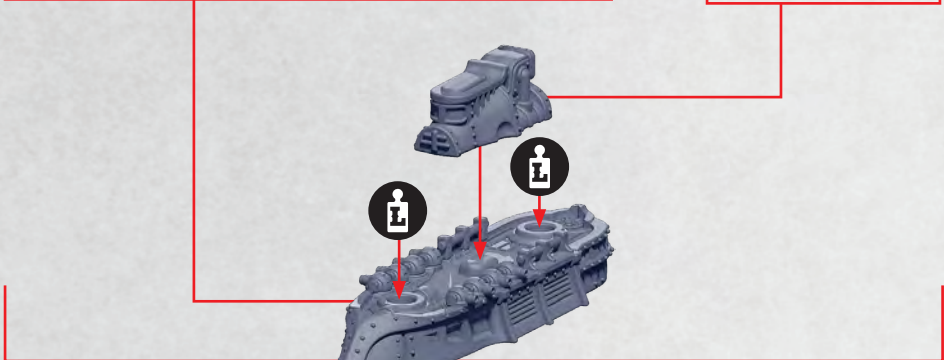
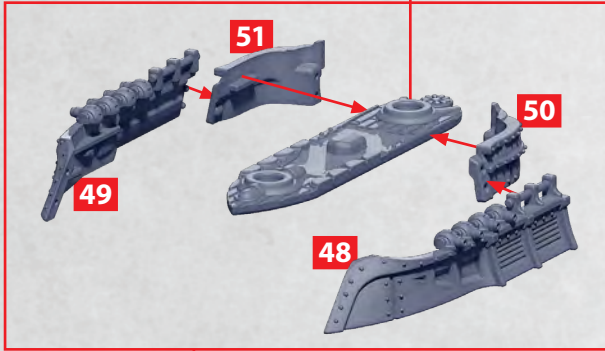
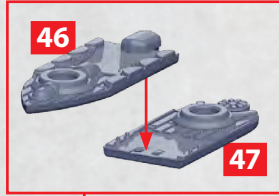
SEE PAGE 18
FOR MID SECTION
ASSEMBLY

SEE PAGE 17
FOR PROW
ASSEMBLY



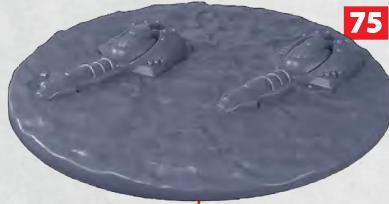
SAKATA HEAVY DESTROYER

PARTS CAN BE FOUND ON THE **JAPANESE FRONTLINE SQUADRONS** SPRUE AND
ENLIGHTENED/EMPIRE ADD-ON SPRUE (SOME HARDPOINT (🔒/🛡️) OPTIONS)



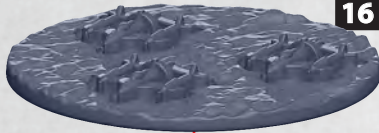
RIN EXO-SUB TOKENS

PARTS CAN BE FOUND ON THE **JAPANESE FRONTLINE SQUADRONS** SPRUE
AND **ENLIGHTENED/EMPIRE** ADD-ON SPRUE (BLACK NUMBERS)



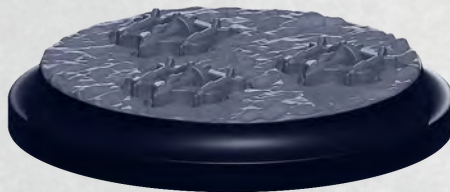
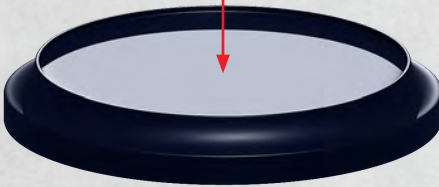
DEFIANCE FIGHTERS SRS TOKEN

PARTS CAN BE FOUND ON THE **JAPANESE FRONTLINE SQUADRONS** SPRUE
AND **ENLIGHTENED/EMPIRE** ADD-ON SPRUE (BLACK NUMBERS)



15

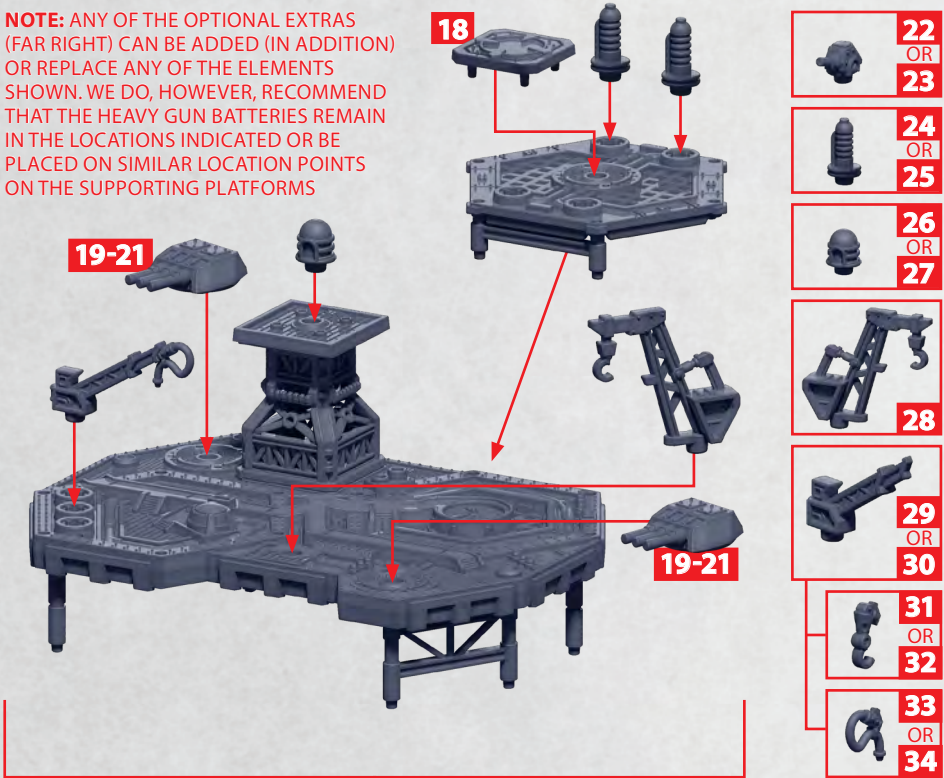
THIS COMPONENT
IS ONLY USED IN
ENLIGHTENED FORCES.



OFFSHORE SUPPLY PLATFORM

PARTS CAN BE FOUND ON THE DYSTOPIAN WARS OBJECTIVE SET SPRUE

NOTE: ANY OF THE OPTIONAL EXTRAS (FAR RIGHT) CAN BE ADDED (IN ADDITION) OR REPLACE ANY OF THE ELEMENTS SHOWN. WE DO, HOWEVER, RECOMMEND THAT THE HEAVY GUN BATTERIES REMAIN IN THE LOCATIONS INDICATED OR BE PLACED ON SIMILAR LOCATION POINTS ON THE SUPPORTING PLATFORMS



FINISHED EXAMPLE OF WAR PLATFORM

EXAMPLE SUPPORT PLATFORM



OLYMPIA CONVEYOR LOWER BOW, HULL & STERN

PARTS CAN BE FOUND ON THE TITAN CLASS HEAVY CONVEYOR SPRUE

!! IMPORTANT !!
PICK REQUIRED BUILD (TITAN OR OLYMPIA CLASS) BEFORE ANY ASSEMBLY

NOTE: ON DOUBLE BODY VESSELS, ONE SECTION WILL NOT REQUIRE (RED) PART 2-4 AT THE FRONT OR BACK, DEPENDING WHERE YOU PLACE THE SECTION

COMPLETED SINGLE BODY VESSEL HULL – CONSIDER THE POSITION OF FLIGHT STAND BEFORE ANY ASSEMBLY

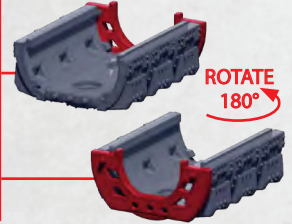


PARTS 40 WILL ONLY REQUIRE PART 42-43 IN ONE SECTION WHEN ASSEMBLING THE DOUBLE BODY VESSEL (NOT REQUIRED ON SINGLE HULL VERSION) – CONSIDER THE POSITION OF FLIGHT STAND BEFORE ANY ASSEMBLY

* HOLE FOR FLIGHT STAND

42-43

THE EXTRA SECTION FOR THE DOUBLE BODY VESSEL CAN BE ROTATED TO FIT EITHER THE FRONT OR BACK OF THE SINGLE SECTION (FAR LEFT) – CONSIDER THE POSITION OF FLIGHT STAND BEFORE ANY ASSEMBLY

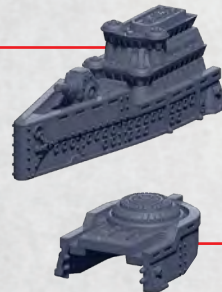
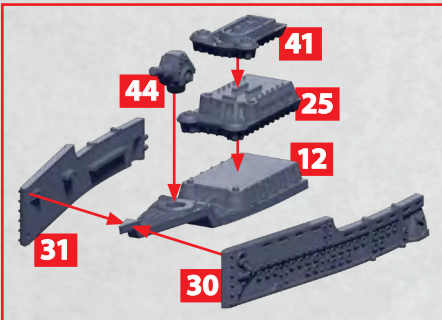


ROTATE 180°



TITAN & OLYMPIA CONVEYOR UPPER BOW & STERN

PARTS CAN BE FOUND ON THE TITAN CLASS HEAVY CONVEYOR SPRUES



TITAN AND OLYMPIA CONVEYOR CARGO

PARTS CAN BE FOUND ON THE **TITAN CLASS HEAVY CONVEYOR SPRUE**

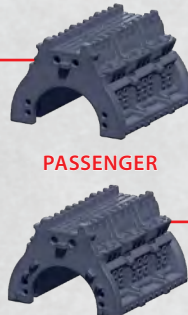
SINGLE BODY VESSEL (OR FRONT OF DOUBLE BODY VESSEL)

NOTE: THE SINGLE BODY VESSEL ONLY REQUIRES PART 7 (INDICATED RED) – IF PART OF THE DOUBLE BODY VESSEL THEN PART 7 IS OMITTED HERE



DOUBLE BODY VESSEL ONLY (REAR SECTION)

NOTE: WHEN CONSTRUCTING A DOUBLE BODY VESSEL THEN PART 7 (INDICATED RED) MOVES TO THE REAR OF THIS SECTION – SEE NOTE LEFT



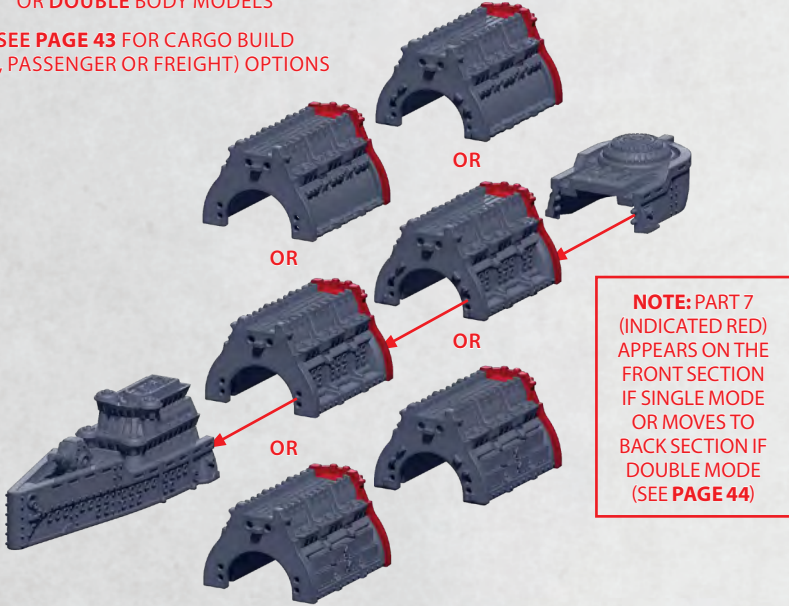
*REPEAT ATTACHMENT OF PARTS 49-52 ON OPPOSITE SIDE OF MODEL

TITAN AND OLYMPIA CONVEYOR UPPER ASSEMBLY

PARTS CAN BE FOUND ON THE **TITAN CLASS HEAVY CONVEYOR SPRUE**

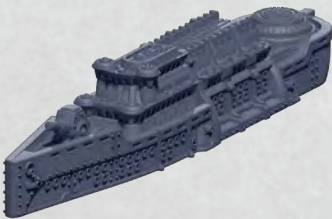
CAN BE BUILT AS EITHER **SINGLE**
OR **DOUBLE** BODY MODELS

SEE **PAGE 43** FOR CARGO BUILD
(OIL, PASSENGER OR FREIGHT) OPTIONS

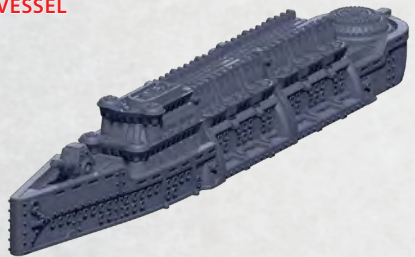


BOTH EXAMPLES BELOW SHOWN WITH **PASSENGER** CARGO SECTIONS

SINGLE BODY
VESSEL



DOUBLE BODY
VESSEL



OLYMPIA CONVEYOR LOWER ASSEMBLY

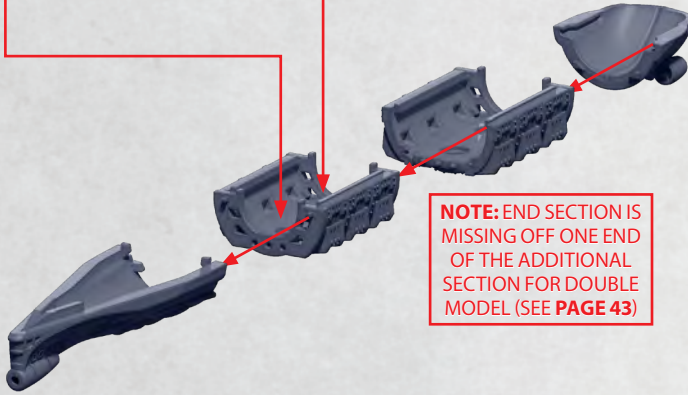
PARTS CAN BE FOUND ON THE **TITAN CLASS HEAVY CONVEYOR** SPRUE

RECOMMENDED
POSITION OF FLIGHT
STAND FOR **SINGLE
HULL VESSEL** IS
THE FRONT OF THE
SECTION TOWARD
THE BOW

RECOMMENDED
POSITION OF FLIGHT
STAND FOR **DOUBLE
HULL VESSEL** IS
THE REAR OF THE
FRONT
HULL SECTION
TOWARD THE CENTRE

CAN BE BUILT AS EITHER **SINGLE**
OR **DOUBLE** BODY MODELS

SEE **PAGE 43** FOR ASSEMBLY
OF EACH SECTION



NOTE: END SECTION IS
MISSING OFF ONE END
OF THE ADDITIONAL
SECTION FOR DOUBLE
MODEL (SEE **PAGE 43**)

**SINGLE BODY
VESSEL**



**DOUBLE BODY
VESSEL**



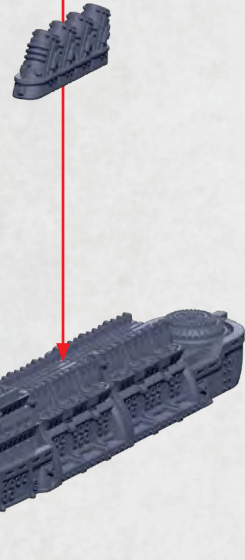
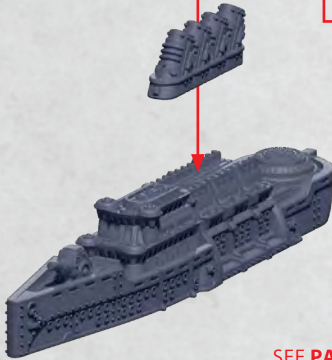
TITAN CONVEYOR PASSENGER

PARTS CAN BE FOUND ON THE **TITAN CLASS HEAVY CONVEYOR SPRUE**

FUNNELS

36

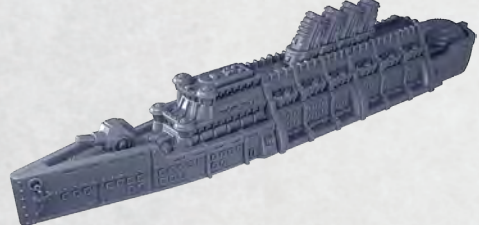
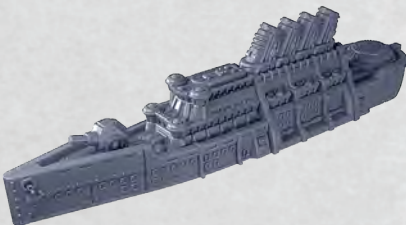
35



SEE **PAGES 43-46**
FOR ASSEMBLY

**SINGLE BODY
VESSEL**

**DOUBLE BODY
VESSEL**

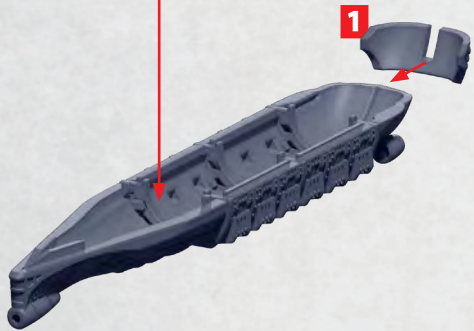
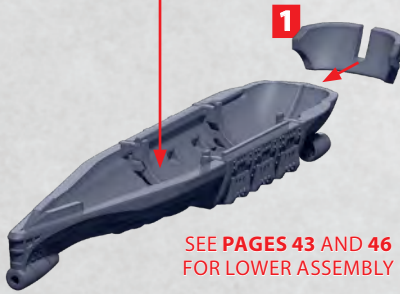
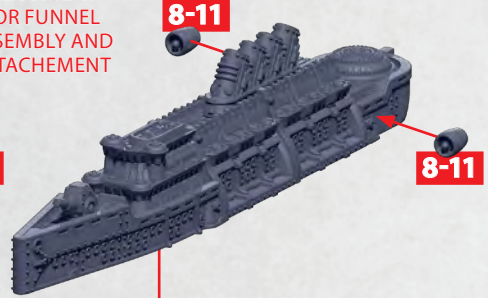


OLYMPIA CONVEYOR PASSENGER

PARTS CAN BE FOUND ON THE **TITAN CLASS HEAVY CONVEYOR SPRUE**



SEE PAGE 47
FOR FUNNEL
ASSEMBLY AND
ATTACHEMENT



SINGLE BODY
VESSEL



DOUBLE BODY
VESSEL



TITAN CONVEYOR OIL

PARTS CAN BE FOUND ON THE **TITAN CLASS HEAVY CONVEYOR SPRUE**

CRANE

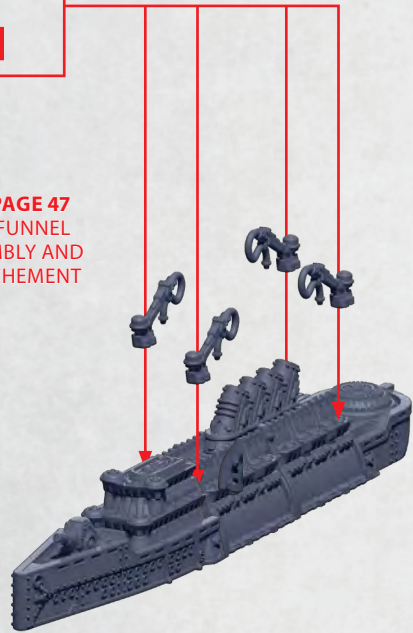
60-61 OR 70

62-63 OR 66



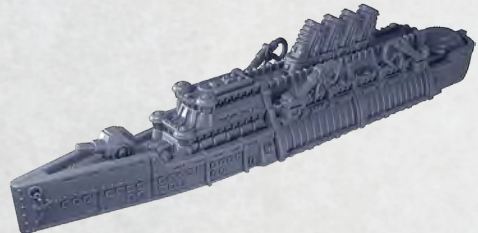
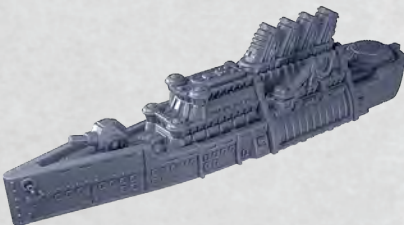
SEE PAGE 47
FOR FUNNEL
ASSEMBLY AND
ATTACHMENT

SEE PAGES 43-45
FOR ASSEMBLY



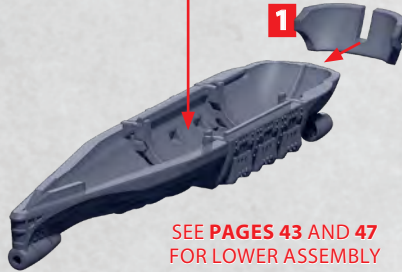
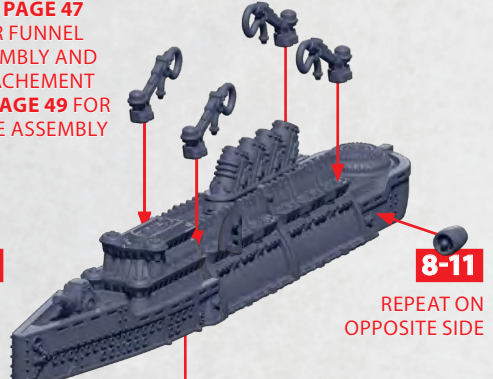
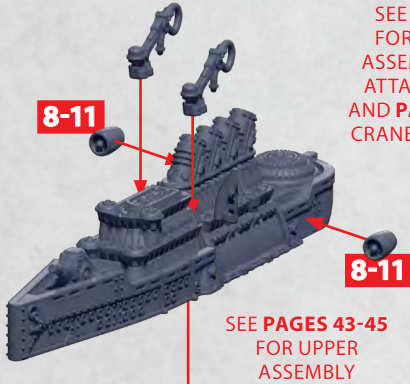
SINGLE BODY
VESSEL

DOUBLE BODY
VESSEL

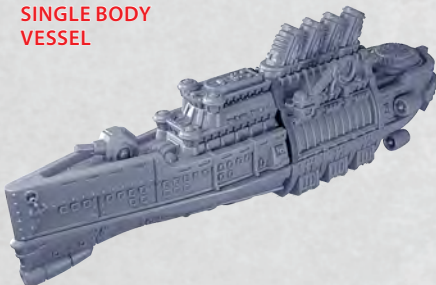


OLYMPIA CONVEYOR OIL

PARTS CAN BE FOUND ON THE **TITAN CLASS HEAVY CONVEYOR SPRUE**



**SINGLE BODY
VESSEL**

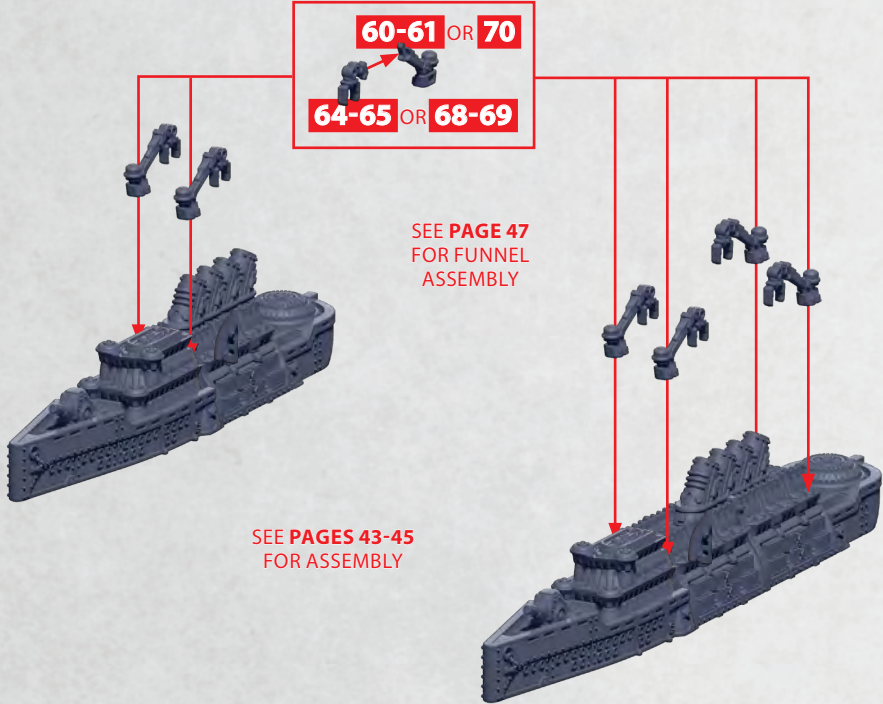


**DOUBLE BODY
VESSEL**



TITAN CONVEYOR FREIGHT

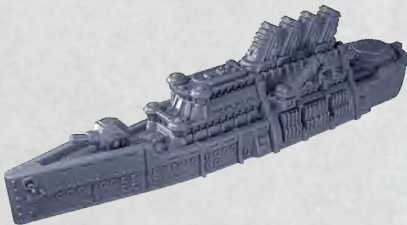
PARTS CAN BE FOUND ON THE **TITAN CLASS HEAVY CONVEYOR SPRUE**



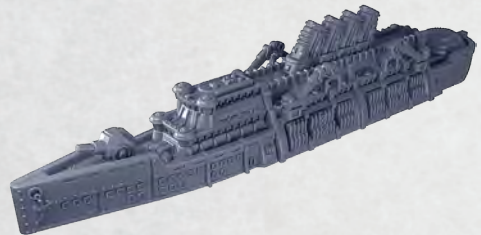
SEE PAGES 43-45
FOR ASSEMBLY

SEE PAGE 47
FOR FUNNEL
ASSEMBLY

**SINGLE BODY
VESSEL**



**DOUBLE BODY
VESSEL**



OLYMPIA CONVEYOR FREIGHT

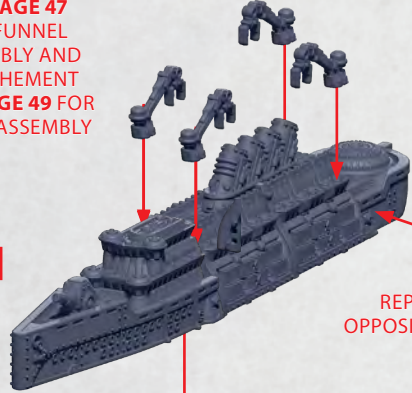
PARTS CAN BE FOUND ON THE **TITAN CLASS HEAVY CONVEYOR SPRUE**

8-11



SEE PAGE 47
FOR FUNNEL
ASSEMBLY AND
ATTACHEMENT
AND PAGE 49 FOR
CRANE ASSEMBLY

8-11

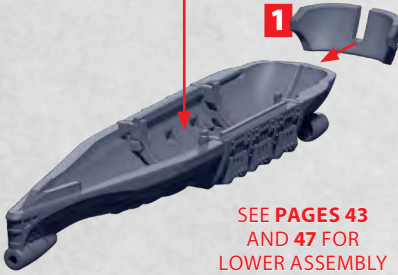


8-11

REPEAT ON
OPPOSITE SIDE

SEE PAGES 43-45
FOR UPPER
ASSEMBLY

1

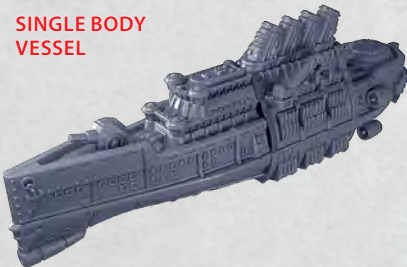


SEE PAGES 43
AND 47 FOR
LOWER ASSEMBLY

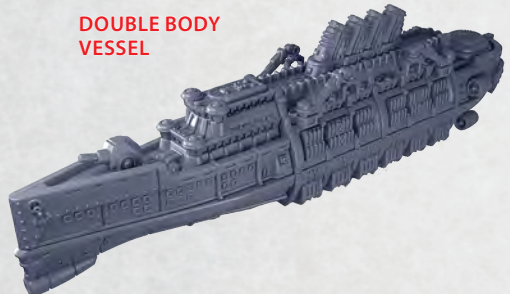
1



SINGLE BODY
VESSEL



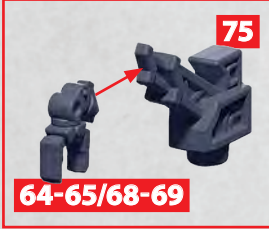
DOUBLE BODY
VESSEL



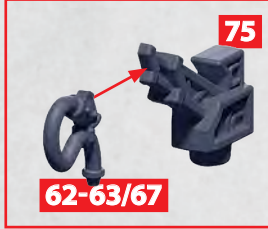
MERCHANT SHIP (HATCH, OIL & FREIGHT)

PARTS CAN BE FOUND ON THE TITAN CLASS HEAVY CONVEYOR SPRUE

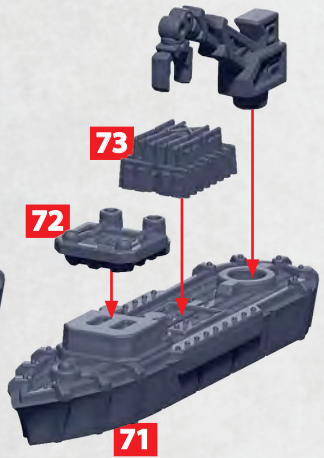
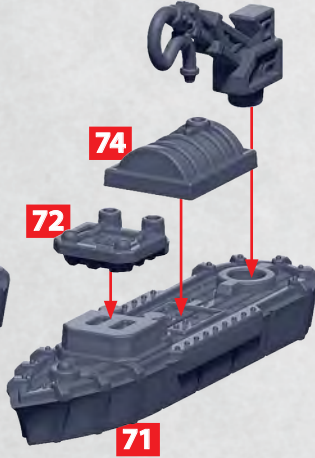
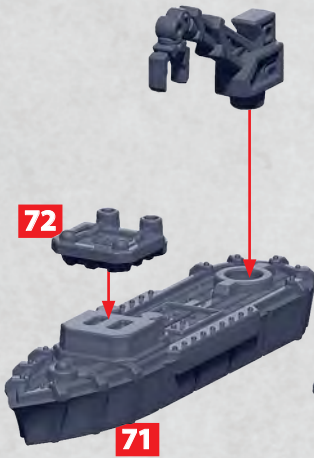
HATCH



OIL



FREIGHT



HATCH



OIL



FREIGHT

