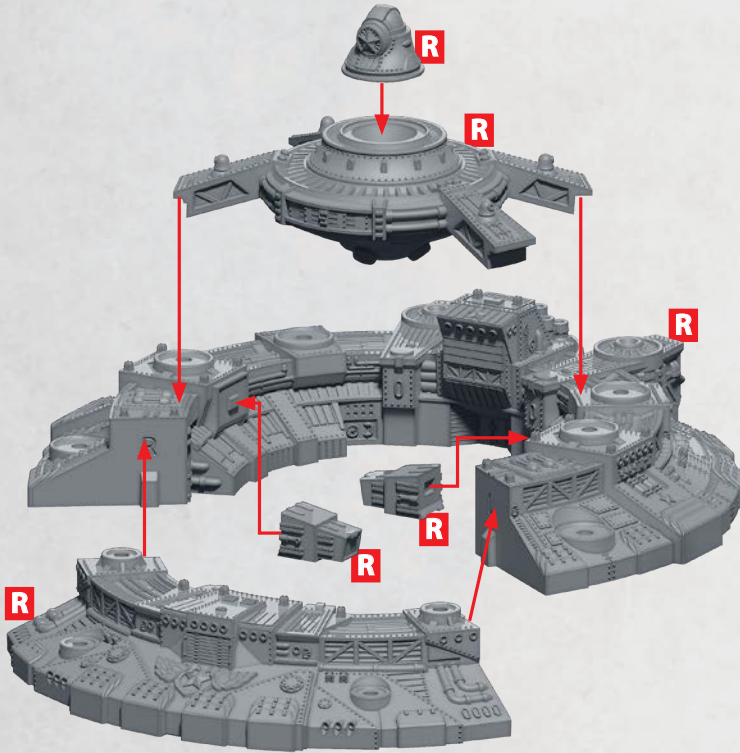


# ANASTASIA MOBILE STRONGHOLD

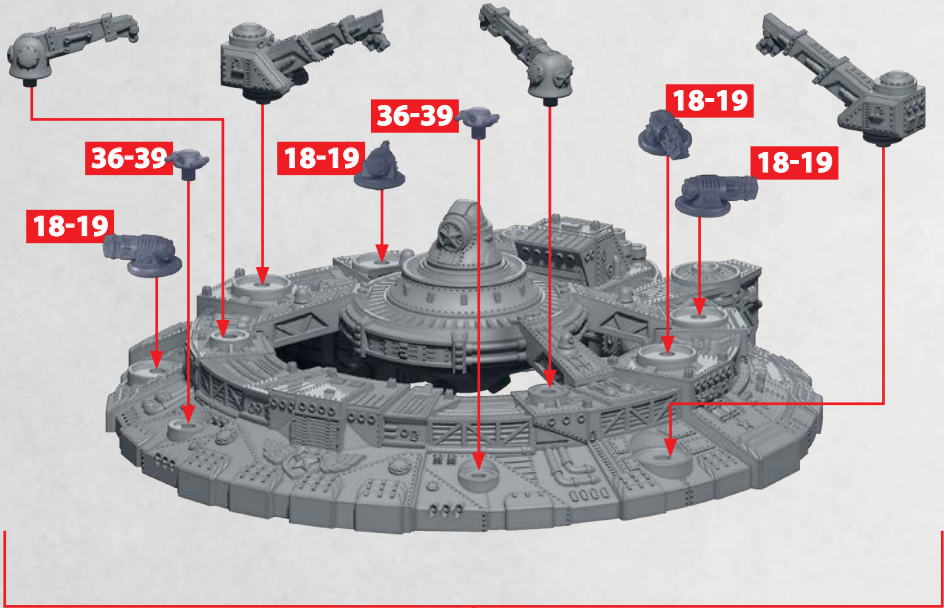
PARTS CAN BE FOUND ON THE COMMONWEALTH SUPPORT SQUADRONS SPRUES



**R** = RESIN

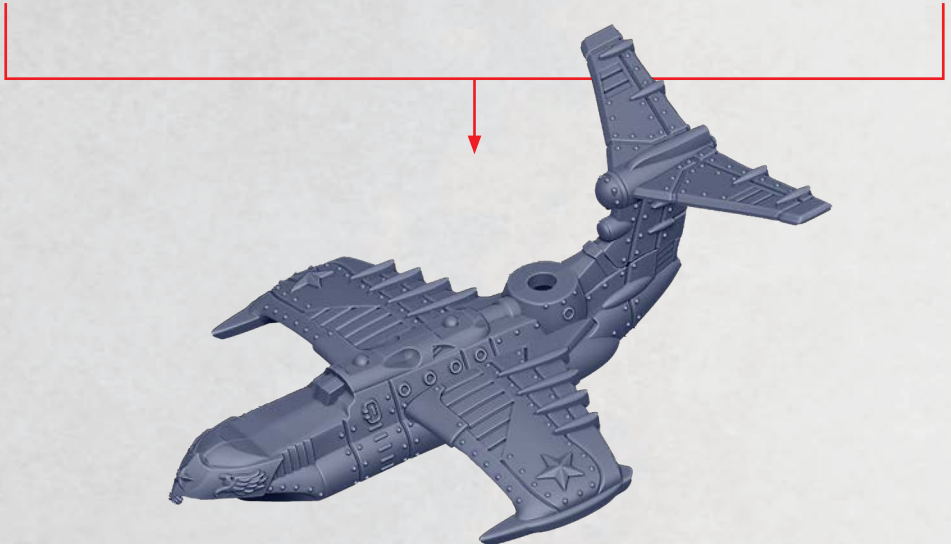
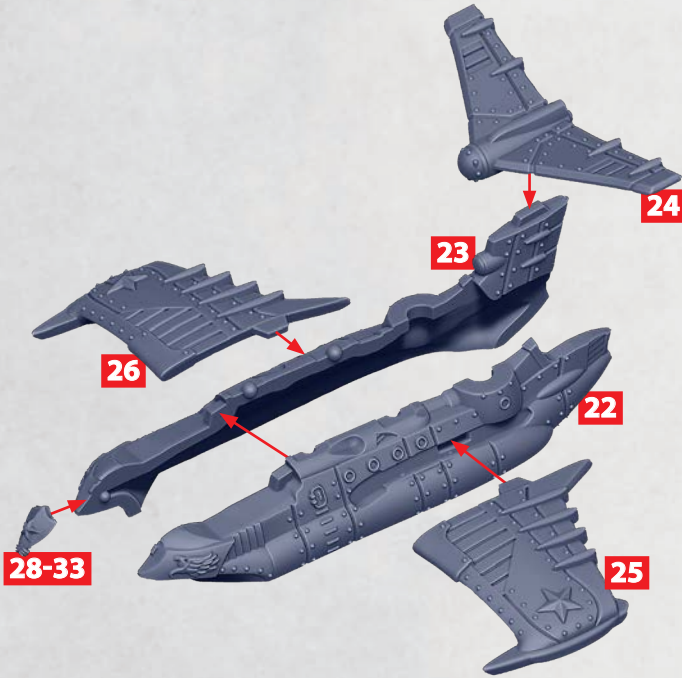
# ANASTASIA MOBILE STRONGHOLD

PARTS CAN BE FOUND ON THE COMMONWEALTH SUPPORT SQUADRONS SPRUES



# STOLETOV EKRAKNOPLAN

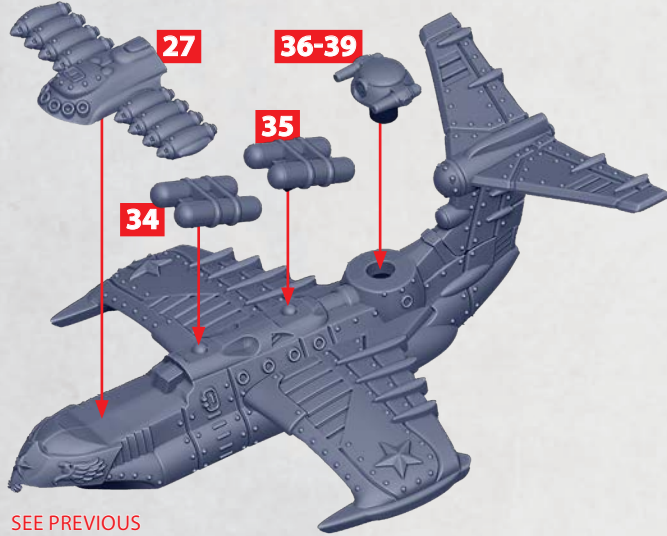
PARTS CAN BE FOUND ON THE COMMONWEALTH SUPPORT SQUADRONS SPRUES



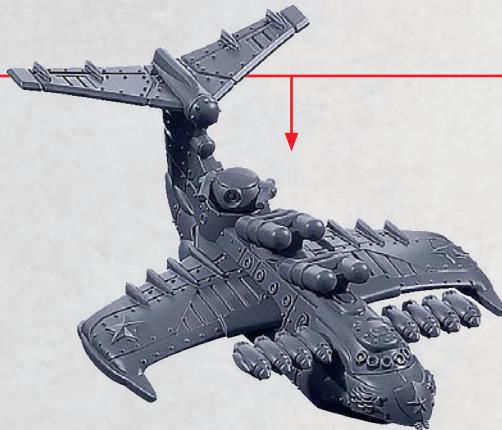


# STOLETOV EKRAANOPLAN

PARTS CAN BE FOUND ON THE COMMONWEALTH SUPPORT SQUADRONS SPRUES

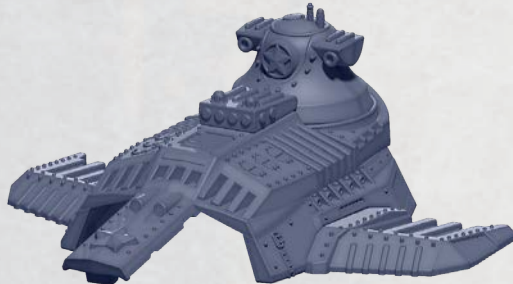
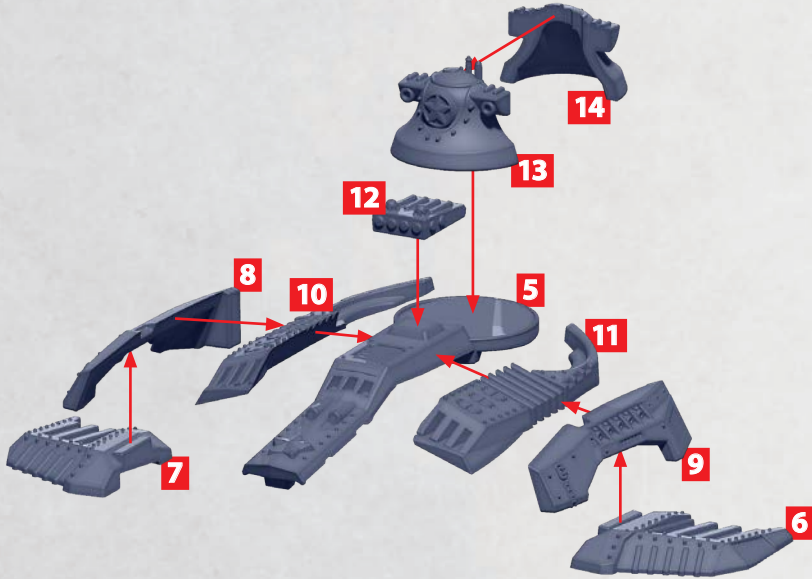


SEE PREVIOUS  
PAGE FOR  
ASSEMBLY



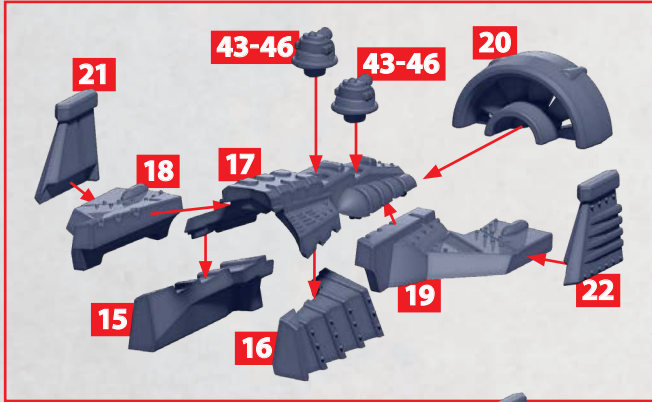
# AKULA AND DEATH BRINGER CLASS GRAND SUBMARINE HULL

PARTS CAN BE FOUND ON THE UKRAINIAN SUBMARINE SQUADRONS SPRUES

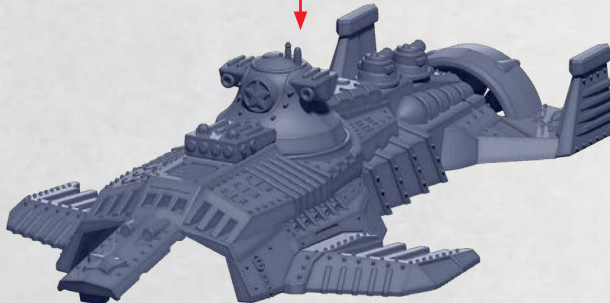
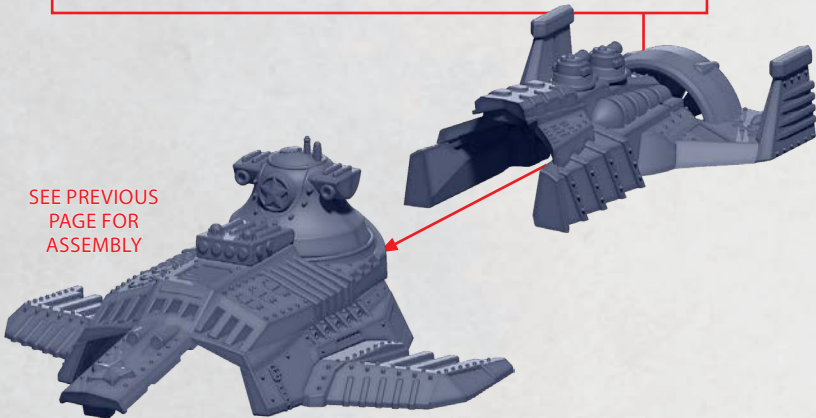


# AKULA AND DEATH BRINGER CLASS GRAND SUBMARINE AFT

PARTS CAN BE FOUND ON THE UKRAINIAN SUBMARINE SQUADRONS SPRUES

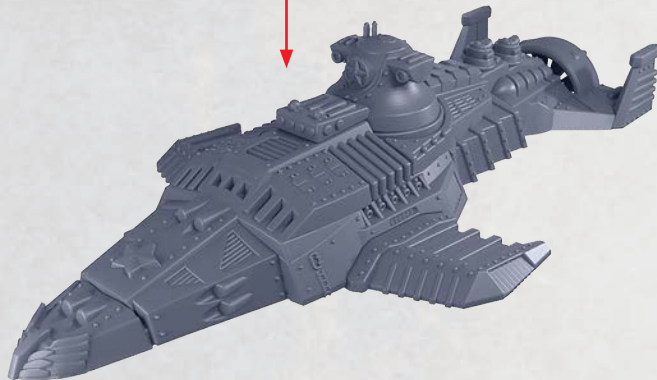
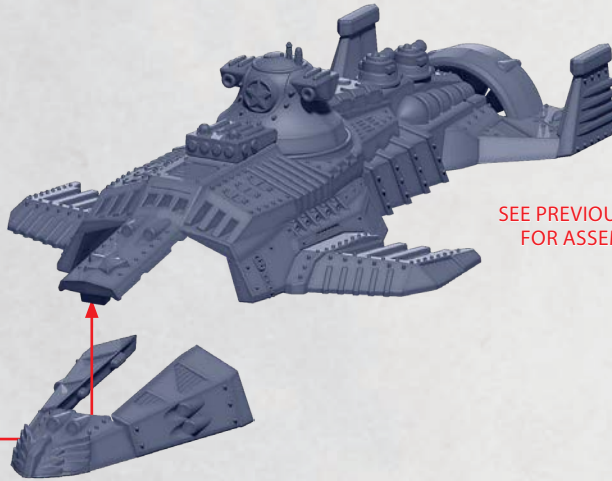


SEE PREVIOUS  
PAGE FOR  
ASSEMBLY



# AKULA CLASS GRAND SUBMARINE

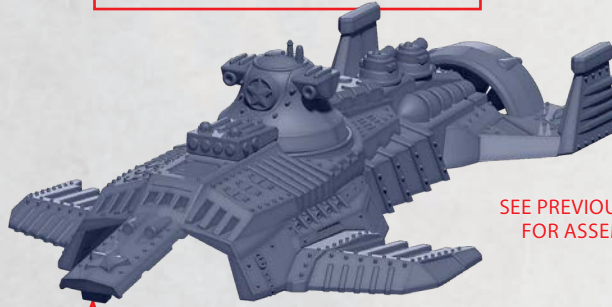
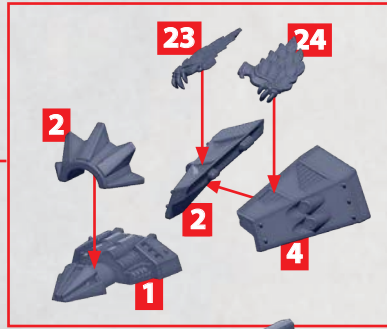
PARTS CAN BE FOUND ON THE UKRAINIAN SUBMARINE SQUADRONS SPRUES





# DEATH BRINGER CLASS GRAND SUBMARINE

PARTS CAN BE FOUND ON THE UKRAINIAN SUBMARINE SQUADRONS SPRUES



SEE PREVIOUS PAGE  
FOR ASSEMBLY





# KHYZHAK CLASS ATTACK SUBMARINE

PARTS CAN BE FOUND ON THE UKRAINIAN SUBMARINE SQUADRONS SPRUES

