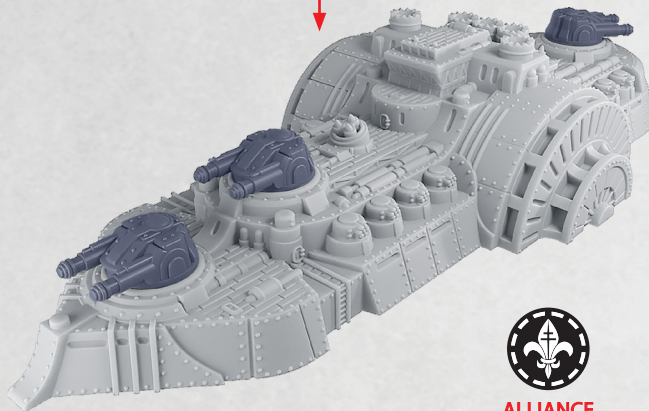
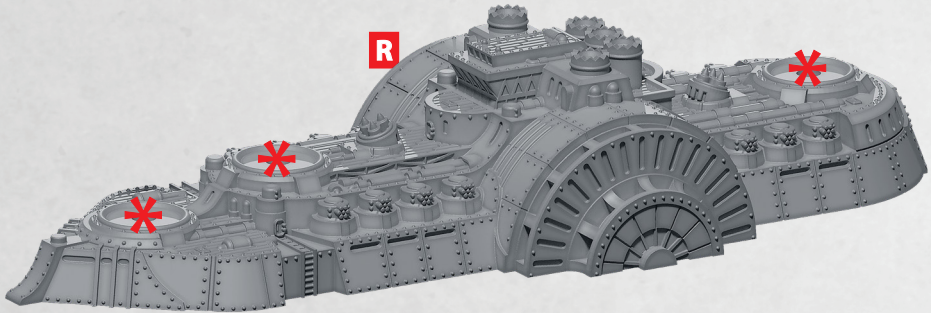


COLUMBIA HEAVY BATTLESHIP

PARTS CAN BE FOUND ON THE ORE WAR VETERANS SQUADRONS SPRUES AND RESIN



ALLIANCE
TURRETS



38 / 56-57



UNION
TURRETS



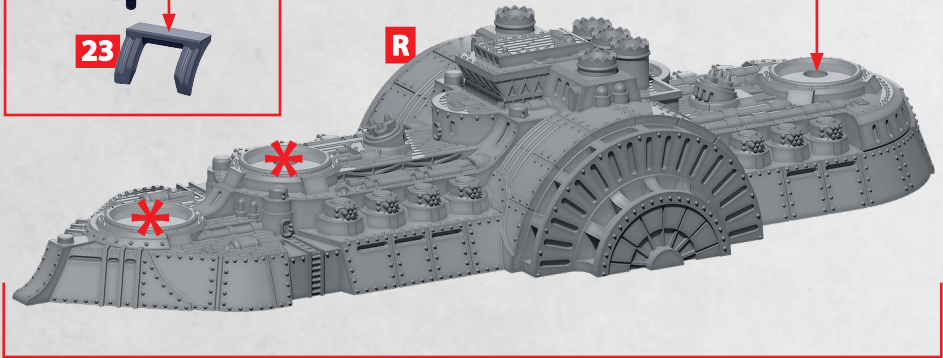
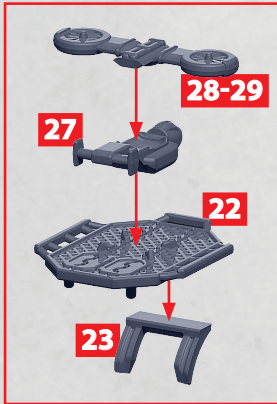
35 / 52-53

R = RESIN

* ALL TURRETS ARE INTERCHANGEABLE

VIRGINIA & USS MONTIOR HEAVY BATTLESHIP

PARTS CAN BE FOUND ON THE ORE WAR VETERANS SQUADRONS SPRUES AND RESIN



ALLIANCE TURRETS FOR VIRGINIA



UNION TURRETS FOR USS MONTIOR



R = RESIN

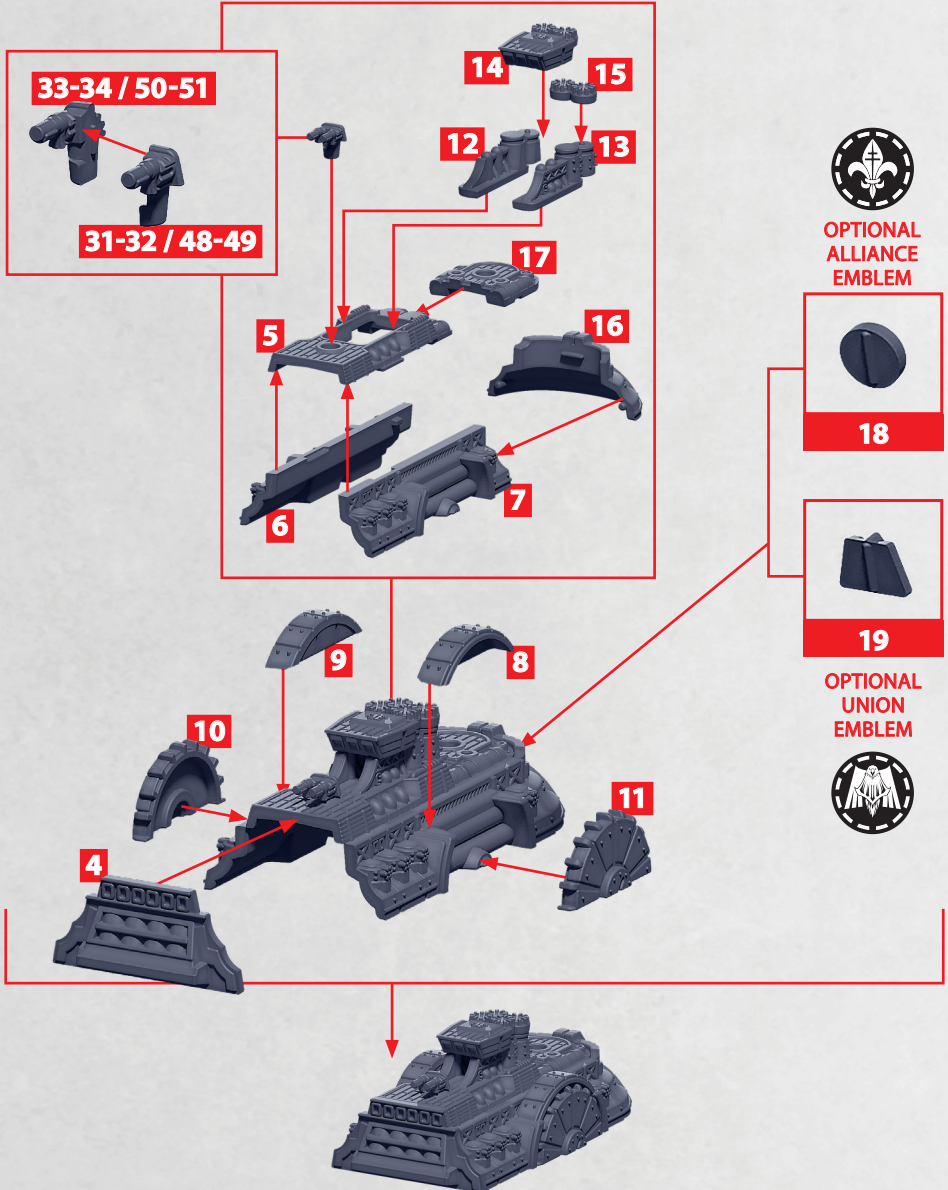
***** ALL TURRETS ARE INTERCHANGEABLE

38 / 56-57

35 / 52-53

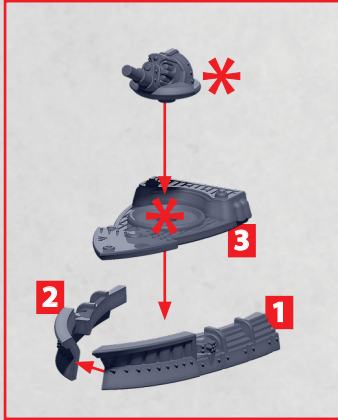
GETTYSBURG, PROVIDENCE, SARATOGA AND SUMTER CLASS CRUISER HULL

PARTS CAN BE FOUND ON THE ORE WAR VETERANS SQUADRONS SPRUES



GETTYSBURG CLASS CRUISER

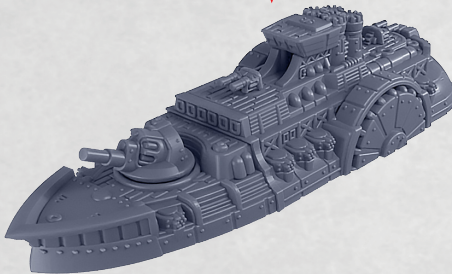
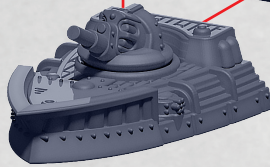
PARTS CAN BE FOUND ON THE ORE WAR VETERANS SQUADRONS SPRUES



SEE PAGE 3
FOR GUN
ASSEMBLY



SEE PAGE 3
FOR AFT
ASSEMBLY



ALLIANCE
TURRETS



38 / 56-57



UNION
TURRETS

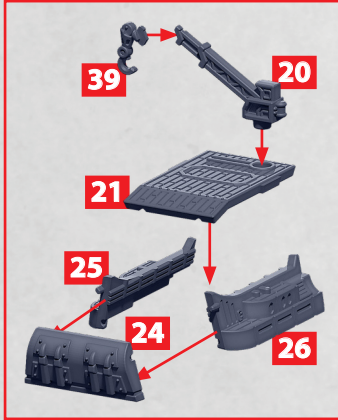


35 / 52-53

* ALL TURRETS ARE INTERCHANGEABLE

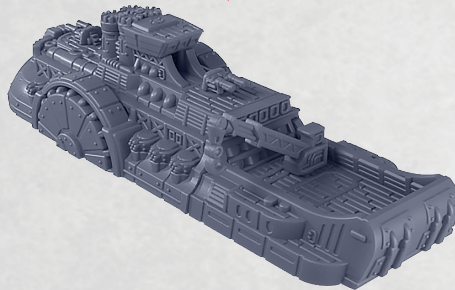
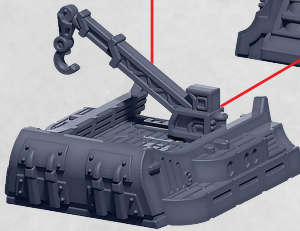
PROVIDENCE CLASS CRUISER

PARTS CAN BE FOUND ON THE ORE WAR VETERANS SQUADRONS SPRUES



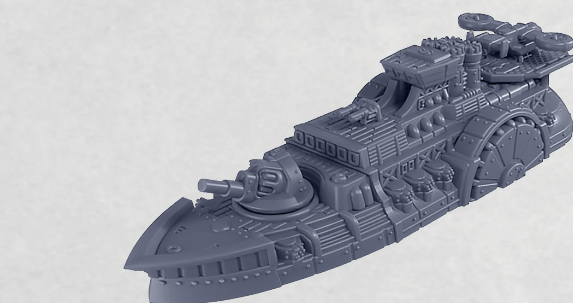
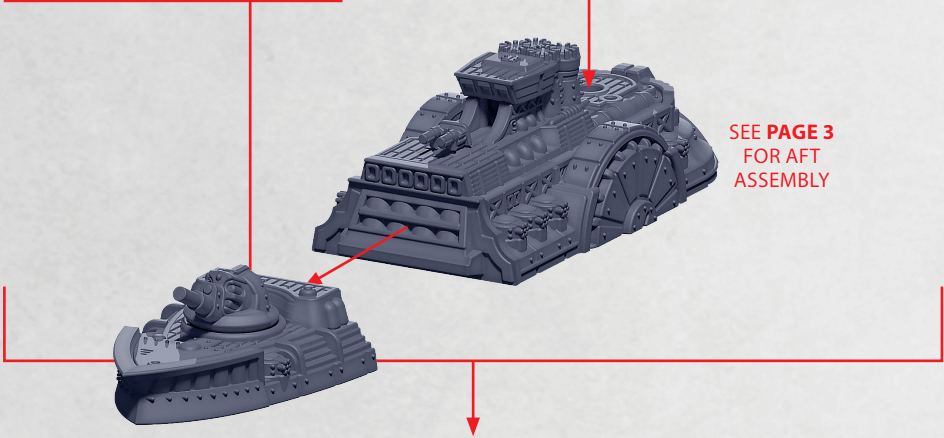
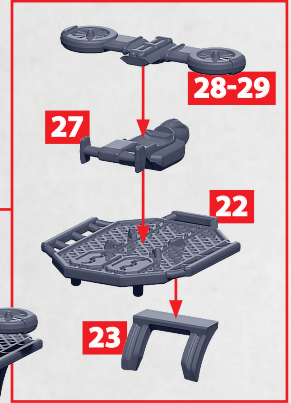
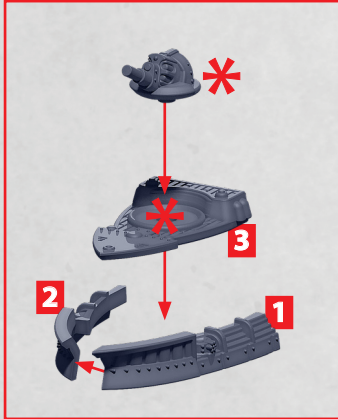
SEE PAGE 3
FOR GUN
ASSEMBLY

SEE PAGE 3
FOR AFT
ASSEMBLY



SARATOGA CLASS CRUISER

PARTS CAN BE FOUND ON THE ORE WAR VETERANS SQUADRONS SPRUES



ALLIANCE TURRETS



38 / 56-57



UNION TURRETS

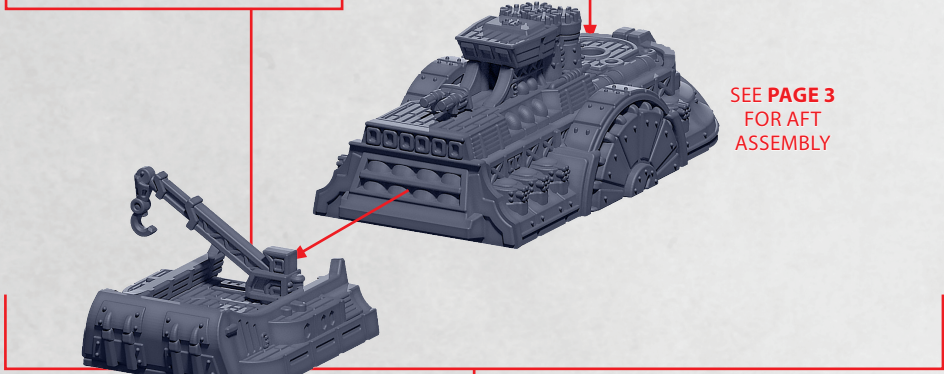
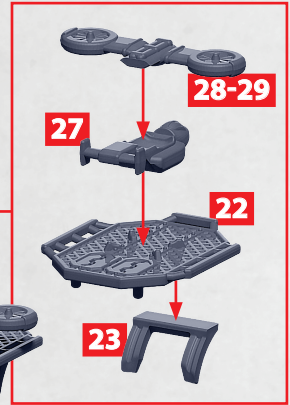
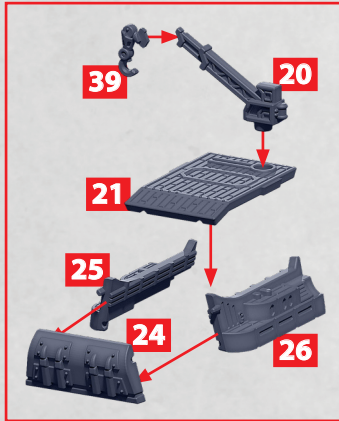


35 / 52-53

* ALL TURRETS ARE INTERCHANGEABLE

SUMTER CLASS CRUISER

PARTS CAN BE FOUND ON THE ORE WAR VETERANS SQUADRONS SPRUES



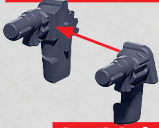
SEE PAGE 3
FOR AFT
ASSEMBLY



SPRINGFIELD CLASS CORVETTE

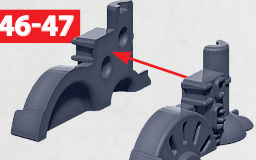
PARTS CAN BE FOUND ON THE ORE WAR VETERANS SQUADRONS SPRUES

33-34 / 50-51

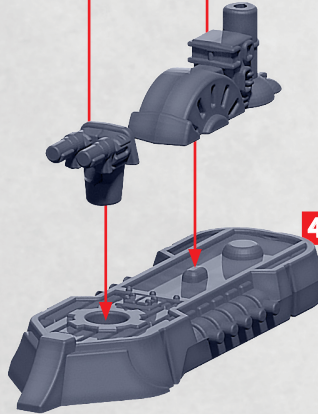


31-32 / 48-49

46-47



44-45



42-43

