

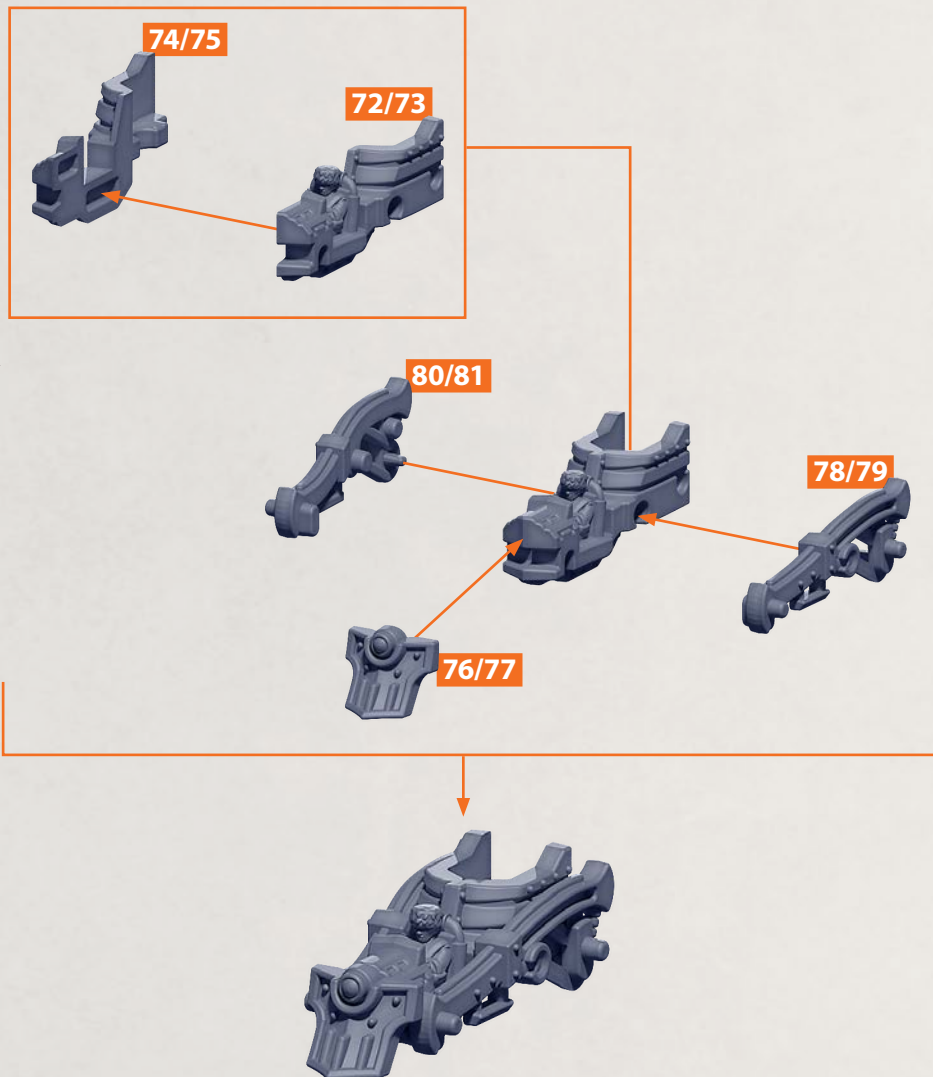
NOTE: RINSE SPRUES IN WARM SOAPY WATER TO REMOVE ANY MOULD RELEASE BEFORE ASSEMBLY



IMPORTANT: PLEASE READ THROUGH ALL THE ASSEMBLY GUIDE BEFORE CHOOSING YOUR BUILD OPTIONS AS SOME MODELS SHARE COMPONENTS

FRONTIER DUSTCUTTER BODY ASSEMBLY

PARTS CAN BE FOUND ON THE UNION ASSAULT REGIMENT SPRUE

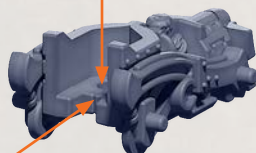


NOTE: RINSE SPRUES IN WARM SOAPY WATER TO REMOVE ANY MOULD RELEASE BEFORE ASSEMBLY



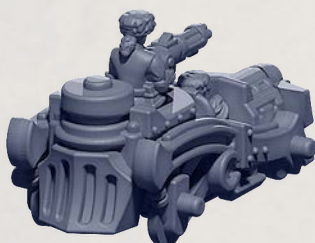
FRONTIER DUSTCUTTER BODY ASSEMBLY

PARTS CAN BE FOUND ON THE UNION ASSAULT REGIMENT SPRUE



SEE **PAGE 1** FOR BODY ASSEMBLY

84/85

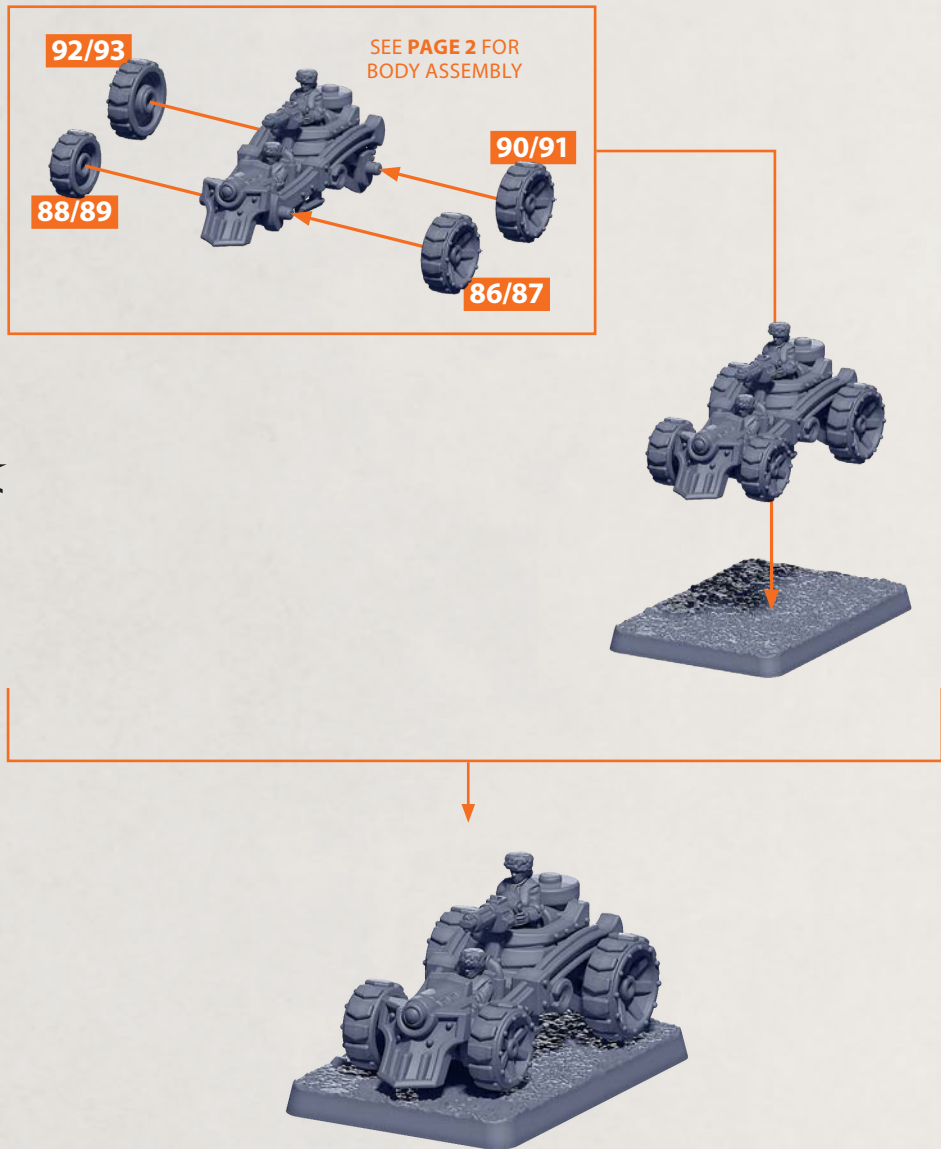


NOTE: RINSE SPRUES IN WARM SOAPY WATER TO REMOVE ANY MOULD RELEASE BEFORE ASSEMBLY



FRONTIER DUSTCUTTER BODY ASSEMBLY

PARTS CAN BE FOUND ON THE UNION ASSAULT REGIMENT SPRUE

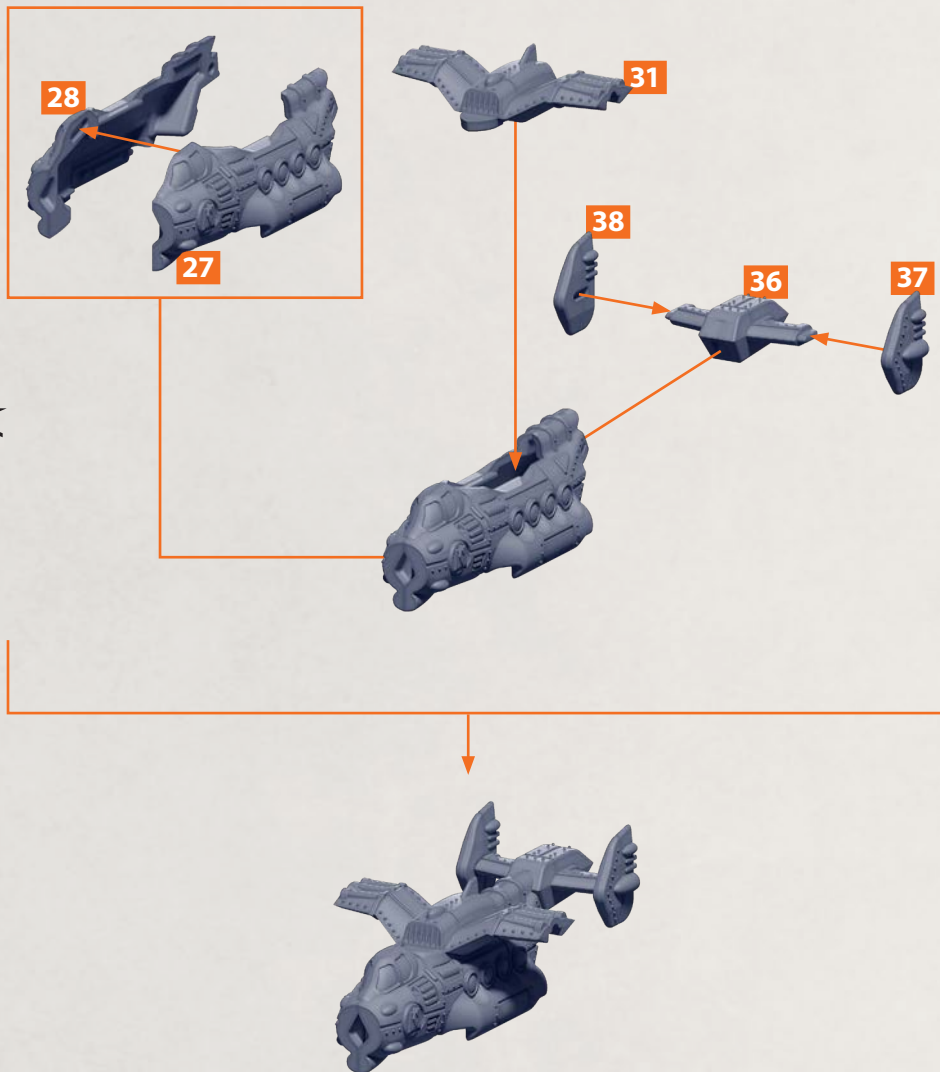


NOTE: RINSE SPRUES IN WARM SOAPY WATER TO REMOVE ANY MOULD RELEASE BEFORE ASSEMBLY



ROTOR/GUNSHIP MAIN BODY ASSEMBLY

PARTS CAN BE FOUND ON THE UNION ASSAULT REGIMENT SPRUE



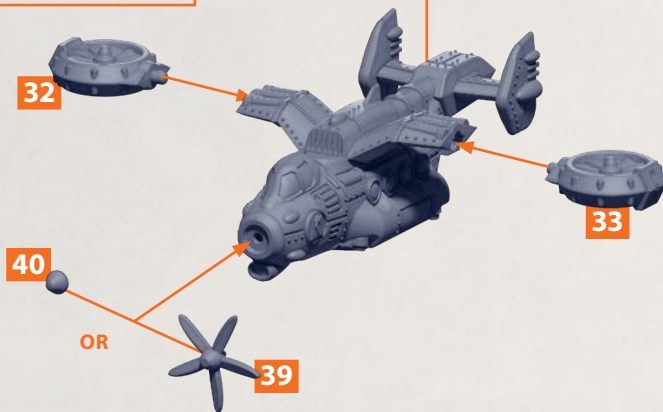
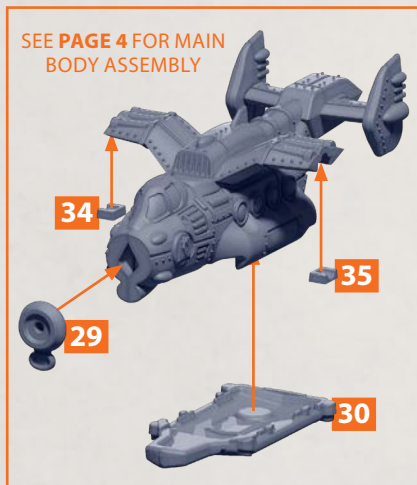
NOTE: RINSE SPRUES IN WARM SOAPY WATER TO REMOVE ANY MOULD RELEASE BEFORE ASSEMBLY



ROTOR/GUNSHIP MAIN BODY ASSEMBLY

PARTS CAN BE FOUND ON THE UNION ASSAULT REGIMENT SPRUE

SEE PAGE 4 FOR MAIN BODY ASSEMBLY



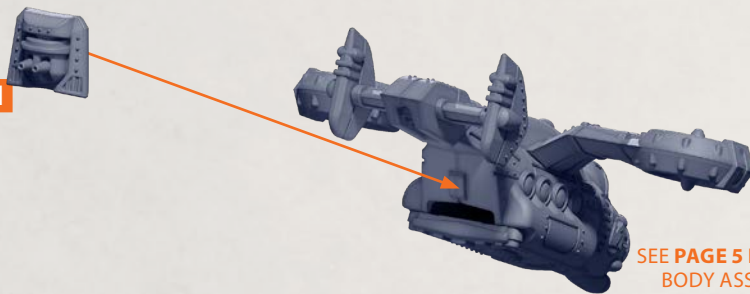
NOTE: RINSE SPRUES IN WARM SOAPY WATER TO REMOVE ANY MOULD RELEASE BEFORE ASSEMBLY



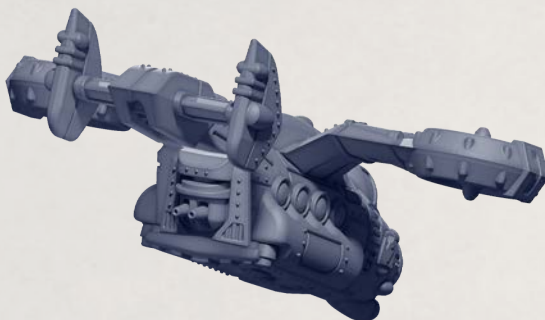
ROTOR/GUNSHIP MAIN BODY ASSEMBLY

PARTS CAN BE FOUND ON THE UNION ASSAULT REGIMENT SPRUE

41



SEE **PAGE 5** FOR MAIN BODY ASSEMBLY



NOTE: RINSE SPRUES IN WARM SOAPY WATER TO REMOVE ANY MOULD RELEASE BEFORE ASSEMBLY



TALON ROTOR

PARTS CAN BE FOUND ON THE UNION ASSAULT REGIMENT SPRUE

SEE PAGE 5 FOR MAIN BODY ASSEMBLY

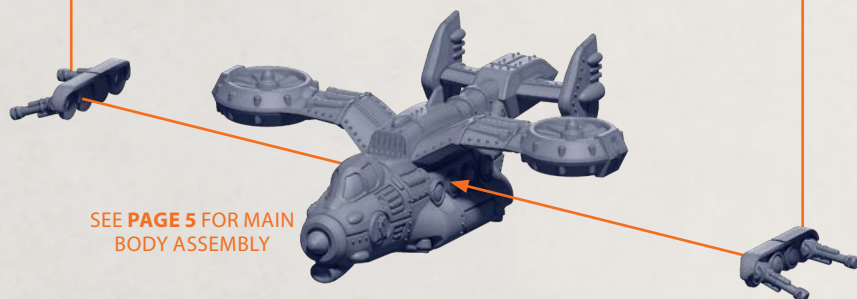
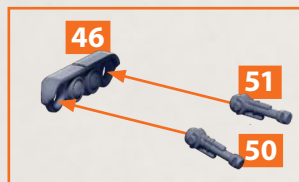
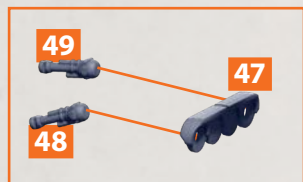


NOTE: RINSE SPRUES IN WARM SOAPY WATER TO REMOVE ANY MOULD RELEASE BEFORE ASSEMBLY



SPECTRE GUNSHIP

PARTS CAN BE FOUND ON THE UNION ASSAULT REGIMENT SPRUE



NOTE: RINSE SPRUES IN WARM SOAPY WATER TO REMOVE ANY MOULD RELEASE BEFORE ASSEMBLY



SPECTRE GUNSHIP

PARTS CAN BE FOUND ON THE UNION ASSAULT REGIMENT SPRUE

SEE **PAGE 8** FOR MAIN BODY ASSEMBLY



44

45

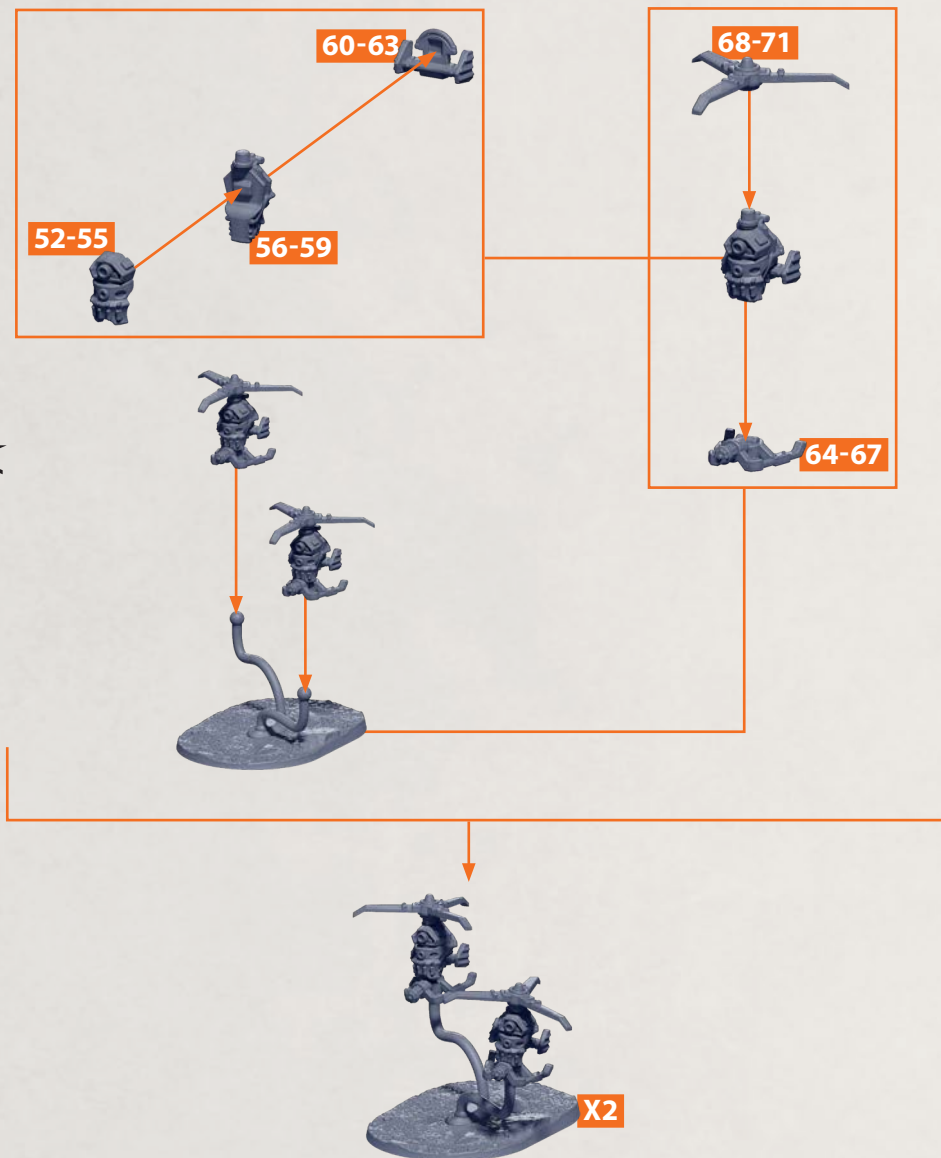


NOTE: RINSE SPRUES IN WARM SOAPY WATER TO REMOVE ANY MOULD RELEASE BEFORE ASSEMBLY



UR-47 AUTOGRYO

PARTS CAN BE FOUND ON THE UNION ASSAULT REGIMENT SPRUE



NOTE: RINSE SPRUES IN WARM SOAPY WATER TO REMOVE ANY MOULD RELEASE BEFORE ASSEMBLY

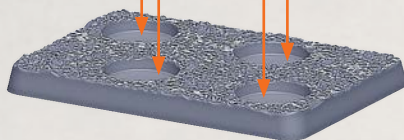


MINUTEMEN SHOCK TROOPERS

PARTS CAN BE FOUND ON THE UNION ASSAULT REGIMENT SPRUE



NOTE: ONE MODEL MUST INCLUDE THE COMMANDER (PART 18) WHO USES A BACKPACK FROM A REPLACED MINUTEMAN.



EXAMPLES SHOWING THE COMMANDER (LEFT) AND STANDARD MODELS (RIGHT)



NOTE: RINSE SPRUES IN WARM SOAPY WATER TO REMOVE ANY MOULD RELEASE BEFORE ASSEMBLY



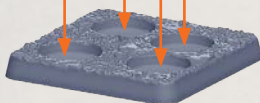
FRONTIER RANGERS

PARTS CAN BE FOUND ON THE UNION ASSAULT REGIMENT SPRUE

NOTE: ONE MODEL MUST INCLUDE THE COMMANDER (PART 09)



ANY COMBINATION OF THE FRONTIER RANGERS CAN BE ADDED TO THE STANDARD BASE



EXAMPLES SHOWING THE COMMANDER (LEFT) AND STANDARD MODELS (RIGHT)

