

**NOTE: RINSE SPRUES IN WARM SOAPY WATER TO REMOVE ANY MOULD RELEASE BEFORE ASSEMBLY**



## OFFICER FLAGS

FLAG PARTS CAN BE FOUND ACROSS VARIOUS ARMoured CLASH SPRUES AND THE BASES SPRUE

THERE ARE VARIOUS FLAG OPTIONS ACROSS ARMoured CLASH SPRUES USED TO DEFINE LEADER MODELS WITHIN UNITS

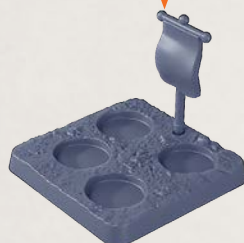
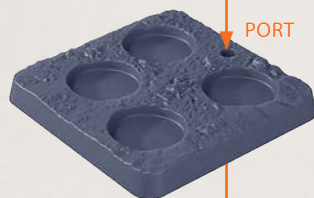
ARMoured CLASH SPRUES WILL CONTAIN VARIOUS OPTIONS FOR THE OFFICER'S FLAG, THESE CAN BE APPLIED TO A SUITABLE AREA ON ANY MODEL NOT SITUATED ON A BASE



ON THE BASES SPRUE YOU WILL FIND A PENNANT FLAG AND BASE THAT INCLUDES A PORT FOR IT



THIS PARTICULAR COMBINATION CAN BE USED WITH UNITS TO DEFINE A MODEL THAT CONTAINS AN OFFICER (PARTICULARLY WITH FIGURES SETS THAT DO NOT CONTAIN A FLAG BEARER)



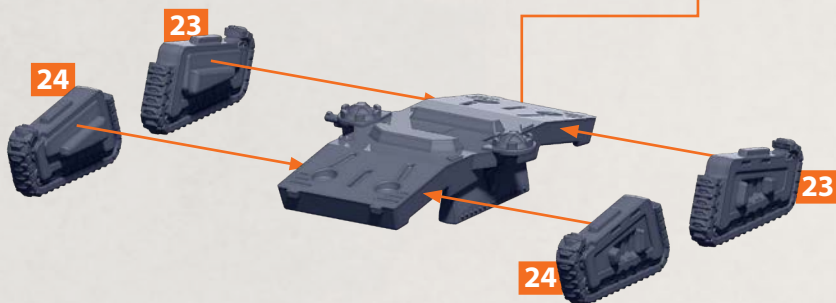
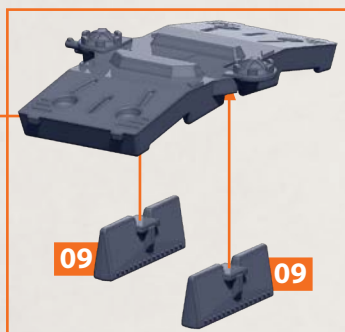
**NOTE: RINSE SPRUES IN WARM SOAPY WATER TO REMOVE ANY MOULD RELEASE BEFORE ASSEMBLY**



**IMPORTANT:** PLEASE READ THROUGH ALL THE ASSEMBLY GUIDE BEFORE CHOOSING YOUR BUILD OPTIONS AS SOME MODELS SHARE COMPONENTS

## CONQUEROR TANK, CAMLAN TRANSPORT & CHALLENGER TANK BODY BUILD

PARTS CAN BE FOUND ON THE CROWN SUPERHEAVY REGIMENT SPRUES

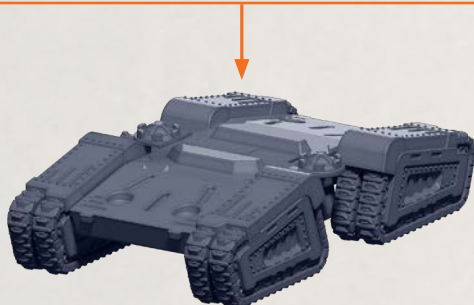
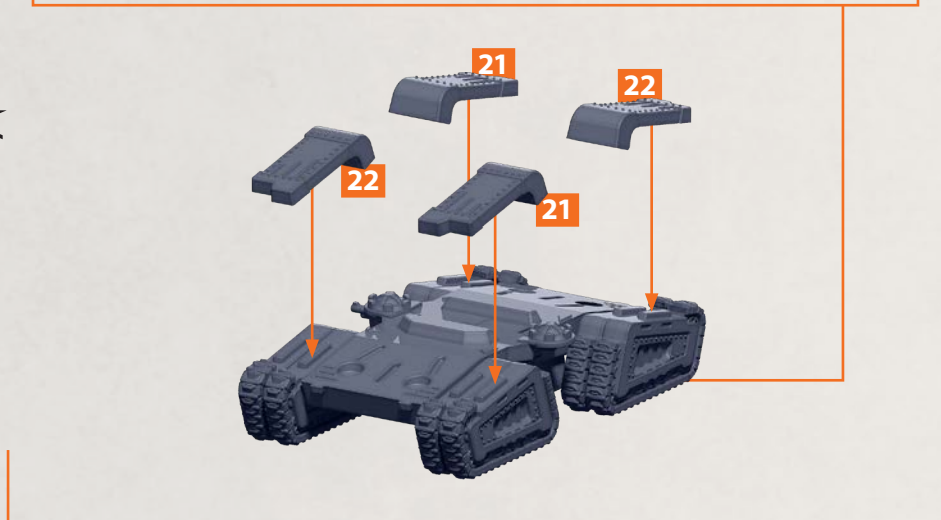


**NOTE: RINSE SPRUES IN WARM SOAPY WATER TO REMOVE ANY MOULD RELEASE BEFORE ASSEMBLY**



# CONQUEROR TANK, CAMLAN TRANSPORT & CHALLENGER TANK BODY BUILD CONTINUED

PARTS CAN BE FOUND ON THE **CROWN SUPERHEAVY REGIMENT** SPRUES

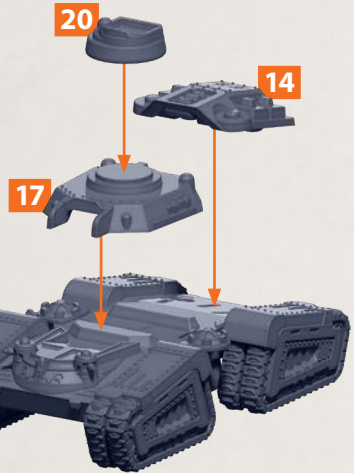


**NOTE: RINSE SPRUES IN WARM SOAPY WATER TO REMOVE ANY MOULD RELEASE BEFORE ASSEMBLY**



# CONQUEROR TANK, CAMLAN TRANSPORT & CHALLENGER TANK BODY BUILD CONTINUED

PARTS CAN BE FOUND ON THE **CROWN SUPERHEAVY REGIMENT** SPRUES



**NOTE: RINSE SPRUES IN WARM SOAPY WATER TO REMOVE ANY MOULD RELEASE BEFORE ASSEMBLY**

# CONQUEROR TANK, CAMLAN TRANSPORT & CHALLENGER TANK BODY BUILD CONTINUED

PARTS CAN BE FOUND ON THE **CROWN SUPERHEAVY REGIMENT** SPRUES



ONE TANK SHOULD INCLUDE THE OPEN HATCH OPTION (ABOVE) TO DEFINE THE OFFICER, ALL OTHERS ARE CLOSED (BELOW)

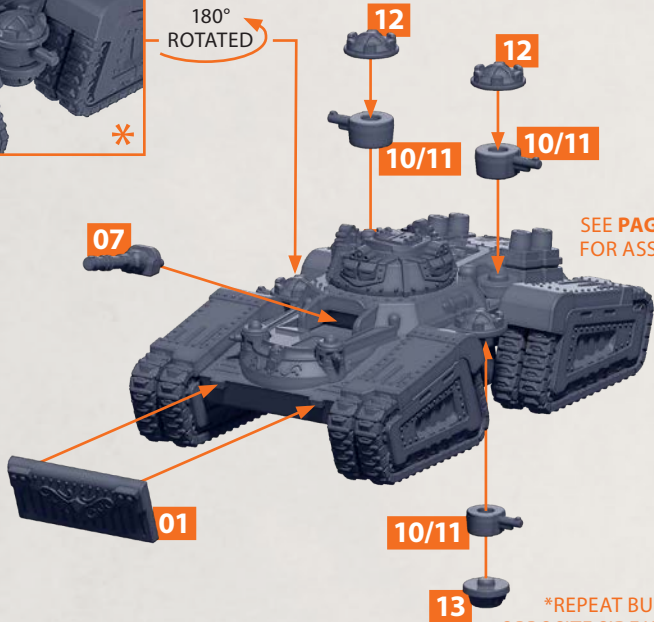


**NOTE: RINSE SPRUES IN WARM SOAPY WATER TO REMOVE ANY MOULD RELEASE BEFORE ASSEMBLY**



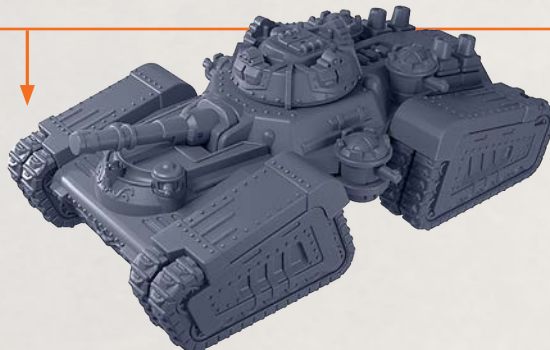
# CONQUEROR SUPER-HEAVY BATTLE TANK

PARTS CAN BE FOUND ON THE **CROWN SUPERHEAVY REGIMENT** SPRUES



SEE PAGES 2-5 FOR ASSEMBLY

\*REPEAT BUILD ON OPPOSITE SIDE WITH **PARTS 10/11 AND 13**, SEE IMAGE FOR FINAL BUILD

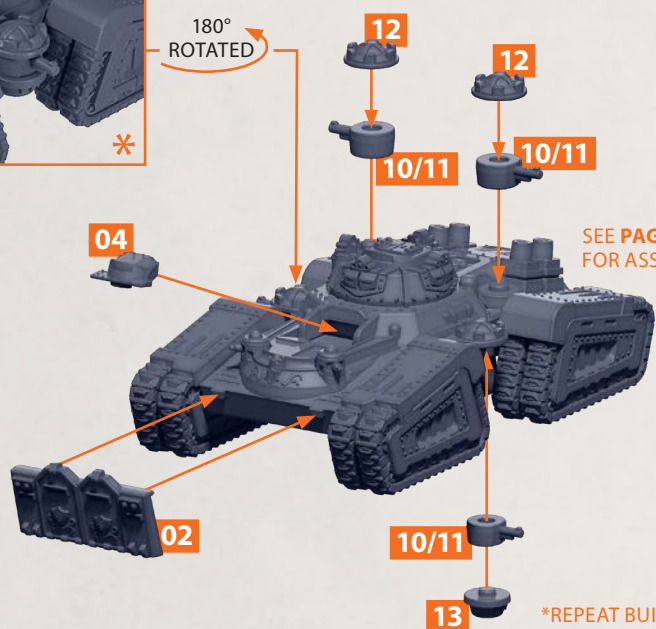


**NOTE: RINSE SPRUES IN WARM SOAPY WATER TO REMOVE ANY MOULD RELEASE BEFORE ASSEMBLY**



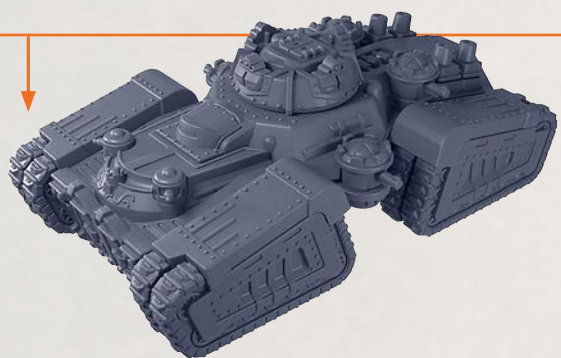
# CAMLAN SUPER-HEAVY TRANSPORT

PARTS CAN BE FOUND ON THE **CROWN SUPERHEAVY REGIMENT** SPRUES



SEE PAGES 2-5 FOR ASSEMBLY

\*REPEAT BUILD ON OPPOSITE SIDE WITH PARTS 10/11 AND 13, SEE IMAGE FOR FINAL BUILD

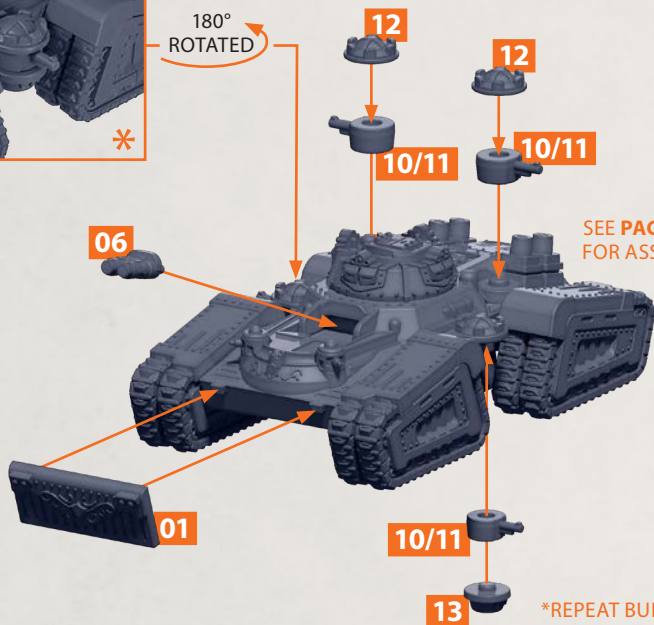


**NOTE: RINSE SPRUES IN WARM SOAPY WATER TO REMOVE ANY MOULD RELEASE BEFORE ASSEMBLY**



# CHALLENGER SUPER-HEAVY ASSAULT TANK

PARTS CAN BE FOUND ON THE **CROWN SUPERHEAVY REGIMENT** SPRUES



SEE PAGES 2-5 FOR ASSEMBLY

\*REPEAT BUILD ON OPPOSITE SIDE WITH **PARTS 10/11 AND 13**, SEE IMAGE FOR FINAL BUILD

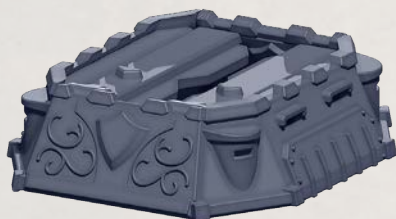
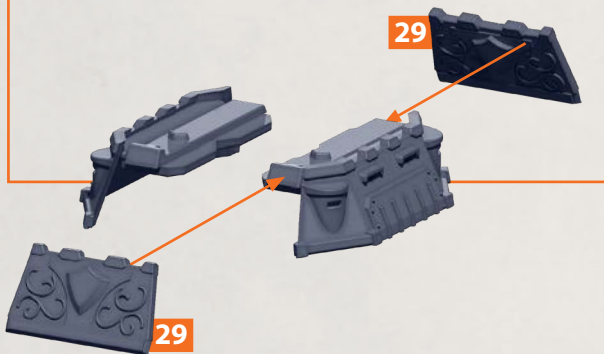
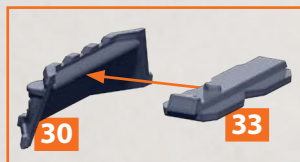


**NOTE: RINSE SPRUES IN WARM SOAPY WATER TO REMOVE ANY MOULD RELEASE BEFORE ASSEMBLY**



# CORFE BASTION & ROXBURGH FIREBASE BODY BUILD

PARTS CAN BE FOUND ON THE **CROWN SUPERHEAVY REGIMENT** SPRUES

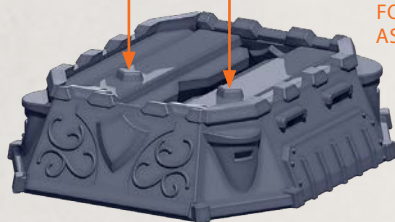


**NOTE: RINSE SPRUES IN WARM SOAPY WATER TO REMOVE ANY MOULD RELEASE BEFORE ASSEMBLY**



# CORFE BASTION & ROXBURGH FIREBASE BODY BUILD CONTINUED

PARTS CAN BE FOUND ON THE **CROWN SUPERHEAVY REGIMENT** SPRUES



**SEE PAGE 9  
FOR BODY  
ASSEMBLY**

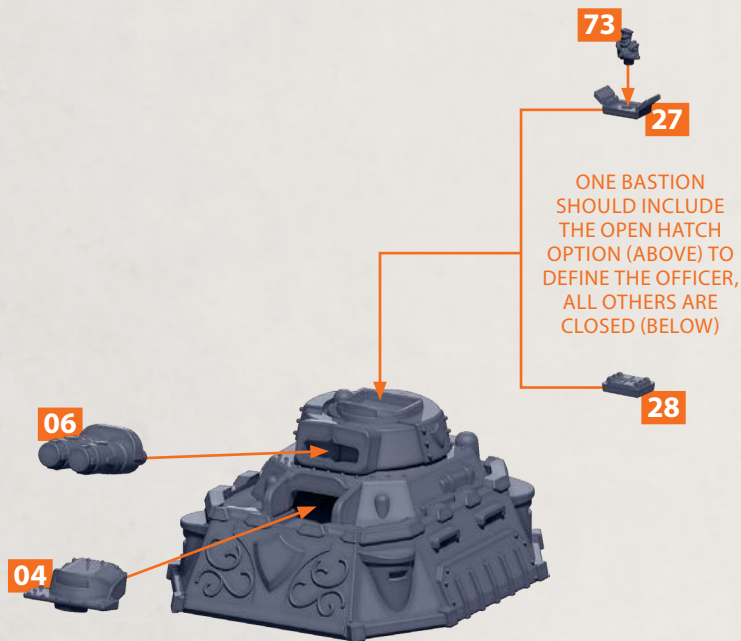


**NOTE: RINSE SPRUES IN WARM SOAPY WATER TO REMOVE ANY MOULD RELEASE BEFORE ASSEMBLY**



# CORFE BASTION

PARTS CAN BE FOUND ON THE CROWN SUPERHEAVY REGIMENT SPRUES



SEE PAGES 9-10 FOR BODY ASSEMBLY

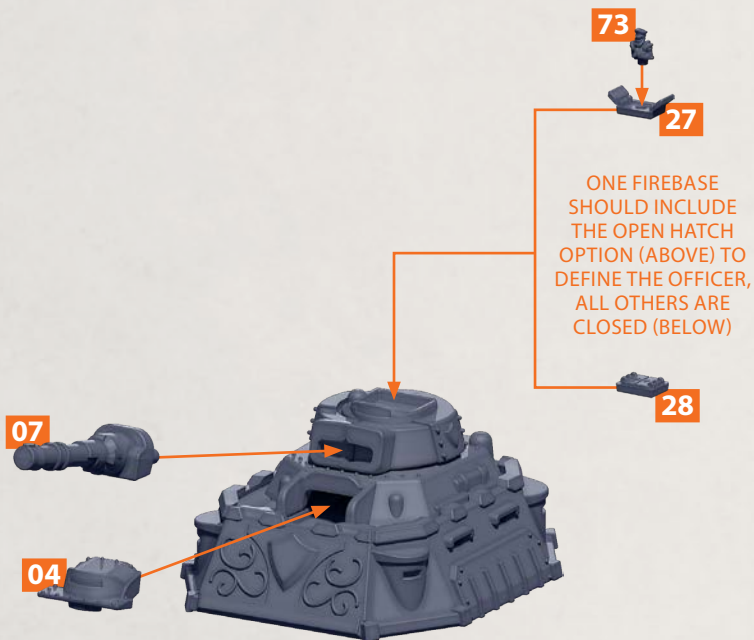


**NOTE: RINSE SPRUES IN WARM SOAPY WATER TO REMOVE ANY MOULD RELEASE BEFORE ASSEMBLY**



# ROXBURGH FIREBASE

PARTS CAN BE FOUND ON THE **CROWN SUPERHEAVY REGIMENT** SPRUES



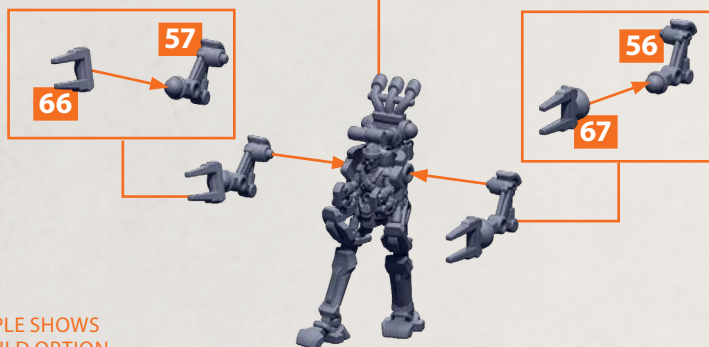
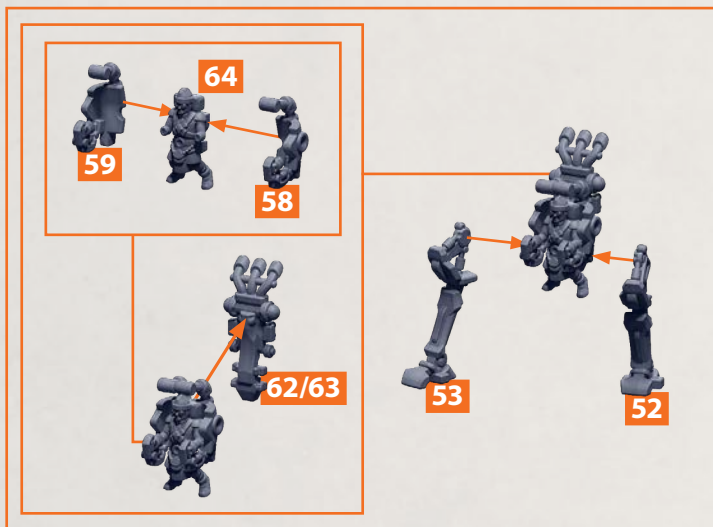
SEE PAGES 9-10 FOR BODY ASSEMBLY



**NOTE: RINSE SPRUES IN WARM SOAPOY WATER TO REMOVE ANY MOULD RELEASE BEFORE ASSEMBLY**

## ROYAL ENGINEER DRAGOONS

PARTS CAN BE FOUND ON THE **CROWN SUPERHEAVY REGIMENT** SPRUES



EXAMPLE SHOWS ONE BUILD OPTION

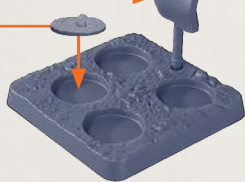
**NOTE:** PILOT PART 64 CAN BE SWAPPED OUT WITH PART 65, LEGS PARTS 53 AND 52 CAN BE SWAPPED OUT WITH PARTS 55 AND 54 AND ARMS PARTS 57/66 AND 56/67 CAN BE SWAPPED WITH PARTS 70/68 AND 71/69 BUT ALL PARTS MUCH CHANGE TOGETHER



ONE MODEL SHOULD BE PLACED ON A PENNANT FLAG BASE OR HAVE A FLAG ATTACHED (SEE PAGE 1) IN ORDER TO DEFINE THE MODEL AS AN OFFICER



USE BLANK STANDS TO FILL THE EMPTY SLOTS



**NOTE: RINSE SPRUES IN WARM SOAPY WATER TO REMOVE ANY MOULD RELEASE BEFORE ASSEMBLY**



# ROYAL ENGINEER ARTIFICERS

PARTS CAN BE FOUND ON THE **CROWN SUPERHEAVY REGIMENT** SPRUES

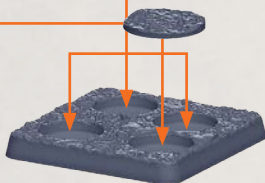
**NOTE: THE OFFICER (PART 41) MUST APPEAR ON ONE OF THE MODEL BASES**



ANY COMBINATION OF THE BACKPACKS CAN BE ADDED TO THE ARTIFICERS. ANY COMBINATION OF THE ARTIFICERS CAN BE ADDED TO THE BASE.

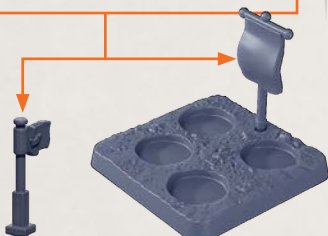
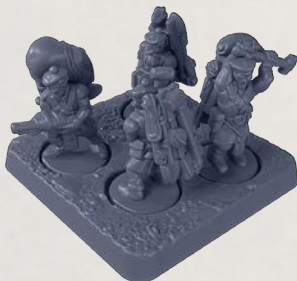


BLANK STAND MUST BE ADDED TO THE BASE WHEN USING **PART 38**



EXAMPLES SHOWING BOTH THE OFFICER (LEFT) AND STANDARD MODELS (RIGHT)

THE OFFICER BASE CAN BE PLACED ON A **PENNANT FLAG BASE** OR HAVE A **FLAG ATTACHED** (SEE PAGE 1) IN ORDER TO FURTHER DEFINE THE MODEL AS AN OFFICER



\*IF USING THE ARTIFICERS OFFICER FROM A SPRUE THEN ONE OF THE STANDARD TROOPS WILL NEED TO BE SUBSTITUTED