

NOTE: RINSE SPRUES IN WARM SOAPY WATER TO REMOVE ANY MOULD RELEASE BEFORE ASSEMBLY



OFFICER FLAGS

FLAG PARTS CAN BE FOUND ACROSS **VARIOUS ARMoured CLASH** SPRUES AND THE **BASES** SPRUE

THERE ARE VARIOUS FLAG OPTIONS ACROSS ARMoured CLASH SPRUES USED TO DEFINE LEADER MODELS WITHIN UNITS

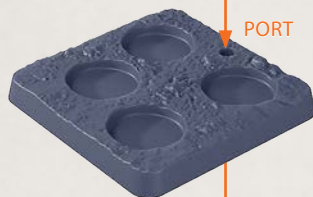
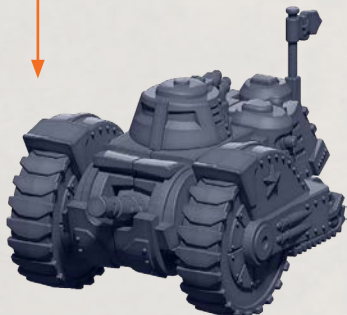
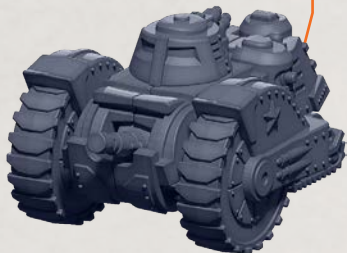
ARMoured CLASH SPRUES WILL CONTAIN VARIOUS OPTIONS FOR THE OFFICER'S FLAG, THESE CAN BE APPLIED TO A SUITABLE AREA ON ANY MODEL NOT SITUATED ON A BASE



ON THE **BASES** SPRUE YOU WILL FIND A PENNANT FLAG AND BASE THAT INCLUDES A PORT FOR IT



THIS PARTICULAR COMBINATION CAN BE USED WITH UNITS TO DEFINE A MODEL THAT CONTAINS AS AN OFFICER (PARTICULARLY WITH FIGURES SETS THAT DO NOT CONTAIN A FLAG BEARER)



PORT



NOTE: RINSE SPRUES IN WARM SOAPY WATER TO REMOVE ANY MOULD RELEASE BEFORE ASSEMBLY



RYADOVOY RIFLE PLATOON

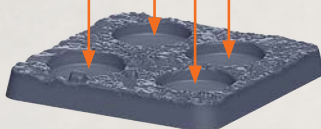
PARTS CAN BE FOUND ON THE **COMMONWEALTH INFANTRY REGIMENT** SPRUES



NOTE: ONE MODEL MUST INCLUDE THE OFFICER (PART 21), HIS HORSE (PARTS 22 & 23) AND THE FLAG BEARER



NOTE: ANY COMBINATION OF THE TROOPS CAN BE ADDED TO THE STANDARD BASES



EXAMPLES SHOWING BOTH THE OFFICER (LEFT) AND STANDARD MODELS (RIGHT)

NOTE: RINSE SPRUES IN WARM SOAPY WATER TO REMOVE ANY MOULD RELEASE BEFORE ASSEMBLY



COSSACK OVCHARKA WAR DOGS

PARTS CAN BE FOUND ON THE **COMMONWEALTH INFANTRY REGIMENT** SPRUES

NOTE: ONE MODEL MUST INCLUDE AN OFFICER (PART 38)



38

TROOPS STAND BEHIND THE WAR DOGS



39



40



5



6



43



44



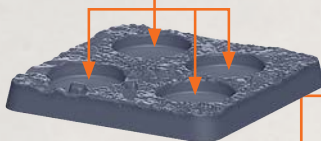
45



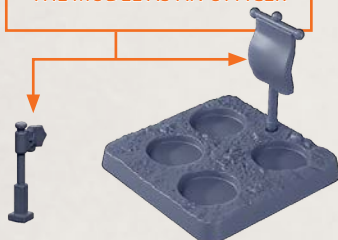
46

NOTE: ANY COMBINATION OF THE TROOPS CAN BE ADDED TO THE STANDARD BASES

EXAMPLES SHOWING BOTH THE OFFICER (*BELOW*) AND STANDARD MODELS (*RIGHT*)



THE OFFICER BASE CAN BE PLACED ON A **PENNANT FLAG BASE** OR HAVE A **FLAG ATTACHED** (*SEE PAGE 1*) IN ORDER TO FURTHER DEFINE THE MODEL AS AN OFFICER

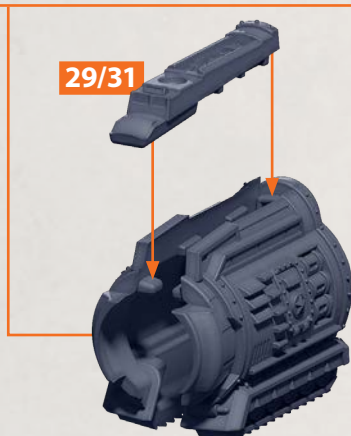
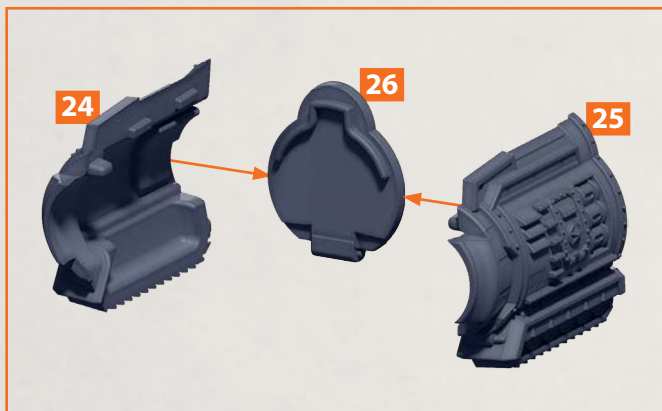


NOTE: RINSE SPRUES IN WARM
SOAPY WATER TO REMOVE ANY
MOULD RELEASE BEFORE ASSEMBLY



KROT HEAVY BORER BODY ASSEMBLY

PARTS CAN BE FOUND ON THE **COMMONWEALTH INFANTRY REGIMENT** SPRUES

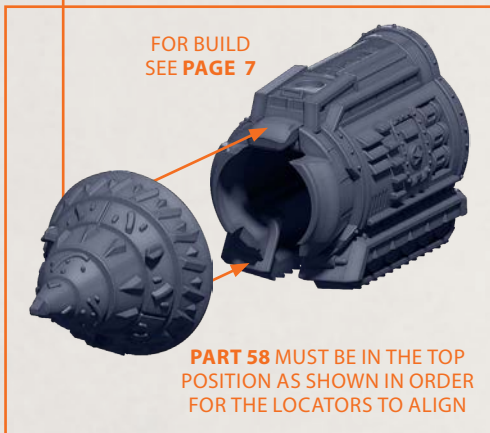
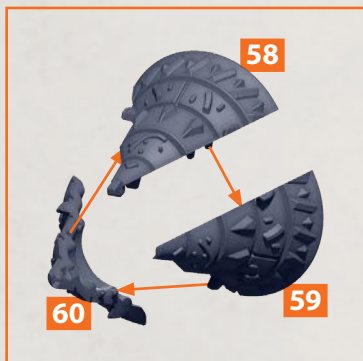


NOTE: RINSE SPRUES IN WARM SOAPY WATER TO REMOVE ANY MOULD RELEASE BEFORE ASSEMBLY



KROT HEAVY BORER

PARTS CAN BE FOUND ON THE **COMMONWEALTH INFANTRY REGIMENT** SPRUES



ONE BORER SHOULD INCLUDE THE OPEN HATCH OPTION (ABOVE) TO DEFINE THE OFFICER, ALL OTHERS ARE CLOSED (BELOW)



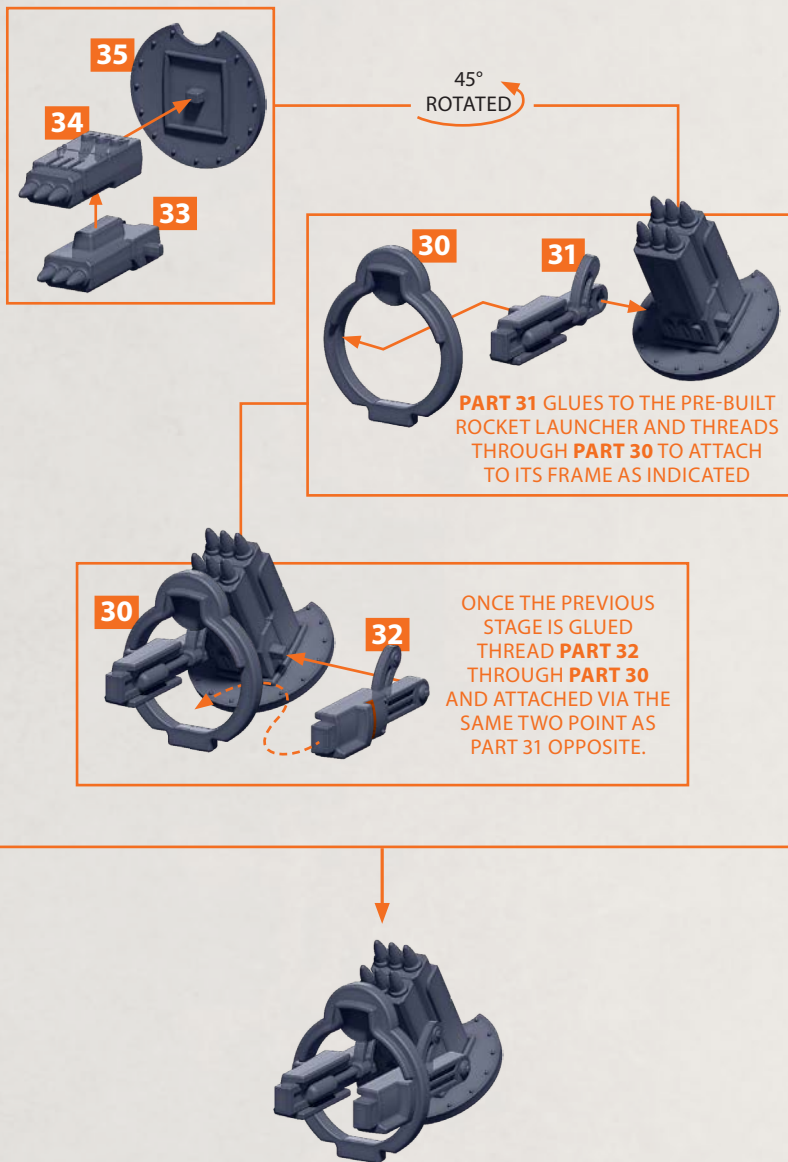
EXAMPLES SHOWING BOTH THE OFFICER (LEFT) AND STANDARD MODELS (RIGHT)

NOTE: RINSE SPRUES IN WARM SOAPY WATER TO REMOVE ANY MOULD RELEASE BEFORE ASSEMBLY



DIKOBRAZ ARTILLERY BORER BODY ASSEMBLY CONTINUED

PARTS CAN BE FOUND ON THE **COMMONWEALTH INFANTRY REGIMENT** SPRUES



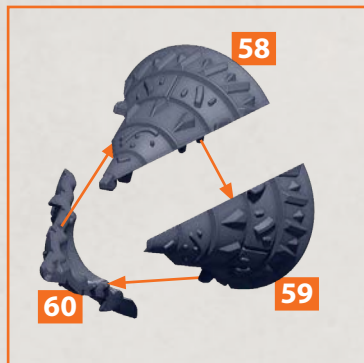
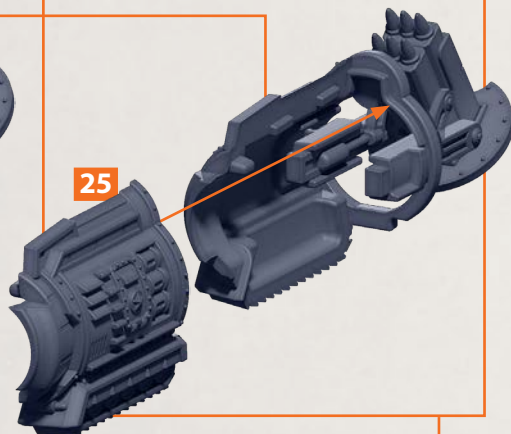
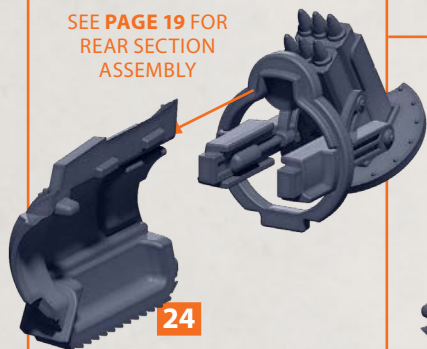
NOTE: RINSE SPRUES IN WARM SOAPY WATER TO REMOVE ANY MOULD RELEASE BEFORE ASSEMBLY



DIKOBRAZ ARTILLERY BORER BODY ASSEMBLY

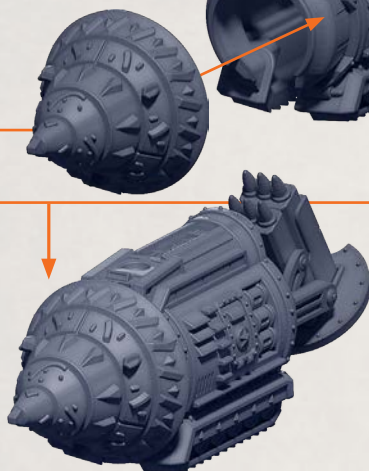
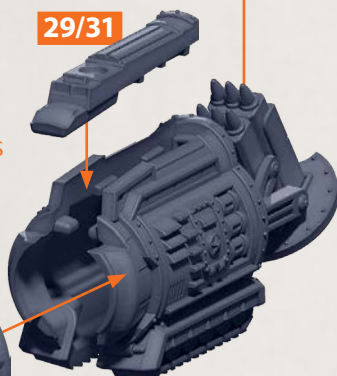
PARTS CAN BE FOUND ON THE **COMMONWEALTH INFANTRY REGIMENT** SPRUES

SEE **PAGE 19** FOR
REAR SECTION
ASSEMBLY



PART 58 MUST
BE IN THE TOP
POSITION AS
SHOWN IN ORDER
FOR THE LOCATORS
TO ALIGN – ALSO
ATTACH DRILL
AFTER **PART 29/31**
IS ATTACHED

29/31



NOTE: RINSE SPRUES IN WARM SOAPY WATER TO REMOVE ANY MOULD RELEASE BEFORE ASSEMBLY



DIKOBRAZ ARTILLERY BORER

PARTS CAN BE FOUND ON THE **COMMONWEALTH INFANTRY REGIMENT** SPRUES



ONE BORER
SHOULD INCLUDE
THE OPEN HATCH
OPTION (ABOVE)
TO DEFINE THE
OFFICER, ALL
OTHERS ARE
CLOSED (BELOW)



SEE **PAGE 7**
FOR ASSEMBLY



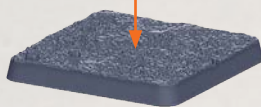
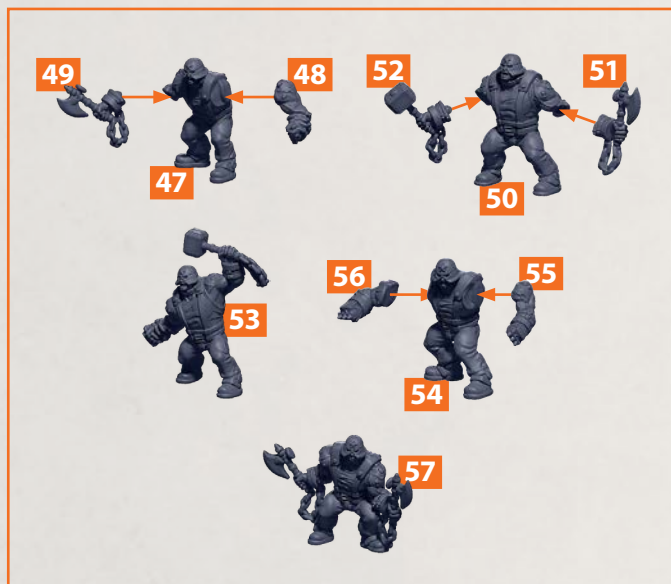
EXAMPLES
SHOWING BOTH
THE OFFICER
(LEFT) AND
STANDARD
MODELS (RIGHT)

NOTE: RINSE SPRUES IN WARM SOAPY WATER TO REMOVE ANY MOULD RELEASE BEFORE ASSEMBLY



AZHDAYA BESERKERS

PARTS CAN BE FOUND ON THE **COMMONWEALTH INFANTRY REGIMENT** SPRUES



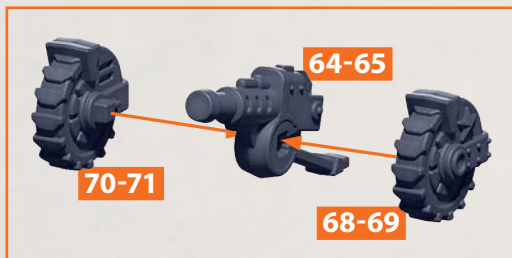
NOTE: ANY COMBINATION OF THE AZHDAYA BESERKERS CAN BE ADDED TO THE STANDARD BASES

NOTE: RINSE SPRUES IN WARM SOAPY WATER TO REMOVE ANY MOULD RELEASE BEFORE ASSEMBLY



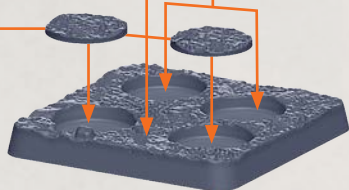
GOBYATA FIELD GUNS

PARTS CAN BE FOUND ON THE **COMMONWEALTH INFANTRY REGIMENT** SPRUES

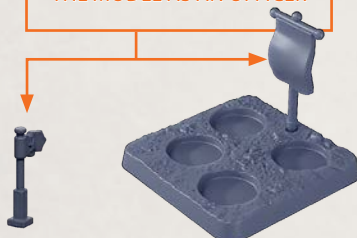


BLANK STANDS CAN BE ADDED TO BASES TO FILL SPACES NOT OCCUPIED BY A FIGURE WHICH, IN TURN, IS USED TO OCCUPY THE GUN

SUGGESTION: ANY COMBINATION OF TWO TROOPS SHOULD BE ADDED TO THE OPEN SLOTS



THE OFFICER BASE CAN BE PLACED ON A **PENNANT FLAG BASE** OR HAVE A **FLAG ATTACHED (SEE PAGE 1)** IN ORDER TO FURTHER DEFINE THE MODEL AS AN OFFICER

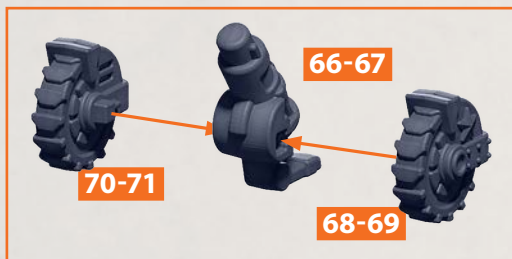


NOTE: RINSE SPRUES IN WARM SOAPY WATER TO REMOVE ANY MOULD RELEASE BEFORE ASSEMBLY



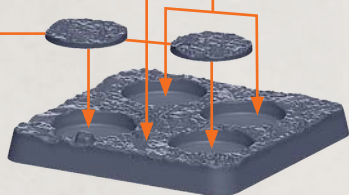
TRYASTI SEISMIC MORTARS

PARTS CAN BE FOUND ON THE **COMMONWEALTH INFANTRY REGIMENT** SPRUES

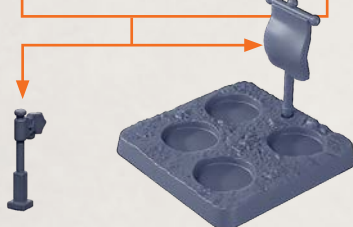


BLANK STANDS CAN BE ADDED TO BASES TO FILL SPACES NOT OCCUPIED BY A FIGURE WHICH, IN TURN, IS USED TO OCCUPY THE GUN

SUGGESTION: ANY COMBINATION OF TWO TROOPS SHOULD BE ADDED TO THE OPEN SLOTS



THE OFFICER BASE CAN BE PLACED ON A **PENNANT FLAG BASE** OR HAVE A **FLAG ATTACHED** (SEE PAGE 1) IN ORDER TO FURTHER DEFINE THE MODEL AS AN OFFICER



NOTE: RINSE SPRUES IN WARM
SOAPY WATER TO REMOVE ANY
MOULD RELEASE BEFORE ASSEMBLY



SUBTERRANEAN MARKERS

PARTS CAN BE FOUND ON THE **COMMONWEALTH INFANTRY REGIMENT** SPRUES

