

NOTE: RINSE SPRUES IN WARM SOAPY WATER TO REMOVE ANY MOULD RELEASE BEFORE ASSEMBLY



OFFICER FLAGS

FLAG PARTS CAN BE FOUND ACROSS VARIOUS ARMOURED CLASH SPRUES AND THE BASES SPRUE

THERE ARE VARIOUS FLAG OPTIONS ACROSS ARMOURED CLASH SPRUES USED TO DEFINE LEADER MODELS WITHIN UNITS

ARMOURED CLASH SPRUES WILL CONTAIN VARIOUS OPTIONS FOR THE OFFICER'S FLAG, THESE CAN BE APPLIED TO A SUITABLE AREA ON ANY MODEL NOT SITUATED ON A BASE



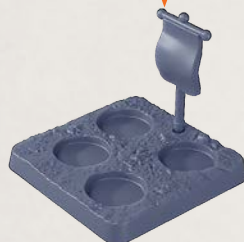
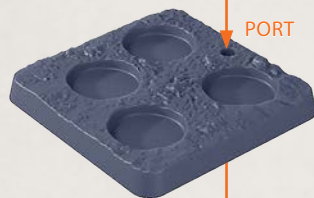
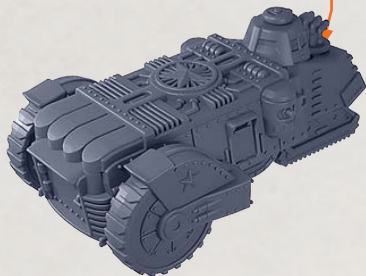
ON THE BASES SPRUE YOU WILL FIND A PENNANT FLAG AND BASE THAT INCLUDES A PORT FOR IT



THIS PARTICULAR COMBINATION CAN BE USED WITH UNITS TO DEFINE A MODEL THAT CONTAINS AN OFFICER (PARTICULARLY WITH FIGURES SETS THAT DO NOT CONTAIN A FLAG BEARER)



PORT



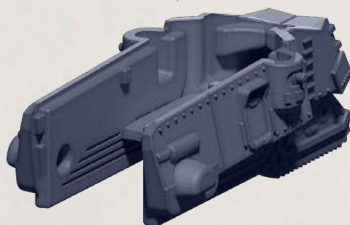
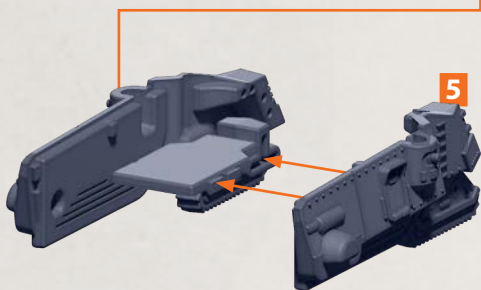
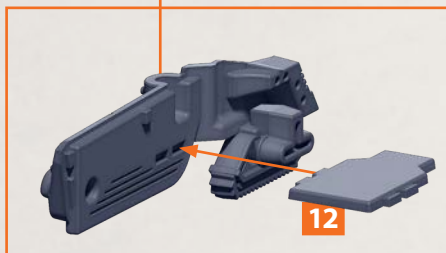
NOTE: RINSE SPRUES IN WARM SOAPY WATER TO REMOVE ANY MOULD RELEASE BEFORE ASSEMBLY



IMPORTANT: PLEASE READ THROUGH ALL THE ASSEMBLY GUIDE BEFORE CHOOSING YOUR BUILD OPTIONS AS SOME MODELS SHARE COMPONENTS

MATRYONA HEAVY TRANSPORTS AND OMSK CRYO TRANSPORTS BODY BUILD

PARTS CAN BE FOUND ON THE COMMONWEALTH HEAVY REGIMENT SPRUES

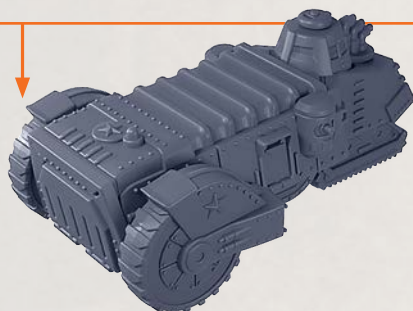
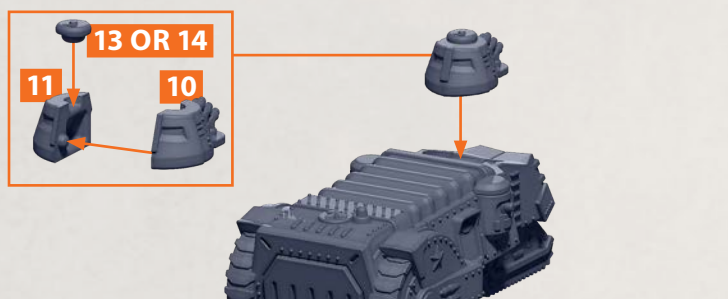
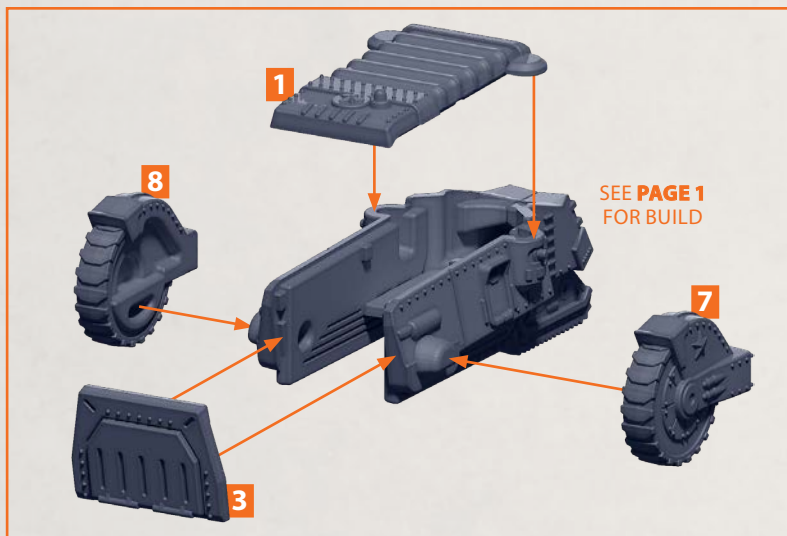


NOTE: RINSE SPRUES IN WARM SOAPY WATER TO REMOVE ANY MOULD RELEASE BEFORE ASSEMBLY



MATRYONA HEAVY TRANSPORTS

PARTS CAN BE FOUND ON THE **COMMONWEALTH HEAVY REGIMENT** SPRUES

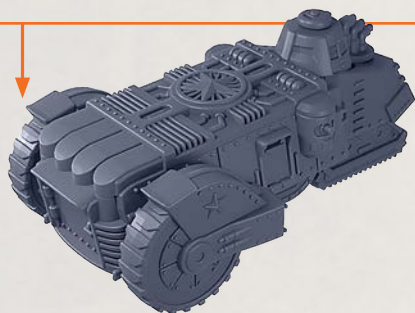
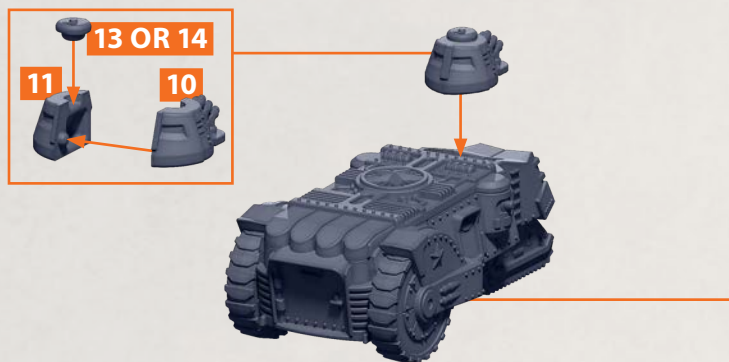
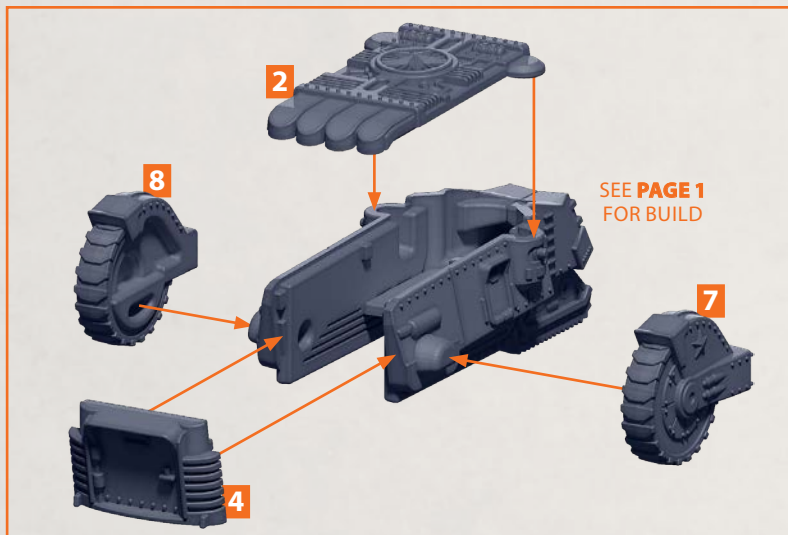


NOTE: RINSE SPRUES IN WARM SOAPY WATER TO REMOVE ANY MOULD RELEASE BEFORE ASSEMBLY



OMSK CRYO TRANSPORTS

PARTS CAN BE FOUND ON THE **COMMONWEALTH HEAVY REGIMENT** SPRUES

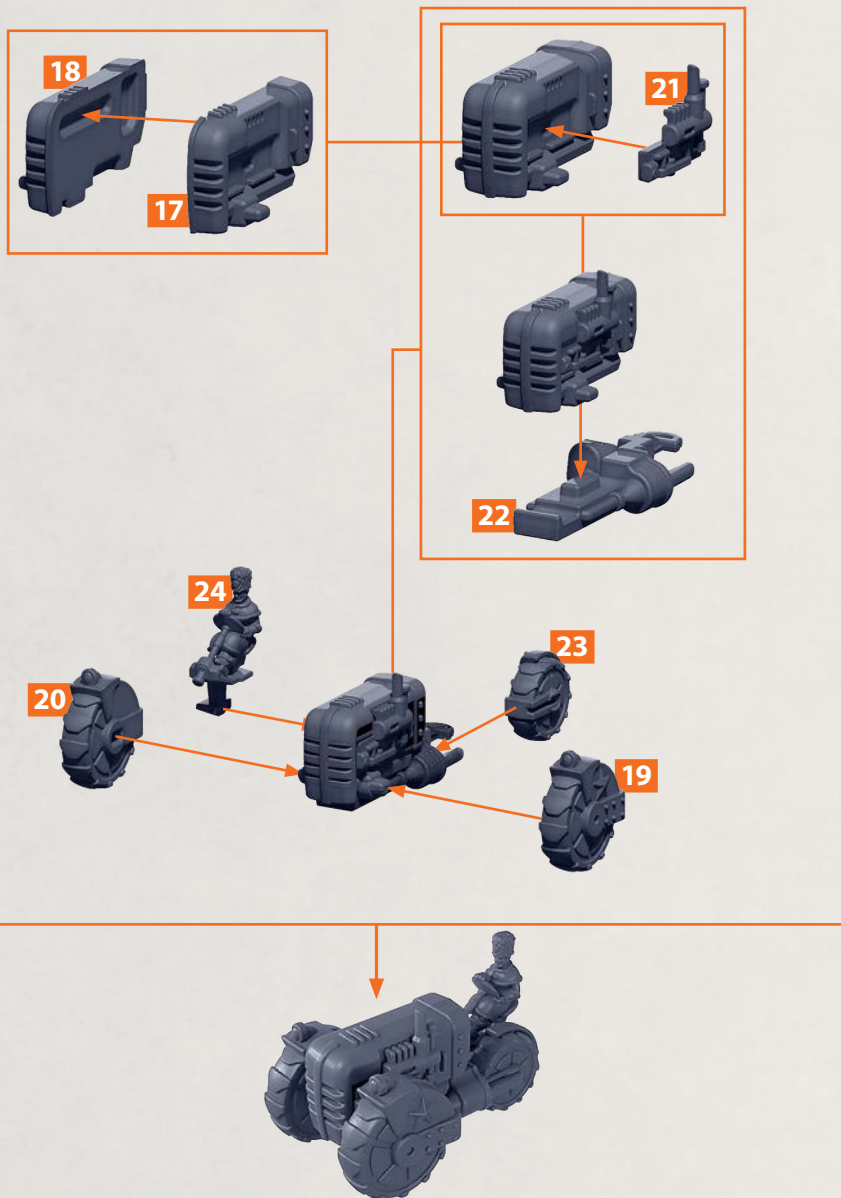


NOTE: RINSE SPRUES IN WARM SOAPY WATER TO REMOVE ANY MOULD RELEASE BEFORE ASSEMBLY



GERLACH GUN TRACTORS

PARTS CAN BE FOUND ON THE **COMMONWEALTH HEAVY REGIMENT** SPRUES

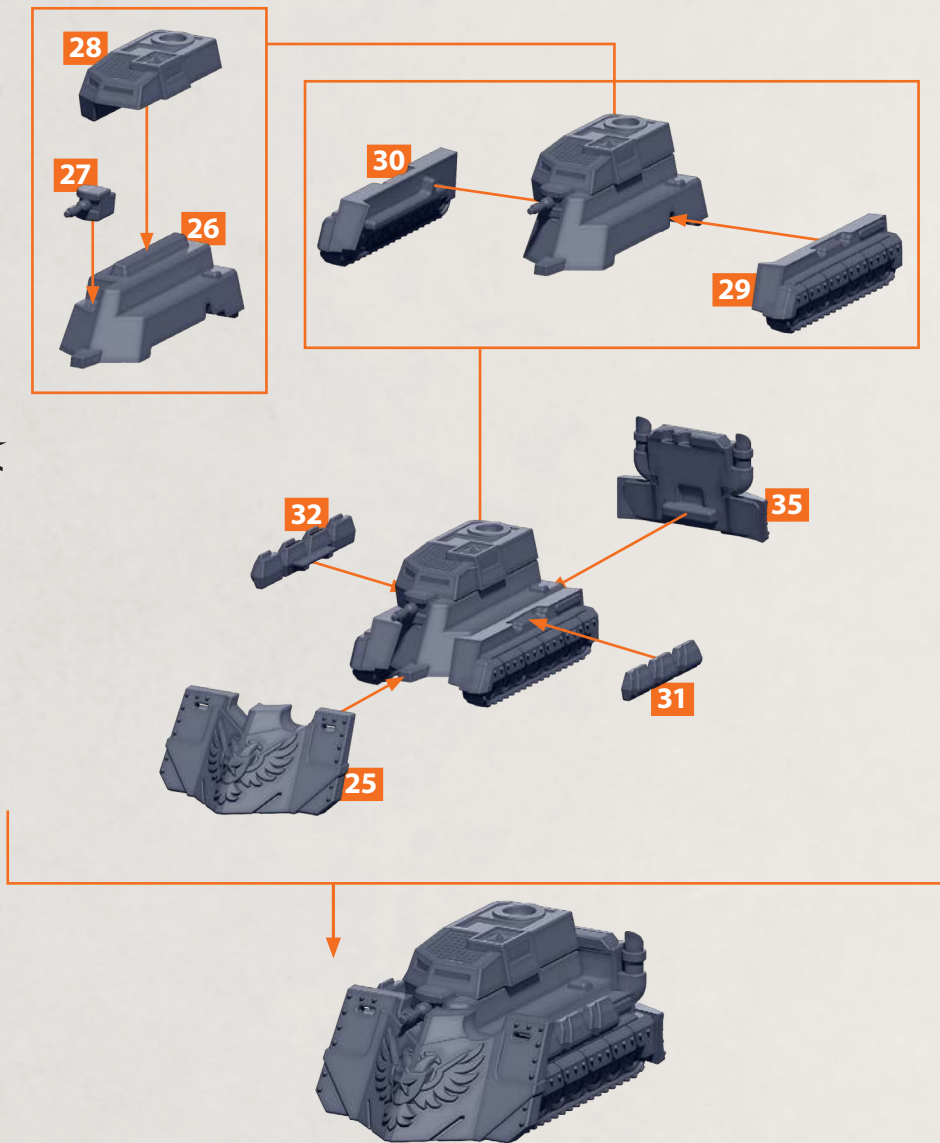


NOTE: RINSE SPRUES IN WARM SOAPY WATER TO REMOVE ANY MOULD RELEASE BEFORE ASSEMBLY



MINSK RAIL DESTROYERS AND VILNIUS SIEGE TANKS BODY BUILD

PARTS CAN BE FOUND ON THE **COMMONWEALTH HEAVY REGIMENT** SPRUES

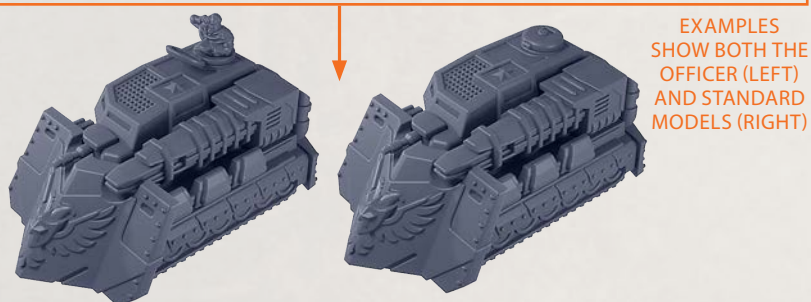
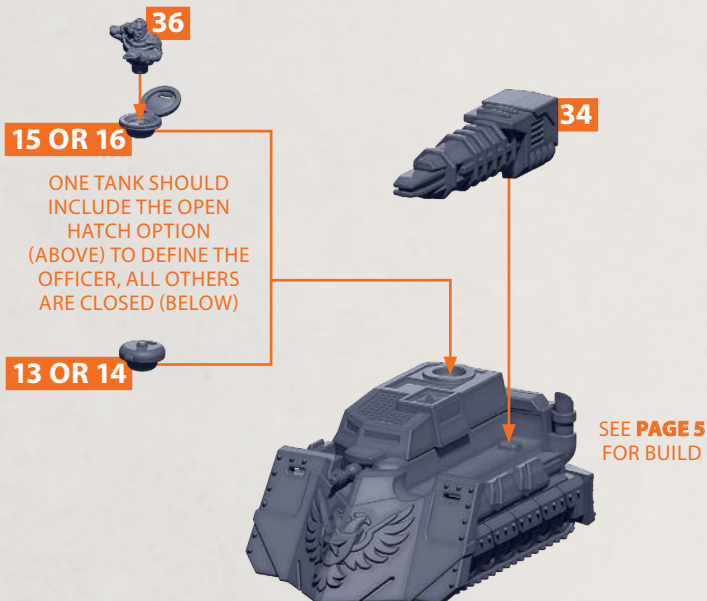


NOTE: RINSE SPRUES IN WARM SOAPY WATER TO REMOVE ANY MOULD RELEASE BEFORE ASSEMBLY



MINSK RAIL DESTROYERS

PARTS CAN BE FOUND ON THE COMMONWEALTH HEAVY REGIMENT SPRUES

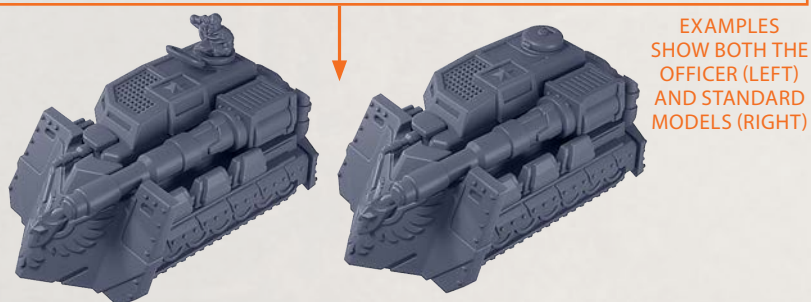
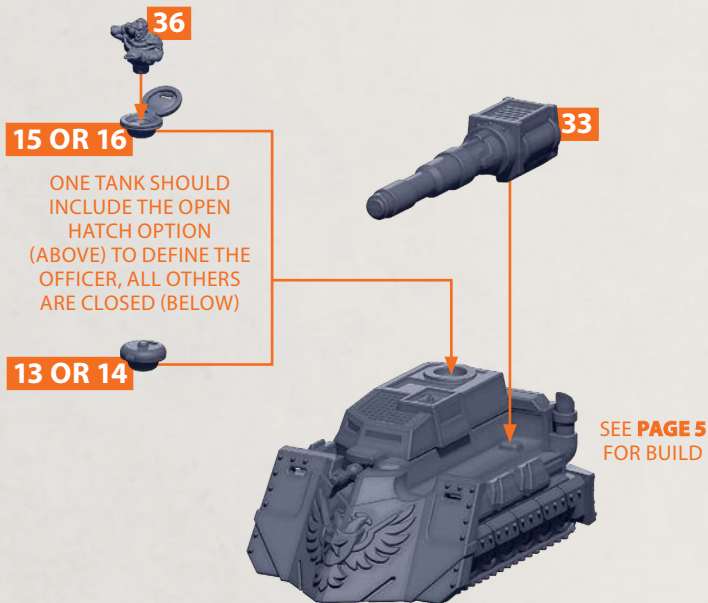


NOTE: RINSE SPRUES IN WARM SOAPY WATER TO REMOVE ANY MOULD RELEASE BEFORE ASSEMBLY



VILNIUS SIEGE TANKS

PARTS CAN BE FOUND ON THE **COMMONWEALTH HEAVY REGIMENT** SPRUES



NOTE: RINSE SPRUES IN WARM SOAPY WATER TO REMOVE ANY MOULD RELEASE BEFORE ASSEMBLY



BURAN CRYO TROOPERS

PARTS CAN BE FOUND ON THE **COMMONWEALTH HEAVY REGIMENT** SPRUES



61

NOTE: ONE MODEL MUST INCLUDE THE OFFICER (PART 61)



53



54



55



56

ANY COMBINATION OF THE BURAN CRYO TROOPERS



57



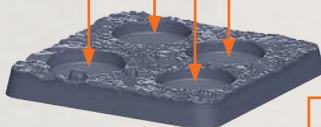
58



59

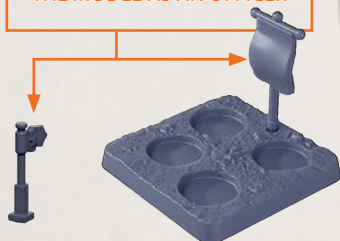


60



EXAMPLES SHOW BOTH THE OFFICER MODEL (LEFT) AND STANDARD MODELS (RIGHT)

THE OFFICER BASE CAN BE PLACED ON A **PENNANT FLAG BASE** OR **HAVE A FLAG ATTACHED** (SEE PAGE 1) IN ORDER TO FURTHER DEFINE THE MODEL AS AN OFFICER



*IF USING THE BURAN OFFICER FROM A SPRUE THEN ONE OF THE STANDARD BURAN TROOPS WILL NEED TO BE SUBSTITUTED

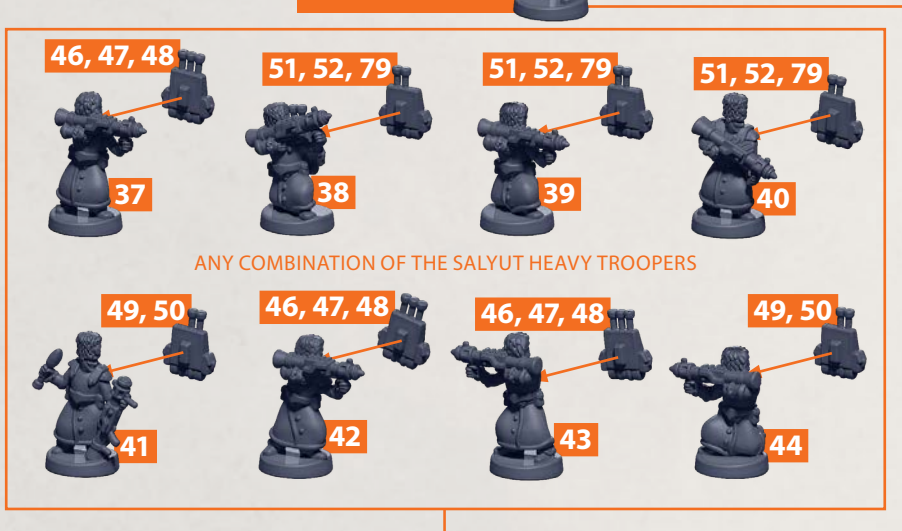
NOTE: RINSE SPRUES IN WARM SOAPY WATER TO REMOVE ANY MOULD RELEASE BEFORE ASSEMBLY



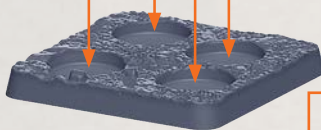
SALYUT HEAVY TROOPERS

PARTS CAN BE FOUND ON THE **COMMONWEALTH HEAVY REGIMENT** SPRUES

NOTE: ONE MODEL MUST INCLUDE THE OFFICER (PART 45)

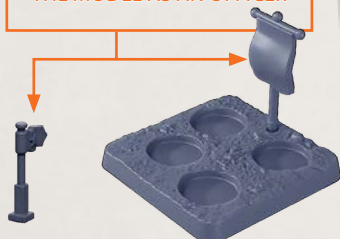


ANY COMBINATION OF THE SALYUT HEAVY TROOPERS



EXAMPLES SHOW BOTH THE OFFICER MODEL (LEFT) AND STANDARD MODELS (RIGHT)

THE OFFICER BASE CAN BE PLACED ON A **PENNANT FLAG BASE** OR HAVE A **FLAG ATTACHED** (SEE PAGE 1) IN ORDER TO FURTHER DEFINE THE MODEL AS AN OFFICER

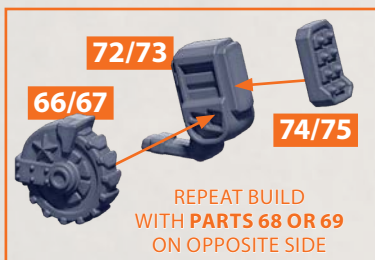


*IF USING THE SALYUT OFFICER FROM A SPRUE THEN ONE OF THE STANDARD SALYUT TROOPS WILL NEED TO BE SUBSTITUTED

NOTE: RINSE SPRUES IN WARM SOAPY WATER TO REMOVE ANY MOULD RELEASE BEFORE ASSEMBLY

MOLNIYA FLAK GUNS

PARTS CAN BE FOUND ON THE **COMMONWEALTH HEAVY REGIMENT** SPRUES

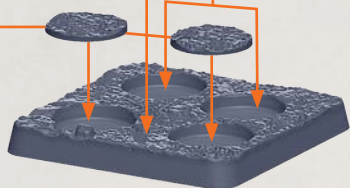


BLANK STANDS CAN BE ADDED TO BASES TO FILL SPACES NOT OCCUPIED BY A FIGURE WHICH, IN TURN, IS USED TO OCCUPY THE GUN

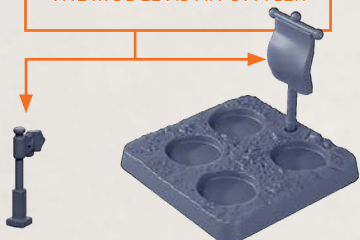


180°
ROTATED

SUGGESTION: ANY COMBINATION OF TWO TROOPS SHOULD BE ADDED TO THE OPEN SLOTS



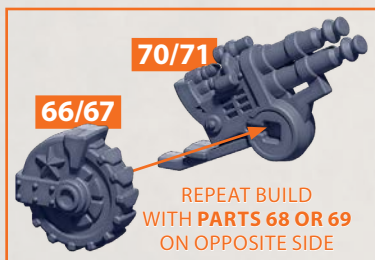
THE OFFICER BASE CAN BE PLACED ON A **PENNANT FLAG BASE** OR **HAVE A FLAG ATTACHED (SEE PAGE 1)** IN ORDER TO FURTHER DEFINE THE MODEL AS AN OFFICER



NOTE: RINSE SPRUES IN WARM SOAPY WATER TO REMOVE ANY MOULD RELEASE BEFORE ASSEMBLY

KRIO ROCKET BATTERIES

PARTS CAN BE FOUND ON THE **COMMONWEALTH HEAVY REGIMENT SPRUES**



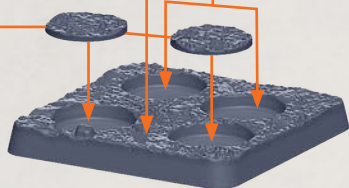
BLANK STANDS CAN BE ADDED TO BASES TO FILL SPACES NOT OCCUPIED BY A FIGURE WHICH, IN TURN, IS USED TO OCCUPY THE GUN



180°
ROTATED

An arrow indicates that the assembled gun barrel should be rotated 180 degrees.

SUGGESTION: ANY COMBINATION OF TWO TROOPS SHOULD BE ADDED TO THE OPEN SLOTS



THE OFFICER BASE CAN BE PLACED ON A **PENNANT FLAG BASE** OR **HAVE A FLAG ATTACHED (SEE PAGE 1)** IN ORDER TO FURTHER DEFINE THE MODEL AS AN OFFICER

