

**NOTE: RINSE SPRUES IN WARM SOAPY WATER TO REMOVE ANY MOULD RELEASE BEFORE ASSEMBLY**



## OFFICER FLAGS

FLAG PARTS CAN BE FOUND ACROSS **VARIOUS ARMoured CLASH** SPRUES AND THE **BASES** SPRUE

**THERE ARE VARIOUS FLAG OPTIONS ACROSS ARMoured CLASH SPRUES USED TO DEFINE LEADER MODELS WITHIN UNITS**

**ARMoured CLASH** SPRUES WILL CONTAIN VARIOUS OPTIONS FOR THE OFFICER'S FLAG, THESE CAN BE APPLIED TO A SUITABLE AREA ON ANY MODEL NOT SITUATED ON A BASE



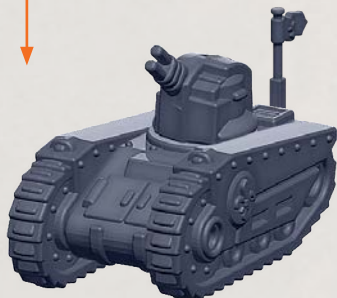
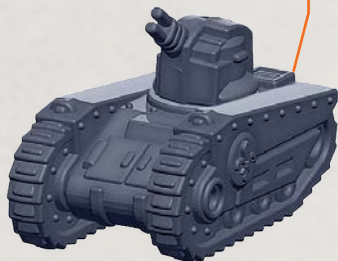
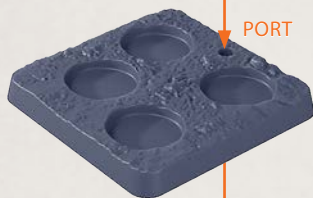
ON THE **BASES** SPRUE YOU WILL FIND A PENNANT FLAG AND BASE THAT INCLUDES A PORT FOR IT



THIS PARTICULAR COMBINATION CAN BE USED WITH UNITS TO DEFINE A MODEL THAT CONTAINS AS AN OFFICER (PARTICULARLY WITH FIGURES SETS THAT DO NOT CONTAIN A FLAG BEARER)



PORT



**NOTE:** RINSE SPRUES IN WARM  
SOAPY WATER TO REMOVE ANY  
MOULD RELEASE BEFORE ASSEMBLY

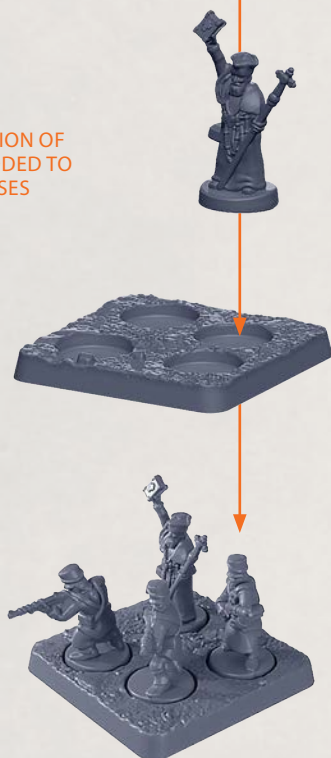


## PRIESTS (LIGHT)

PARTS CAN BE FOUND ON **ALLIANCE LIGHT REGIMENT SPRUE**



**NOTE:** ANY COMBINATION OF  
THE PRIESTS CAN BE ADDED TO  
THE STANDARD BASES



\*IF USING A PRIEST FROM A SPRUE THEN ONE OF THE STANDARD TROOPS WILL NEED TO BE SUBSTITUTED

**NOTE: RINSE SPRUES IN WARM SOAPY WATER TO REMOVE ANY MOULD RELEASE BEFORE ASSEMBLY**



## ALPINI RANGERS

PARTS CAN BE FOUND ON THE **ALLIANCE LIGHT REGIMENT** SPRUES

### OPTIONS FOR PRIESTS



62



63

**NOTE: ONE MODEL MUST INCLUDE AN OFFICER (PART 12)**



12



13



14



15



16

ANY COMBINATION OF THE RANGERS CAN BE ADDED TO THE STANDARD BASES



17



18

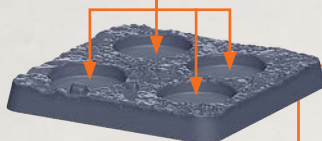


19

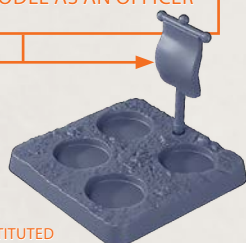


20

EXAMPLES SHOWING BOTH THE OFFICER (*BELOW*) AND STANDARD MODELS (*RIGHT*)



THE OFFICER BASE CAN BE PLACED ON A **PENNANT FLAG** BASE OR HAVE A **FLAG ATTACHED** (SEE PAGE 1) IN ORDER TO FURTHER DEFINE THE MODEL AS AN OFFICER



\*IF USING A PRIEST FROM A SPRUE THEN ONE OF THE STANDARD RANGEMAN WILL NEED TO BE SUBSTITUTED

**NOTE: RINSE SPRUES IN WARM SOAPY WATER TO REMOVE ANY MOULD RELEASE BEFORE ASSEMBLY**



# ORDENANZA MILITIA

PARTS CAN BE FOUND ON THE ALLIANCE LIGHT REGIMENT SPRUES

## OPTIONS FOR PRIESTS



62



63

**NOTE: ONE MODEL MUST INCLUDE THE OFFICER (PART 35) AND THE FLAG BEARER (PART 36)**



35



36



37



38



39



40



41



42



43



44



45



46



47



48



49



50

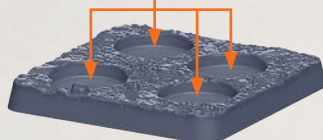


51



52

**NOTE: A PRIEST (PART 62 OR PART 63) CAN BE ADDED TO THE STANDARD BASES**



ANY COMBINATION OF THE ORDENANZA MILITIA CAN BE ADDED TO THE STANDARD BASES



EXAMPLES SHOWING THE OFFICER (LEFT), STANDARD MODELS (MIDDLE) AND THE PRIEST (RIGHT)

\*IF USING A PRIEST FROM A SPRUE THEN ONE OF THE STANDARD SUSAS ORDENANZAS WILL NEED TO BE SUBSTITUTED

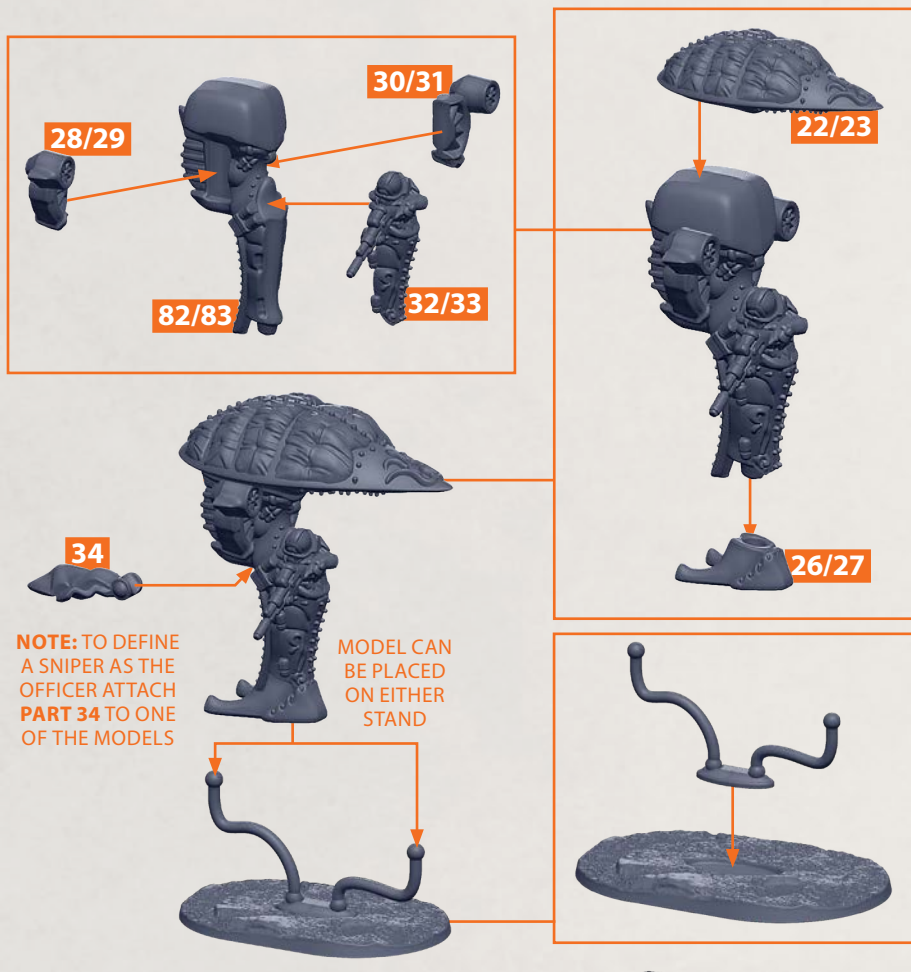


**NOTE: RINSE SPRUES IN WARM SOAPY WATER TO REMOVE ANY MOULD RELEASE BEFORE ASSEMBLY**



## GLOBONAUTA SNIPERS

PARTS CAN BE FOUND ON THE ALLIANCE LIGHT REGIMENT SPRUES



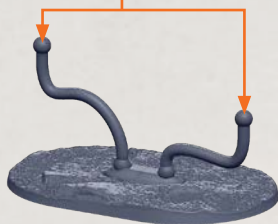
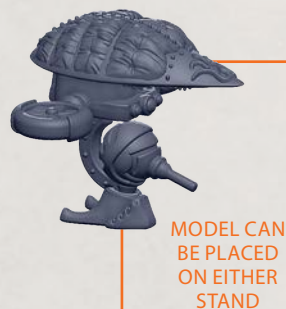
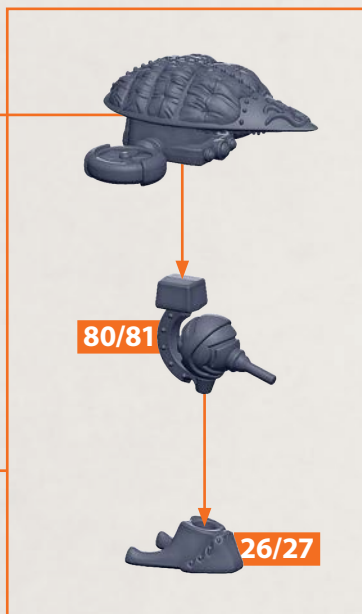
EXAMPLES SHOWING THE OFFICER (LEFT) AND STANDARD MODELS (RIGHT)

**NOTE: RINSE SPRUES IN WARM SOAPY WATER TO REMOVE ANY MOULD RELEASE BEFORE ASSEMBLY**



## AVISPA GYRO-AUTOMATA

PARTS CAN BE FOUND ON THE ALLIANCE LIGHT REGIMENT SPRUES

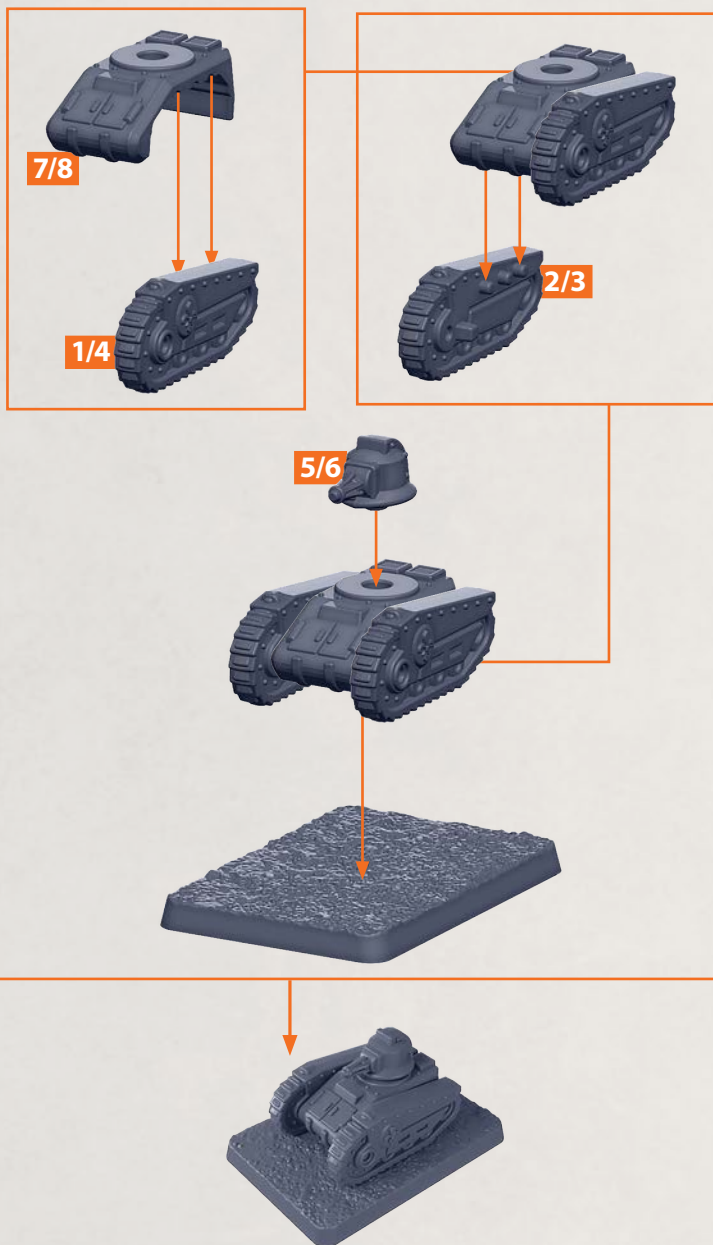


**NOTE: RINSE SPRUES IN WARM  
SOAPY WATER TO REMOVE ANY  
MOULD RELEASE BEFORE ASSEMBLY**



## CHARRETTE ARMoured VEHICLE

PARTS CAN BE FOUND ON THE **ALLIANCE LIGHT REGIMENT** SPRUES

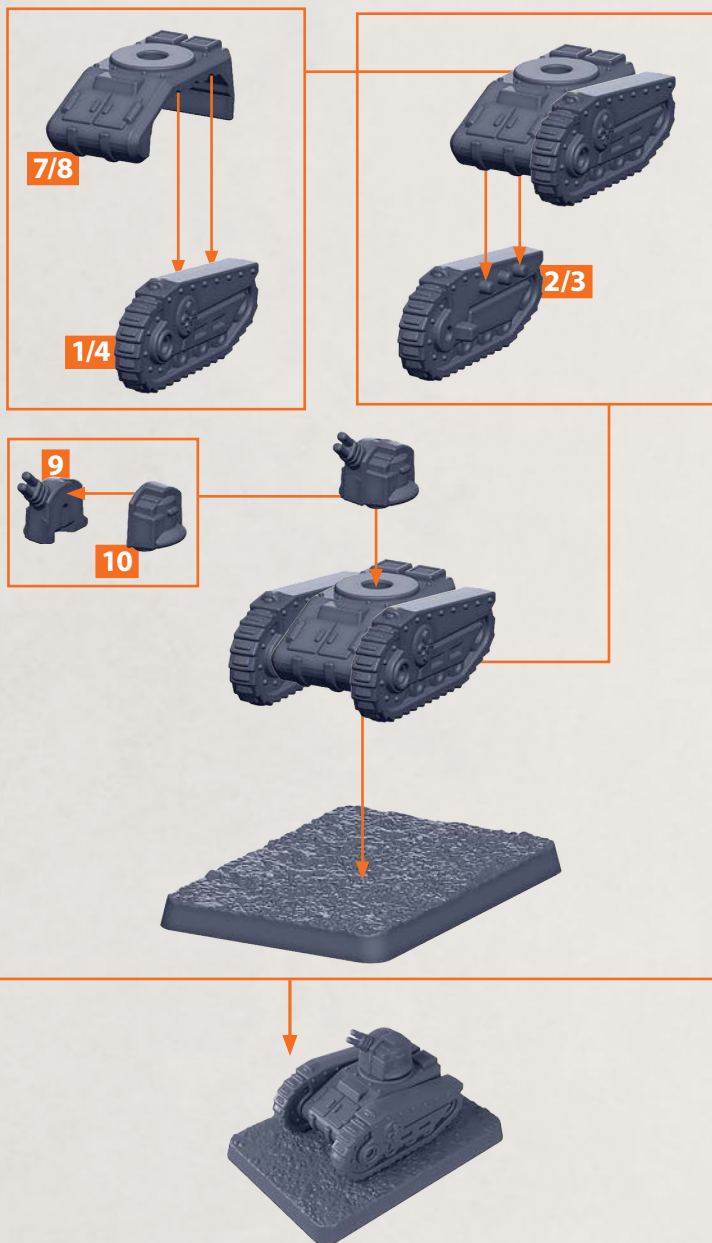


**NOTE: RINSE SPRUES IN WARM  
SOAPY WATER TO REMOVE ANY  
MOULD RELEASE BEFORE ASSEMBLY**



## HELLEQUIN ARMoured VEHICLE

PARTS CAN BE FOUND ON THE ALLIANCE LIGHT REGIMENT SPRUES



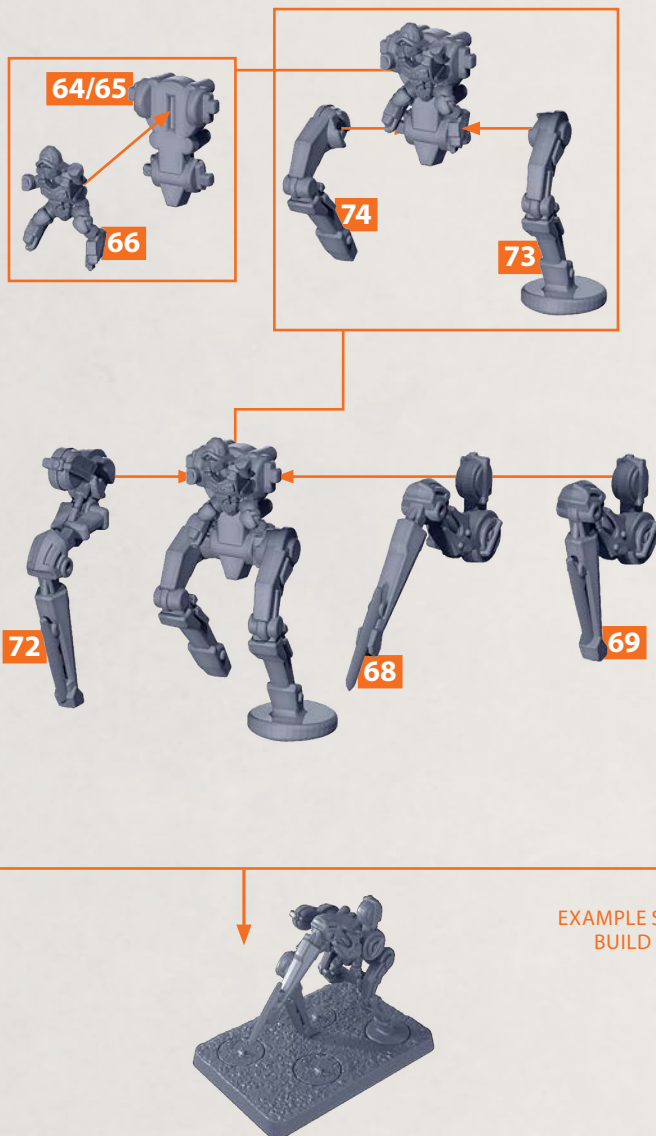


**NOTE: RINSE SPRUES IN WARM SOAPY WATER TO REMOVE ANY MOULD RELEASE BEFORE ASSEMBLY**



## DESTREZA BLADESTRIDERS

PARTS CAN BE FOUND ON THE **ALLIANCE LIGHT REGIMENT** SPRUES

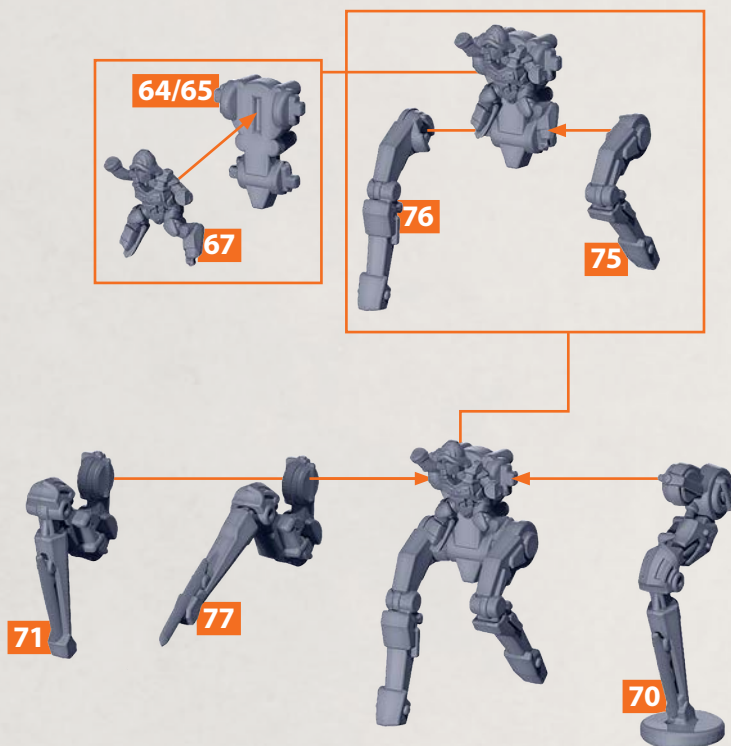


**NOTE: RINSE SPRUES IN WARM SOAPY WATER TO REMOVE ANY MOULD RELEASE BEFORE ASSEMBLY**



## DESTREZA BLADESTRIDERS

PARTS CAN BE FOUND ON THE **ALLIANCE LIGHT REGIMENT** SPRUES



EXAMPLE SHOWS A  
SECOND BUILD OPTION



**NOTE: RINSE SPRUES IN WARM SOAPY WATER TO REMOVE ANY MOULD RELEASE BEFORE ASSEMBLY**



# BECERRILLO WAR DOGS

PARTS CAN BE FOUND ON THE ALLIANCE LIGHT REGIMENT SPRUES

## OPTIONS FOR PRIESTS



62



63

**NOTE: ONE MODEL MUST INCLUDE AN OFFICER (PART 55)**



55

## TROOPS STAND BEHIND THE WAR DOGS



53



54



56



57



58



59



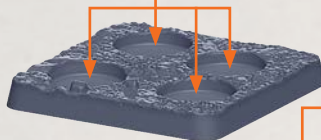
60



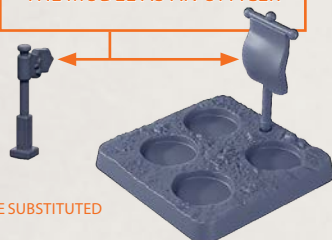
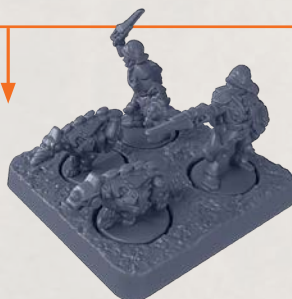
61

**NOTE: ANY COMBINATION OF THE TROOPS CAN BE ADDED TO THE STANDARD BASES**

EXAMPLES SHOWING BOTH THE OFFICER (BELOW) AND STANDARD MODELS (RIGHT)



THE OFFICER BASE CAN BE PLACED ON A **PENNANT FLAG BASE** OR HAVE A **FLAG ATTACHED** (SEE PAGE 1) IN ORDER TO FURTHER DEFINE THE MODEL AS AN OFFICER



\*IF USING A PRIEST FROM A SPRUE THEN ONE OF THE STANDARD TROOPS WILL NEED TO BE SUBSTITUTED