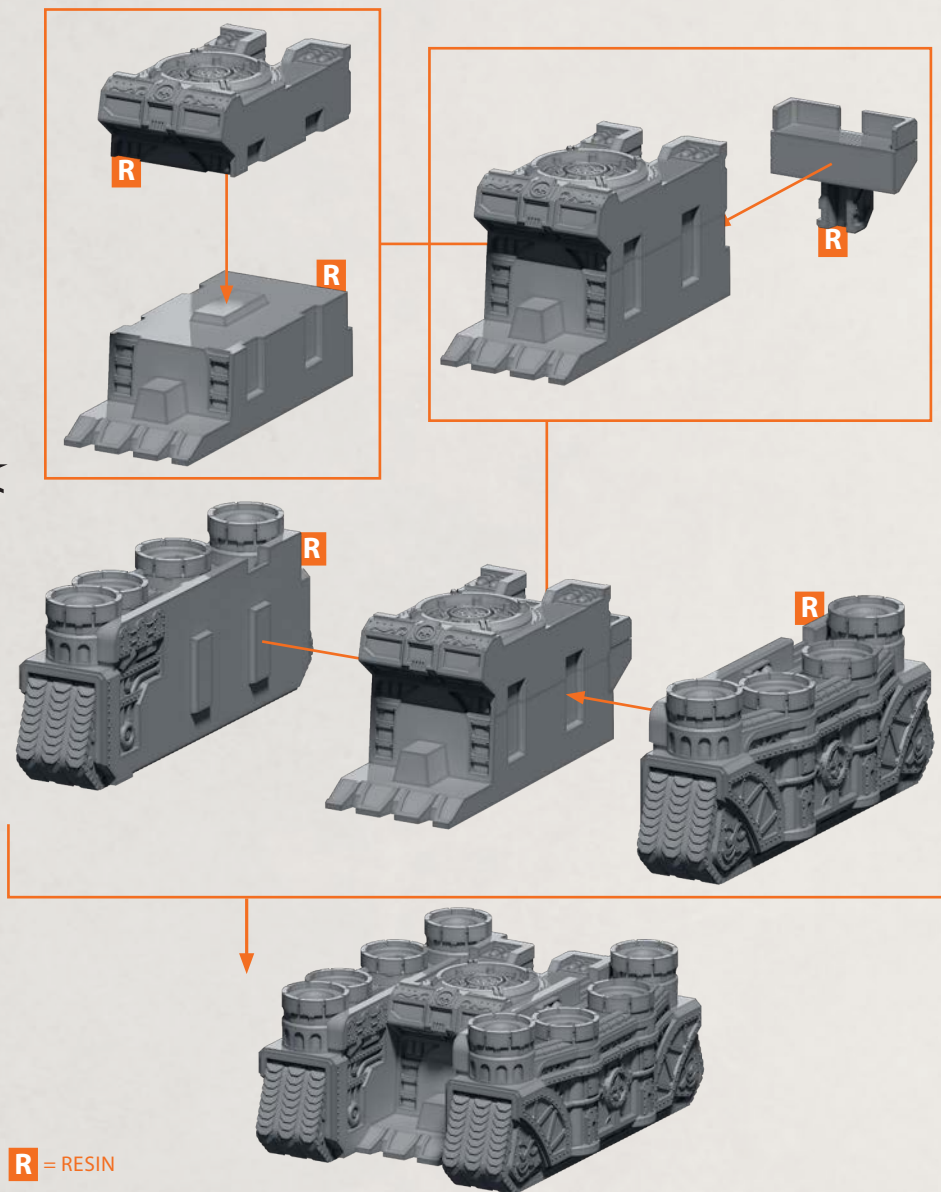


NOTE: RINSE SPRUES IN WARM SOAPY WATER TO REMOVE ANY MOULD RELEASE BEFORE ASSEMBLY



VALENCA LANDSHIP & GHENT LANDFORTRESS BODY ASSEMBLY

PARTS CAN BE FOUND AS RESIN

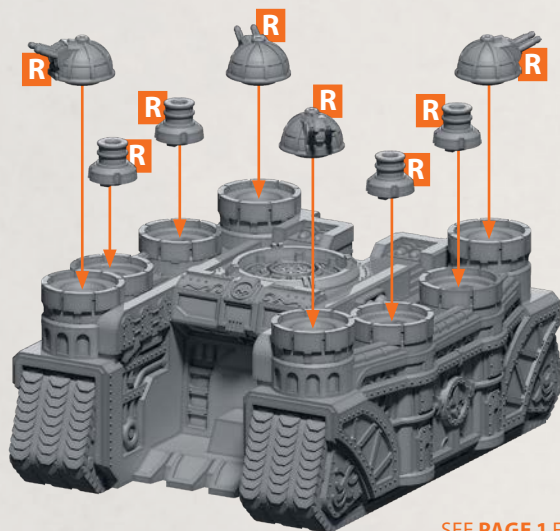


**NOTE: RINSE SPRUES IN WARM
SOAPY WATER TO REMOVE ANY
MOULD RELEASE BEFORE ASSEMBLY**

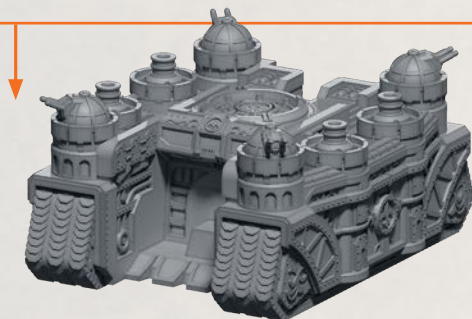


VALENCA LANDSHIP & GHENT LANDFORTRESS BODY ASSEMBLY CONTINUED

PARTS CAN BE FOUND AS RESIN



SEE **PAGE 1** FOR
BODY ASSEMBLY



R = RESIN

NOTE: RINSE SPRUES IN WARM SOAPY WATER TO REMOVE ANY MOULD RELEASE BEFORE ASSEMBLY



VALENCIA LANDSHIP

PARTS CAN BE FOUND AS RESIN

SEE **PAGE 1-2**
FOR ASSEMBLY



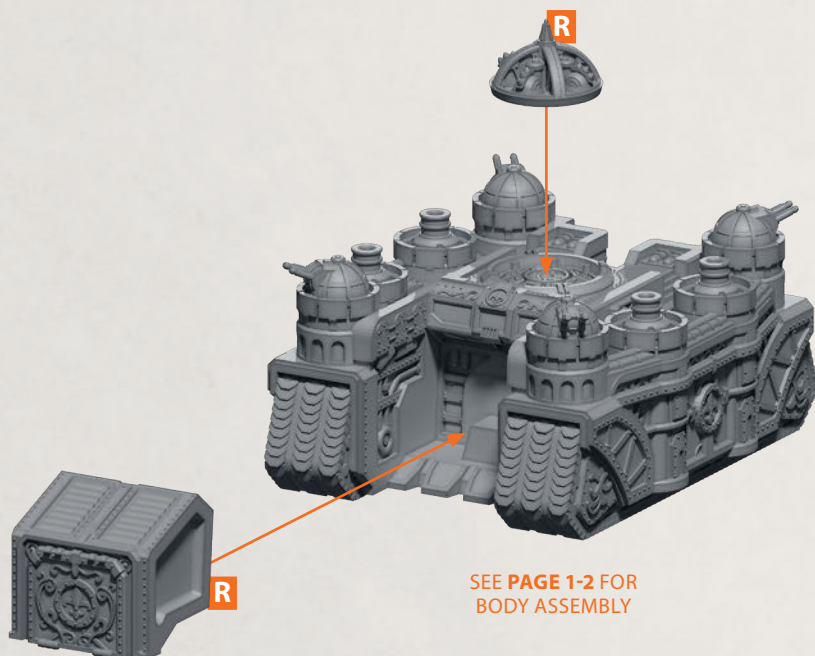
R = RESIN

NOTE: RINSE SPRUES IN WARM SOAPY WATER TO REMOVE ANY MOULD RELEASE BEFORE ASSEMBLY

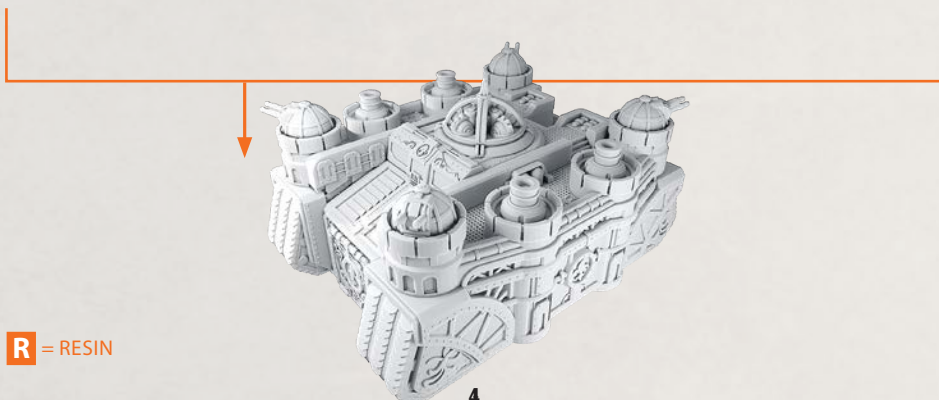


GHENT LANDFORTRESS

PARTS CAN BE FOUND AS RESIN



SEE PAGE 1-2 FOR
BODY ASSEMBLY



R = RESIN

NOTE: RINSE SPRUES IN WARM SOAPY WATER TO REMOVE ANY MOULD RELEASE BEFORE ASSEMBLY



OFFICER FLAGS

FLAG PARTS CAN BE FOUND ACROSS **VARIOUS ARMOURED CLASH** SPRUES AND THE **BASES** SPRUE

THERE ARE VARIOUS FLAG OPTIONS ACROSS ARMOURED CLASH SPRUES USED TO DEFINE LEADER MODELS WITHIN UNITS

ARMOURED CLASH SPRUES WILL CONTAIN VARIOUS OPTIONS FOR THE OFFICER'S FLAG, THESE CAN BE APPLIED TO A SUITABLE AREA ON ANY MODEL NOT SITUATED ON A BASE



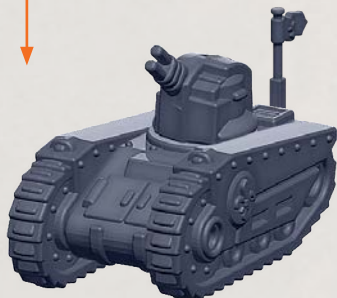
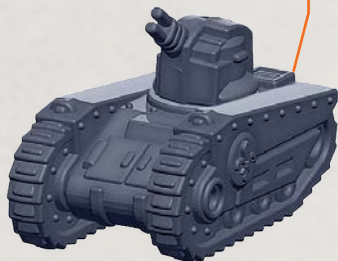
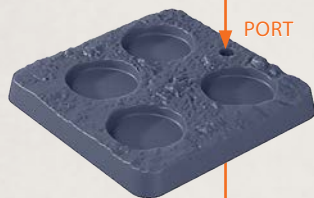
ON THE **BASES** SPRUE YOU WILL FIND A PENNANT FLAG AND BASE THAT INCLUDES A PORT FOR IT



THIS PARTICULAR COMBINATION CAN BE USED WITH UNITS TO DEFINE A MODEL THAT CONTAINS AS AN OFFICER (PARTICULARLY WITH FIGURES SETS THAT DO NOT CONTAIN A FLAG BEARER)



PORT



NOTE: RINSE SPRUES IN WARM SOAPY WATER TO REMOVE ANY MOULD RELEASE BEFORE ASSEMBLY

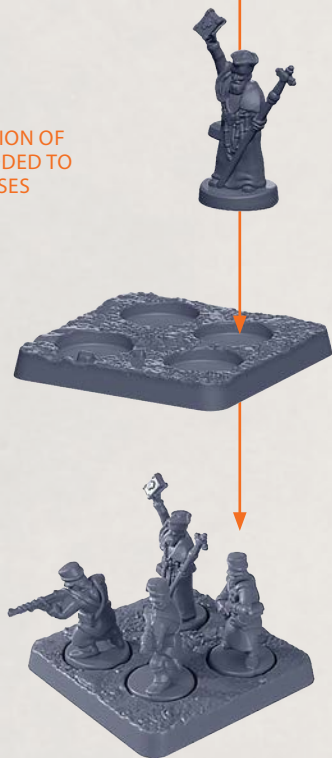


PRIESTS (LIGHT)

PARTS CAN BE FOUND ON **ALLIANCE LIGHT REGIMENT SPRUE**



NOTE: ANY COMBINATION OF
THE PRIESTS CAN BE ADDED TO
THE STANDARD BASES



*IF USING A PRIEST FROM A SPRUE THEN ONE OF THE STANDARD TROOPS WILL NEED TO BE SUBSTITUTED

NOTE: RINSE SPRUES IN WARM SOAPY WATER TO REMOVE ANY MOULD RELEASE BEFORE ASSEMBLY



ALPINI RANGERS

PARTS CAN BE FOUND ON THE ALLIANCE LIGHT REGIMENT SPRUES

OPTIONS FOR PRIESTS



62



63

NOTE: ONE MODEL MUST INCLUDE AN OFFICER (PART 12)



12



13



14



15



16

ANY COMBINATION OF THE RANGERS CAN BE ADDED TO THE STANDARD BASES



17



18

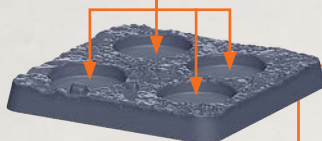


19

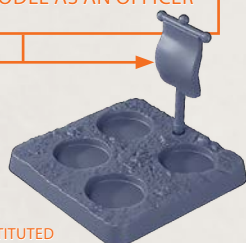


20

EXAMPLES SHOWING BOTH THE OFFICER (*BELOW*) AND STANDARD MODELS (*RIGHT*)



THE OFFICER BASE CAN BE PLACED ON A **PENNANT FLAG BASE** OR HAVE A **FLAG ATTACHED** (SEE PAGE 5) IN ORDER TO FURTHER DEFINE THE MODEL AS AN OFFICER



*IF USING A PRIEST FROM A SPRUE THEN ONE OF THE STANDARD RANGEMAN WILL NEED TO BE SUBSTITUTED

NOTE: RINSE SPRUES IN WARM SOAPY WATER TO REMOVE ANY MOULD RELEASE BEFORE ASSEMBLY



ORDENANZA MILITIA

PARTS CAN BE FOUND ON THE ALLIANCE LIGHT REGIMENT SPRUES

OPTIONS FOR PRIESTS



62



63

NOTE: ONE MODEL MUST INCLUDE THE OFFICER (PART 35) AND THE FLAG BEARER (PART 36)



35

36



37



38



39



40



41



42



43



44



45



46



47



48



49



50

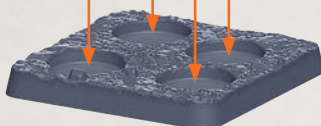


51



52

NOTE: A PRIEST (PART 62 OR PART 63) CAN BE ADDED TO THE STANDARD BASES



ANY COMBINATION OF THE ORDENANZA MILITIA CAN BE ADDED TO THE STANDARD BASES



EXAMPLES SHOWING THE OFFICER (LEFT), STANDARD MODELS (MIDDLE) AND THE PRIEST (RIGHT)

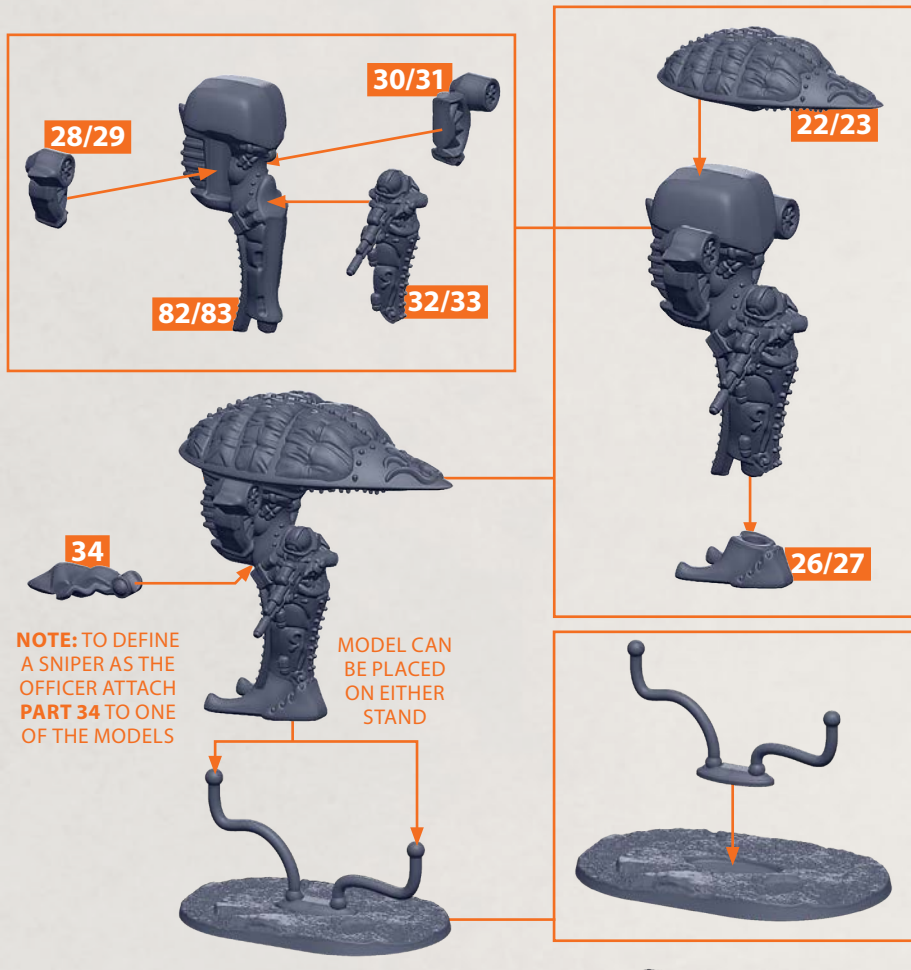
*IF USING A PRIEST FROM A SPRUE THEN ONE OF THE STANDARD SUSAS ORDENANZAS WILL NEED TO BE SUBSTITUTED

NOTE: RINSE SPRUES IN WARM SOAPY WATER TO REMOVE ANY MOULD RELEASE BEFORE ASSEMBLY



GLOBONAUTA SNIPERS

PARTS CAN BE FOUND ON THE ALLIANCE LIGHT REGIMENT SPRUES



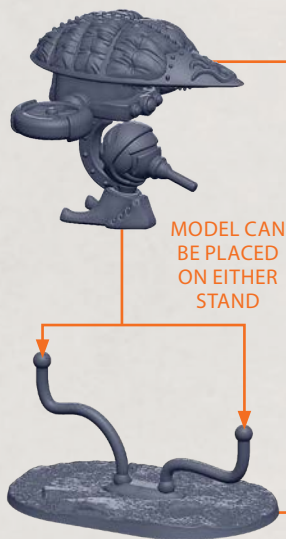
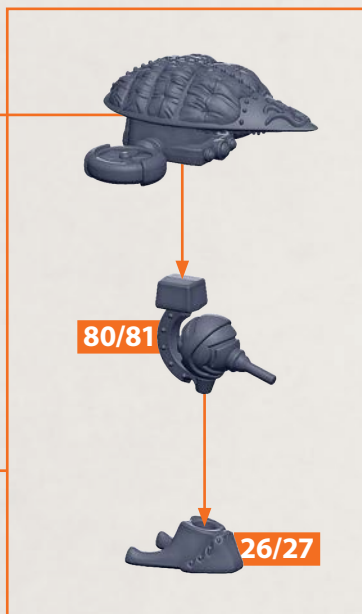
EXAMPLES
SHOWING THE
OFFICER (LEFT)
AND STANDARD
MODELS (RIGHT)

NOTE: RINSE SPRUES IN WARM SOAPY WATER TO REMOVE ANY MOULD RELEASE BEFORE ASSEMBLY



AVISPA GYRO-AUTOMATA

PARTS CAN BE FOUND ON THE **ALLIANCE LIGHT REGIMENT** SPRUES

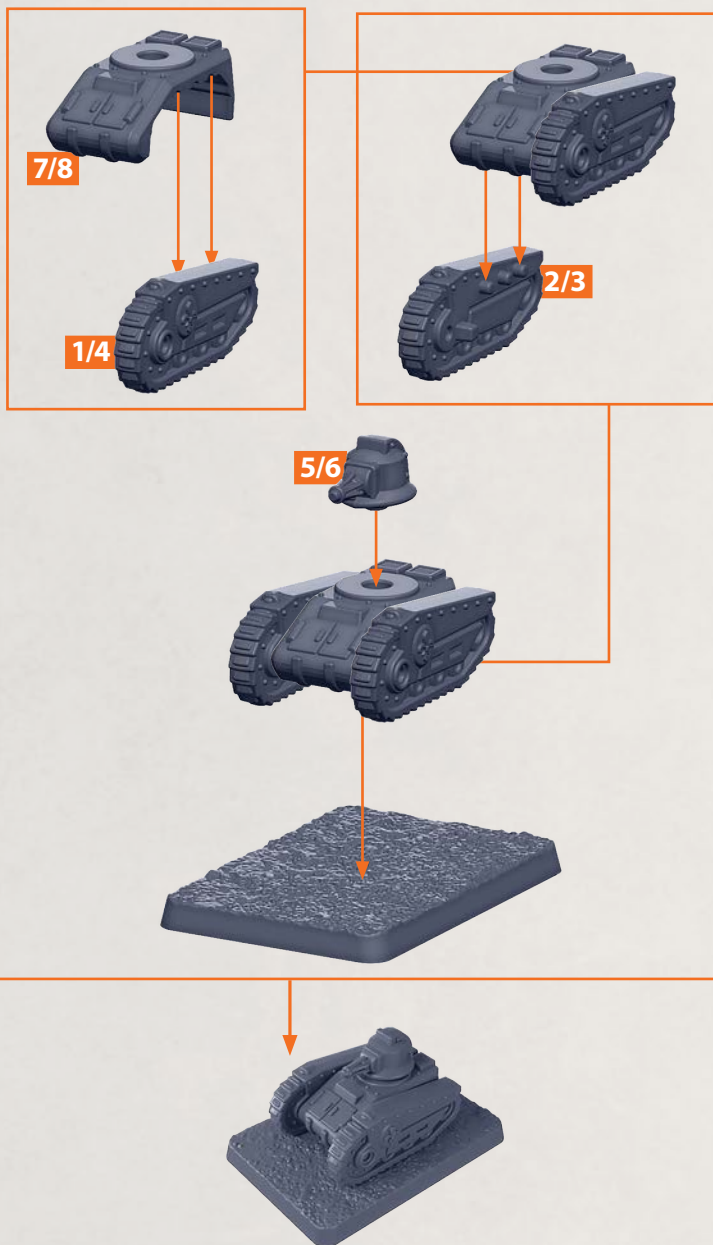


NOTE: RINSE SPRUES IN WARM
SOAPY WATER TO REMOVE ANY
MOULD RELEASE BEFORE ASSEMBLY



CHARRETTE ARMoured VEHICLE

PARTS CAN BE FOUND ON THE **ALLIANCE LIGHT REGIMENT** SPRUES

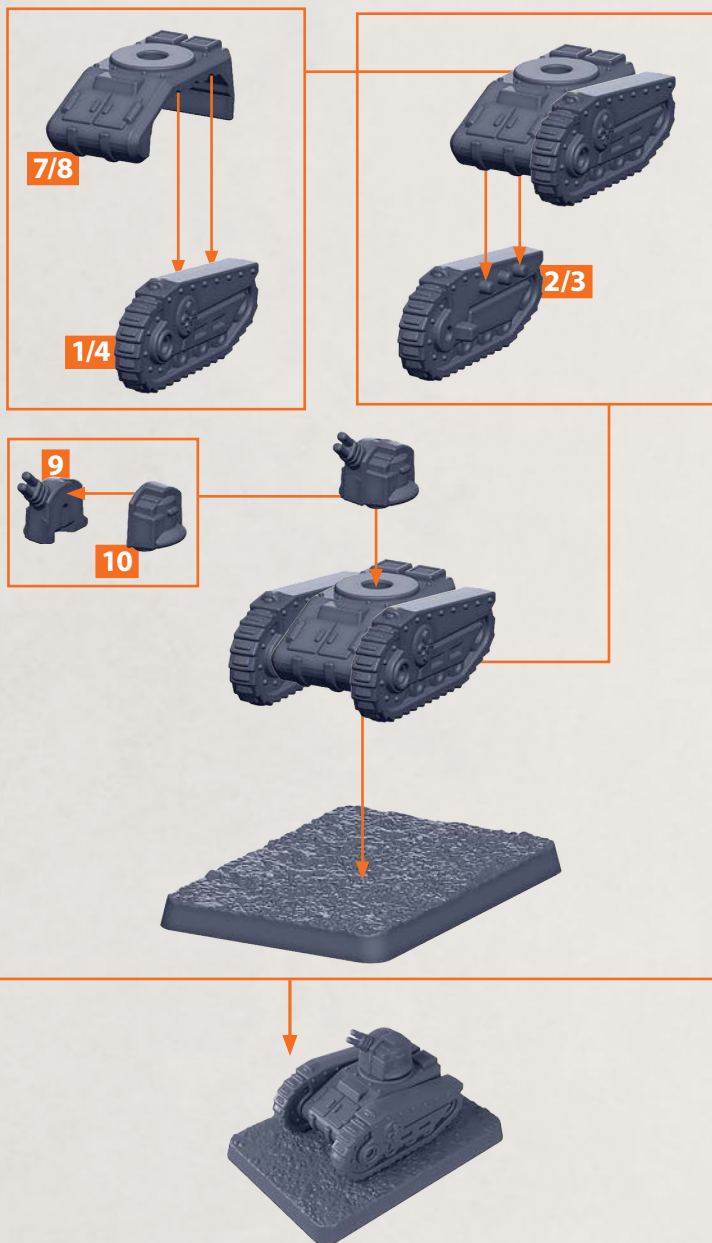


**NOTE: RINSE SPRUES IN WARM
SOAPY WATER TO REMOVE ANY
MOULD RELEASE BEFORE ASSEMBLY**



HELLEQUIN ARMOURED VEHICLE

PARTS CAN BE FOUND ON THE ALLIANCE LIGHT REGIMENT SPRUES

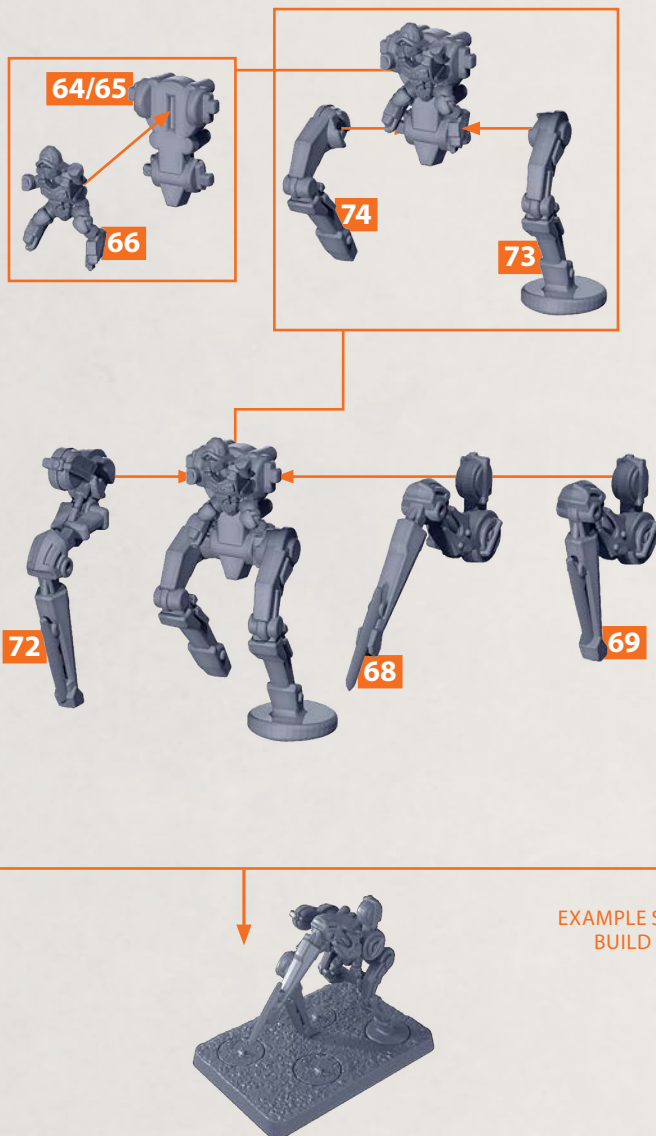


NOTE: RINSE SPRUES IN WARM SOAPY WATER TO REMOVE ANY MOULD RELEASE BEFORE ASSEMBLY



DESTREZA BLADESTRIDERS

PARTS CAN BE FOUND ON THE **ALLIANCE LIGHT REGIMENT** SPRUES

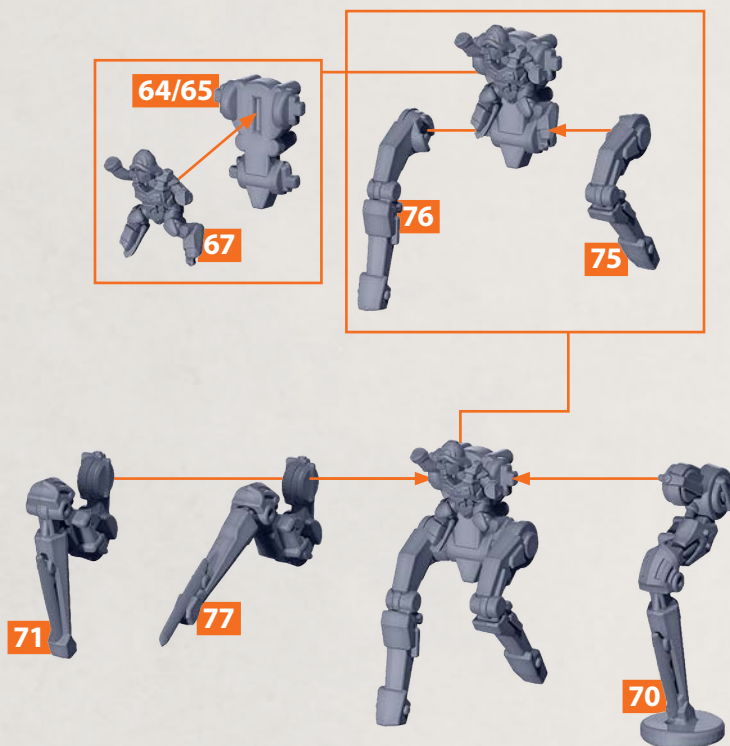


NOTE: RINSE SPRUES IN WARM SOAPY WATER TO REMOVE ANY MOULD RELEASE BEFORE ASSEMBLY



DESTREZA BLADESTRIDERS

PARTS CAN BE FOUND ON THE **ALLIANCE LIGHT REGIMENT** SPRUES



EXAMPLE SHOWS A
SECOND BUILD OPTION



NOTE: RINSE SPRUES IN WARM SOAPY WATER TO REMOVE ANY MOULD RELEASE BEFORE ASSEMBLY



BECERRILLO WAR DOGS

PARTS CAN BE FOUND ON THE ALLIANCE LIGHT REGIMENT SPRUES

OPTIONS FOR PRIESTS



62



63



55

NOTE: ONE MODEL MUST INCLUDE AN OFFICER (PART 55)

TROOPS STAND BEHIND THE WAR DOGS



53



54



56



57



58



59



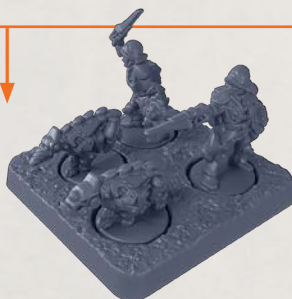
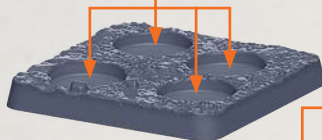
60



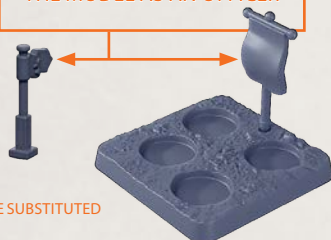
61

NOTE: ANY COMBINATION OF THE TROOPS CAN BE ADDED TO THE STANDARD BASES

EXAMPLES SHOWING BOTH THE OFFICER (BELOW) AND STANDARD MODELS (RIGHT)



THE OFFICER BASE CAN BE PLACED ON A **PENNANT FLAG BASE** OR HAVE A **FLAG ATTACHED** (SEE PAGE 5) IN ORDER TO FURTHER DEFINE THE MODEL AS AN OFFICER



*IF USING A PRIEST FROM A SPRUE THEN ONE OF THE STANDARD TROOPS WILL NEED TO BE SUBSTITUTED

NOTE: RINSE SPRUES IN WARM SOAPY WATER TO REMOVE ANY MOULD RELEASE BEFORE ASSEMBLY



PRIESTS (ASSAULT)

PARTS CAN BE FOUND ON **ALLIANCE ASSAULT REGIMENT SPRUE**



NOTE: ANY COMBINATION OF THE PRIESTS CAN BE ADDED TO THE STANDARD BASES



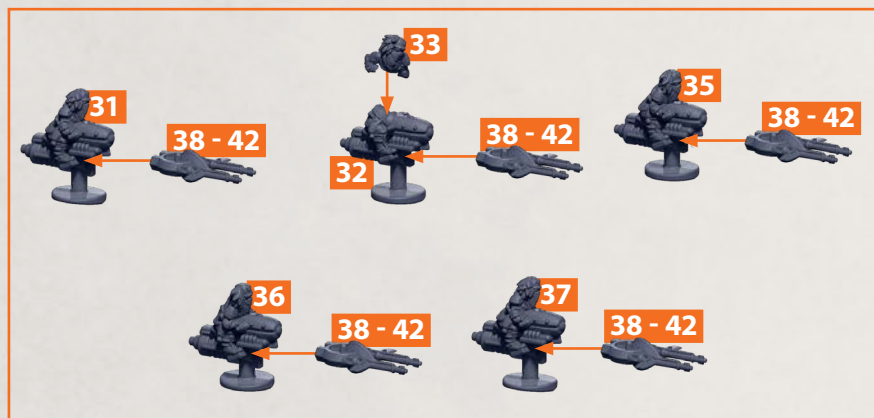
*IF USING A PRIEST FROM A SPRUE THEN ONE OF THE STANDARD TROOPS WILL NEED TO BE SUBSTITUTED

NOTE: RINSE SPRUES IN WARM SOAPY WATER TO REMOVE ANY MOULD RELEASE BEFORE ASSEMBLY



BERSAGLIERI OUTRIDERS

PARTS CAN BE FOUND ON THE ALLIANCE ASSAULT REGIMENT SPRUES



BLANK STANDS CAN BE ADDED TO BASES TO FILL SPACES NOT OCCUPIED BY AN OUTRIDER

EXAMPLES SHOWING BOTH THE OFFICER (BELOW) AND STANDARD MODELS (RIGHT)

THE OFFICER BASE CAN HAVE A FLAG ATTACHED (SEE PAGE 5) IN ORDER TO FURTHER DEFINE THE MODEL AS AN OFFICER

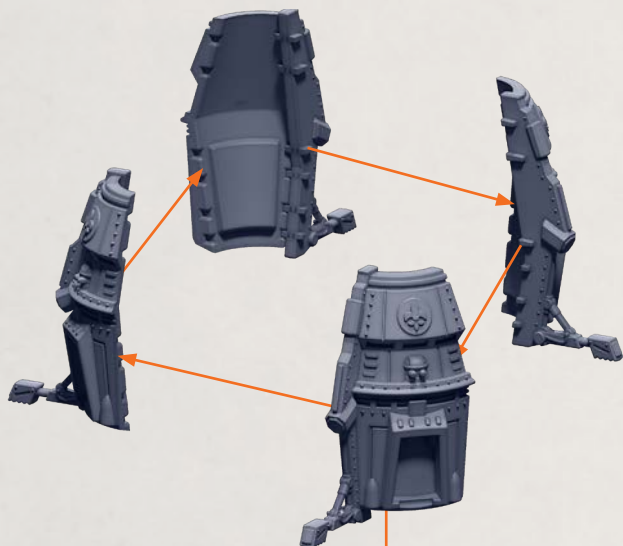


NOTE: RINSE SPRUES IN WARM
SOAPY WATER TO REMOVE ANY
MOULD RELEASE BEFORE ASSEMBLY



FRENCH DROP CAPSULE & FRENCH DROP FIREBASE BODY ASSEMBLY

PARTS CAN BE FOUND ON THE **ALLIANCE ASSAULT REGIMENT** SPRUES

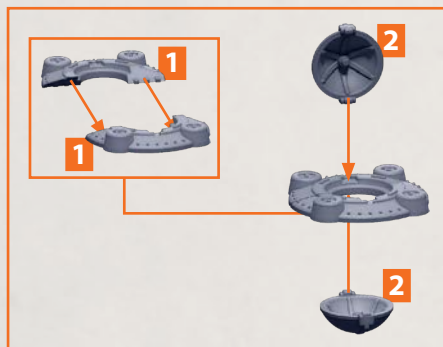


NOTE: RINSE SPRUES IN WARM
SOAPY WATER TO REMOVE ANY
MOULD RELEASE BEFORE ASSEMBLY



FRENCH DROP CAPSULE

PARTS CAN BE FOUND ON THE **ALLIANCE ASSAULT REGIMENT** SPRUES

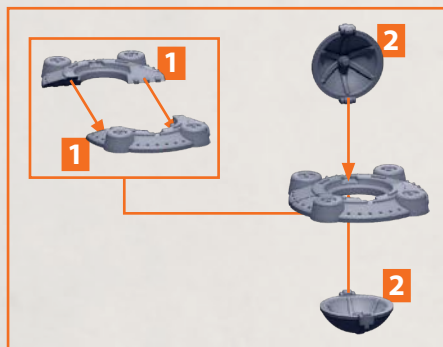


NOTE: RINSE SPRUES IN WARM SOAPY WATER TO REMOVE ANY MOULD RELEASE BEFORE ASSEMBLY



FRENCH DROP FIREBASE

PARTS CAN BE FOUND ON THE **ALLIANCE ASSAULT REGIMENT** SPRUES

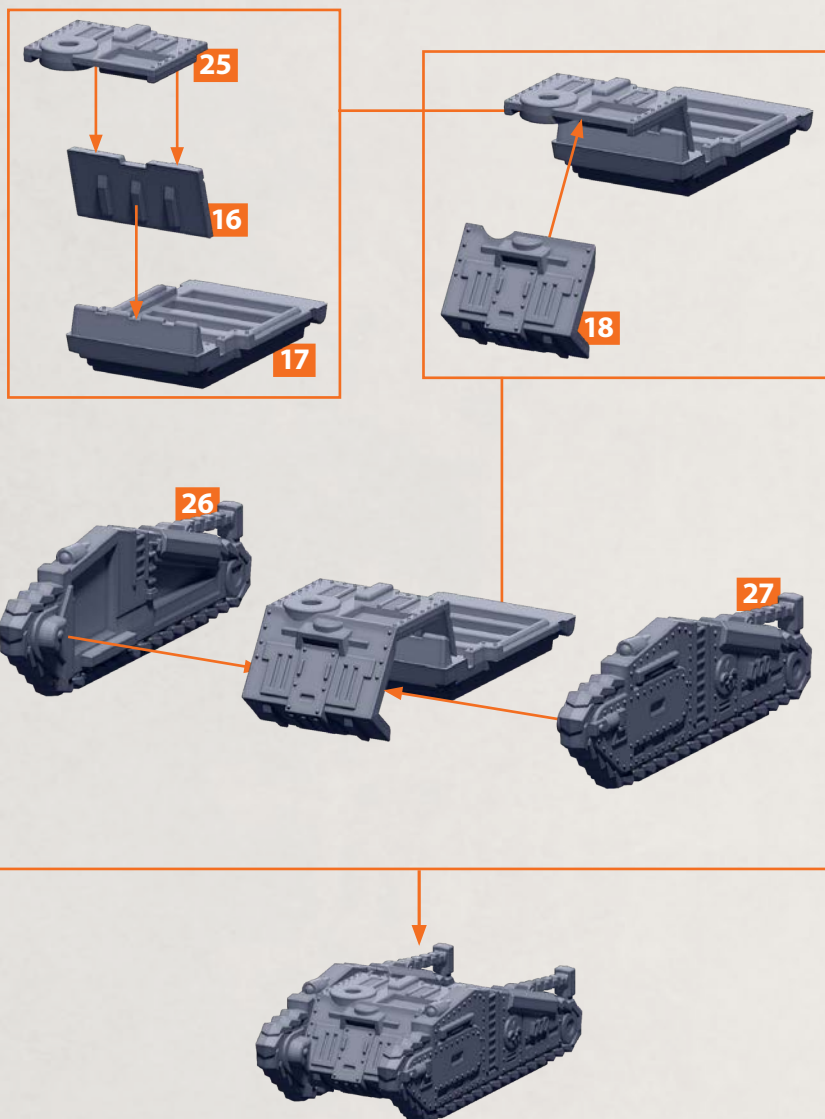


NOTE: RINSE SPRUES IN WARM SOAPY WATER TO REMOVE ANY MOULD RELEASE BEFORE ASSEMBLY



NAVARRE ARTILLERY TANK, AVIGNON MOBILE CHAPELS & CORREGEDOR HEAVY TRANSPORT BODY ASSEMBLY

PARTS CAN BE FOUND ON THE **ALLIANCE ASSAULT REGIMENT** SPRUES



NOTE: RINSE SPRUES IN WARM SOAPY WATER TO REMOVE ANY MOULD RELEASE BEFORE ASSEMBLY

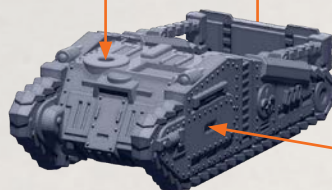
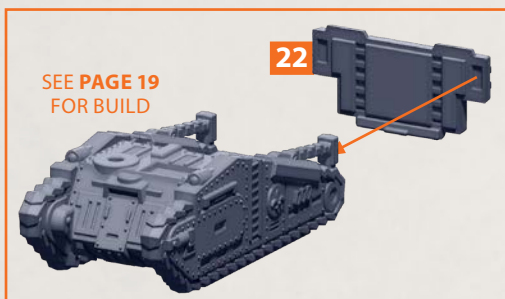


NAVARRE ARTILLERY TANK, AVIGNON MOBILE CHAPELS & CORREGEDOR HEAVY TRANSPORT BODY ASSEMBLY CONTINUED

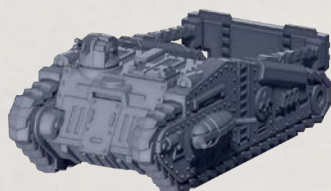
PARTS CAN BE FOUND ON THE **ALLIANCE ASSAULT REGIMENT SPRUES**



USE **PARTS 9 - 10**
FOR NAVARRE BUILD
OR USE **PART 21**
FOR AVIGNON AND
CORREGEDOR BUILD



REPEAT ON
OPPOSITE SIDE FOR
SECOND BUILD



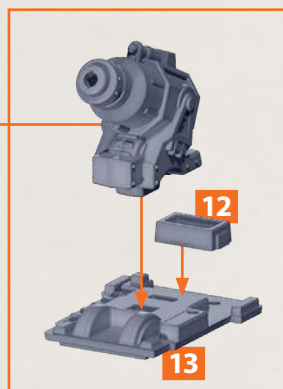
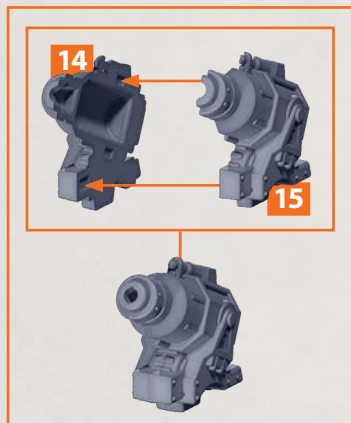
EXAMPLES SHOW THE
NAVARRE ARTILLERY
TANK (LEFT) AND
THE AVIGNON AND
THE CORREGEDOR
BUILD (RIGHT)

NOTE: RINSE SPRUES IN WARM SOAPY WATER TO REMOVE ANY MOULD RELEASE BEFORE ASSEMBLY

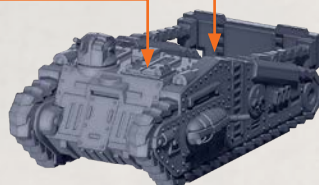
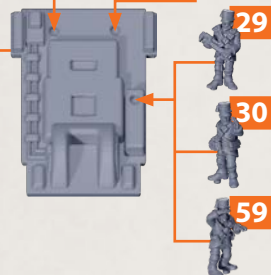


NAVARRE ARTILLERY TANK

PARTS CAN BE FOUND ON THE ALLIANCE ASSAULT REGIMENT SPRUES



ONE TANK SHOULD INCLUDE THE OPEN HATCH OPTION (ABOVE) TO DEFINE THE OFFICER, ALL OTHERS ARE CLOSED (BELOW)



SEE PAGES 19 - 20 FOR BODY BUILD

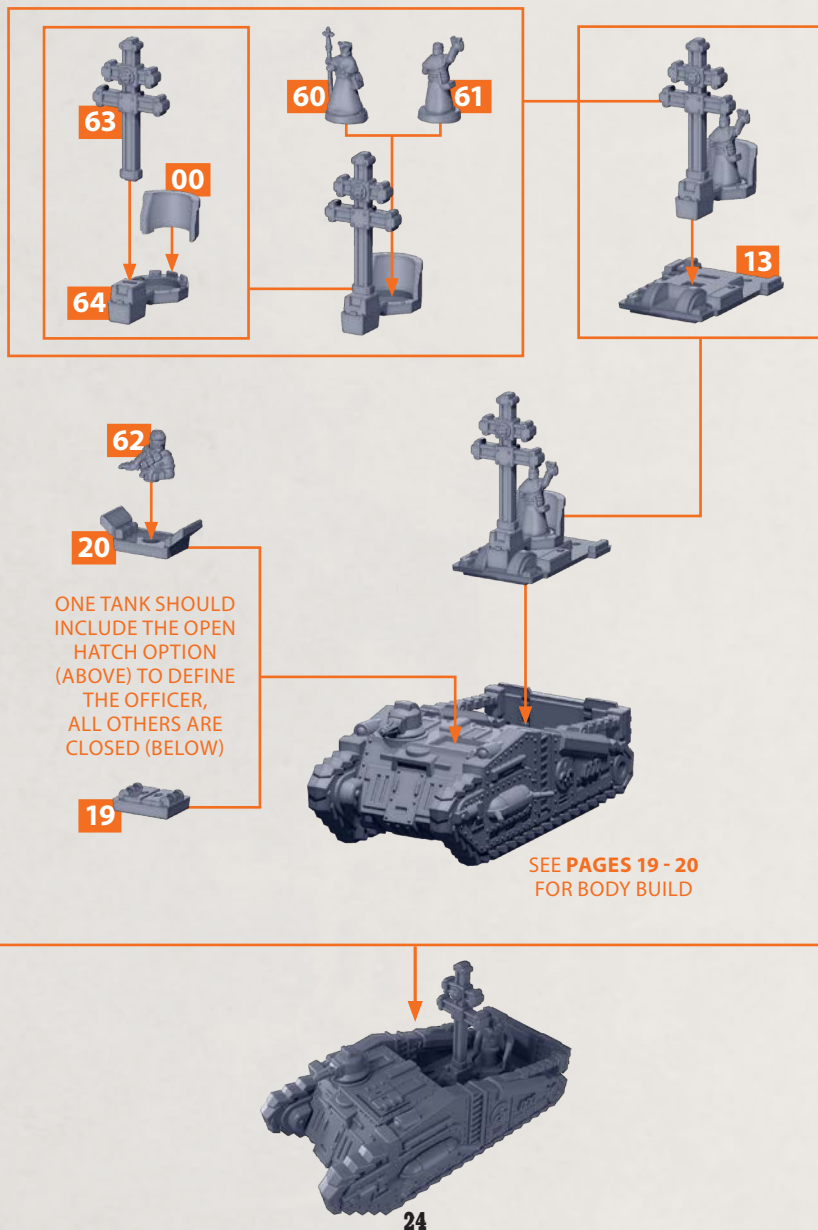


NOTE: RINSE SPRUES IN WARM SOAPY WATER TO REMOVE ANY MOULD RELEASE BEFORE ASSEMBLY



AVIGNON MOBILE CHAPELS

PARTS CAN BE FOUND ON THE **ALLIANCE ASSAULT REGIMENT** SPRUES



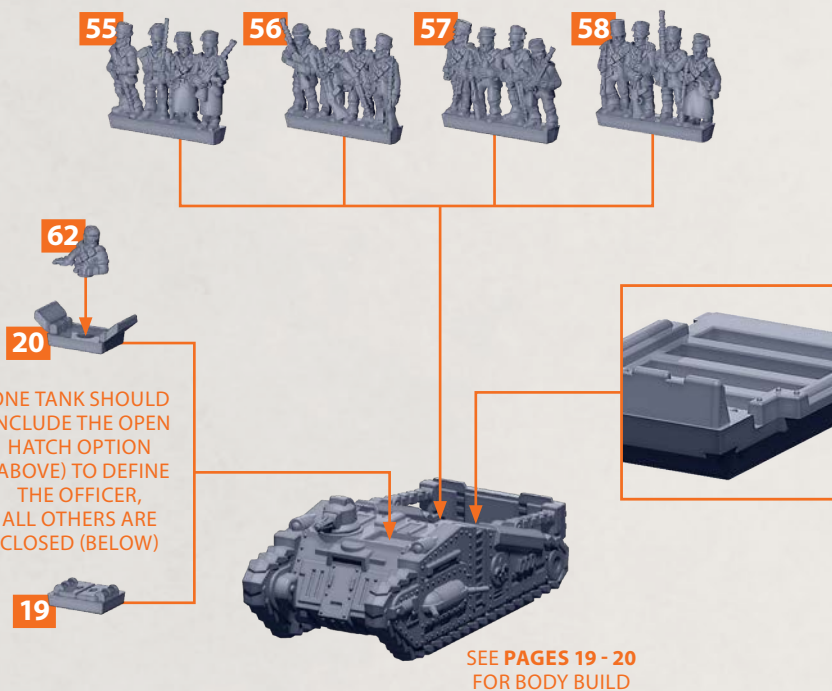
NOTE: RINSE SPRUES IN WARM SOAPY WATER TO REMOVE ANY MOULD RELEASE BEFORE ASSEMBLY



CORREGEDOR HEAVY TRANSPORT

PARTS CAN BE FOUND ON THE **ALLIANCE ASSAULT REGIMENT** SPRUES

NOTE: PLACE EACH ROW OF TROOPS INTO A SLOT SHOWN IN THE IMAGE (BELOW), ANY COMBINATION OF THE TROOPS CAN BE ADDED TO THE BASE



NOTE: RINSE SPRUES IN WARM SOAPY WATER TO REMOVE ANY MOULD RELEASE BEFORE ASSEMBLY



FRENCH LEGIONNAIRES

PARTS CAN BE FOUND ON THE **ALLIANCE ASSAULT REGIMENT** SPRUES

OPTIONS FOR PRIESTS



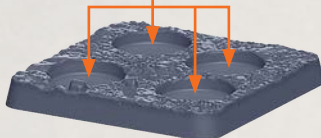
NOTE: ONE MODEL MUST INCLUDE THE OFFICER (PART 53) AND THE FLAG BEARER (PART 67)



ANY COMBINATION OF THE FRENCH LEGIONNAIRES CAN BE ADDED TO THE STANDARD BASES



NOTE: A PRIEST (PART 60 OR PART 61) CAN BE ADDED TO THE STANDARD BASES



EXAMPLES SHOWING THE OFFICER (LEFT), STANDARD MODELS (MIDDLE) AND THE PRIEST (RIGHT)

*IF USING A PRIEST FROM A SPRUE THEN ONE OF THE STANDARD LEGIONNAIRES WILL NEED TO BE SUBSTITUTED