

NOTE: RINSE SPRUES IN WARM SOAPY WATER TO REMOVE ANY MOULD RELEASE BEFORE ASSEMBLY



OFFICER FLAGS

FLAG PARTS CAN BE FOUND ACROSS **VARIOUS ARMOURED CLASH** SPRUES AND THE **BASES** SPRUE

THERE ARE VARIOUS FLAG OPTIONS ACROSS ARMOURED CLASH SPRUES USED TO DEFINE LEADER MODELS WITHIN UNITS

ARMOURED CLASH SPRUES WILL CONTAIN VARIOUS OPTIONS FOR THE OFFICER'S FLAG, THESE CAN BE APPLIED TO A SUITABLE AREA ON ANY MODEL NOT SITUATED ON A BASE



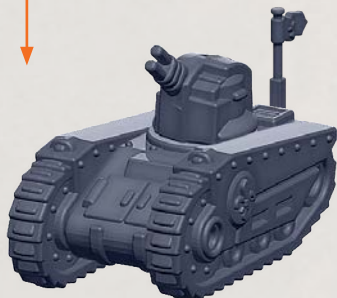
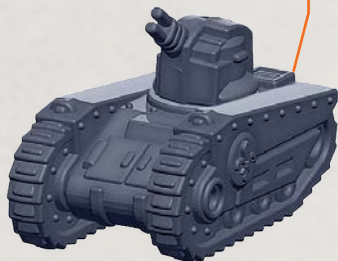
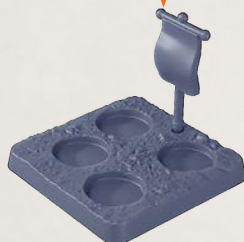
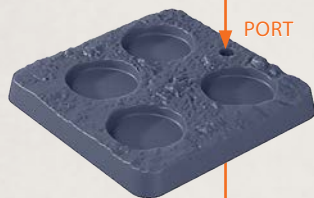
ON THE **BASES** SPRUE YOU WILL FIND A PENNANT FLAG AND BASE THAT INCLUDES A PORT FOR IT



THIS PARTICULAR COMBINATION CAN BE USED WITH UNITS TO DEFINE A MODEL THAT CONTAINS AS AN OFFICER (PARTICULARLY WITH FIGURES SETS THAT DO NOT CONTAIN A FLAG BEARER)



PORT



NOTE: RINSE SPRUES IN WARM SOAPY WATER TO REMOVE ANY MOULD RELEASE BEFORE ASSEMBLY



PRIESTS (ASSAULT)

PARTS CAN BE FOUND ON **ALLIANCE ASSAULT REGIMENT SPRUE**



NOTE: ANY COMBINATION OF THE PRIESTS CAN BE ADDED TO THE STANDARD BASES



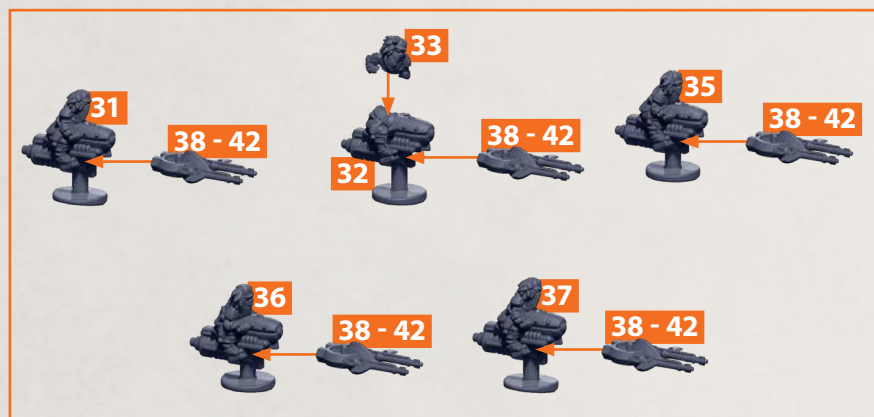
*IF USING A PRIEST FROM A SPRUE THEN ONE OF THE STANDARD TROOPS WILL NEED TO BE SUBSTITUTED

NOTE: RINSE SPRUES IN WARM SOAPY WATER TO REMOVE ANY MOULD RELEASE BEFORE ASSEMBLY



BERSAGLIERI OUTRIDERS

PARTS CAN BE FOUND ON THE ALLIANCE ASSAULT REGIMENT SPRUES

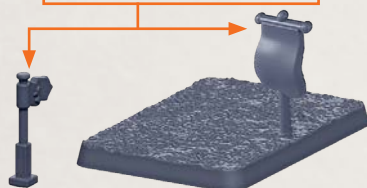


BLANK STANDS CAN BE ADDED TO BASES TO FILL SPACES NOT OCCUPIED BY AN OUTRIDER

EXAMPLES SHOWING BOTH THE OFFICER (BELOW) AND STANDARD MODELS (RIGHT)



THE OFFICER BASE CAN HAVE A FLAG ATTACHED (SEE PAGE 1) IN ORDER TO FURTHER DEFINE THE MODEL AS AN OFFICER

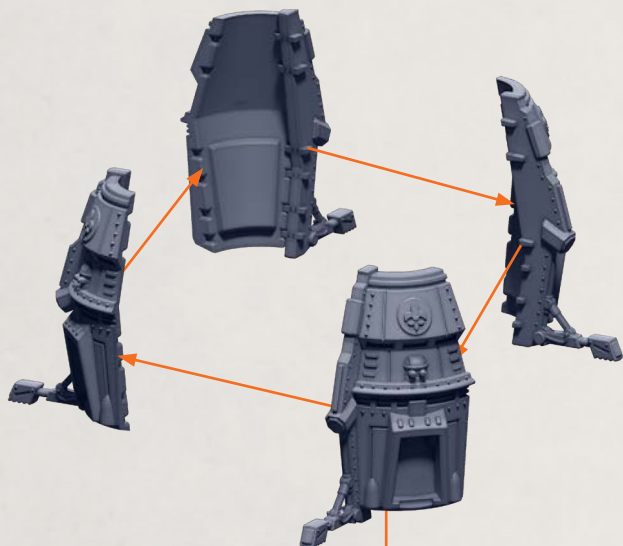


NOTE: RINSE SPRUES IN WARM
SOAPY WATER TO REMOVE ANY
MOULD RELEASE BEFORE ASSEMBLY



FRENCH DROP CAPSULE & FRENCH DROP FIREBASE BODY ASSEMBLY

PARTS CAN BE FOUND ON THE **ALLIANCE ASSAULT REGIMENT** SPRUES

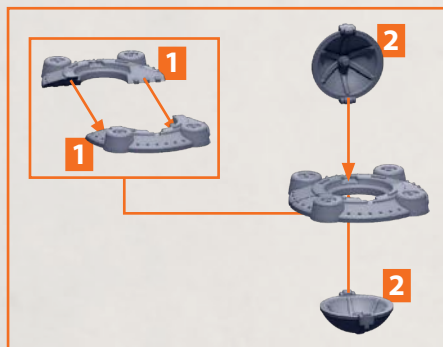


NOTE: RINSE SPRUES IN WARM
SOAPY WATER TO REMOVE ANY
MOULD RELEASE BEFORE ASSEMBLY



FRENCH DROP CAPSULE

PARTS CAN BE FOUND ON THE **ALLIANCE ASSAULT REGIMENT** SPRUES

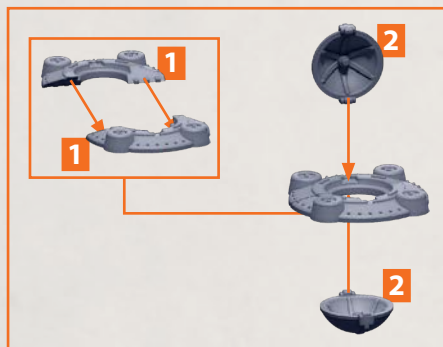


**NOTE: RINSE SPRUES IN WARM
SOAPY WATER TO REMOVE ANY
MOULD RELEASE BEFORE ASSEMBLY**



FRENCH DROP FIREBASE

PARTS CAN BE FOUND ON THE **ALLIANCE ASSAULT REGIMENT** SPRUES

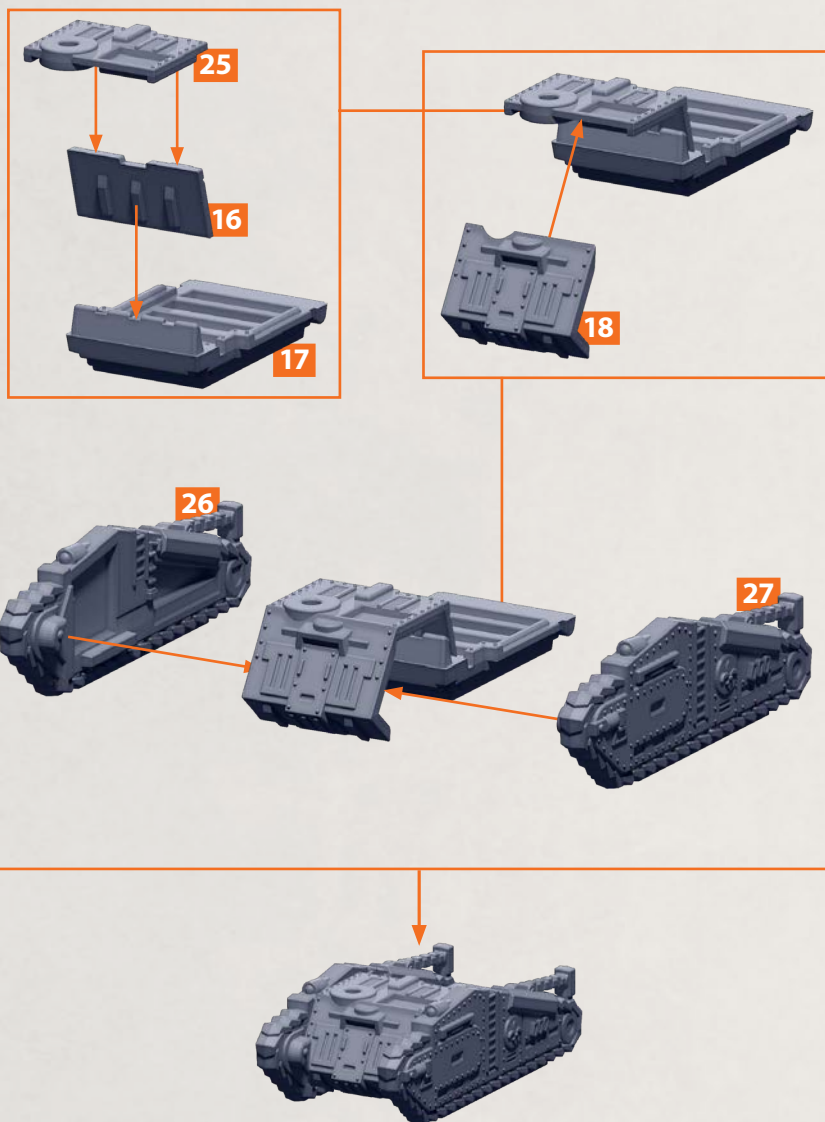


NOTE: RINSE SPRUES IN WARM SOAPY WATER TO REMOVE ANY MOULD RELEASE BEFORE ASSEMBLY



NAVARRE ARTILLERY TANK, AVIGNON MOBILE CHAPELS & CORREGEDOR HEAVY TRANSPORT BODY ASSEMBLY

PARTS CAN BE FOUND ON THE **ALLIANCE ASSAULT REGIMENT** SPRUES



NOTE: RINSE SPRUES IN WARM SOAPY WATER TO REMOVE ANY MOULD RELEASE BEFORE ASSEMBLY

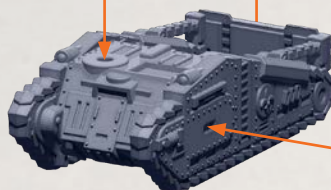
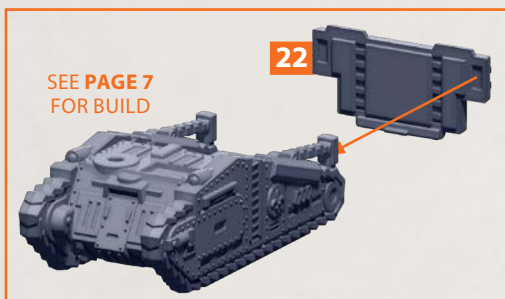


NAVARRE ARTILLERY TANK, AVIGNON MOBILE CHAPELS & CORREGEDOR HEAVY TRANSPORT BODY ASSEMBLY CONTINUED

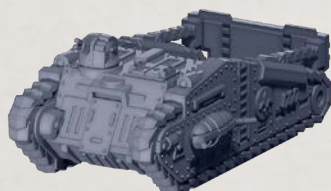
PARTS CAN BE FOUND ON THE **ALLIANCE ASSAULT REGIMENT SPRUES**



USE **PARTS 9 - 10**
FOR NAVARRE BUILD
OR USE **PART 21**
FOR AVIGNON AND
CORREGEDOR BUILD



REPEAT ON
OPPOSITE SIDE FOR
SECOND BUILD



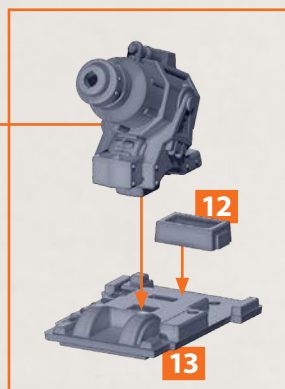
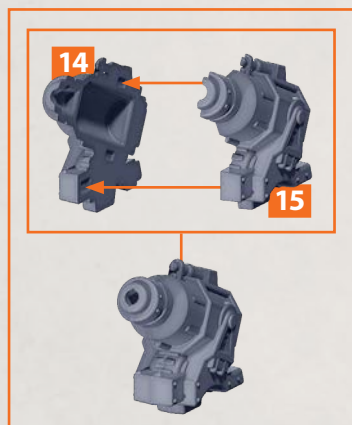
EXAMPLES SHOW THE
NAVARRE ARTILLERY
TANK (LEFT) AND
THE AVIGNON AND
THE CORREGEDOR
BUILD (RIGHT)

NOTE: RINSE SPRUES IN WARM SOAPY WATER TO REMOVE ANY MOULD RELEASE BEFORE ASSEMBLY

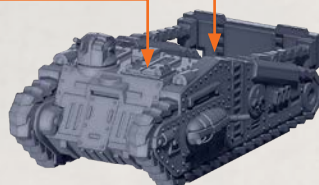
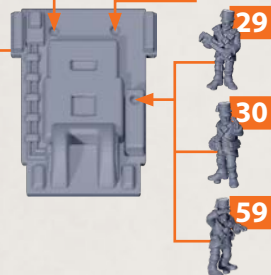


NAVARRE ARTILLERY TANK

PARTS CAN BE FOUND ON THE **ALLIANCE ASSAULT REGIMENT** SPRUES



ONE TANK SHOULD INCLUDE THE OPEN HATCH OPTION (ABOVE) TO DEFINE THE OFFICER, ALL OTHERS ARE CLOSED (BELOW)



SEE **PAGES 7 - 8**
FOR BODY BUILD

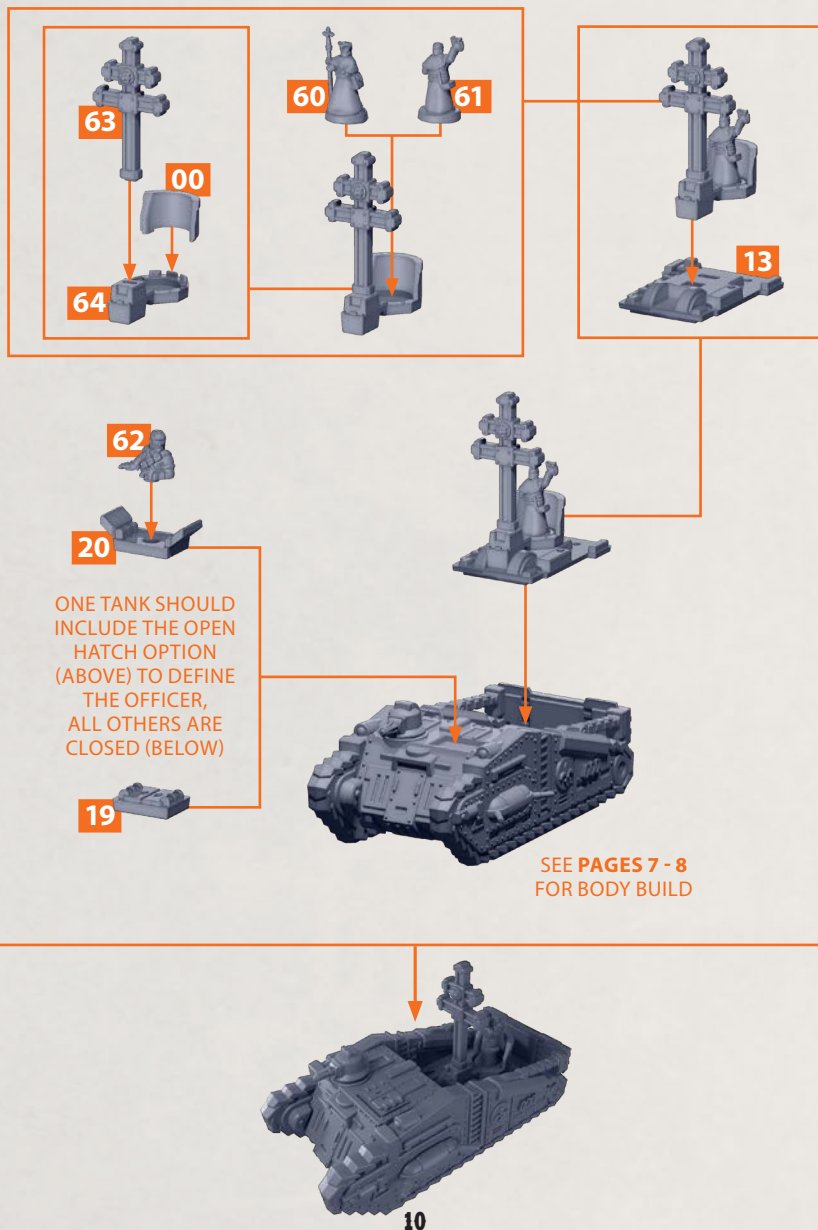


NOTE: RINSE SPRUES IN WARM SOAPY WATER TO REMOVE ANY MOULD RELEASE BEFORE ASSEMBLY



AVIGNON MOBILE CHAPELS

PARTS CAN BE FOUND ON THE **ALLIANCE ASSAULT REGIMENT** SPRUES



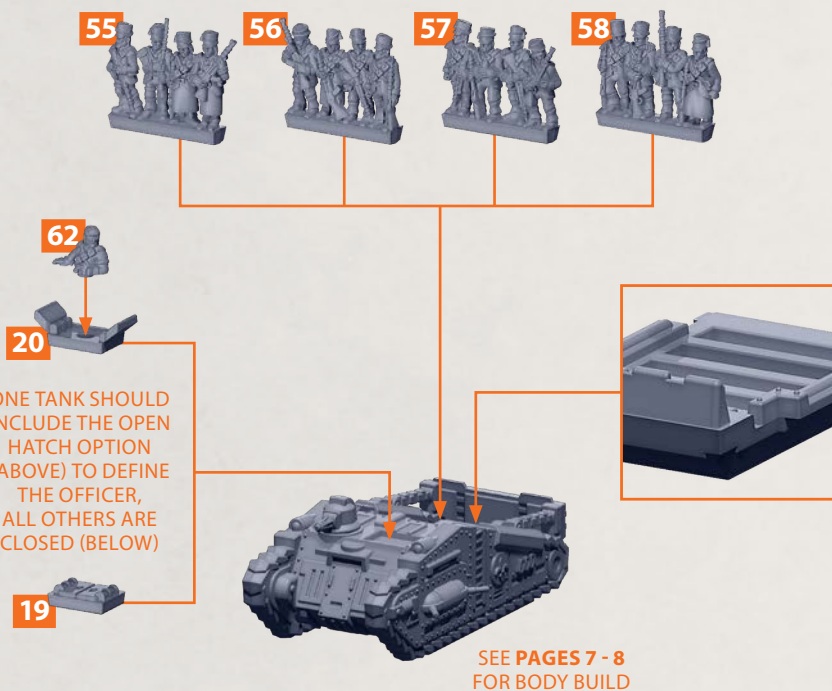
NOTE: RINSE SPRUES IN WARM SOAPY WATER TO REMOVE ANY MOULD RELEASE BEFORE ASSEMBLY



CORREGEDOR HEAVY TRANSPORT

PARTS CAN BE FOUND ON THE **ALLIANCE ASSAULT REGIMENT** SPRUES

NOTE: PLACE EACH ROW OF TROOPS INTO A SLOT SHOWN IN THE IMAGE (BELOW), ANY COMBINATION OF THE TROOPS CAN BE ADD TO THE BASE



NOTE: RINSE SPRUES IN WARM SOAPY WATER TO REMOVE ANY MOULD RELEASE BEFORE ASSEMBLY



FRENCH LEGIONNAIRES

PARTS CAN BE FOUND ON THE **ALLIANCE ASSAULT REGIMENT** SPRUES

OPTIONS FOR PRIESTS



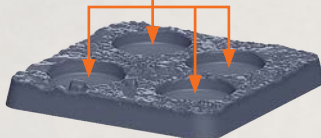
NOTE: ONE MODEL MUST INCLUDE THE OFFICER (PART 53) AND THE FLAG BEARER (PART 67)



ANY COMBINATION OF THE FRENCH LEGIONNAIRES CAN BE ADDED TO THE STANDARD BASES



NOTE: A PRIEST (PART 60 OR PART 61) CAN BE ADDED TO THE STANDARD BASES



EXAMPLES SHOWING THE OFFICER (LEFT), STANDARD MODELS (MIDDLE) AND THE PRIEST (RIGHT)

*IF USING A PRIEST FROM A SPRUE THEN ONE OF THE STANDARD LEGIONNAIRES WILL NEED TO BE SUBSTITUTED